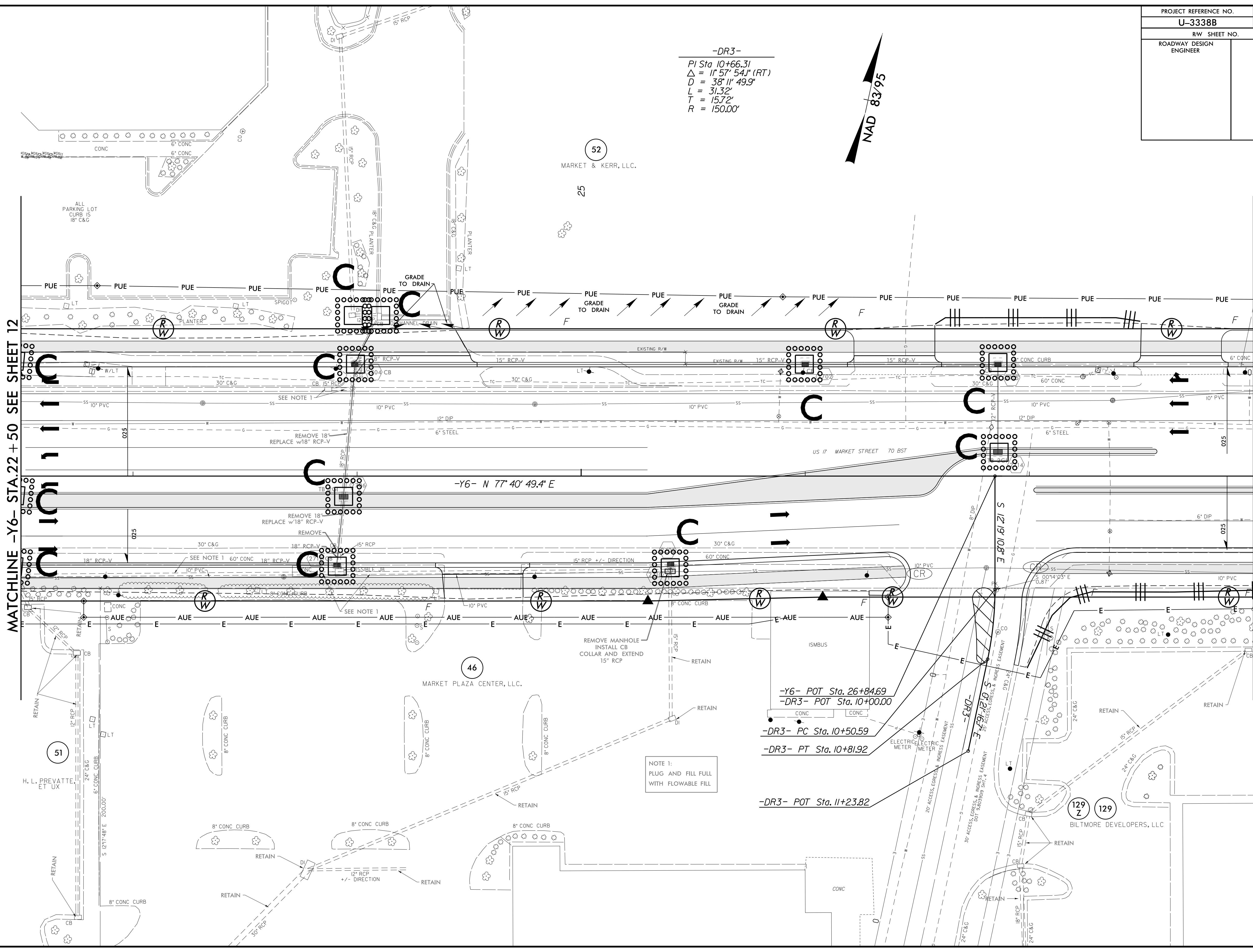
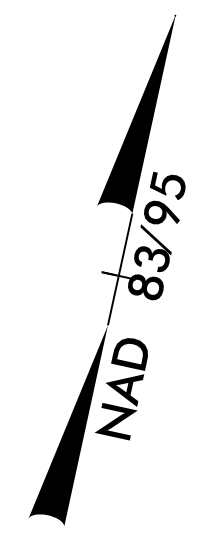


PROJECT REFERENCE NO.	SHEET NO.
U-3338B	EC-66/CONST.28
RW SHEET NO.	
ROADWAY DESIGN ENGINEER	HYDRAULICS ENGINEER

-DR3-
 PI Sta 10+66.31
 $\Delta = 17^{\circ} 57' 54.1''$ (RT)
 $D = 38^{\circ} 11' 49.9''$
 $L = 31.32'$
 $T = 15.72'$
 $R = 150.00'$



MATCHLINE -Y6- STA.22 + 50 SEE SHEET 12

MATCHLINE -Y6- STA.28 + 00 SEE SHEET 29

NOTE 1:
 PLUG AND FILL FULL
 WITH FLOWABLE FILL

-Y6- POT Sta. 26+84.69
 -DR3- POT Sta. 10+00.00
 -DR3- PC Sta. 10+50.59
 -DR3- PT Sta. 10+81.92
 -DR3- POT Sta. 11+23.82

8/17/99
 23 JAN-2015 14:18
 R:\enviroment\U-3338b-EC.upsh.s28.dgn
 H. L. PREVATTE, ET UX