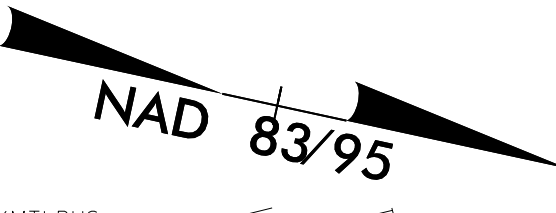
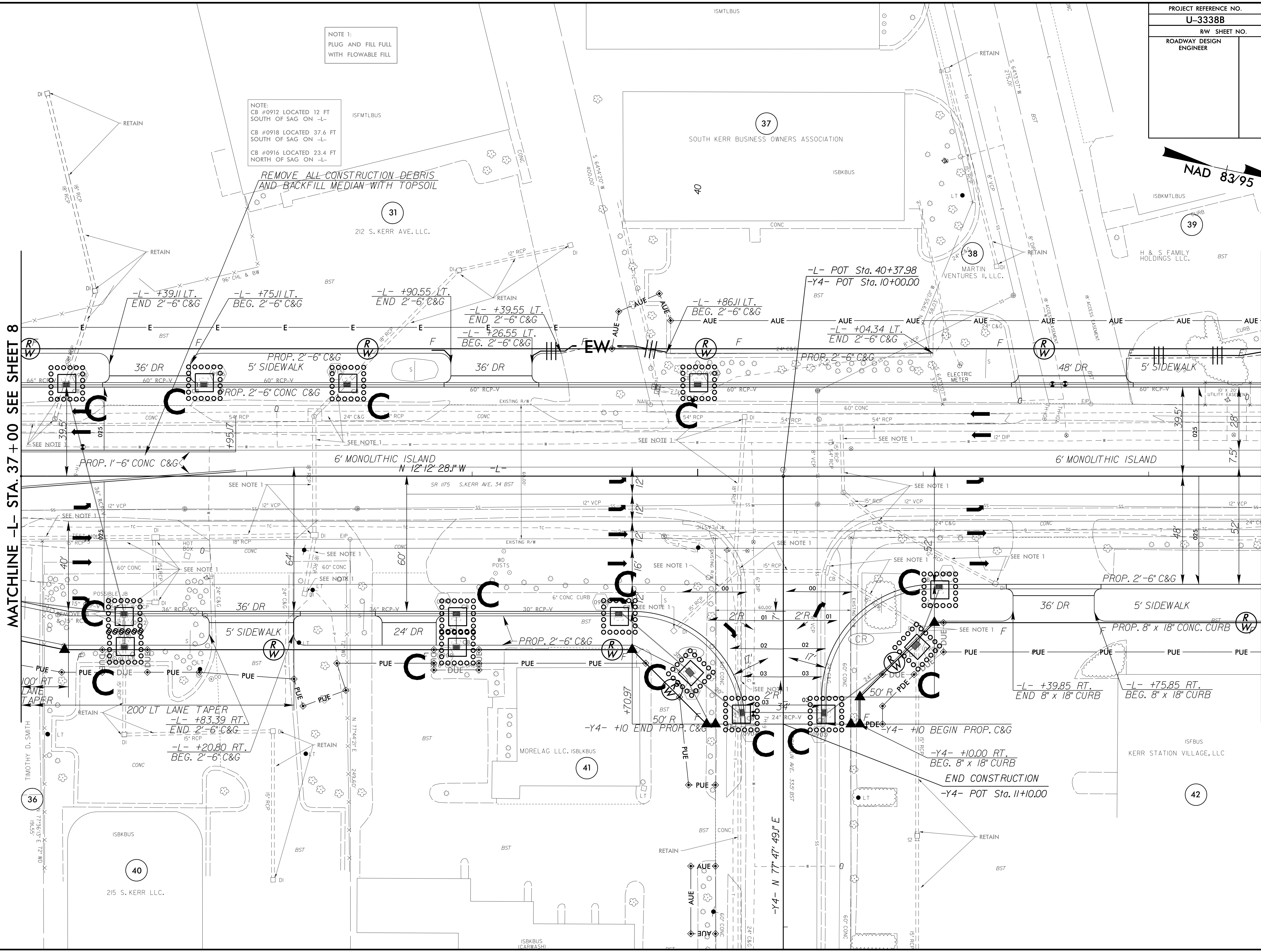


PROJECT REFERENCE NO.	SHEET NO.
U-3338B	EC-47/CONST.9
RW SHEET NO.	
ROADWAY DESIGN ENGINEER	HYDRAULICS ENGINEER



MATCHLINE -L- STA. 37+00 SEE SHEET 8

MATCHLINE -L- STA. 42+50 SEE SHEET 10



NOTE 1:
PLUG AND FILL FULL
WITH FLOWABLE FILL

NOTE:
CB #0912 LOCATED 12 FT
SOUTH OF SAG ON -L-
CB #0918 LOCATED 37.6 FT
SOUTH OF SAG ON -L-
CB #0916 LOCATED 23.4 FT
NORTH OF SAG ON -L-

REMOVE ALL CONSTRUCTION DEBRIS
AND BACKFILL MEDIAN WITH TOPSOIL

8/17/99
 02 JAN-2015 14:34
 D:\s\p\U-3338b-EC.upsh.s09.dgn
 REVISIONS

-Y4- POT Sta. 11+10.00
END CONSTRUCTION