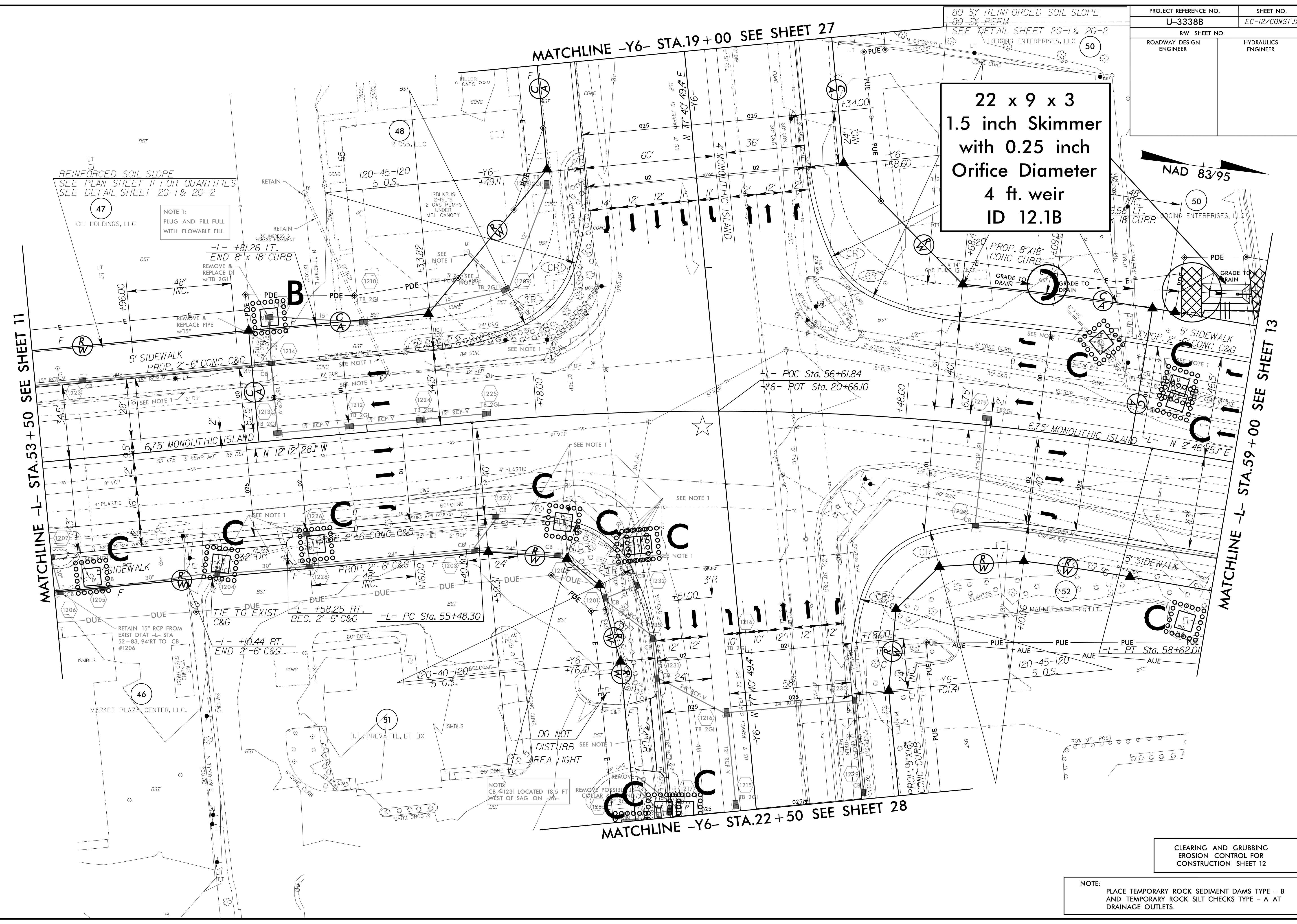


PROJECT REFERENCE NO.	SHEET NO.
U-3338B	EC-12/CONST.12
RW SHEET NO.	
ROADWAY DESIGN ENGINEER	HYDRAULICS ENGINEER



**22 x 9 x 3  
1.5 inch Skimmer  
with 0.25 inch  
Orifice Diameter  
4 ft. weir  
ID 12.1B**

REINFORCED SOIL SLOPE  
SEE PLAN SHEET 11 FOR QUANTITIES  
SEE DETAIL SHEET 26-1 & 26-2

NOTE 1:  
PLUG AND FILL FULL  
WITH FLOWABLE FILL

-L- +81.26 LT.  
END 8" x 18" CURB  
REMOVE &  
REPLACE DI  
w/ TB 2GI

L- POC Sta. 56+61.84  
-Y6- POT Sta. 20+66.10

-L- +10.44 RT.  
END 2'-6" C&G

-L- +58.25 RT.  
BEG. 2'-6" C&G

NOTE 2:  
CB #1231 LOCATED 18.5 FT  
WEST OF SAG ON -Y6-

DO NOT  
DISTURB  
AREA LIGHT

CLEARING AND GRUBBING  
EROSION CONTROL FOR  
CONSTRUCTION SHEET 12

NOTE:  
PLACE TEMPORARY ROCK SEDIMENT DAMS TYPE - B  
AND TEMPORARY ROCK SILT CHECKS TYPE - A AT  
DRAINAGE OUTLETS.

MATCHLINE -L- STA. 53 + 50 SEE SHEET 11

MATCHLINE -Y6- STA. 19 + 00 SEE SHEET 27

MATCHLINE -Y6- STA. 22 + 50 SEE SHEET 28

MATCHLINE -L- STA. 59 + 00 SEE SHEET 13