

NAD 83/95

ROBERT W. STEMKE, ET UX
DB 4856 PG 860
DB 4856 PG 879
DB 4856 PG 898
MB 25 PG 56

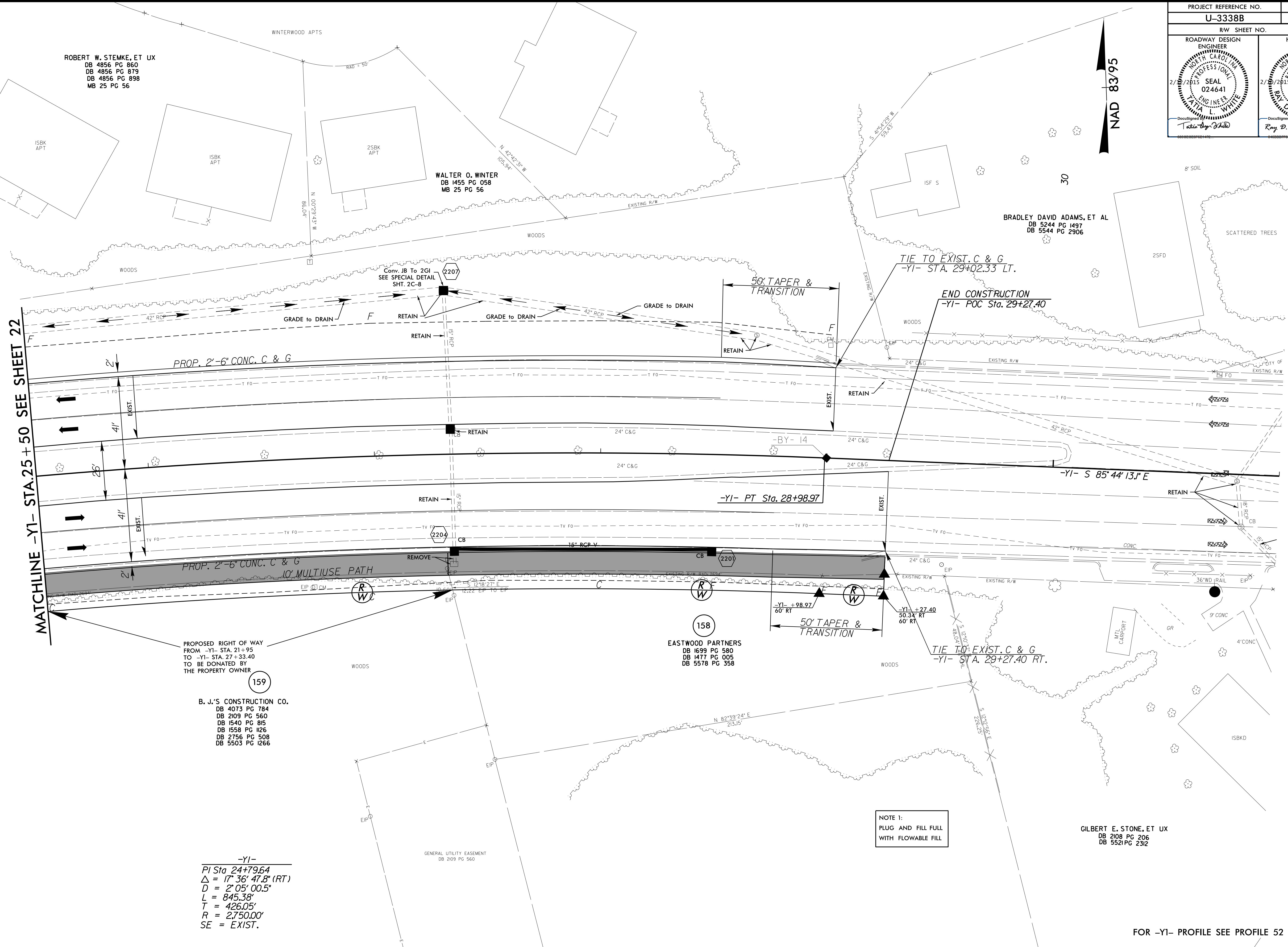
WALTER O. WINTER
DB 1455 PG 058
MB 25 PG 56

BRADLEY DAVID ADAMS, ET AL
DB 5244 PG 1497
DB 5544 PG 2906

EASTWOOD PARTNERS
DB 1699 PG 580
DB 1477 PG 005
DB 5578 PG 358

B. J.'S CONSTRUCTION CO.
DB 4073 PG 784
DB 2109 PG 560
DB 1540 PG 815
DB 1558 PG 126
DB 2755 PG 508
DB 5503 PG 1266

GILBERT E. STONE, ET UX
DB 2108 PG 206
DB 5521 PG 232



MATCHLINE -Y1- STA. 25 + 50 SEE SHEET 22

REVISIONS

NOTE 1:
PLUG AND FILL FULL
WITH FLOWABLE FILL

-Y1-
PI Sta 24+79.64
 $\Delta = 17^{\circ} 36' 47.8" (RT)$
 $D = 2^{\circ} 05' 00.5"$
 $L = 845.38'$
 $T = 426.05'$
 $R = 2750.00'$
SE = EXIST.

FOR -Y1- PROFILE SEE PROFILE 52

8/17/99
27 JAN-2015 15:01 \\s:\3338b_rdl\psh_s22a.dgn
3338B.DWG