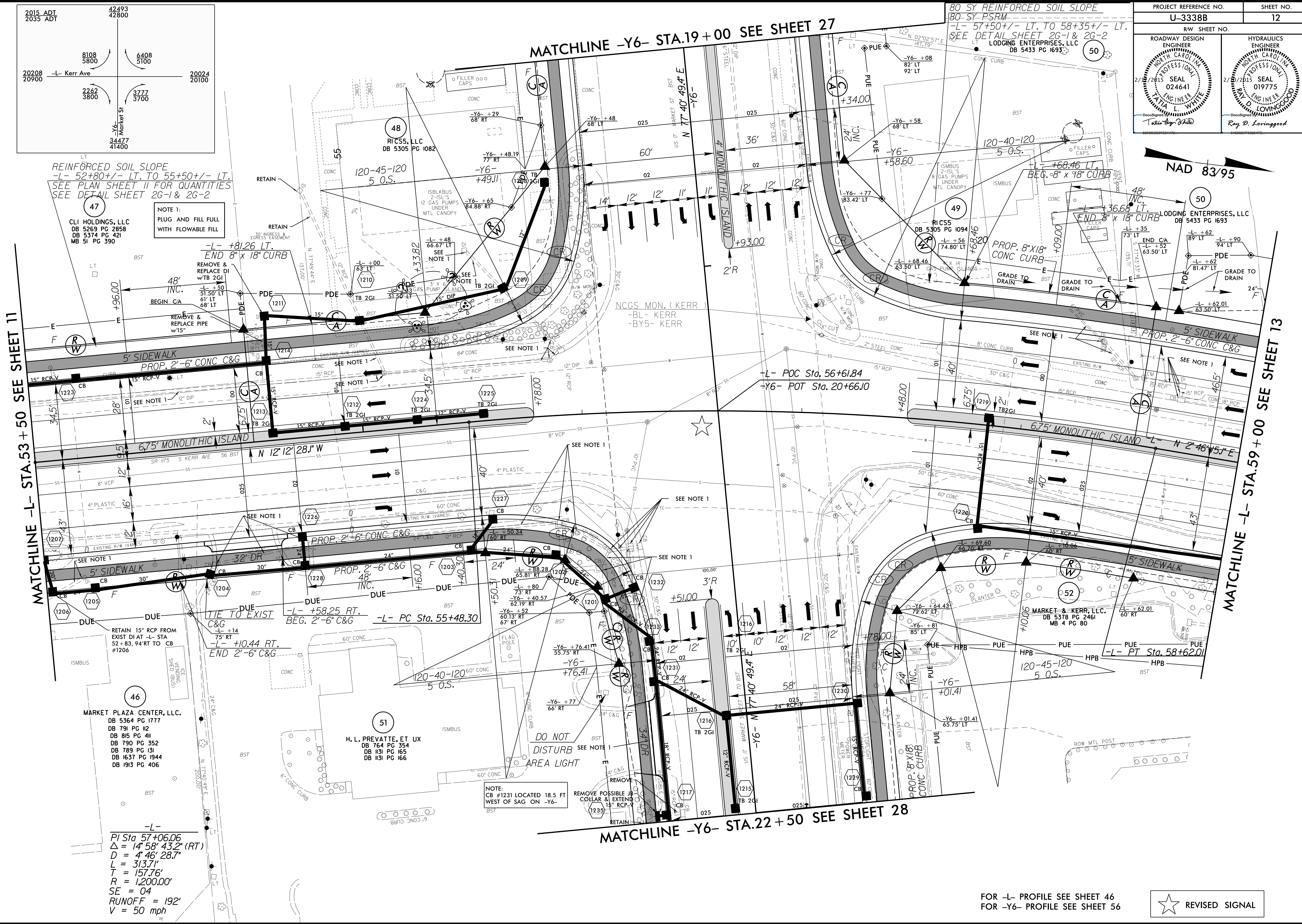
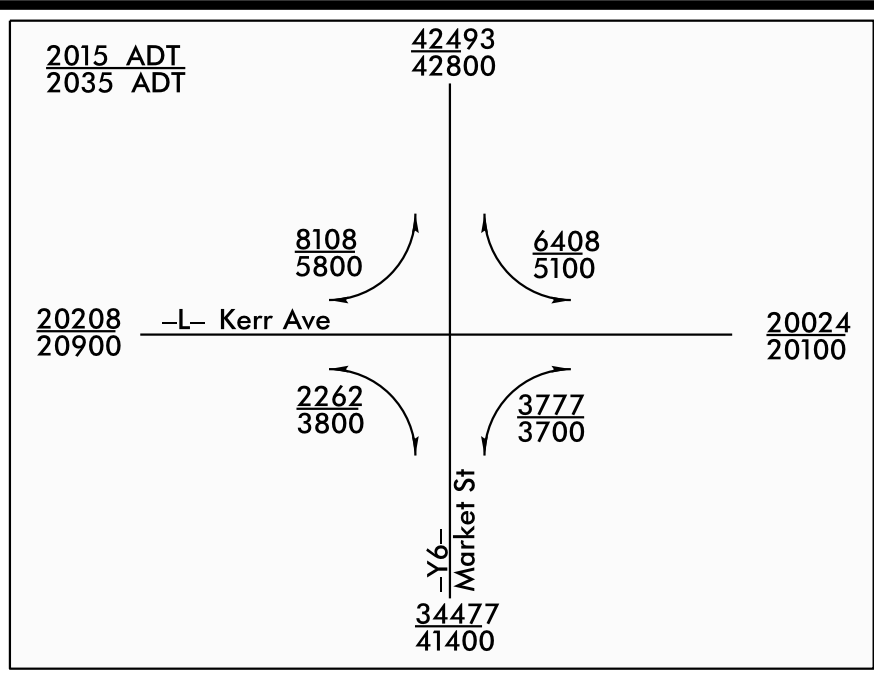


PROJECT REFERENCE NO. U-3338B	SHEET NO. 12
RW SHEET NO.	
ROADWAY DESIGN ENGINEER LOGGING ENTERPRISES, LLC DB 5433 PG 1693	HYDRAULICS ENGINEER ROY D. LIVINGOOD DB 019775



REINFORCED SOIL SLOPE
-L- 52+80+/- LT. TO 55+50+/- LT.
SEE PLAN SHEET 11 FOR QUANTITIES
SEE DETAIL SHEET 2G-1 & 2G-2

NOTE 1:
PLUG AND FILL FULL
WITH FLOWABLE FILL

CLI HOLDINGS, LLC
DB 5269 PG 2858
DB 5374 PG 421
MB 51 PG 390

RICSS, LLC
DB 5305 PG 1082

80 SY REINFORCED SOIL SLOPE
80 SY PSRM
-L- 57+50+/- LT. TO 58+35+/- LT.
SEE DETAIL SHEET 2G-1 & 2G-2

LOGGING ENTERPRISES, LLC
DB 5433 PG 1693

NAD 83/95

LOGGING ENTERPRISES, LLC
DB 5433 PG 1693

MATCHLINE -L- STA.53+50 SEE SHEET 11

MATCHLINE -L- STA.59+00 SEE SHEET 13

MATCHLINE -Y6- STA.19+00 SEE SHEET 27

MATCHLINE -Y6- STA.22+50 SEE SHEET 28

MARKET PLAZA CENTER, LLC.
DB 5364 PG 1777
DB 791 PG 112
DB 815 PG 411
DB 790 PG 352
DB 789 PG 131
DB 1637 PG 1944
DB 1913 PG 406

H. L. PREVATTE, ET UX
DB 764 PG 354
DB 1131 PG 165
DB 1131 PG 166

NOTE:
CB #1231 LOCATED 18.5 FT
WEST OF SAG ON -Y6-

-L-
PI Sta 57+06.06
 $\Delta = 14^{\circ} 58' 43.2''$ (RT)
 $D = 4' 46' 28.7''$
 $L = 313.71'$
 $T = 157.76'$
 $R = 1,200.00'$
 $SE = 04$
RUNOFF = 192'
 $V = 50$ mph

FOR -L- PROFILE SEE SHEET 46
FOR -Y6- PROFILE SEE SHEET 56

★ REVISED SIGNAL

04-FEB-2015 12:12 U:\3338B-rd\psh-s12.dgn