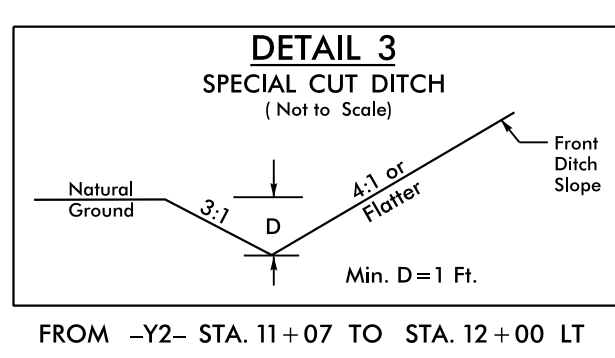


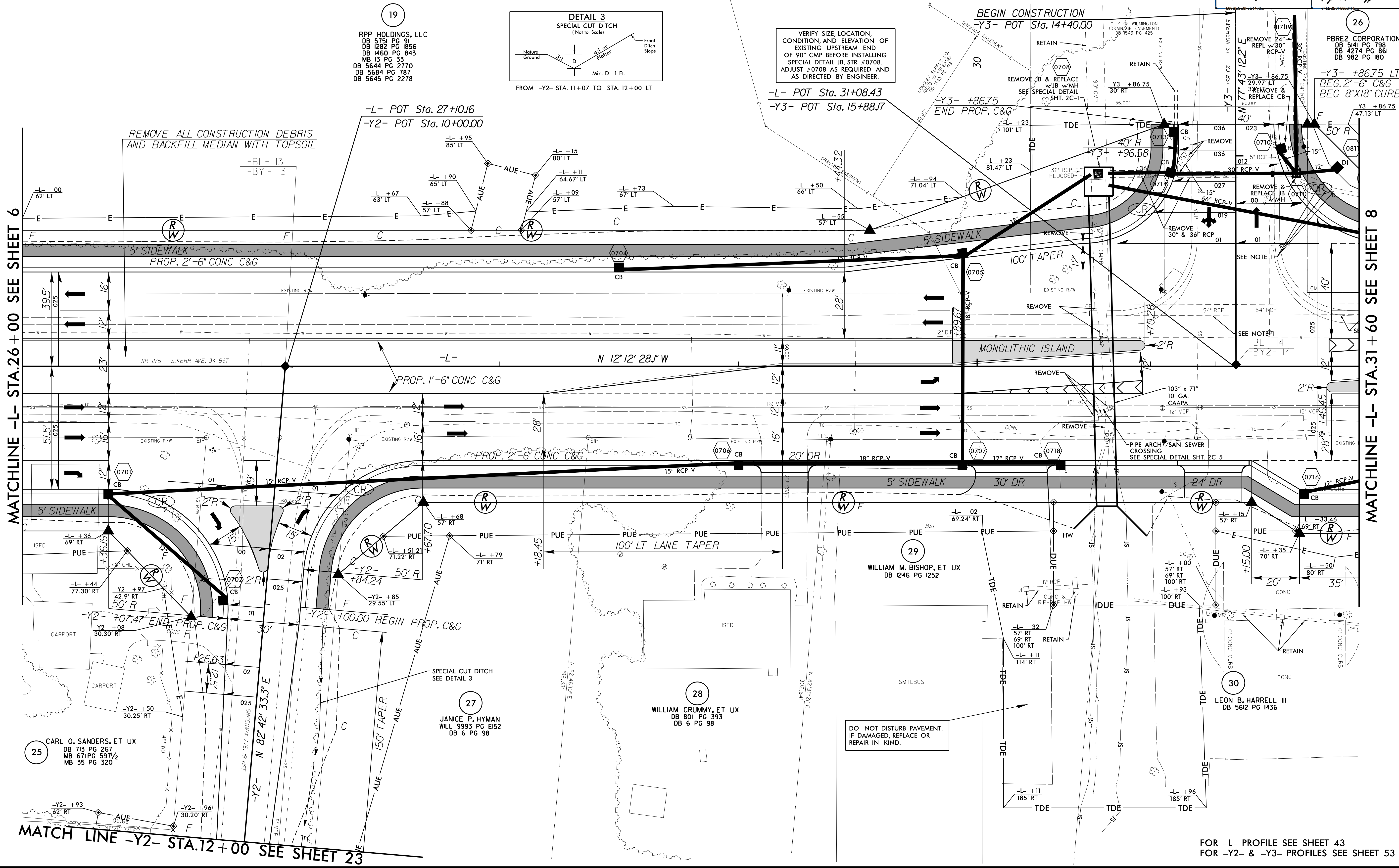
NOTE 1:
PLUG AND FILL FULL WITH FLOWABLE FILL



VERIFY SIZE, LOCATION, CONDITION, AND ELEVATION OF EXISTING UPSTREAM END OF 90° CMP BEFORE INSTALLING SPECIAL DETAIL JB, STR #0708. ADJUST #0708 AS REQUIRED AND AS DIRECTED BY ENGINEER.

19
RPP HOLDINGS, LLC
DB 5751 PG 91
DB 1282 PG 1856
DB 1460 PG 843
MB 13 PG 33
DB 5644 PG 2770
DB 5684 PG 787
DB 5645 PG 2278

26
PBRE2 CORPORATION
DB 3141 PG 798
DB 4274 PG 861
DB 982 PG 180



MATCHLINE -L- STA.26+00 SEE SHEET 6

MATCHLINE -L- STA.31+60 SEE SHEET 8

25
CARL O. SANDERS, ET UX
DB 713 PG 267
MB 671 PG 597 1/2
MB 35 PG 320

27
JANICE P. HYMAN
WILL 9993 PG E152
DB 6 PG 98

28
WILLIAM CRUMMY, ET UX
DB 801 PG 393
DB 6 PG 98

29
WILLIAM M. BISHOP, ET UX
DB 1246 PG 1252

30
LEON B. HARRELL III
DB 5612 PG 1436

DO NOT DISTURB PAVEMENT.
IF DAMAGED, REPLACE OR
REPAIR IN KIND.

MATCH LINE -Y2- STA.12+00 SEE SHEET 23

FOR -L- PROFILE SEE SHEET 43
FOR -Y2- & -Y3- PROFILES SEE SHEET 53

8/17/99

23-FEB-2015 15:43
33338B.rdw.psh.s07.dgn