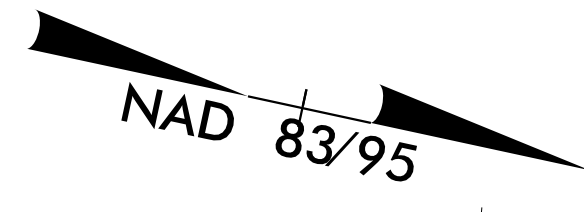


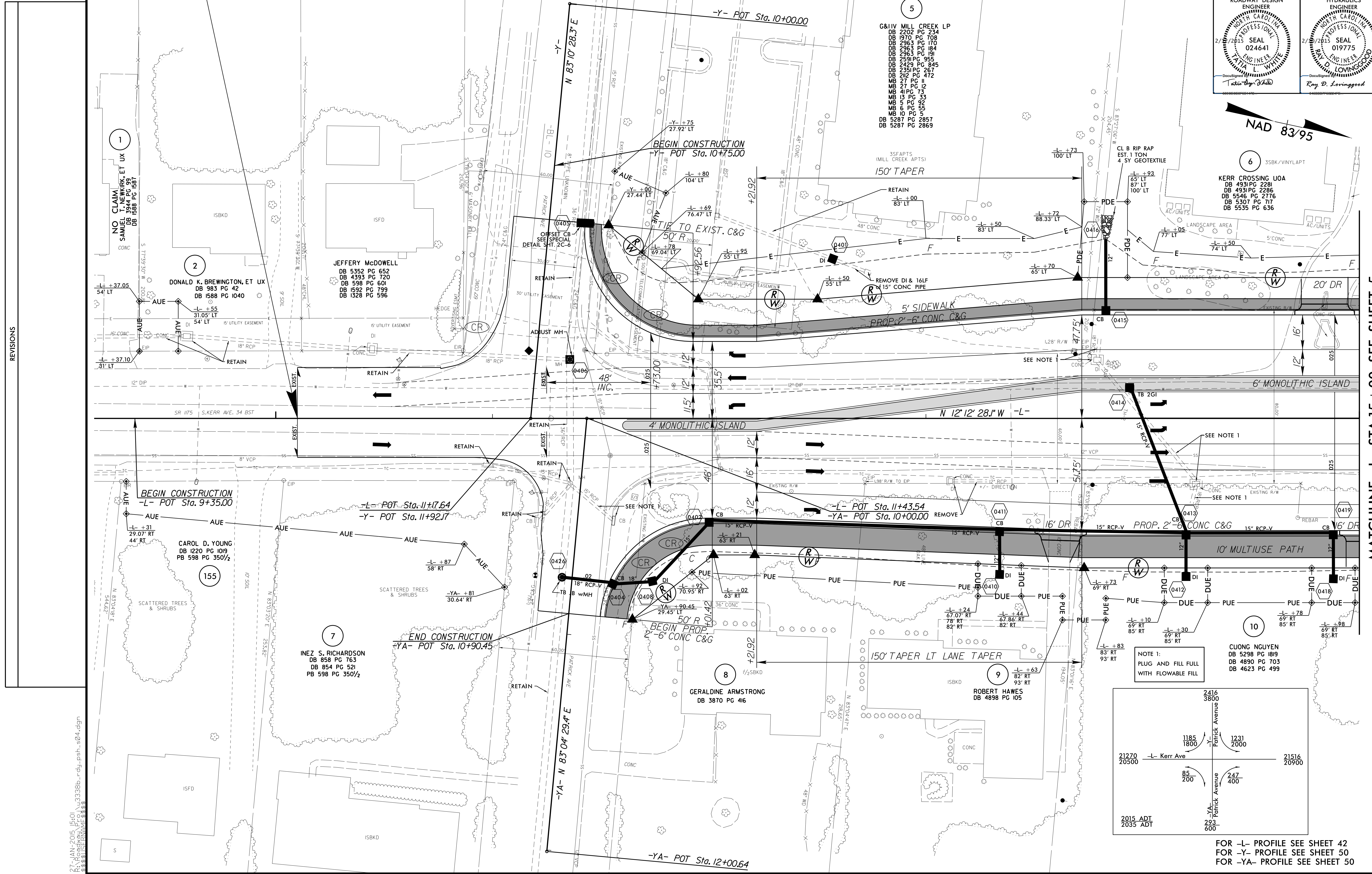
STA. 10+10.00 -L- BEGIN TIP PROJECT U-3338B

PROJECT REFERENCE NO. U-3338B	SHEET NO. 4
RW SHEET NO.	
ROADWAY DESIGN ENGINEER NOEL M. CARROLL Professional Seal 024641	HYDRAULICS ENGINEER ROY D. LOVINGOOD Professional Seal 019775

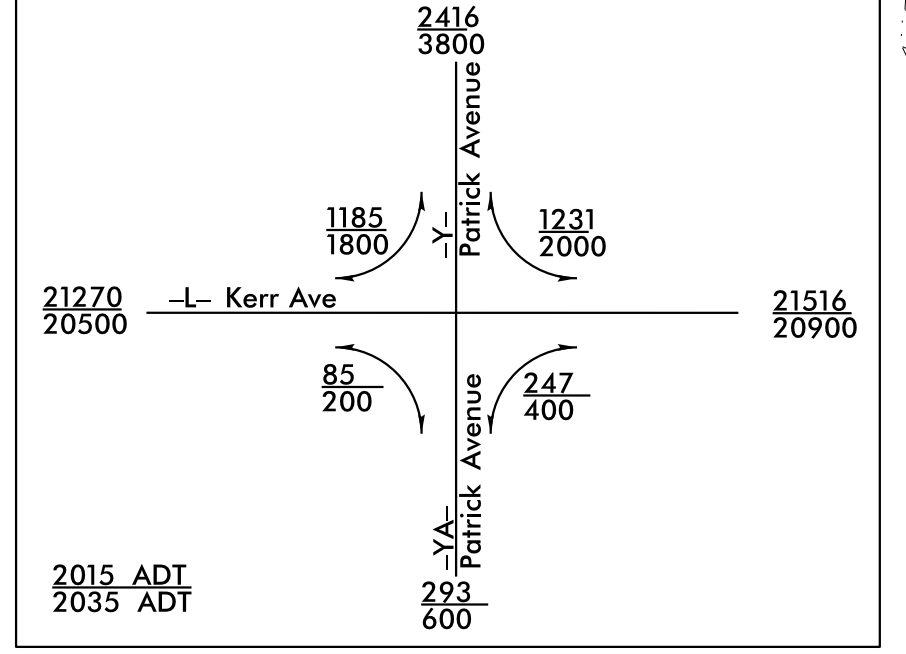


- 5
- G&IV MILL CREEK LP
 - DB 2202 PG 234
 - DB 1970 PG 708
 - DB 2963 PG 170
 - DB 2963 PG 184
 - DB 2963 PG 191
 - DB 2591 PG 955
 - DB 2429 PG 845
 - DB 2351 PG 267
 - DB 2102 PG 472
 - MB 27 PG 11
 - MB 27 PG 12
 - MB 41 PG 73
 - MB 13 PG 33
 - MB 5 PG 92
 - MB 2 PG 55
 - MB 10 PG 5
 - DB 5287 PG 2857
 - DB 5287 PG 2869

- 6
- 35BK/VINYLAFT
 - KERR CROSSING LOA
 - DB 4931 PG 2281
 - DB 4931 PG 2286
 - DB 5546 PG 2776
 - DB 5307 PG 717
 - DB 5535 PG 636



NOTE 1:
PLUG AND FILL FULL WITH FLOWABLE FILL



FOR -L- PROFILE SEE SHEET 42
FOR -Y- PROFILE SEE SHEET 50
FOR -YA- PROFILE SEE SHEET 50

REVISIONS

8/17/99

27 JAN-2015 15:01 N:\3338B_rdl.psh.s04.dgn
3338B.DWG

MATCHLINE -L- STA.15+00 SEE SHEET 5