

**This electronic collection of documents is provided
for the convenience of the user
and is Not a Certified Document –**

**The documents contained herein were originally issued
and sealed by the individuals whose names and license
numbers appear on each page, on the dates appearing
with their signature on that page.**

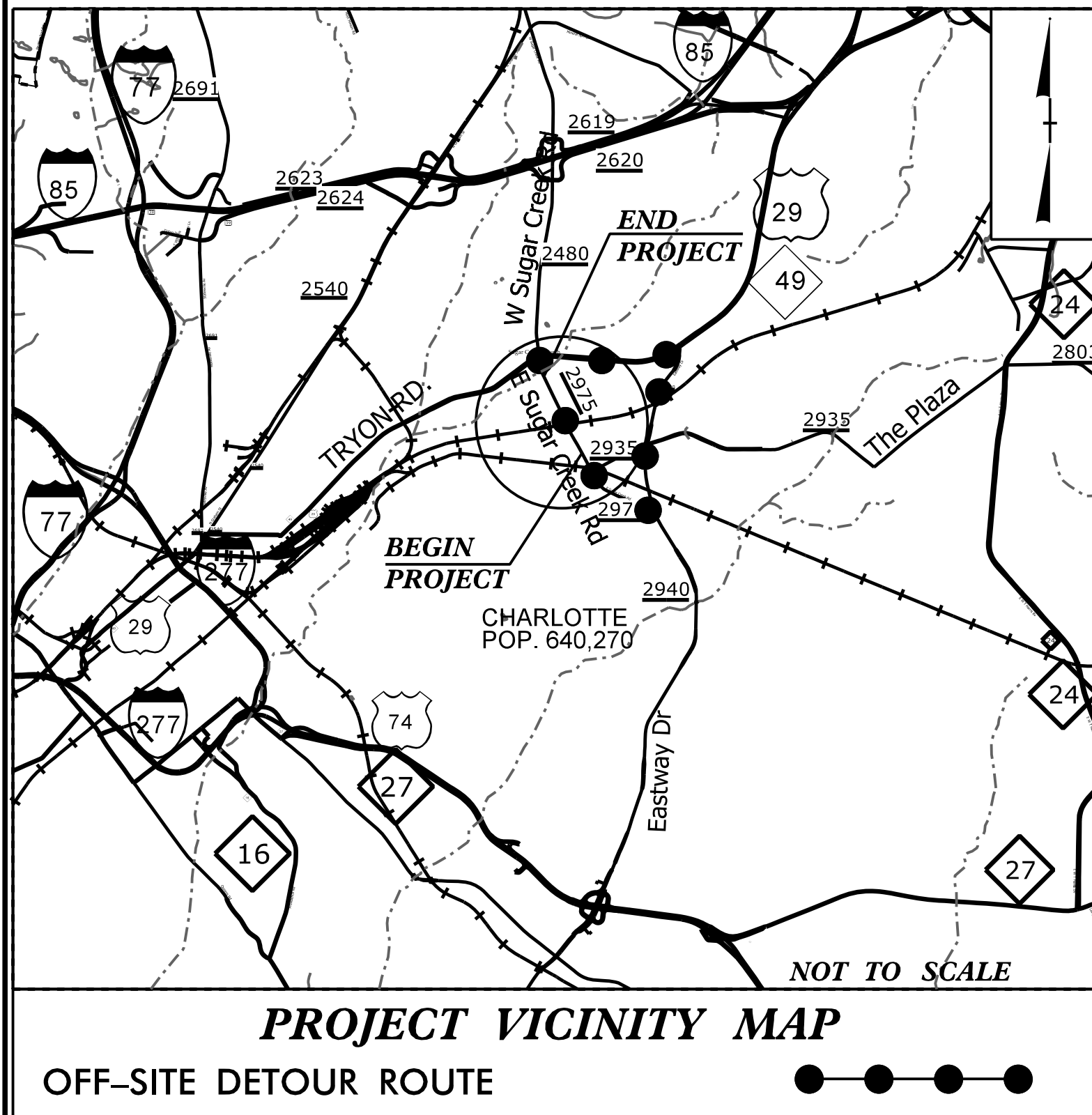
**This file or an individual page
shall not be considered a certified document.**

0400DEL-P30

TIP PROJECT: U-5008

CONTRACT:

See Sheet 1-A For Index of Sheets
See Sheet 1-B For Conventional Plan Sheet Symbols



THIS PROJECT CONTAINS EROSION CONTROL PLANS FOR CLEARING AND GRUBBING PHASE OF CONSTRUCTION.

THIS PROJECT CONTAINS EROSION CONTROL PLANS FOR FINAL GRADE PHASE OF CONSTRUCTION.

STATE OF NORTH CAROLINA RAIL DIVISION

MECKLENBURG COUNTY

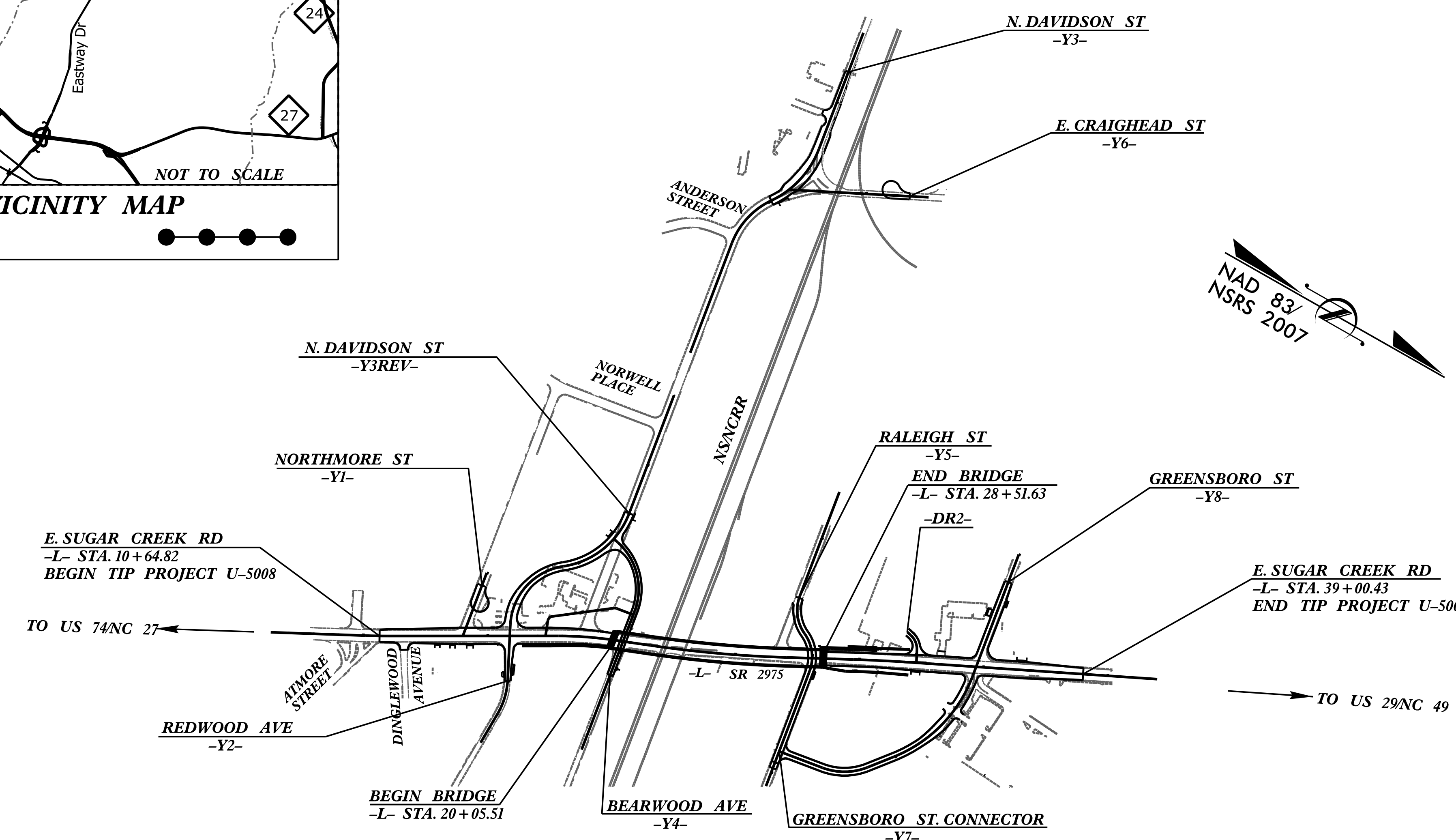
LOCATION: SR 2975 (EAST SUGAR CREEK ROAD) OVER NSNCRR
CROSSING NO. 715 352H-GRADE SEPARATION
HIGHWAY EROSION CONTROL
TYPE OF WORK: GRADING, DRAINAGE, PAVING, WALLS AND STRUCTURE



STATE	STATE PROJECT REFERENCE NO.	SHEET NO.	TOTAL SHEETS
N.C.	U-5008	EC-1	
STATE PROJ. NO.	F.A. PROJ. NO.	DESCRIPTION	
WBS 41141.1.1			

EROSION AND SEDIMENT CONTROL MEASURES

Std. #	Description	Symbol
1630.03	Temporary Silt Ditch	— TD —
1630.05	Temporary Diversion	— TD —
1605.01	Temporary Silt Fence	— SF —
1606.01	Special Sediment Control Fence	— SCF —
1622.01	Temporary Berms and Slope Drains	— TD —
1630.02	Silt Basin Type B	— SB —
1633.01	Temporary Rock Silt Check Type-A	— RSC —
	Temporary Rock Silt Check Type-A with Matting and Polyacrylamide (PAM)	— RSC —
1633.02	Temporary Rock Silt Check Type-B	— RSC —
	Wattle / Coir Fiber Wattle	— WF —
	Wattle / Coir Fiber Wattle with Polyacrylamide (PAM)	— WF —
1634.01	Temporary Rock Sediment Dam Type-A	— RSD —
1634.02	Temporary Rock Sediment Dam Type-B	— RSD —
1635.01	Rock Pipe Inlet Sediment Trap Type-A	— RPI —
1635.02	Rock Pipe Inlet Sediment Trap Type-B	— RPI —
1630.04	Stilling Basin	— SB —
1630.06	Special Stilling Basin	— SB —
	Rock Inlet Sediment Trap:	
1632.01	Type A	— RIT —
1632.02	Type B	— RIT —
1632.03	Type C	— RIT —
	Skimmer Basin	— SB —
	Tiered Skimmer Basin	— SB —
	Infiltration Basin	— IB —



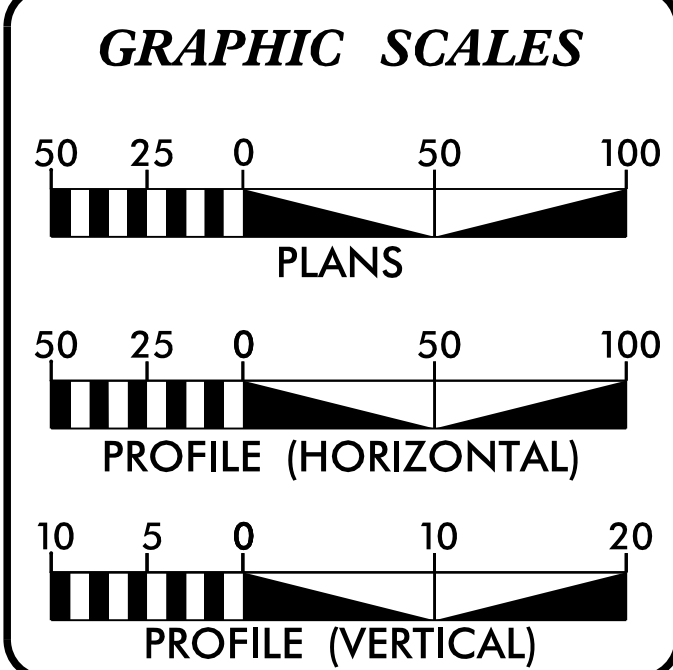
ROADSIDE ENVIRONMENTAL UNIT
DEPARTMENT OF TRANSPORTATION
DIVISION OF HIGHWAYS
RALEIGH, N.C.
2012 STANDARD SPECIFICATIONS

NOTES: ANY DEVIATION FROM OPTIONS GIVEN WILL REQUIRE PRIOR APPROVAL BY ENGINEER.

ADDITIONAL EROSION CONTROL DEVICES MAY NEED TO BE INSTALLED AS DIRECTED BY THE ENGINEER.

NOTES: SHEET NO. EC-2 NOT REQUIRED

CLEARING ON THIS PROJECT SHALL BE PERFORMED TO THE LIMITS ESTABLISHED BY METHOD III
THIS PROJECT IS WITHIN MUNICIPAL BOUNDARIES OF CHARLOTTE



ROADSIDE ENVIRONMENTAL UNIT
DIVISION OF HIGHWAYS
STATE OF NORTH CAROLINA

THESE EROSION AND SEDIMENT CONTROL PLANS COMPLY WITH THE REGULATIONS SET FORTH BY THE NCG-010000 GENERAL CONSTRUCTION PERMIT EFFECTIVE AUGUST 3, 2011 ISSUED BY THE NORTH CAROLINA DEPARTMENT OF ENVIRONMENT AND NATURAL RESOURCES DIVISION OF WATER QUALITY.

STEVEN BONDOR, PE
LEVEL III NAME
3077
LEVEL III CERTIFICATION NO.

5565 CENTERVIEW DR, SUITE 107
RALEIGH NC, 27606
(919) 851-1919 FAX (919) 851-8393
LICENSE # F-0672

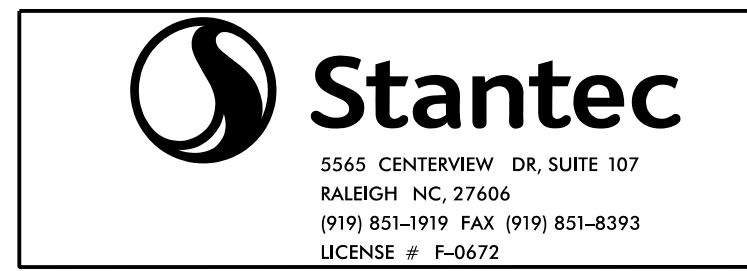
Roadway Standard Drawings

The following roadway english standards as appear in "Roadway Standard Drawings"- Roadway Design Unit - N. C. Department of Transportation - Raleigh, N. C., dated January 2012 and the latest revision thereto are applicable to this project and by reference hereby are considered a part of these plans.

1604.01 Railroad Erosion Control Detail	1632.01 Rock Inlet Sediment Trap Type A
1605.01 Temporary Silt Fence	1632.02 Rock Inlet Sediment Trap Type B
1606.01 Special Sediment Control Fence	1632.03 Rock Inlet Sediment Trap Type C
1607.01 Gravel Construction Entrance	1633.01 Temporary Rock Silt Check Type A
1622.01 Temporary Berms and Slope Drains	1633.02 Temporary Rock Silt Check Type B
1630.01 Riser Basin	1634.01 Temporary Rock Sediment Dam Type A
1630.02 Silt Basin Type B	1634.02 Temporary Rock Sediment Dam Type B
1630.03 Temporary Silt Ditch	1635.01 Rock Pipe Inlet Sediment Trap Type A
1630.04 Stilling Basin	1635.02 Rock Pipe Inlet Sediment Trap Type B
1630.05 Temporary Diversion	1640.01 Coir Fiber Baffle
1630.06 Special Stilling Basin	1645.01 Temporary Stream Crossing
1631.01 Matting Installation	

0400DEL-P30

DIVISION OF HIGHWAYS
STATE OF NORTH CAROLINA



PROJECT REFERENCE NO. <i>U-5008</i>	SHEET NO. <i>EC-3</i>
ROADWAY DESIGN ENGINEER	HYDRAULICS ENGINEER

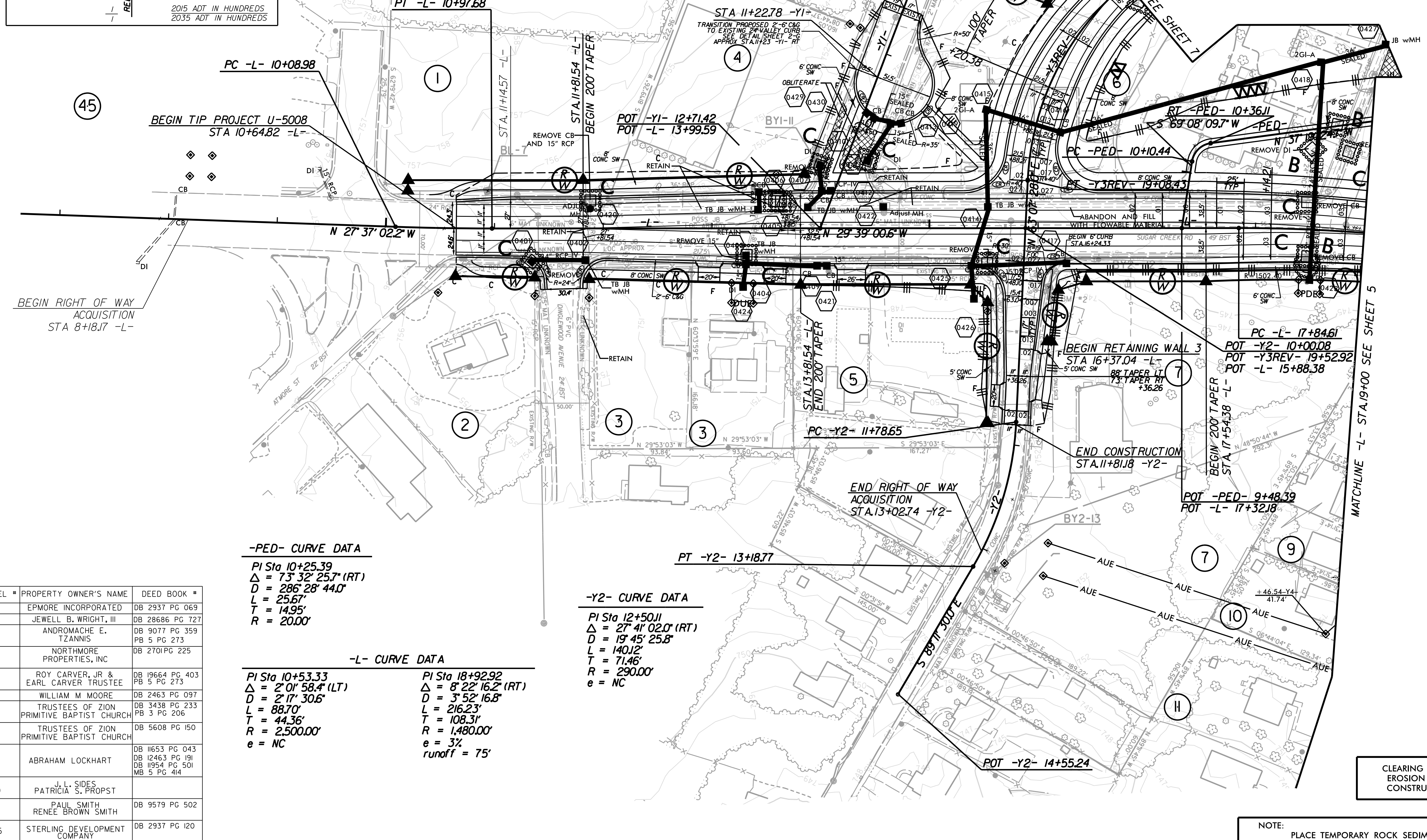
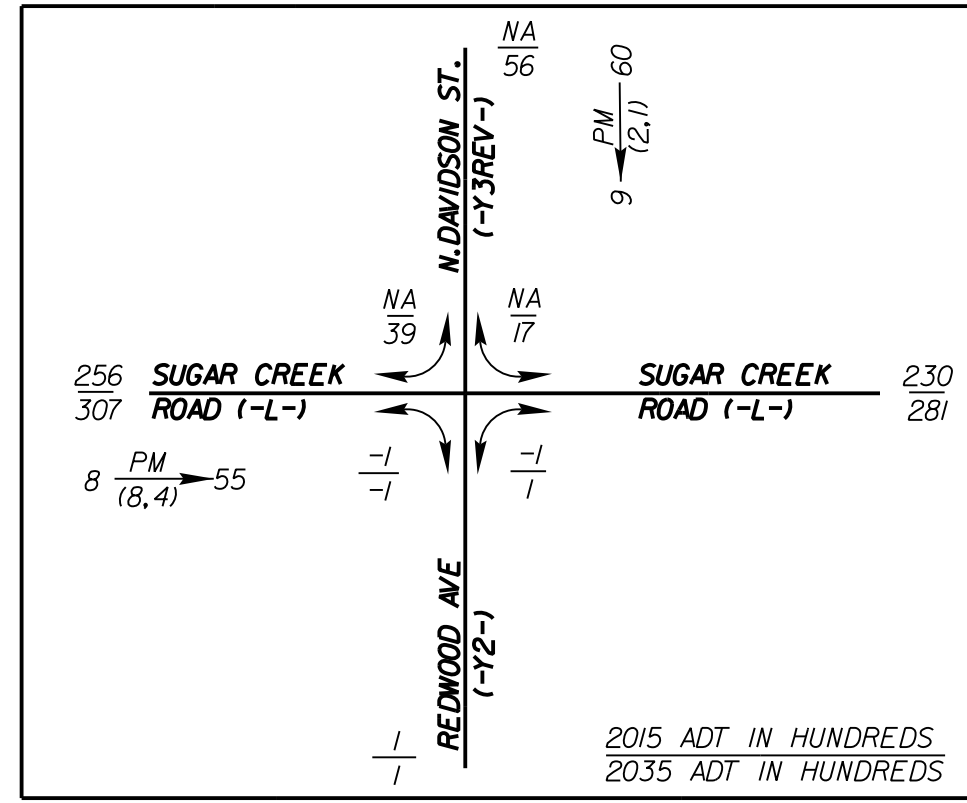
SOIL STABILIZATION TIMEFRAMES

<i>SITE DESCRIPTION</i>	<i>STABILIZATION TIME</i>	<i>TIMEFRAME EXCEPTIONS</i>
PERIMETER DIKES, SWALES, DITCHES AND SLOPES	7 DAYS	NONE
HIGH QUALITY WATER (HQW) ZONES	7 DAYS	NONE
SLOPES STEEPER THAN 3:1	7 DAYS	IF SLOPES ARE 10' OR LESS IN LENGTH AND ARE NOT STEEPER THAN 2:1, 14 DAYS ARE ALLOWED.
SLOPES 3:1 OR FLATTER	14 DAYS	7 DAYS FOR SLOPES GREATER THAN 50' IN LENGTH.
ALL OTHER AREAS WITH SLOPES FLATTER THAN 4:1	14 DAYS	NONE, EXCEPT FOR PERIMETERS AND HQW ZONES.



5565 CENTERVIEW DR, SUITE 107
 RALEIGH, NC, 27606
 (919) 851-1919 FAX (919) 851-8393
 LICENSE # F-0672

PROJECT REFERENCE NO. U-5008	SHEET NO. EC-4/CONST.4
ROADWAY DESIGN ENGINEER	HYDRAULICS ENGINEER



PARCEL #	PROPERTY OWNER'S NAME	DEED BOOK #
1	EPMORE INCORPORATED	DB 2937 PG 069
2	JEWELL B. WRIGHT, III	DB 28686 PG 727
3	ANDROMACHE E. TZANNIS	DB 9077 PG 359 PB 5 PG 273
4	NORTHMORE PROPERTIES, INC	DB 2701 PG 225
5	ROY CARVER, JR & EARL CARVER TRUSTEE	DB 19664 PG 403 PB 5 PG 273
6	WILLIAM M MOORE	DB 2463 PG 097
7	TRUSTEES OF ZION PRIMITIVE BAPTIST CHURCH	DB 3438 PG 233 PB 3 PG 206
7	TRUSTEES OF ZION PRIMITIVE BAPTIST CHURCH	DB 5608 PG 150
9	ABRAHAM LOCKHART	DB 11653 PG 043 DB 12463 PG 191 DB 11954 PG 501 MB 5 PG 414
10	J. L. SIDES PATRICIA S. PROPST	DB 9579 PG 502
45	STERLING DEVELOPMENT COMPANY	DB 2937 PG 120

-PED- CURVE DATA
 PI Sta 10+25.39
 $\Delta = 73^\circ 32' 25.7''$ (RT)
 $D = 286' 28'' 44.0''$
 $L = 25.67'$
 $T = 14.95'$
 $R = 20.00'$

-Y2- CURVE DATA
 PI Sta 12+50.11
 $\Delta = 27^\circ 41' 02.0''$ (RT)
 $D = 19' 45' 25.8''$
 $L = 140.12'$
 $T = 71.46'$
 $R = 290.00'$
 $e = NC$

-L- CURVE DATA

PI Sta 10+53.33 $\Delta = 2^\circ 01' 58.4''$ (LT) $D = 2' 17' 30.6''$ $L = 88.70'$ $T = 44.36'$ $R = 2,500.00'$ $e = NC$	PI Sta 18+92.92 $\Delta = 8^\circ 22' 16.2''$ (RT) $D = 3' 52' 16.8''$ $L = 216.23'$ $T = 108.31'$ $R = 1,480.00'$ $e = 3\%$ $runoff = 75'$
---	--

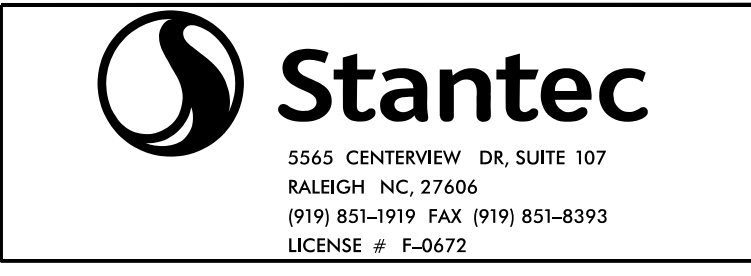
CLEARING AND GRUBBING
 EROSION CONTROL FOR
 CONSTRUCTION SHEET 4

NOTE:
 PLACE TEMPORARY ROCK SEDIMENT DAMS TYPE - B
 AND TEMPORARY ROCK SILT CHECKS TYPE - A AT
 DRAINAGE OUTLETS.

0400DEL-P30

NOTE: PLACE TEMPORARY ROCK SEDIMENT DAMS TYPE - B AND TEMPORARY ROCK SILT CHECKS TYPE - A AT DRAINAGE OUTLETS.

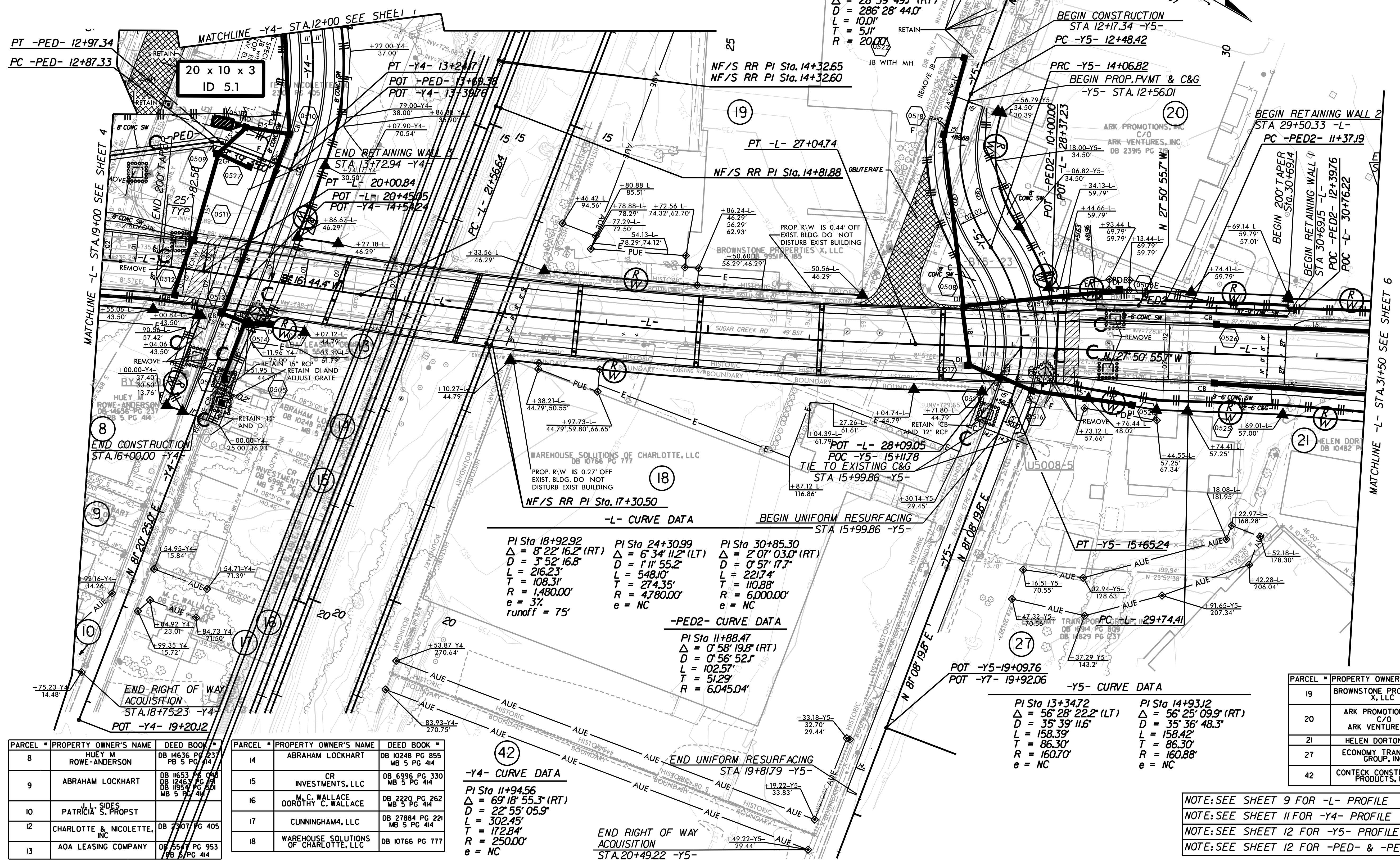
CLEARING AND GRUBBING EROSION CONTROL FOR CONSTRUCTION SHEET 5



BEGIN RIGHT OF WAY ACQUISITION STA.9+74.30 -Y5-
POT -Y5- 10+00.00

PROJECT REFERENCE NO.	SHEET NO.
U-5008	EC-5/CONST.5
R/W SHEET NO.	HYDRAULICS ENGINEER
ROADWAY DESIGN ENGINEER	

REVISIONS



-PED- CURVE DATA
 PI Sta 12+92.44
 $\Delta = 28^{\circ} 39' 49.7''$ (RT)
 $D = 286' 28'' 44.0''$
 $L = 100.0'$
 $T = 51.1'$
 $R = 2000.0'$

-L- CURVE DATA

PI Sta 18+92.92 $\Delta = 8^{\circ} 22' 16.2''$ (RT) $D = 3^{\circ} 52' 16.8''$ $L = 216.23'$ $T = 108.31'$ $R = 1,480.00'$ $e = 3\%$ runoff = 75'	PI Sta 24+30.99 $\Delta = 6^{\circ} 34' 11.2''$ (LT) $D = 1^{\circ} 11' 55.2''$ $L = 548.10'$ $T = 274.35'$ $R = 4,780.00'$ $e = NC$	PI Sta 30+85.30 $\Delta = 2^{\circ} 07' 03.0''$ (RT) $D = 0^{\circ} 57' 17.7''$ $L = 221.74'$ $T = 110.88'$ $R = 6,000.00'$ $e = NC$
---	--	--

-PED2- CURVE DATA
 PI Sta 11+88.47
 $\Delta = 0^{\circ} 58' 19.8''$ (RT)
 $D = 0^{\circ} 56' 52.1''$
 $L = 102.57'$
 $T = 51.29'$
 $R = 6,045.04'$

-Y5- CURVE DATA

PI Sta 13+34.72 $\Delta = 56^{\circ} 28' 22.2''$ (LT) $D = 35^{\circ} 39' 11.6''$ $L = 158.39'$ $T = 86.30'$ $R = 160.70'$ $e = NC$	PI Sta 14+93.12 $\Delta = 56^{\circ} 25' 09.9''$ (RT) $D = 35^{\circ} 36' 48.3''$ $L = 158.42'$ $T = 86.30'$ $R = 160.88'$ $e = NC$
---	---

-Y4- CURVE DATA
 PI Sta 11+94.56
 $\Delta = 69^{\circ} 18' 55.3''$ (RT)
 $D = 22^{\circ} 55' 05.9''$
 $L = 302.45'$
 $T = 172.84'$
 $R = 250.00'$
 $e = NC$

PARCEL #	PROPERTY OWNER'S NAME	DEED BOOK #
8	HUEY M ROWE-ANDERSON	DB 14636 PG 237 PB 5 PG 414
9	ABRAHAM LOCKHART	DB 11653 PG 046 DB 12463 PG 891 MB 5 PG 414
10	J. L. SIDES PATRICIA S. PROPST	DB 11954 PG 501 MB 5 PG 414
12	CHARLOTTE & NICOLETTE, INC	DB 2707 PG 405
13	AOA LEASING COMPANY	DB 5547 PG 953 PB 5 PG 414

PARCEL #	PROPERTY OWNER'S NAME	DEED BOOK #
14	ABRAHAM LOCKHART	DB 10248 PG 855 MB 5 PG 414
15	CR INVESTMENTS, LLC	DB 6996 PG 330 MB 5 PG 414
16	M. C. WALLACE DOROTHY C. WALLACE	DB 2220 PG 262 MB 5 PG 414
17	CUNNINGHAM4, LLC	DB 27884 PG 221 MB 5 PG 414
18	WAREHOUSE SOLUTIONS OF CHARLOTTE, LLC	DB 10766 PG 777

PARCEL #	PROPERTY OWNER'S NAME	DEED BOOK #
19	BROWNSTONE PROPERTIES X, LLC	DB 9951 PG 185
20	ARK PROMOTIONS, INC C/O ARK VENTURES, INC	DB 23915 PG 719
21	HELEN DORTON, LLC	DB 10482 PG 789
27	ECONOMY TRANSPORT GROUP, INC	DB 16914 PG 809 DB 14829 PG 237
42	CONTECK CONSTRUCTION PRODUCTS, INC	DB 8531 PG 814

NOTE: SEE SHEET 9 FOR -L- PROFILE
 NOTE: SEE SHEET 11 FOR -Y4- PROFILE
 NOTE: SEE SHEET 12 FOR -Y5- PROFILE
 NOTE: SEE SHEET 12 FOR -PED- & -PED2- PROFILE

0400DEL-P30

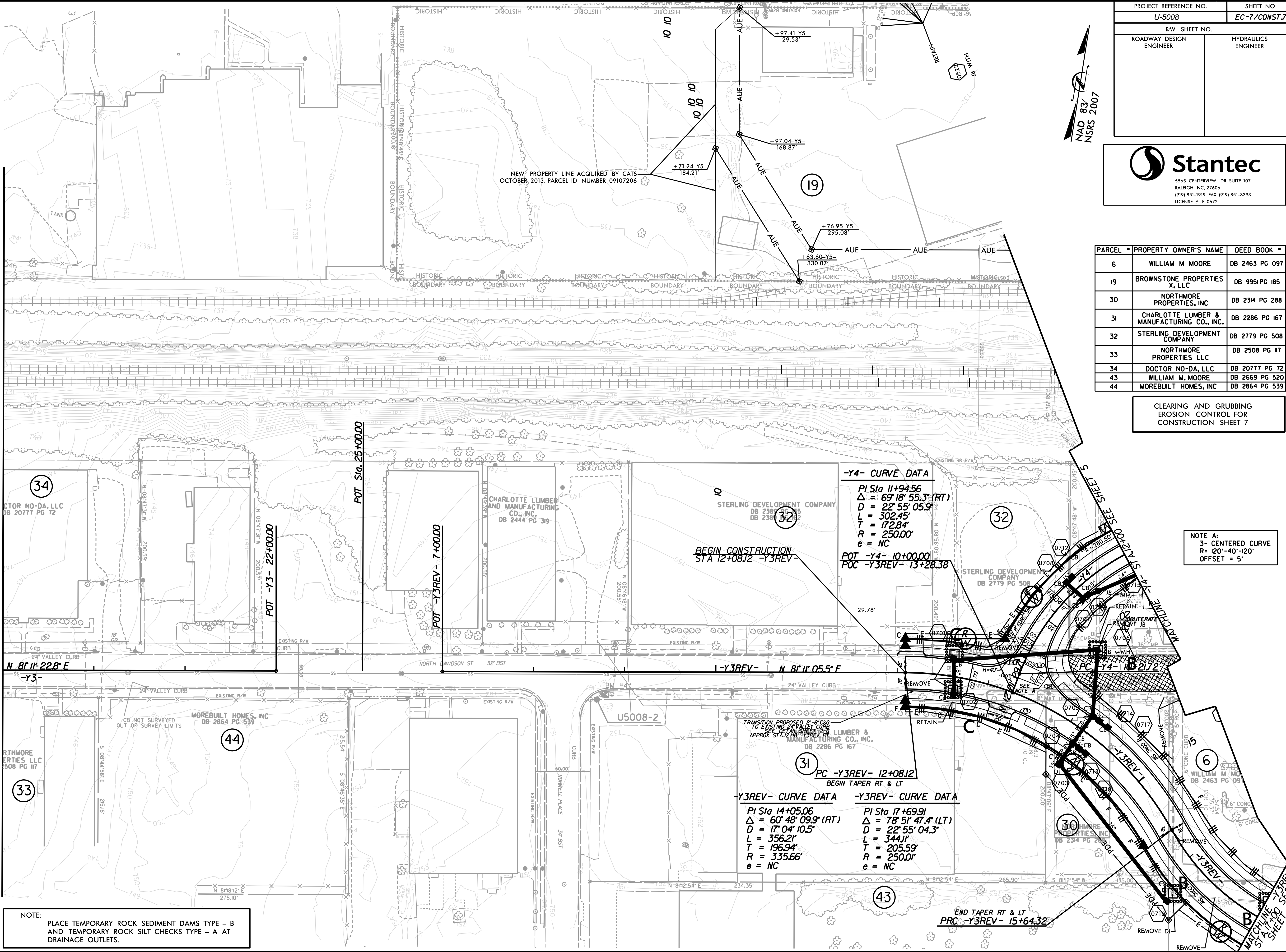
REVISIONS

PROJECT REFERENCE NO. U-5008	SHEET NO. EC-7/CONST.7
R/W SHEET NO. ROADWAY DESIGN ENGINEER	HYDRAULICS ENGINEER

Stantec
 5545 CENTERVIEW DR, SUITE 107
 RALEIGH, NC, 27606
 (919) 851-1919 FAX (919) 851-8393
 LICENSE # F-0672

PARCEL #	PROPERTY OWNER'S NAME	DEED BOOK #
6	WILLIAM M MOORE	DB 2463 PG 097
19	BROWNSTONE PROPERTIES X, LLC	DB 9951 PG 185
30	NORTHMORE PROPERTIES, INC	DB 2314 PG 288
31	CHARLOTTE LUMBER & MANUFACTURING CO., INC.	DB 2286 PG 167
32	STERLING DEVELOPMENT COMPANY	DB 2779 PG 508
33	NORTHMORE PROPERTIES LLC	DB 2508 PG 117
34	DOCTOR NO-DA, LLC	DB 20777 PG 72
43	WILLIAM M. MOORE	DB 2669 PG 520
44	MOREBUILT HOMES, INC	DB 2864 PG 539

CLEARING AND GRUBBING
 EROSION CONTROL FOR
 CONSTRUCTION SHEET 7



-Y4- CURVE DATA
 PI Sta 11+94.56
 $\Delta = 69' 18" 55.3" (RT)$
 $D = 22' 55" 05.9"$
 $L = 302.45'$
 $T = 172.84'$
 $R = 250.00'$
 $e = NC$
 POT -Y4- 10+00.00
 POC -Y3REV- 13+28.38

-Y3REV- CURVE DATA
 PI Sta 14+05.06
 $\Delta = 60' 48" 09.9" (RT)$
 $D = 17' 04" 10.5"$
 $L = 356.21'$
 $T = 196.94'$
 $R = 335.66'$
 $e = NC$

-Y3REV- CURVE DATA
 PI Sta 17+69.91
 $\Delta = 78' 51" 47.4" (LT)$
 $D = 22' 55" 04.3"$
 $L = 344.11'$
 $T = 205.59'$
 $R = 250.01'$
 $e = NC$

NOTE A:
 3- CENTERED CURVE
 $R = 120'-40"-120'$
 OFFSET = 5'

NOTE:
 PLACE TEMPORARY ROCK SEDIMENT DAMS TYPE - B
 AND TEMPORARY ROCK SILT CHECKS TYPE - A AT
 DRAINAGE OUTLETS.

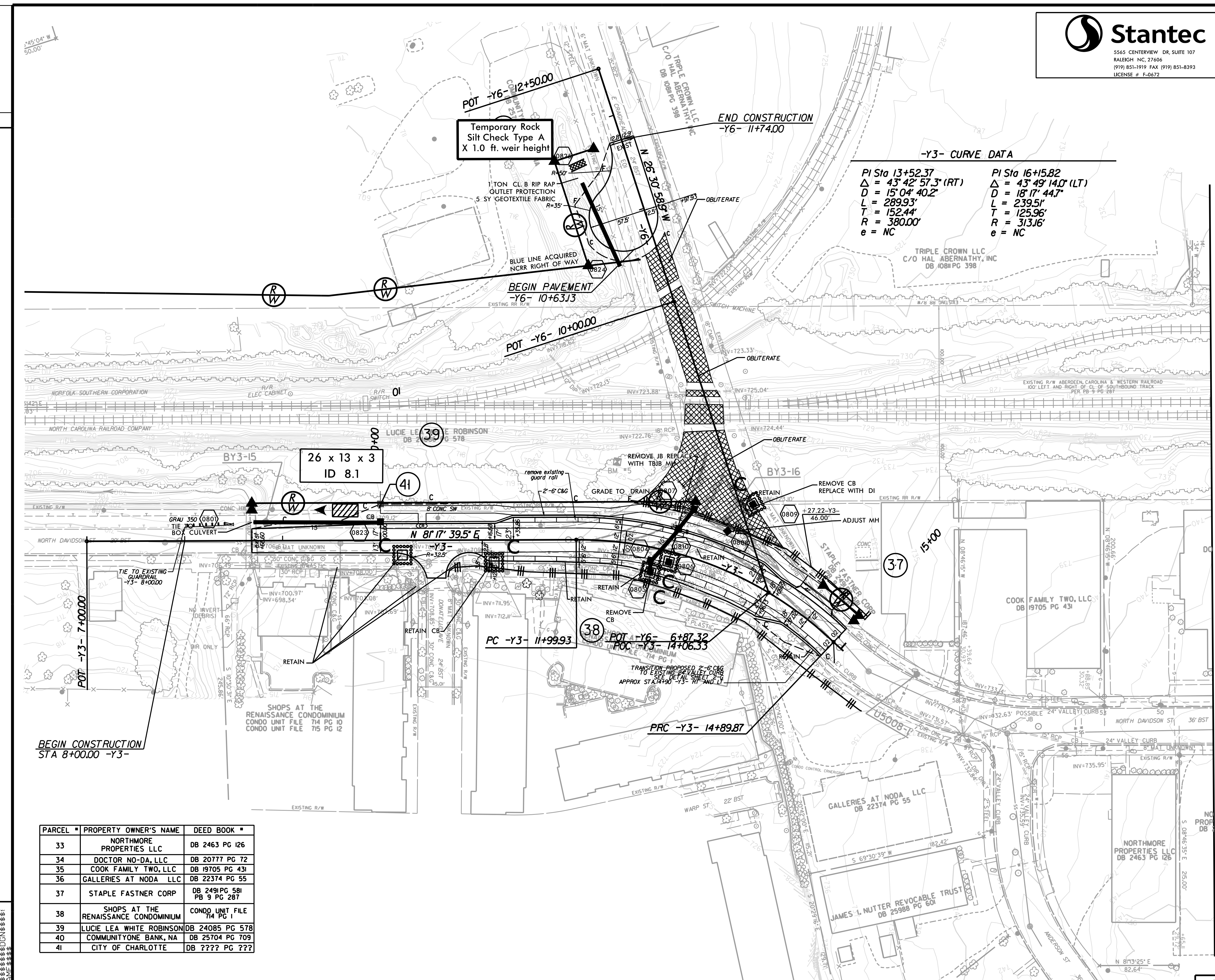
MATCHLINE -Y3- STA. 19+40.00 SEE SHEET 8

TRANSITION PROPOSED 2'-6" CONC TO EXISTING 24" VALLEY CURB APPROX STA 12+81.25 SEE DETAIL SHEET 7

MATCHLINE -Y4- STA. 2700.00 SEE SHEET 5

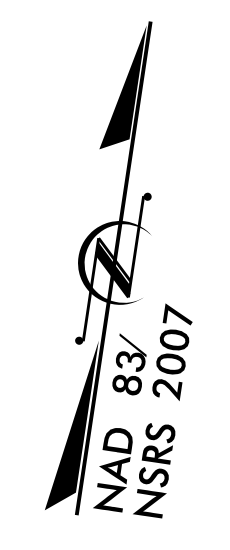
MATCHLINE -Y3REV- STA. 1500.00 SEE SHEET 4

PROJECT REFERENCE NO. U-5008	SHEET NO. EC-8/CONST.8
RW SHEET NO.	
ROADWAY DESIGN ENGINEER	HYDRAULICS ENGINEER



-Y3- CURVE DATA

PI Sta 13+52.37	PI Sta 16+15.82
Δ = 43° 42' 57.3" (RT)	Δ = 43° 49' 14.0" (LT)
D = 15° 04' 40.2"	D = 18° 17' 44.7"
L = 289.93'	L = 239.51'
T = 152.44'	T = 125.96'
R = 380.00'	R = 313.16'
e = NC	e = NC



REVISIONS

BEGIN CONSTRUCTION
STA 8+00.00 -Y3-

PARCEL #	PROPERTY OWNER'S NAME	DEED BOOK #
33	NORTHMORE PROPERTIES LLC	DB 2463 PG 126
34	DOCTOR NO-DA, LLC	DB 20777 PG 72
35	COOK FAMILY TWO, LLC	DB 19705 PG 431
36	GALLERIES AT NODA LLC	DB 22374 PG 55
37	STAPLE FASTNER CORP	DB 2491 PG 581 PB 9 PG 287
38	SHOPS AT THE RENAISSANCE CONDOMINIUM	CONDO UNIT FILE 74 PG 1
39	LUCIE LEA WHITE ROBINSON	DB 24085 PG 578
40	COMMUNITYONE BANK, NA	DB 25704 PG 709
41	CITY OF CHARLOTTE	DB ???? PG ???

MATCHLINE -Y3- STA.19+00 SEE SHEET 7

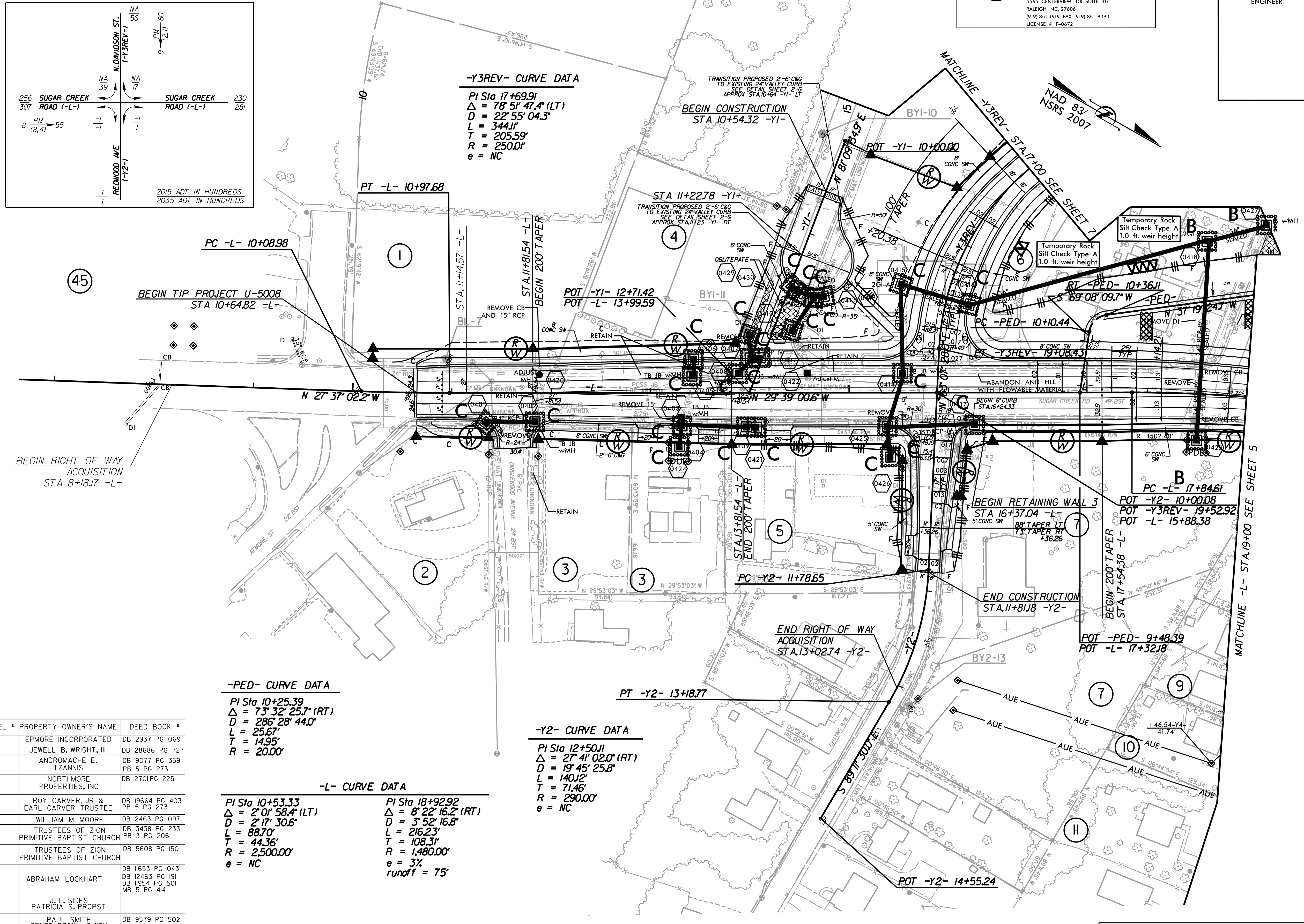
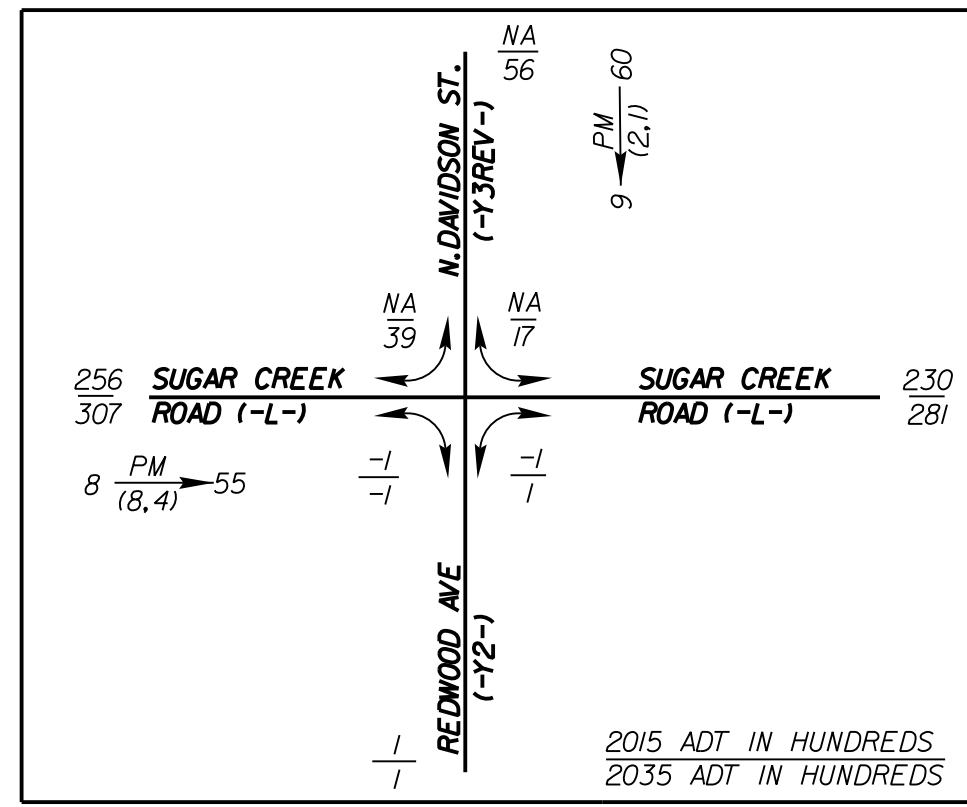
CLEARING AND GRUBBING
EROSION CONTROL FOR
CONSTRUCTION SHEET 8

NOTE:
PLACE TEMPORARY ROCK SEDIMENT DAMS TYPE - B
AND TEMPORARY ROCK SILT CHECKS TYPE - A AT
DRAINAGE OUTLETS.



5565 CENTERVIEW DR, SUITE 107
 RALEIGH, NC, 27606
 (919) 851-1919 FAX (919) 851-8393
 LICENSE # F-0672

PROJECT REFERENCE NO. U-5008	SHEET NO. EC-9/CONST.4
ROADWAY DESIGN ENGINEER	HYDRAULICS ENGINEER



-Y3REV- CURVE DATA
 PI Sta 17+69.91
 $\Delta = 78^{\circ} 51' 47.4" (LT)$
 $D = 22^{\circ} 55' 04.3"$
 $L = 344.11'$
 $T = 205.59'$
 $R = 250.01'$
 $e = NC$

-PED- CURVE DATA
 PI Sta 10+25.39
 $\Delta = 73^{\circ} 32' 25.7" (RT)$
 $D = 286^{\circ} 28' 44.0"$
 $L = 25.67'$
 $T = 14.95'$
 $R = 20.00'$

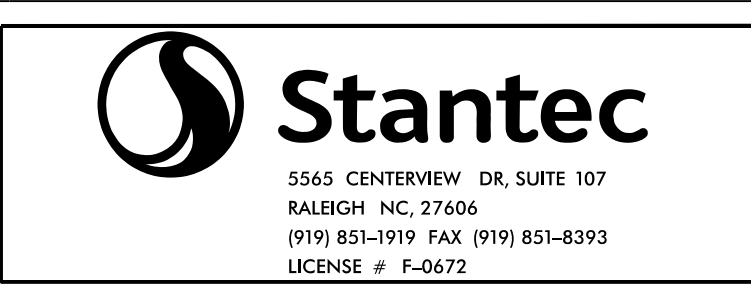
-Y2- CURVE DATA
 PI Sta 12+50.11
 $\Delta = 27^{\circ} 41' 02.0" (RT)$
 $D = 19^{\circ} 45' 25.8"$
 $L = 140.12'$
 $T = 71.46'$
 $R = 290.00'$
 $e = NC$

-L- CURVE DATA

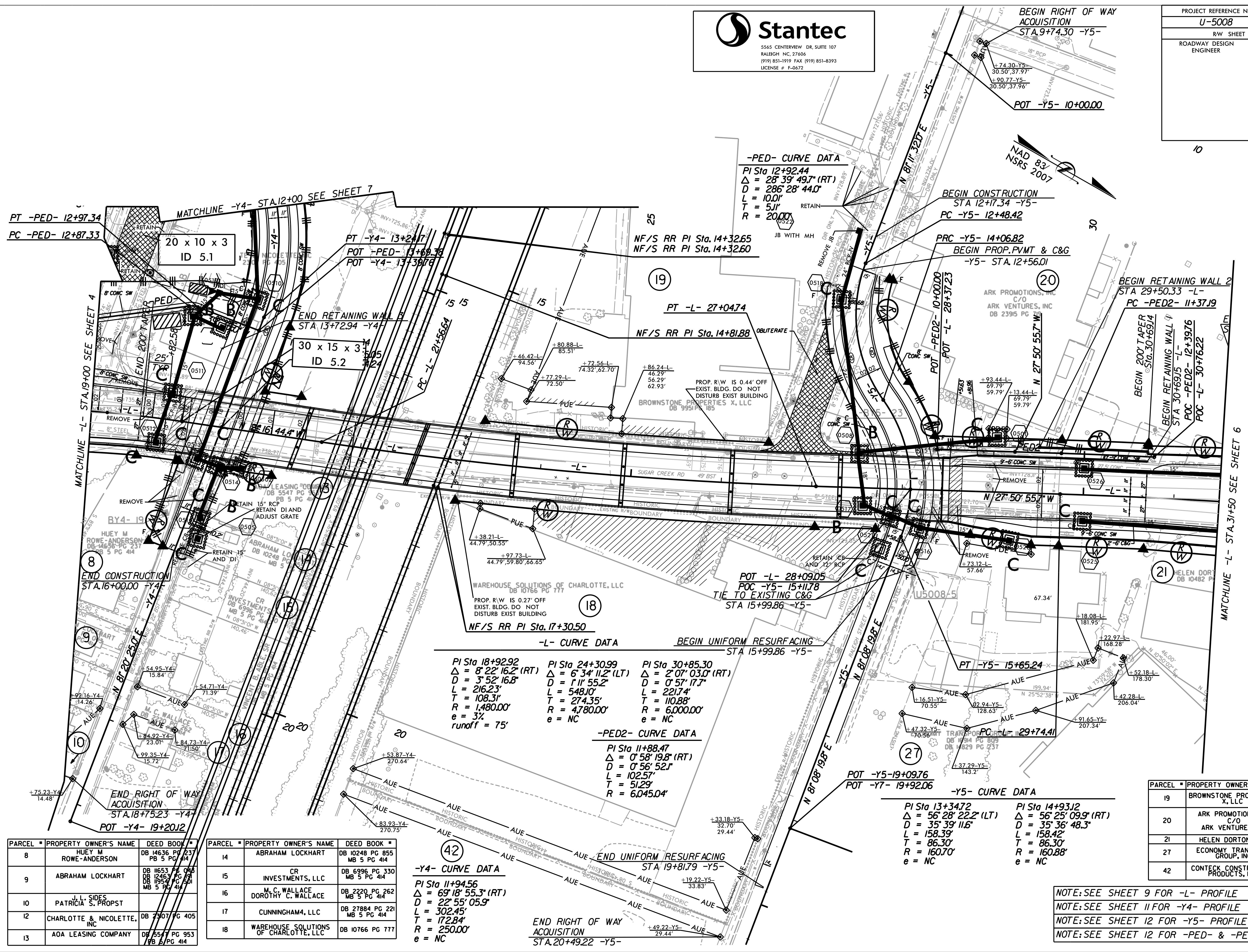
PI Sta 10+53.33 $\Delta = 2^{\circ} 01' 58.4" (LT)$ $D = 2^{\circ} 17' 30.6"$ $L = 88.70'$ $T = 44.36'$ $R = 2,500.00'$ $e = NC$	PI Sta 18+92.92 $\Delta = 8^{\circ} 22' 16.2" (RT)$ $D = 3^{\circ} 52' 16.8"$ $L = 216.23'$ $T = 108.31'$ $R = 1,480.00'$ $e = 3\%$ $runoff = 75'$
--	---

PARCEL #	PROPERTY OWNER'S NAME	DEED BOOK #
1	EPMORE INCORPORATED	DB 2937 PG 069
2	JEWELL B. WRIGHT, III	DB 28686 PG 727
3	ANDROMACHE E. TZANNIS	DB 9077 PG 359 PB 5 PG 273
4	NORTHMORE PROPERTIES, INC	DB 2701 PG 225
5	ROY CARVER, JR & EARL CARVER TRUSTEE	DB 19664 PG 403 PB 5 PG 273
6	WILLIAM M MOORE	DB 2463 PG 097
7	TRUSTEES OF ZION PRIMITIVE BAPTIST CHURCH	DB 3438 PG 233 PB 3 PG 206
7	TRUSTEES OF ZION PRIMITIVE BAPTIST CHURCH	DB 5608 PG 150
9	ABRAHAM LOCKHART	DB 11653 PG 043 DB 12463 PG 191 DB 11954 PG 501 MB 5 PG 414
10	J. L. SIDES PATRICIA S. PROPST	
11	PAUL SMITH RENEE BROWN SMITH	DB 9579 PG 502
45	STERLING DEVELOPMENT COMPANY	DB 2937 PG 120

NOTE: SEE SHEET 9 FOR -L- PROFILE
 NOTE: SEE SHEET 10 FOR -Y1- & -Y2- PROFILE
 NOTE: SEE SHEET 11 FOR -Y3REV- PROFILE
 NOTE: SEE SHEET 12 FOR -PED- PROFILE



PROJECT REFERENCE NO.	SHEET NO.
U-5008	EC-10/CONST.5
R/W SHEET NO.	HYDRAULICS ENGINEER
ROADWAY DESIGN ENGINEER	



-PED- CURVE DATA
 PI Sta 12+92.44
 $\Delta = 28^\circ 39' 49.7''$ (RT)
 $D = 286' 28'' 44.0''$
 $L = 100.0'$
 $T = 51.1'$
 $R = 2000'$

BEGIN CONSTRUCTION
 STA 12+17.34 -Y5-
 PC -Y5- 12+48.42

PRC -Y5- 14+06.82
 BEGIN PROP. PVMT & C&G
 -Y5- STA. 12+56.01

BEGIN RETAINING WALL 2
 STA 29+50.33 -L-
 PC -PED2- 11+37.19

PT -L- 27+04.74
 NF/S RR PI Sta. 14+81.88

POT -L- 28+09.05
 POC -Y5- 15+11.78
 TIE TO EXISTING C&G
 STA 15+99.86 -Y5-

-L- CURVE DATA

PI Sta 18+92.92 $\Delta = 8^\circ 22' 16.2''$ (RT) $D = 3^\circ 52' 16.8''$ $L = 216.23'$ $T = 108.31'$ $R = 1,480.00'$ $e = 3\%$ runoff = 75'	PI Sta 24+30.99 $\Delta = 6^\circ 34' 11.2''$ (LT) $D = 1^\circ 11' 55.2''$ $L = 548.10'$ $T = 274.35'$ $R = 4,780.00'$ $e = NC$	PI Sta 30+85.30 $\Delta = 2^\circ 07' 03.0''$ (RT) $D = 0^\circ 57' 17.7''$ $L = 221.74'$ $T = 110.88'$ $R = 6,000.00'$ $e = NC$
---	--	--

-PED2- CURVE DATA
 PI Sta 11+88.47
 $\Delta = 0^\circ 58' 19.8''$ (RT)
 $D = 0^\circ 56' 52.1''$
 $L = 102.57'$
 $T = 51.29'$
 $R = 6,045.04'$

-Y5- CURVE DATA

PI Sta 13+34.72 $\Delta = 56^\circ 28' 22.2''$ (LT) $D = 35^\circ 39' 11.6''$ $L = 158.39'$ $T = 86.30'$ $R = 160.70'$ $e = NC$	PI Sta 14+93.12 $\Delta = 56^\circ 25' 09.9''$ (RT) $D = 35^\circ 36' 48.3''$ $L = 158.42'$ $T = 86.30'$ $R = 160.88'$ $e = NC$
---	---

-Y4- CURVE DATA
 PI Sta 11+94.56
 $\Delta = 69^\circ 18' 55.3''$ (RT)
 $D = 22^\circ 55' 05.9''$
 $L = 302.45'$
 $T = 172.84'$
 $R = 250.00'$
 $e = NC$

PARCEL #	PROPERTY OWNER'S NAME	DEED BOOK #
8	HUEY M ROWE-ANDERSON	DB 14636 PG 237 PB 5 PG 414
9	ABRAHAM LOCKHART	DB 11653 PG 046 DB 12463 PG 891 DB 11954 PG 501 MB 5 PG 414
10	J. L. SIDES PATRICIA S. PROPST	
12	CHARLOTTE & NICOLETTE, INC	DB 2707 PG 405
13	AOA LEASING COMPANY	DB 5547 PG 953 PB 6 PG 414

PARCEL #	PROPERTY OWNER'S NAME	DEED BOOK #
14	ABRAHAM LOCKHART	DB 10248 PG 855 MB 5 PG 414
15	CR INVESTMENTS, LLC	DB 6996 PG 330 MB 5 PG 414
16	M. C. WALLACE DOROTHY C. WALLACE	DB 2220 PG 262 MB 5 PG 414
17	CUNNINGHAM4, LLC	DB 27884 PG 221 MB 5 PG 414
18	WAREHOUSE SOLUTIONS OF CHARLOTTE, LLC	DB 10766 PG 777

PARCEL #	PROPERTY OWNER'S NAME	DEED BOOK #
19	BROWNSTONE PROPERTIES X, LLC	DB 9951 PG 185
20	ARK PROMOTIONS, INC C/O ARK VENTURES, INC	DB 23915 PG 719
21	HELEN DORTON, LLC	DB 10482 PG 789
27	ECONOMY TRANSPORT GROUP, INC	DB 16914 PG 809 DB 14829 PG 237
42	CONTECK CONSTRUCTION PRODUCTS, INC	DB 8531 PG 814

NOTE: SEE SHEET 9 FOR -L- PROFILE
 NOTE: SEE SHEET 11 FOR -Y4- PROFILE
 NOTE: SEE SHEET 12 FOR -Y5- PROFILE
 NOTE: SEE SHEET 12 FOR -PED- & -PED2- PROFILE

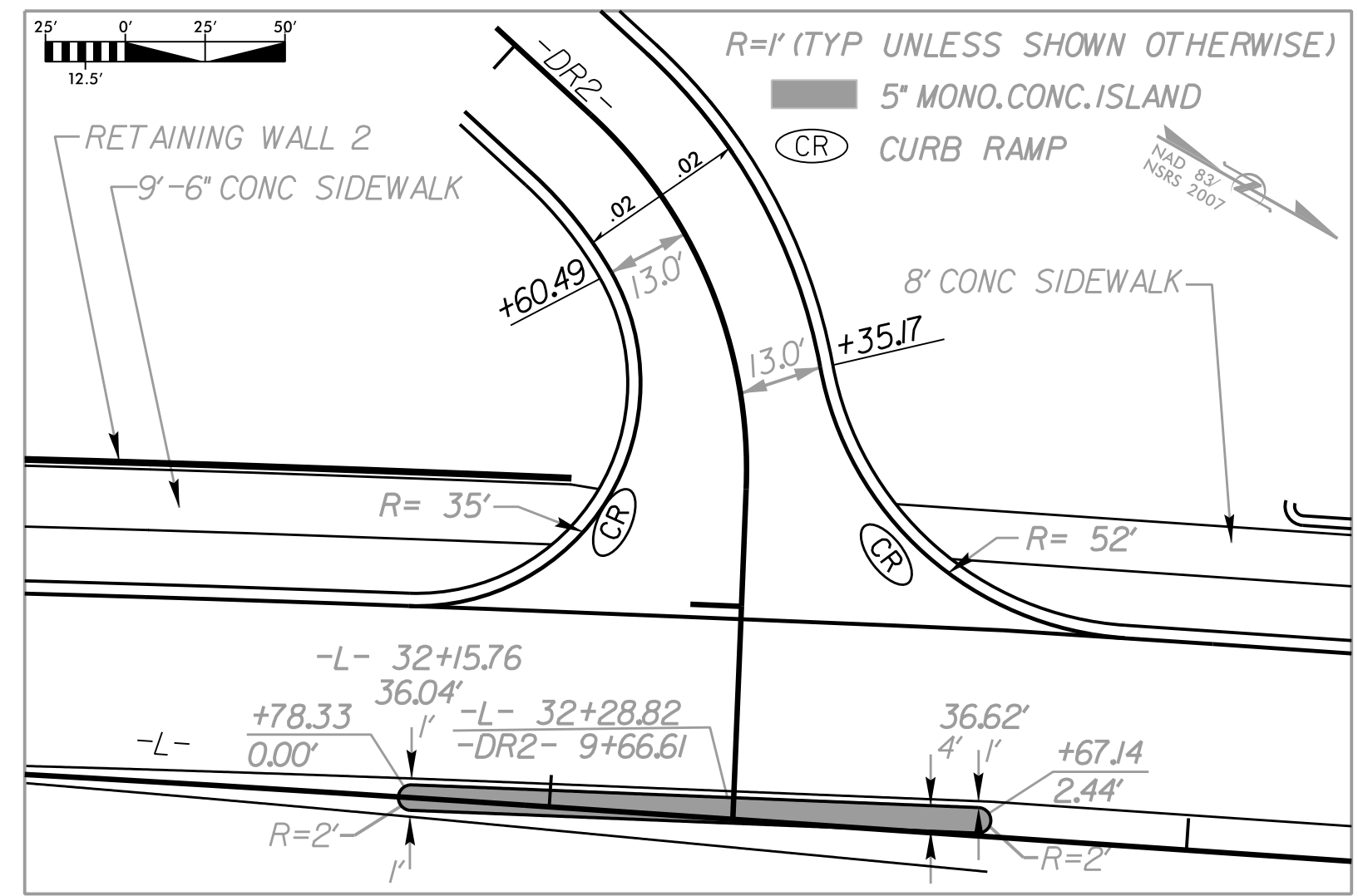


5565 CENTERVIEW DR, SUITE 107
RALEIGH, NC, 27606
(919) 851-1919 FAX (919) 851-8393
LICENSE # F-0672

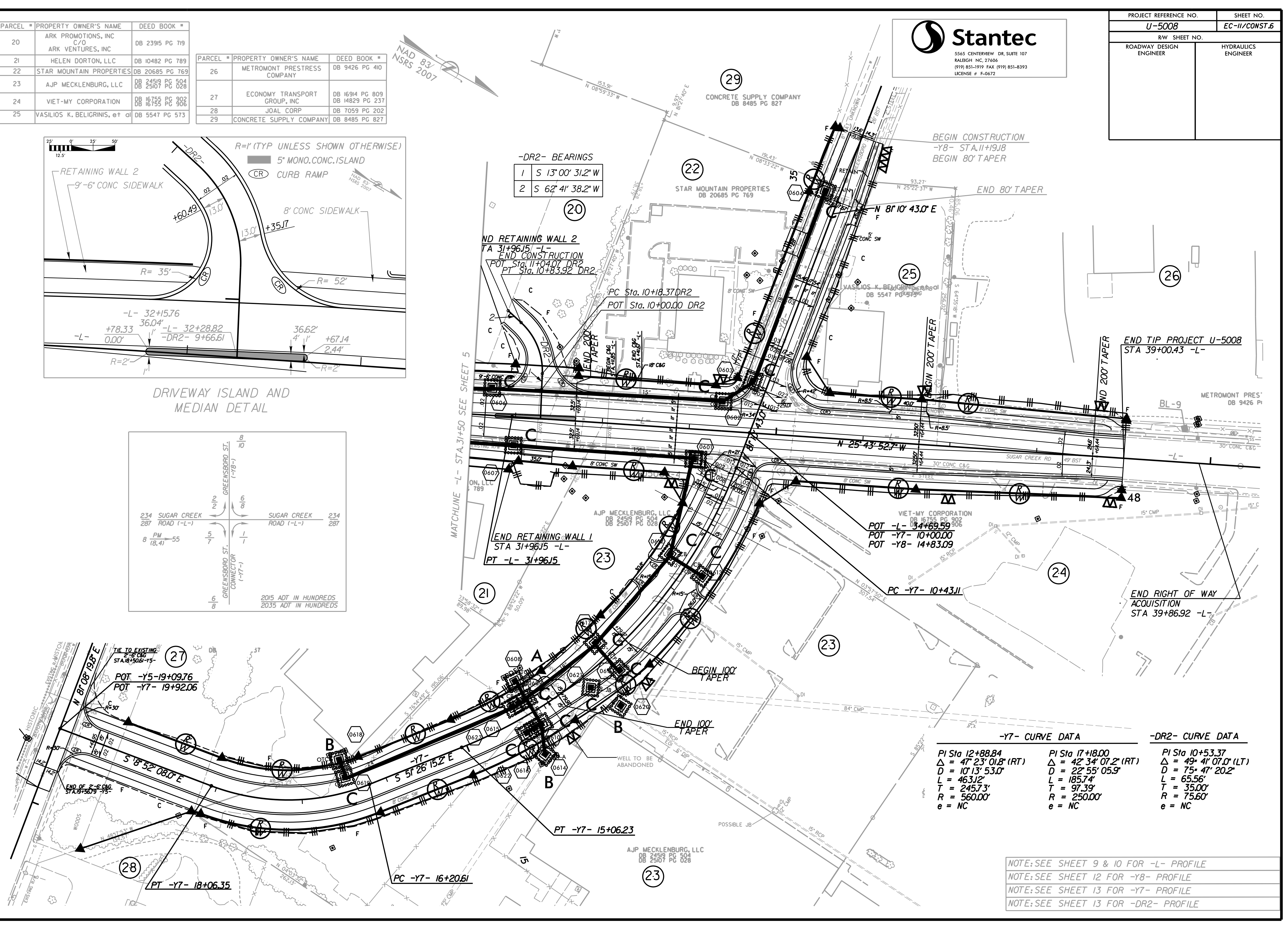
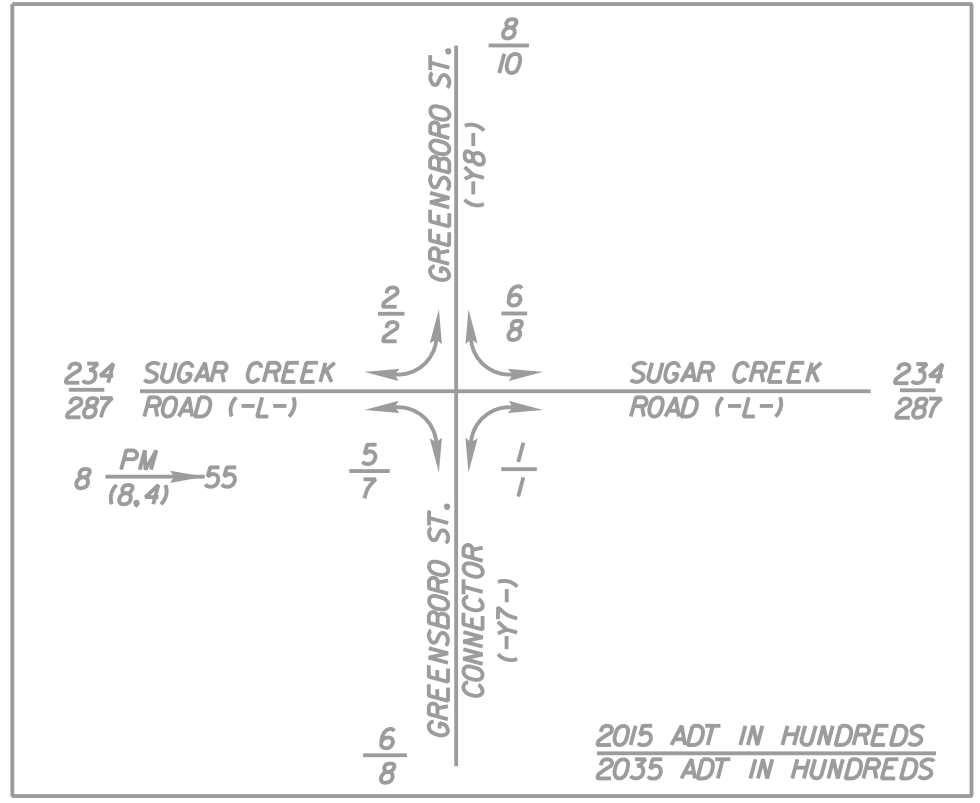
PROJECT REFERENCE NO. U-5008	SHEET NO. EC-II/CONST.6
R/W SHEET NO.	HYDRAULICS ENGINEER
ROADWAY DESIGN ENGINEER	

PARCEL #	PROPERTY OWNER'S NAME	DEED BOOK #
20	ARK PROMOTIONS, INC C/O ARK VENTURES, INC	DB 23915 PG 719
21	HELEN DORTON, LLC	DB 10482 PG 789
22	STAR MOUNTAIN PROPERTIES	DB 20685 PG 769
23	AJP MECKLENBURG, LLC	DB 24519 PG 504 DB 25107 PG 028
24	VIET-MY CORPORATION	DB 16755 PG 902 DB 16755 PG 906
25	VASILIOS K. BELIGRINIS, et al	DB 5547 PG 573

PARCEL #	PROPERTY OWNER'S NAME	DEED BOOK #
26	METROMONT PRESTRESS COMPANY	DB 9426 PG 410
27	ECONOMY TRANSPORT GROUP, INC	DB 16914 PG 809 DB 14829 PG 237
28	JOAL CORP	DB 7059 PG 202
29	CONCRETE SUPPLY COMPANY	DB 8485 PG 827



DRIVEWAY ISLAND AND MEDIAN DETAIL



-Y7- CURVE DATA		-DR2- CURVE DATA	
PI Sta 12+88.84	Δ = 47° 23' 01.8" (RT)	PI Sta 17+18.00	Δ = 42° 34' 07.2" (RT)
D = 10' 13' 53.0"	L = 463.12'	D = 22° 55' 05.9"	L = 185.74'
T = 245.73'	R = 560.00'	T = 97.39'	R = 250.00'
e = NC		e = NC	

NOTE: SEE SHEET 9 & 10 FOR -L- PROFILE
NOTE: SEE SHEET 12 FOR -Y8- PROFILE
NOTE: SEE SHEET 13 FOR -Y7- PROFILE
NOTE: SEE SHEET 13 FOR -DR2- PROFILE

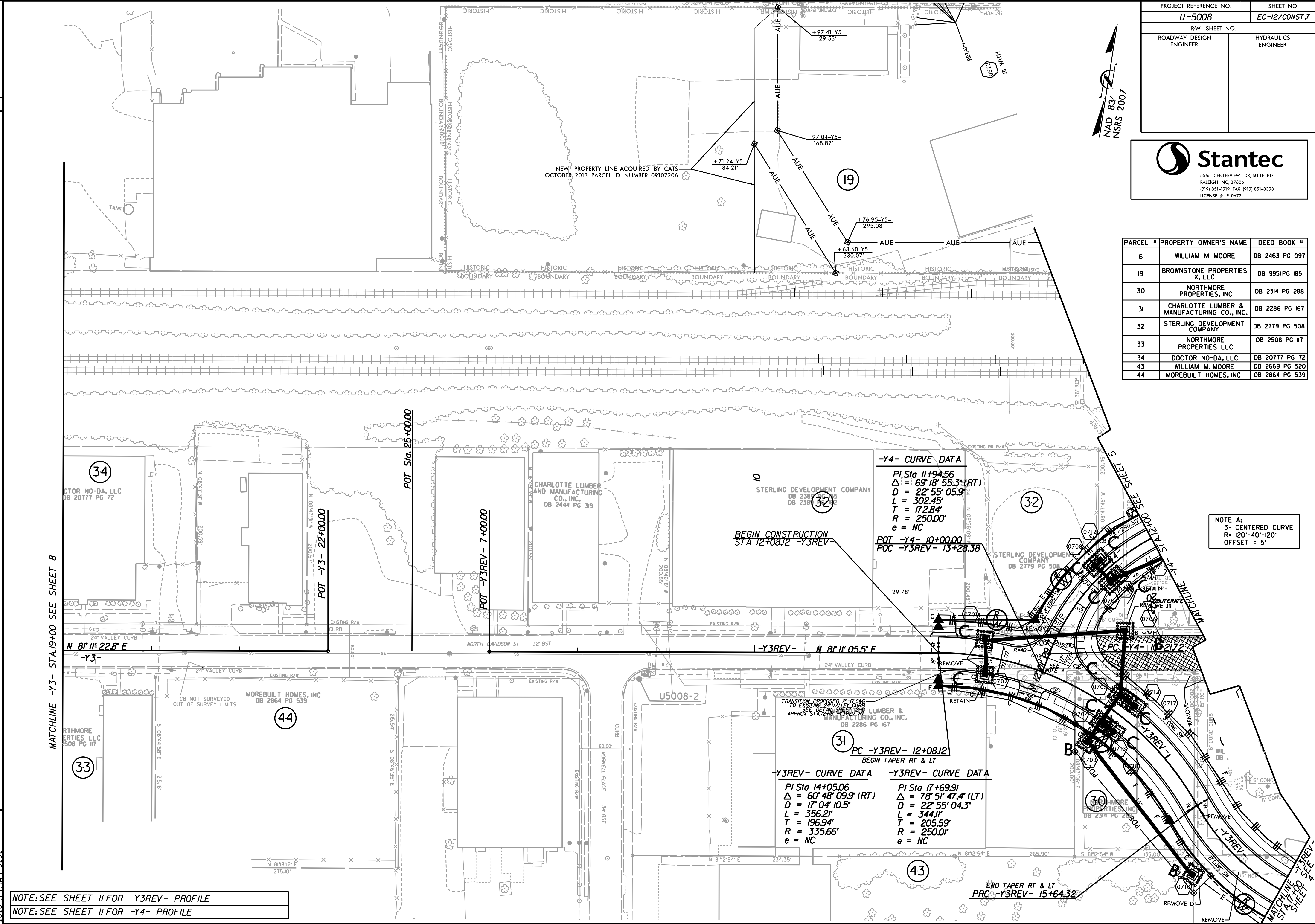
0400DEL-P30

REVISIONS

PROJECT REFERENCE NO. U-5008		SHEET NO. EC-12/CONST.7	
R/W SHEET NO. ROADWAY DESIGN ENGINEER		HYDRAULICS ENGINEER	



PARCEL #	PROPERTY OWNER'S NAME	DEED BOOK #
6	WILLIAM M MOORE	DB 2463 PG 097
19	BROWNSTONE PROPERTIES X, LLC	DB 9951 PG 185
30	NORTHMORE PROPERTIES, INC	DB 2314 PG 288
31	CHARLOTTE LUMBER & MANUFACTURING CO., INC.	DB 2286 PG 167
32	STERLING DEVELOPMENT COMPANY	DB 2779 PG 508
33	NORTHMORE PROPERTIES LLC	DB 2508 PG 117
34	DOCTOR NO-DA, LLC	DB 20777 PG 72
43	WILLIAM M. MOORE	DB 2669 PG 520
44	MOREBUILT HOMES, INC	DB 2864 PG 539



-Y4- CURVE DATA
 PI Sta 11+94.56
 $\Delta = 69^{\circ} 18' 55.3''$ (RT)
 D = 22' 55' 05.9"
 L = 302.45'
 T = 172.84'
 R = 250.00'
 e = NC
 POT -Y4- 10+00.00
 POC -Y3REV- 13+28.38

-Y3REV- CURVE DATA
 PI Sta 14+05.06
 $\Delta = 60^{\circ} 48' 09.9''$ (RT)
 D = 17' 04' 10.5"
 L = 356.21'
 T = 196.94'
 R = 335.66'
 e = NC

-Y3REV- CURVE DATA
 PI Sta 17+69.91
 $\Delta = 78^{\circ} 51' 47.4''$ (LT)
 D = 22' 55' 04.3"
 L = 344.11'
 T = 205.59'
 R = 250.01'
 e = NC

NOTE A:
 3- CENTERED CURVE
 R= 120'-40'-120'
 OFFSET = 5'

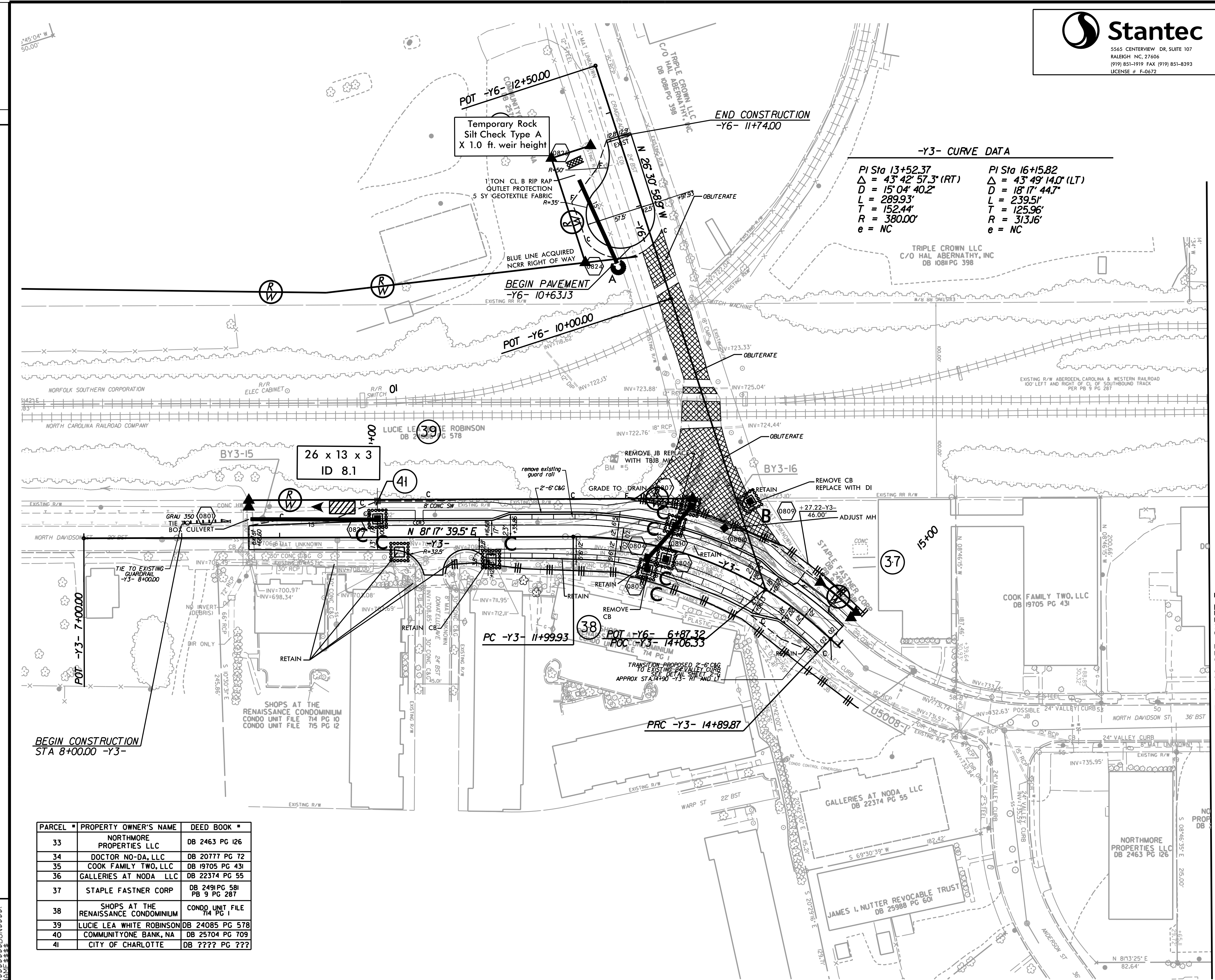
NOTE: SEE SHEET 11 FOR -Y3REV- PROFILE
 NOTE: SEE SHEET 11 FOR -Y4- PROFILE

MATCHLINE -Y3- STA. 19+40.00 SEE SHEET 8

MATCHLINE -Y4- STA. 12+00.00 SEE SHEET 5

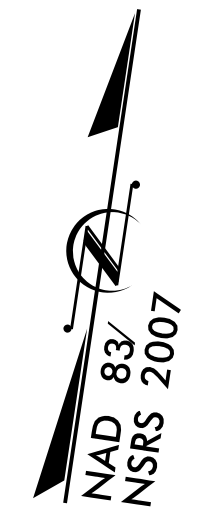
SYSTEMS
 L
 C
 S
 U
 S
 E
 R
 N
 A
 M
 E

PROJECT REFERENCE NO.	SHEET NO.
U-5008	EC-13/CONST.B
R/W SHEET NO.	
ROADWAY DESIGN ENGINEER	HYDRAULICS ENGINEER



-Y3- CURVE DATA

PI Sta 13+52.37	PI Sta 16+15.82
$\Delta = 43^\circ 42' 57.3''$ (RT)	$\Delta = 43^\circ 49' 14.0''$ (LT)
D = 15' 04' 40.2"	D = 18' 17' 44.7"
L = 289.93'	L = 239.51'
T = 152.44'	T = 125.96'
R = 380.00'	R = 313.16'
e = NC	e = NC



REVISIONS

PARCEL #	PROPERTY OWNER'S NAME	DEED BOOK #
33	NORTHMORE PROPERTIES LLC	DB 2463 PG 126
34	DOCTOR NO-DA, LLC	DB 20777 PG 72
35	COOK FAMILY TWO, LLC	DB 19705 PG 431
36	GALLERIES AT NODA, LLC	DB 22374 PG 55
37	STAPLE FASTNER CORP	DB 2491 PG 581 PB 9 PG 287
38	SHOPS AT THE RENAISSANCE CONDOMINIUM	CONDO UNIT FILE 714 PG 1
39	LUCIE LEA WHITE ROBINSON	DB 24085 PG 578
40	COMMUNITYONE BANK, NA	DB 25704 PG 709
41	CITY OF CHARLOTTE	DB ??? PG ???

MATCHLINE -Y3- STA 19+00 SEE SHEET 7

NOTE: SEE SHEET 10 FOR -Y3- PROFILE
 NOTE: SEE SHEET 12 FOR -Y6- PROFILE