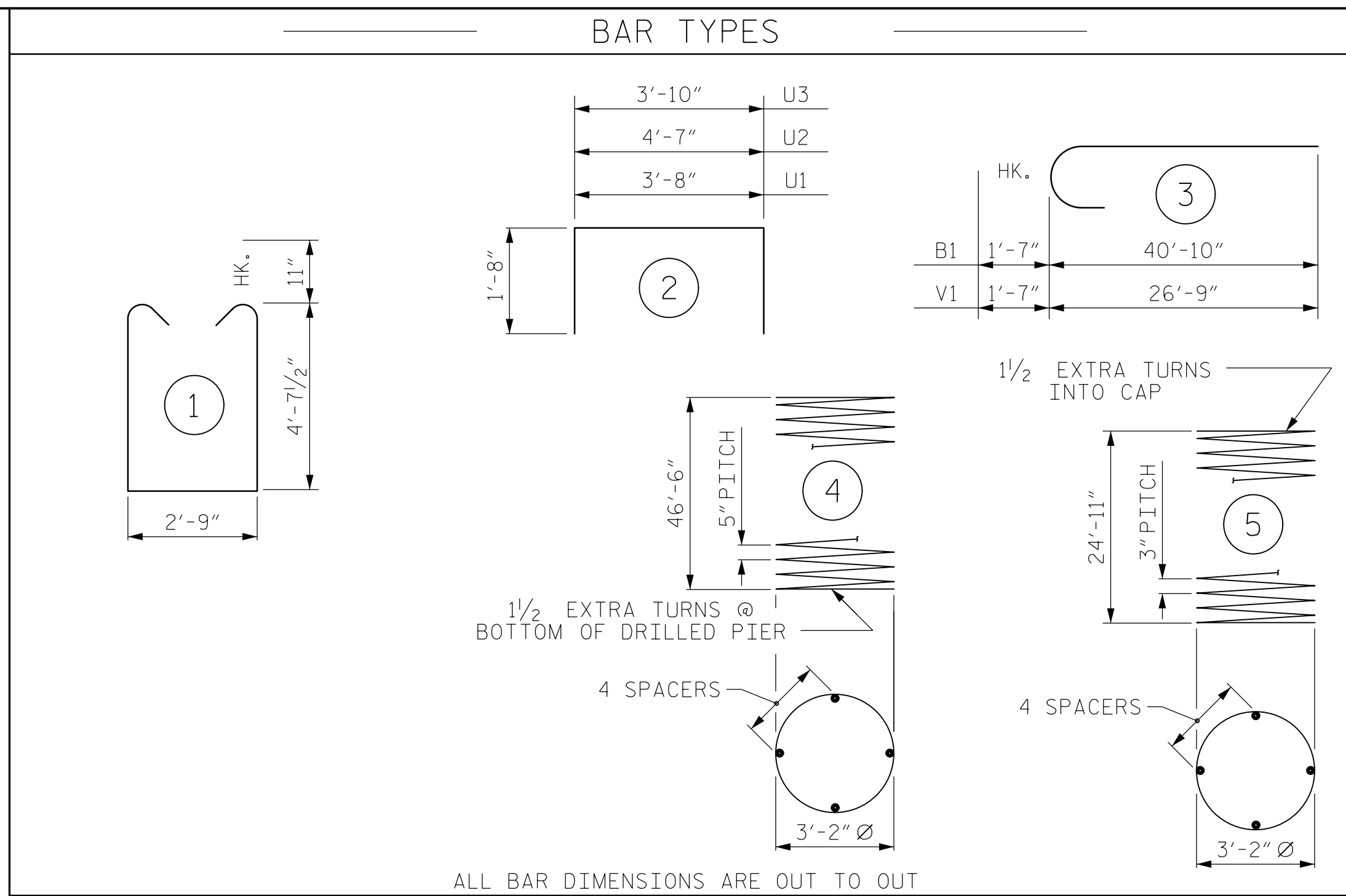
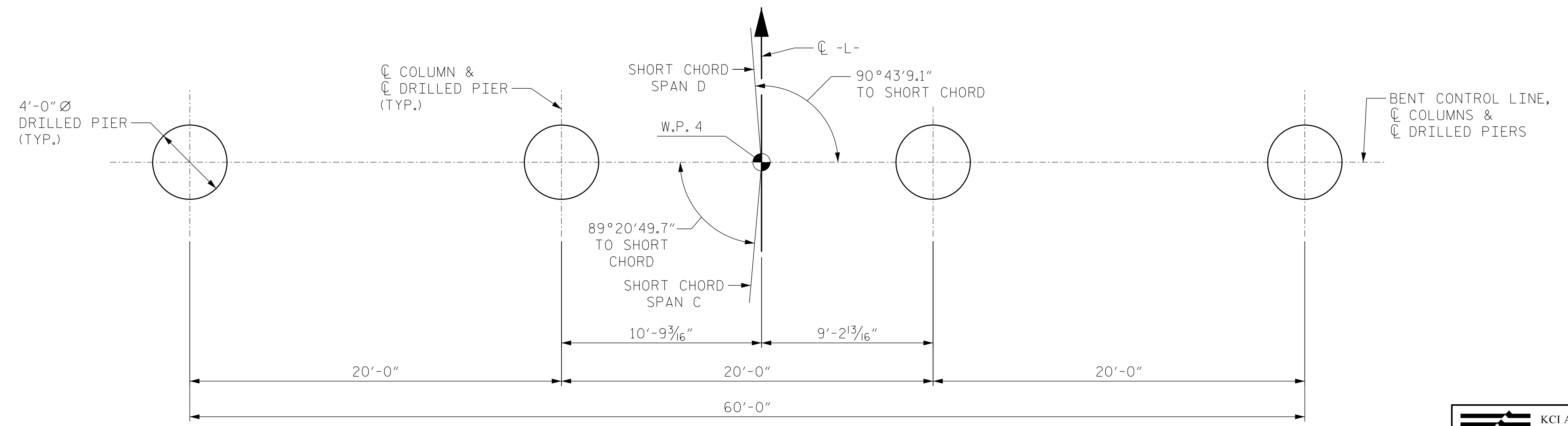
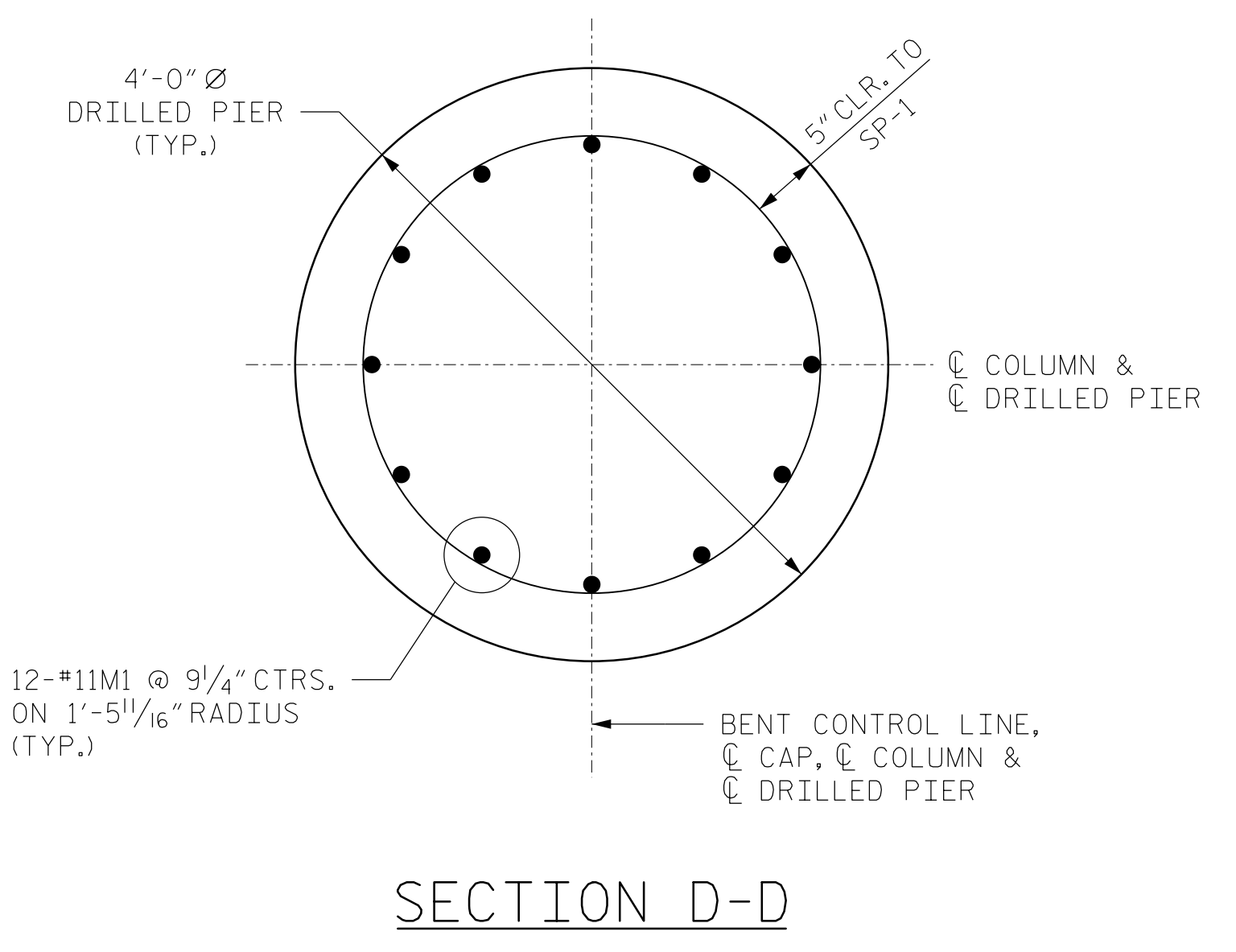
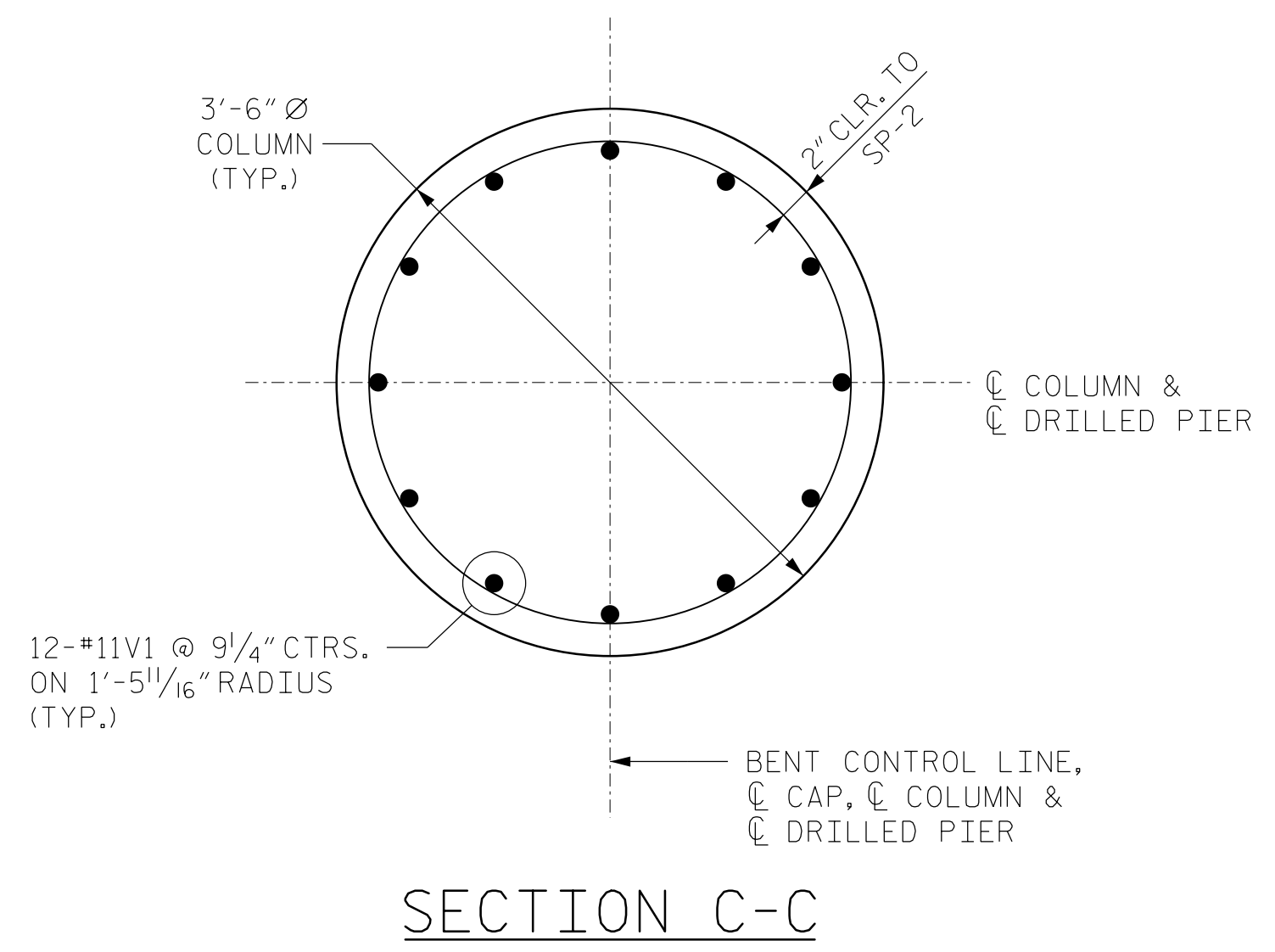


0400DEL_P30



BILL OF MATERIAL FOR ONE BENT					
BAR	NO.	SIZE	TYPE	LENGTH	WEIGHT
B1	16	#11	3	42'-5"	3,606
B2	16	#11	STR	38'-11"	3,308
B3	16	#5	STR	35'-6"	592
B4	8	#5	STR	31'-5"	262
M1	48	#11	STR	56'-10"	14,494
S1	182	#6	1	13'-10"	3,782
U1	10	#4	2	7'-0"	47
U2	8	#4	2	7'-11"	42
U3	73	#4	2	7'-2"	349
V1	48	#11	3	28'-4"	7,226
REINFORCING STEEL (FOR ONE BENT)					33,708 LBS.
SP-1	4	*	4	1126'-2"	4,698
SP-2	4	**	5	1007'-1"	2,691
SPIRAL COLUMN REINFORCING STEEL (FOR ONE BENT)					7,389 LBS.
* THE SP-1 SPIRAL REINFORCING STEEL SHALL BE W31 OR D-31 COLD DRAWN WIRE OR #5 PLAIN OR DEFORMED BAR					
** THE SP-2 SPIRAL REINFORCING STEEL SHALL BE W20 OR D-20 COLD DRAWN WIRE OR #4 PLAIN OR DEFORMED BAR					
CLASS A CONCRETE BREAKDOWN (FOR ONE BENT)					
POUR #2 (COLUMNS)					34.9 C.Y.
POUR #3 (CAP)					55.5 C.Y.
TOTAL CLASS A CONCRETE					90.4 C.Y.
DRILLED PIERS: (FOR ONE BENT)					
DRILLED PIER CONCRETE					
POUR #1 (DRILLED PIERS)					87.5 C.Y.
4'-0" Ø DRILLED PIER NOT IN SOIL					48 LIN. FT.
4'-0" Ø DRILLED PIER IN SOIL					140 LIN. FT.
CSL TUBES					776 LIN. FT.

PROJECT NO. U-5008
MECKLENBURG COUNTY
 STATION: 20+45.05 -L- P.O.T. =
14+54.24 -Y4- P.O.T.

SHEET 3 OF 3

STATE OF NORTH CAROLINA
 DEPARTMENT OF TRANSPORTATION
 RALEIGH

**BENT 3
 DETAILS**

REVISIONS					
NO.	BY:	DATE:	NO.	BY:	DATE:
1			3		
2			4		

SHEET NO. S-63
 SHEETS 78

2/18/2015 Y:\Drowings\2011 DWGS\NB11-11 Sugar Creek Rd - NCDOT\Structures\RFC\SHE3_U-5008_SD_B3-03.dgn

DJ.D
 DRAWN BY : D.L.KEENER DATE : OCT. 2014
 CHECKED BY : J.C.MEDLIN DATE : OCT. 2014

