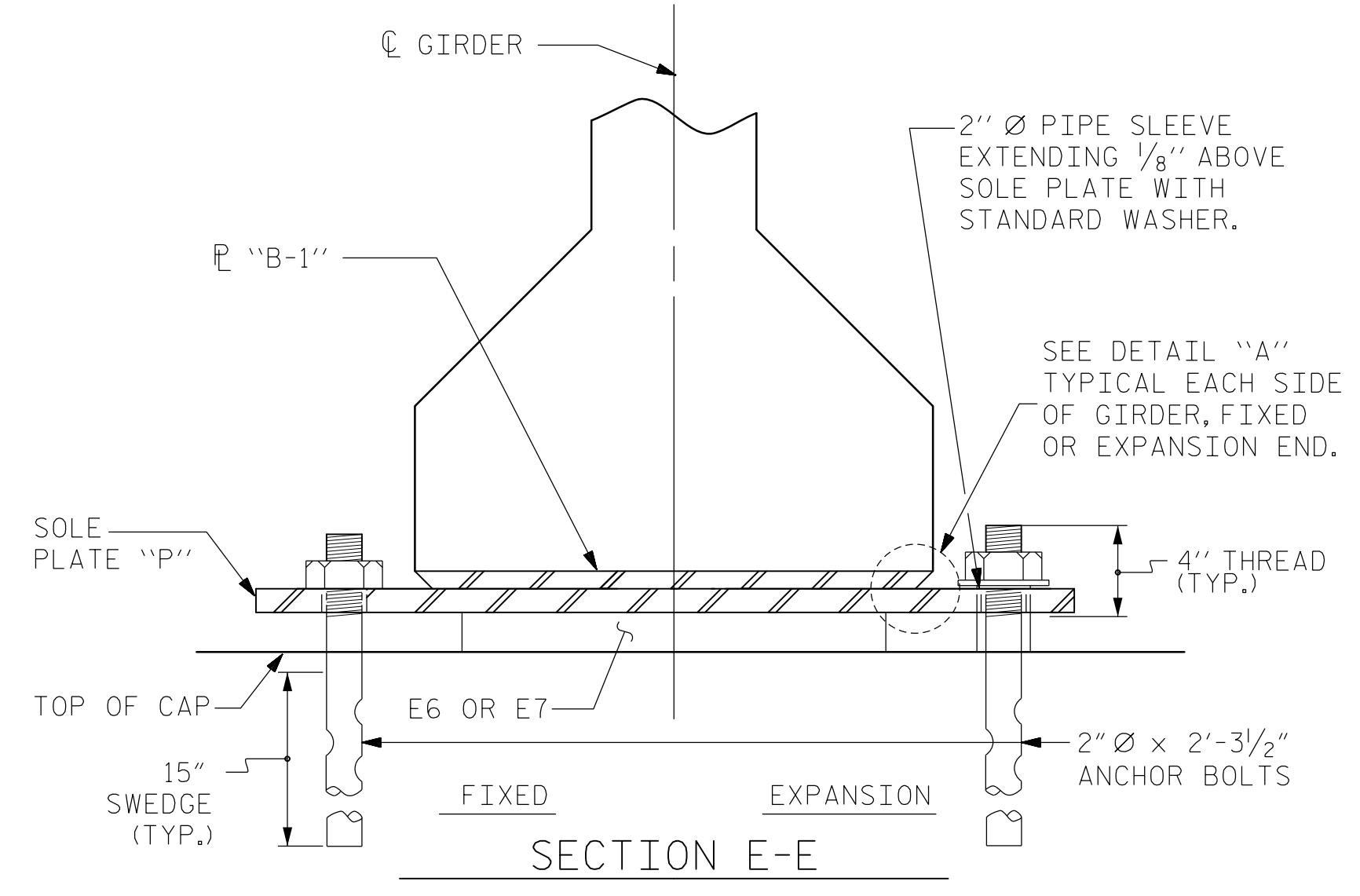
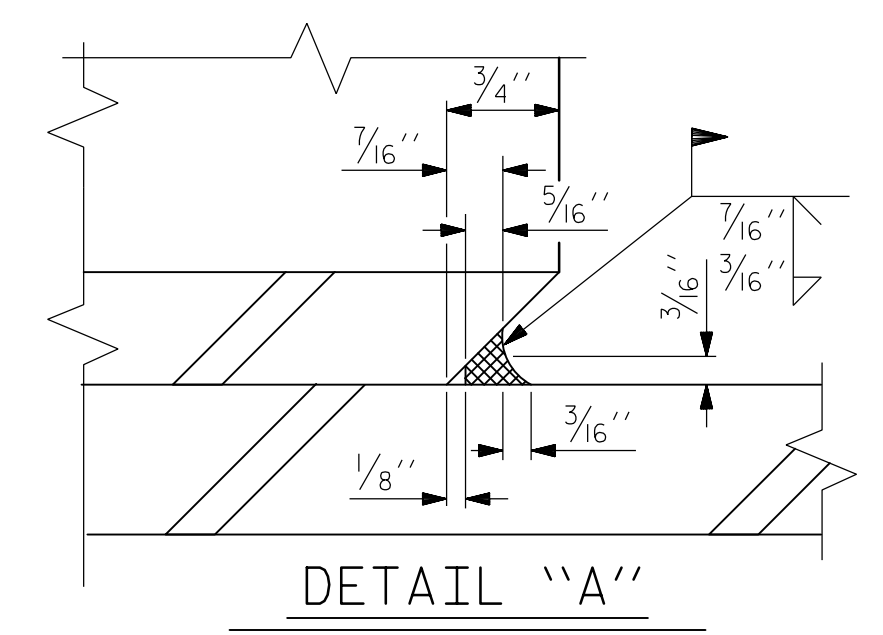


TYPICAL HALF-PLAN (SHOWING CONTINUOUS BENT) TYPICAL HALF-PLAN (SHOWING SIMPLE SPAN BENT)



SECTION E-E



DETAIL "A"

MAXIMUM ALLOWABLE SERVICE LOADS	
D.L.+L.L. (NO IMPACT)	
TYPE VII	470 k
MODIFIED TYPE VII	470 k

NOTES

AT ALL FIXED POINTS OF SUPPORT, NUTS FOR ANCHOR BOLTS ARE TO BE TIGHTENED FINGER TIGHT AND THEN BACKED OFF 1/2 TURN. THE THREAD OF THE NUT AND BOLT SHALL THEN BE BURRED WITH A SHARP POINTED TOOL.

THE 2" Ø PIPE SLEEVE SHALL BE CUT FROM SCHEDULE 40 PVC PLASTIC PIPE. THE PVC PLASTIC PIPE SHALL MEET THE REQUIREMENTS OF ASTM D1785.

STEEL SOLE PLATES, ANCHOR BOLTS, NUTS, AND WASHERS SHALL BE GALVANIZED IN ACCORDANCE WITH THE STANDARD SPECIFICATIONS.

PRIOR TO WELDING, GRIND THE GALVANIZED SURFACE OF THE PORTION OF THE EMBEDDED PLATE AND SOLE PLATE THAT ARE TO BE WELDED. AFTER WELDING, DAMAGED GALVANIZED SURFACES SHALL BE REPAIRED IN ACCORDANCE WITH THE STANDARD SPECIFICATIONS.

WHEN WELDING THE SOLE PLATE TO THE EMBEDDED PLATE IN THE GIRDER, USE TEMPERATURE INDICATING WAX PENS, OR OTHER SUITABLE MEANS, TO ENSURE THAT THE TEMPERATURE OF THE SOLE PLATE DOES NOT EXCEED 300°F. TEMPERATURES ABOVE THIS MAY DAMAGE THE ELASTOMER.

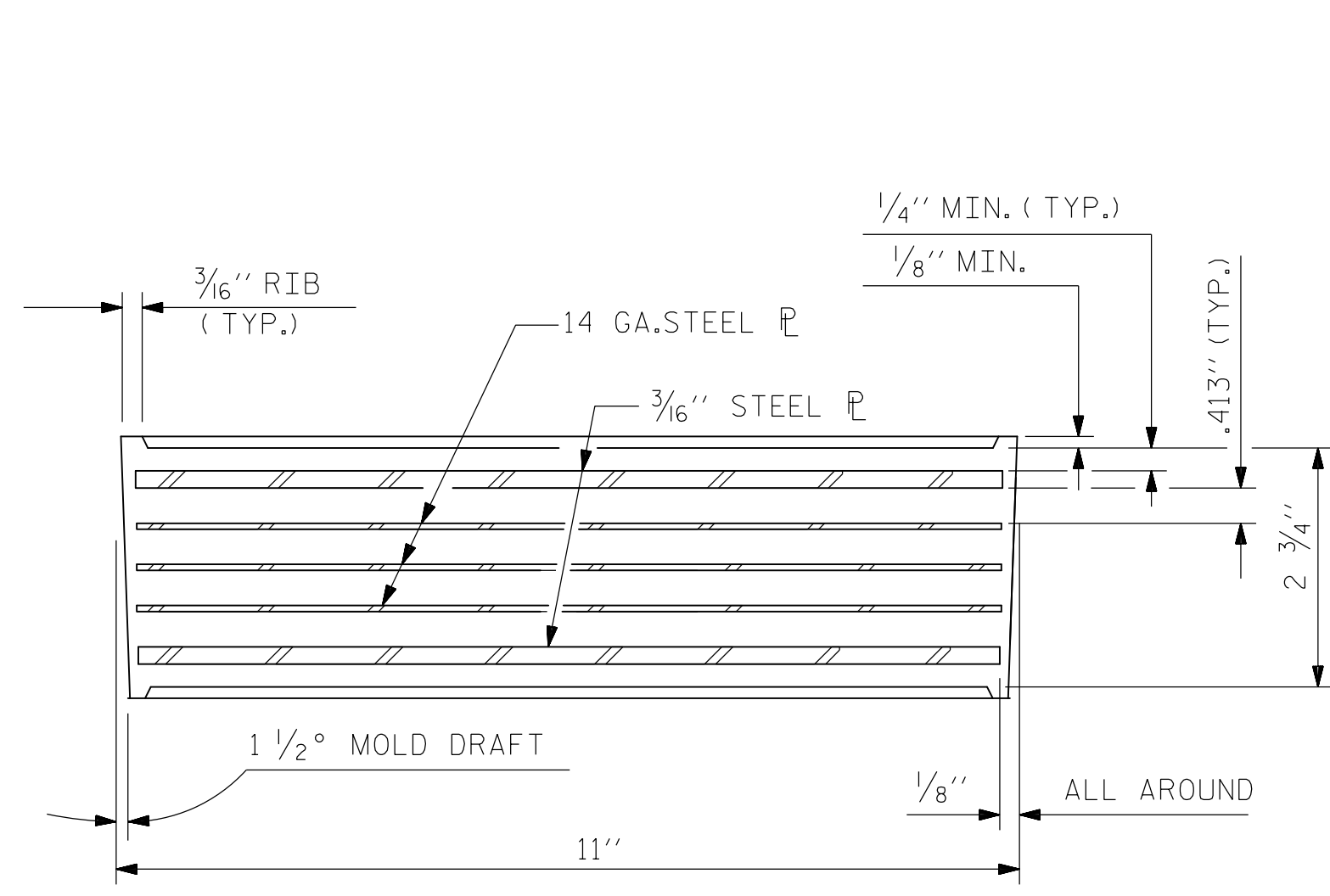
SOLE PLATE "P", BOLTS, NUTS, WASHERS, AND PIPE SLEEVE SHALL BE INCLUDED IN THE PAY ITEM FOR PRESTRESSED CONCRETE GIRDERS.

ANCHOR BOLTS SHALL MEET THE REQUIREMENTS OF ASTM A449. NUTS SHALL MEET THE REQUIREMENTS OF AASHTO M291-DH OR AASHTO M292-2H. WASHERS SHALL MEET THE REQUIREMENTS OF AASHTO M293. NO SHOP DRAWINGS ARE REQUIRED FOR ANCHOR BOLTS, NUTS AND WASHERS. SHOP INSPECTION IS REQUIRED.

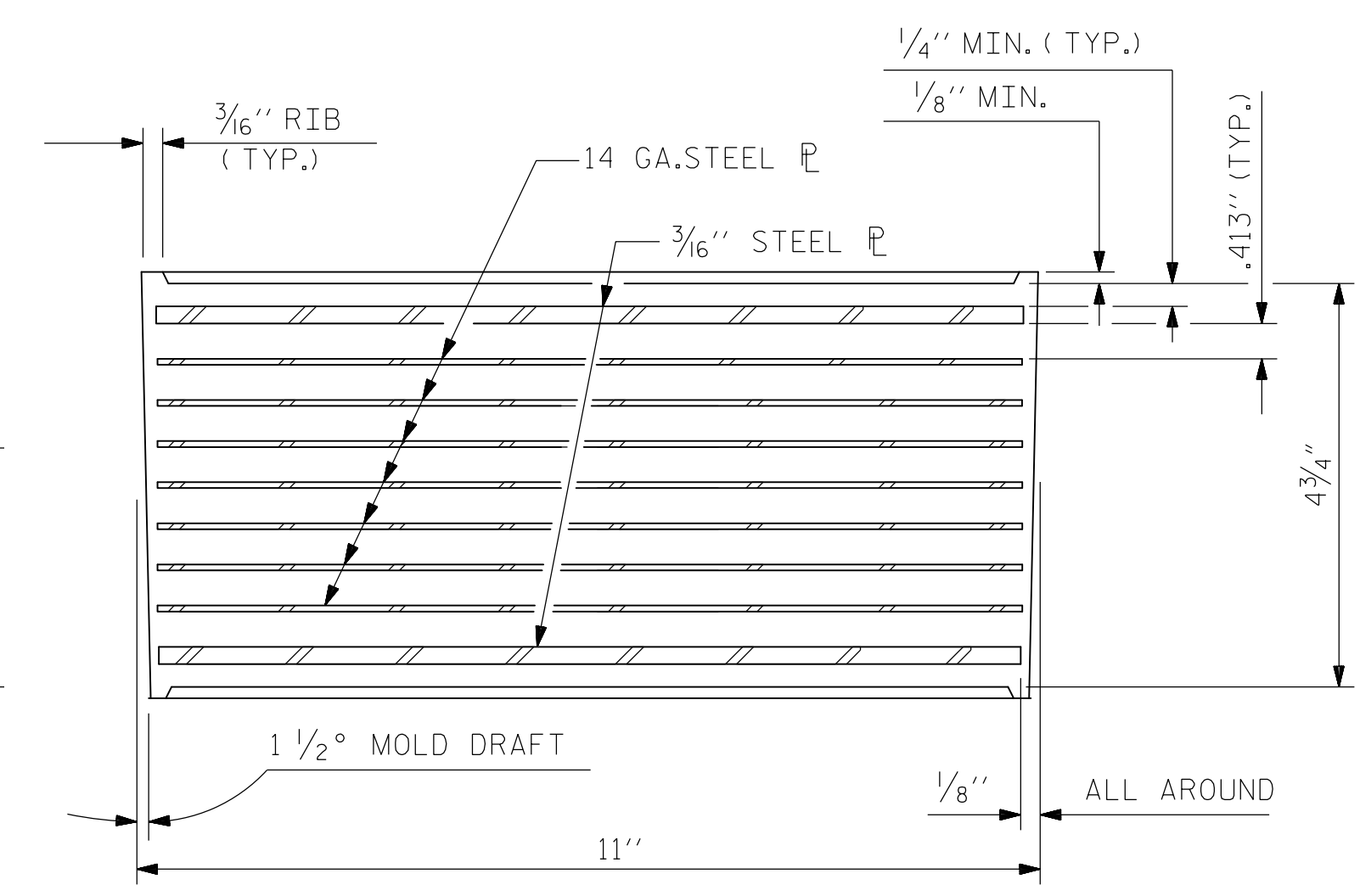
ALL SURFACES OF BEARING PLATES SHALL BE SMOOTH AND STRAIGHT.

THE ELASTOMER IN THE STEEL REINFORCED BEARINGS SHALL HAVE A SHEAR MODULUS OF 0.160 KSI, IN ACCORDANCE WITH AASHTO M251.

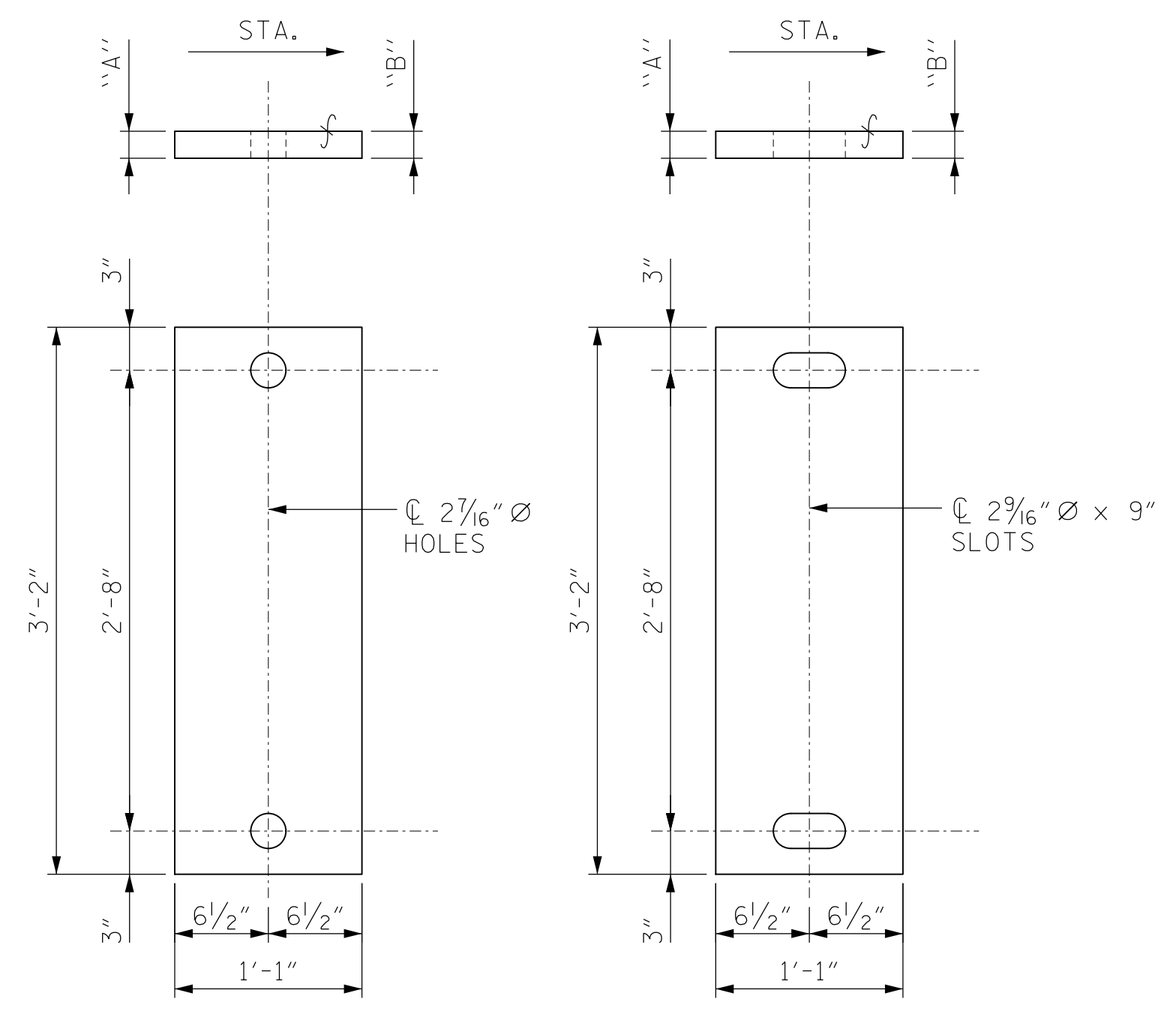
FOR STEEL REINFORCED ELASTOMERIC BEARINGS, SEE SPECIAL PROVISIONS.



TYPICAL SECTION OF ELASTOMERIC BEARINGS



TYPICAL SECTION OF ELASTOMERIC BEARINGS



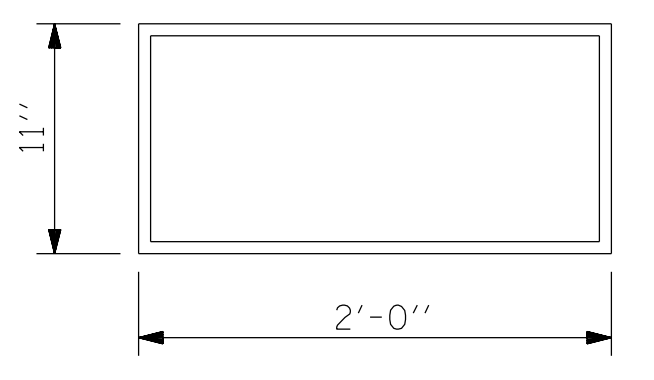
FIXED EXPANSION

SOLE PLATE DETAILS ("P")

SEE FRAMING PLAN (SHEETS 17 THRU 20) FOR LOCATION AND ORIENTATION OF SOUL PLATES

SOLE PLATE CHART				
SOLE P	FIX/EXP	QTY	"A"	"B"
P1	EXP	8	1 1/4"	1 7/8"
P2	FIX	8	1 1/4"	1 7/8"
P3	FIX	8	2 1/4"	2 1/2"
P4	FIX	8	1 1/4"	1 1/2"
P5	FIX	8	1 1/2"	1 1/2"
P6	EXP	8	1 7/8"	1 7/8"
P7	EXP	8	1 5/8"	1 1/4"
P8	FIX	8	3"	2 5/8"
P9	FIX	8	1 7/8"	1 1/4"
P10	FIX	16	3 1/2"	2 3/4"
P11	FIX	16	2"	1 1/4"
P12	EXP	8	2"	1 1/4"

PROJECT NO. U-5008  
 MECKLENBURG COUNTY  
 STATION: 20+45.05 -L- P.O.T. = 14+54.24 -Y4- P.O.T.

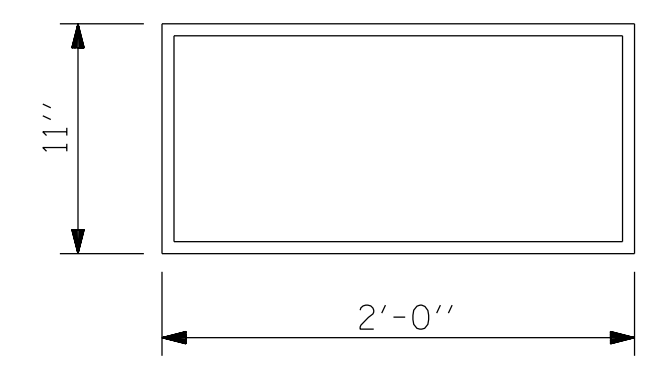


E6 (80 REQ'D)

PLAN VIEW OF ELASTOMERIC BEARING

TYPE VII

SEE FRAMING PLAN (SHEETS 17 THRU 20) FOR LOCATION OF ELASTOMERIC BEARINGS



E7 (32 REQ'D)

PLAN VIEW OF ELASTOMERIC BEARING

MODIFIED TYPE VII

SEE FRAMING PLAN (SHEETS 17 THRU 20) FOR LOCATION OF ELASTOMERIC BEARINGS

KCI ASSOCIATES OF NC, P.A.  
 9741 SOUTHERN PINE BLVD SUITE J  
 CHARLOTTE, NC 28273  
 704-499-9452  
 NC LICENSE No. C-0764

NORTH CAROLINA PROFESSIONAL ENGINEER SEAL 032954 JARED C. MEDLIN 2/19/2015

STATE OF NORTH CAROLINA DEPARTMENT OF TRANSPORTATION RALEIGH  
 ELASTOMERIC BEARING DETAILS  
 PRESTRESSED CONCRETE GIRDER SUPERSTRUCTURE

REVISIONS						SHEET NO.
NO.	BY:	DATE:	NO.	BY:	DATE:	S-30
1			3			SHEETS 78
2			4			

2/18/2015 1:00:00 PM Y:\0-rwings\2011 DWG\Structures\RFC\SH30\_U-5008\_S0\_BRG.dgn

DJD DRAWN BY: D.J.DICK DATE: OCT. 2014  
 CHECKED BY: J.C.MEDLIN DATE: OCT. 2014