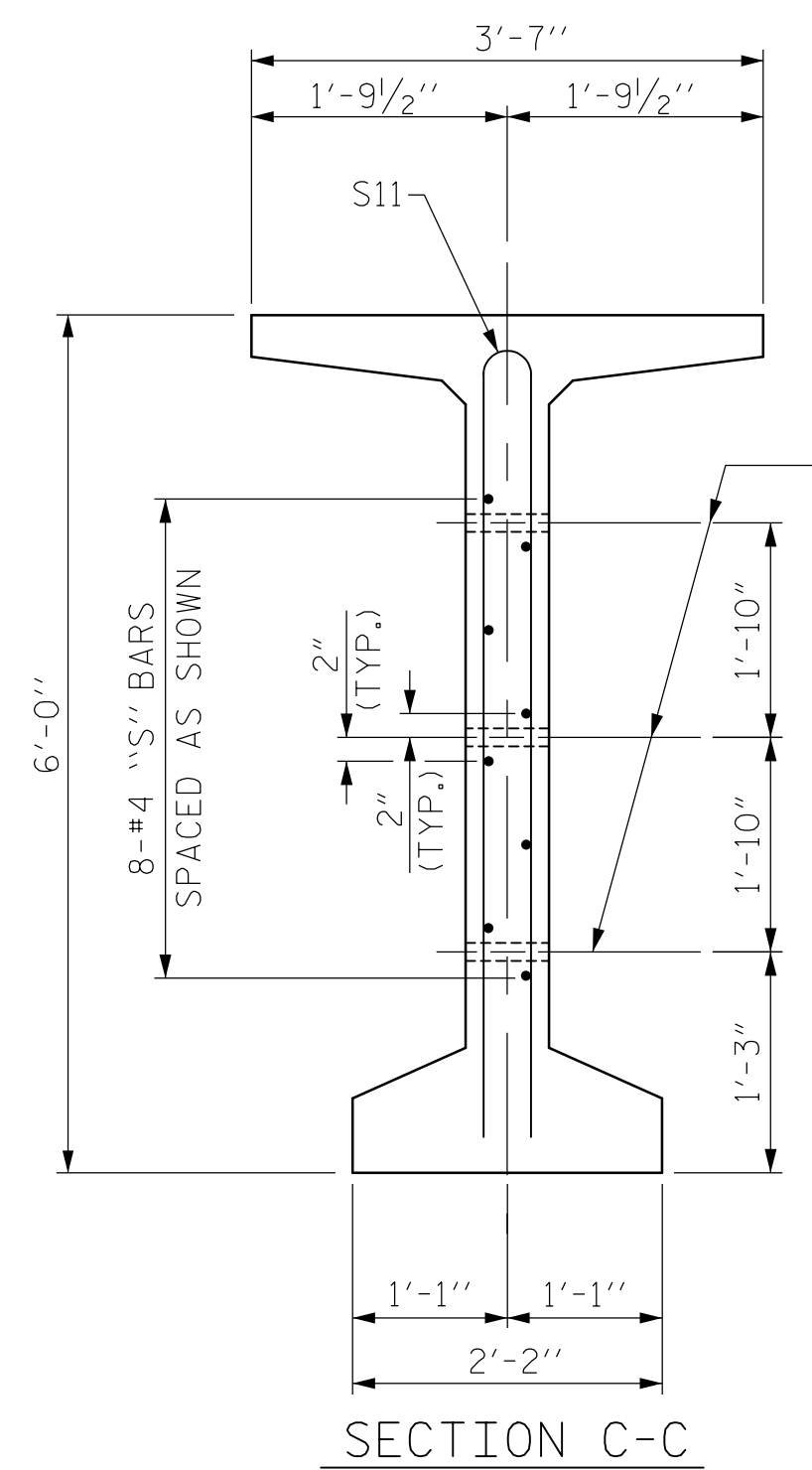


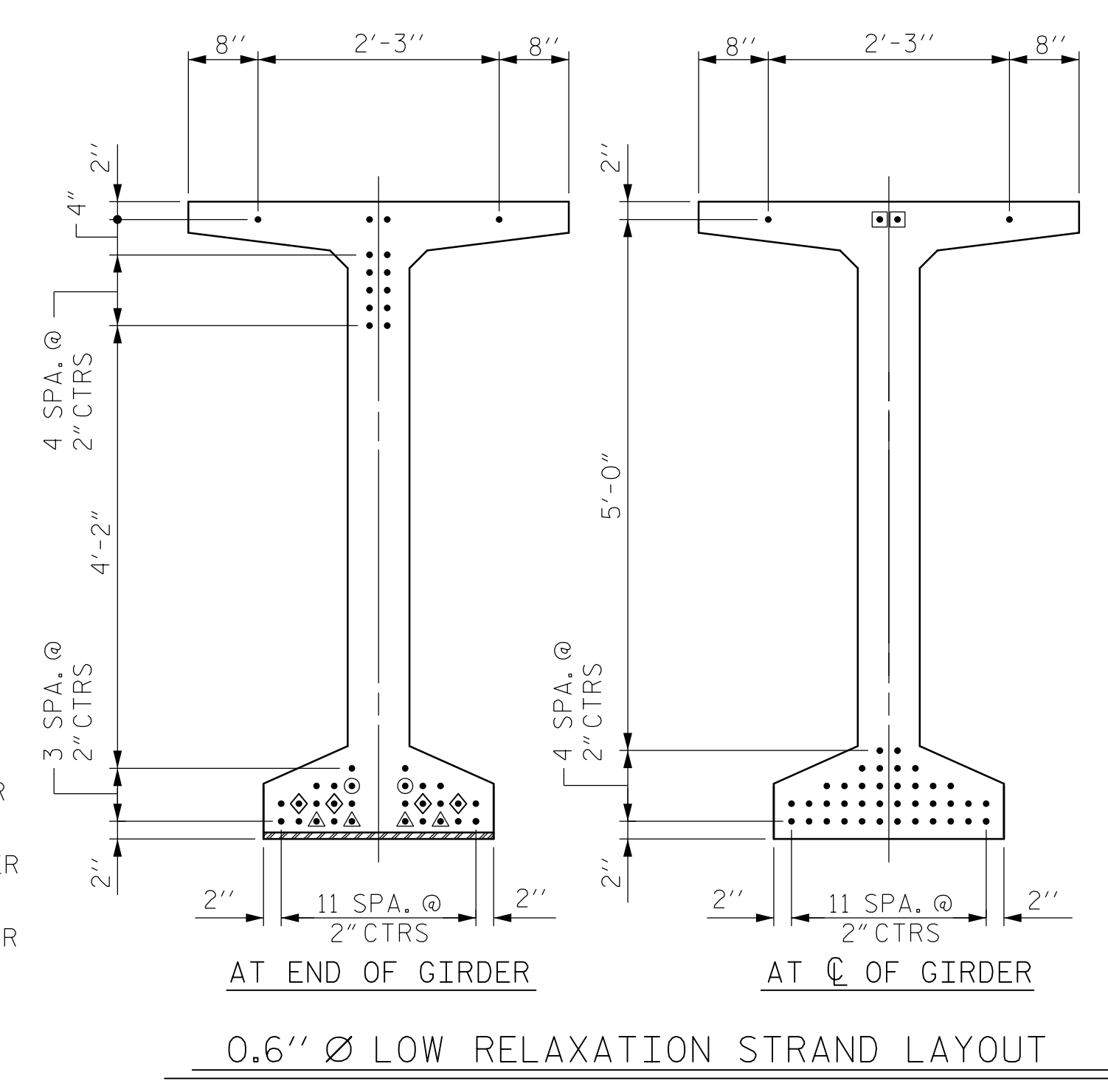
\* FOR S7 BARS. SEE  
DETAIL "C" OF  
PRESTRESSED  
CONCRETE GIRDER  
CONTINUOUS FOR LIVE  
LOAD DETAILS SHEET



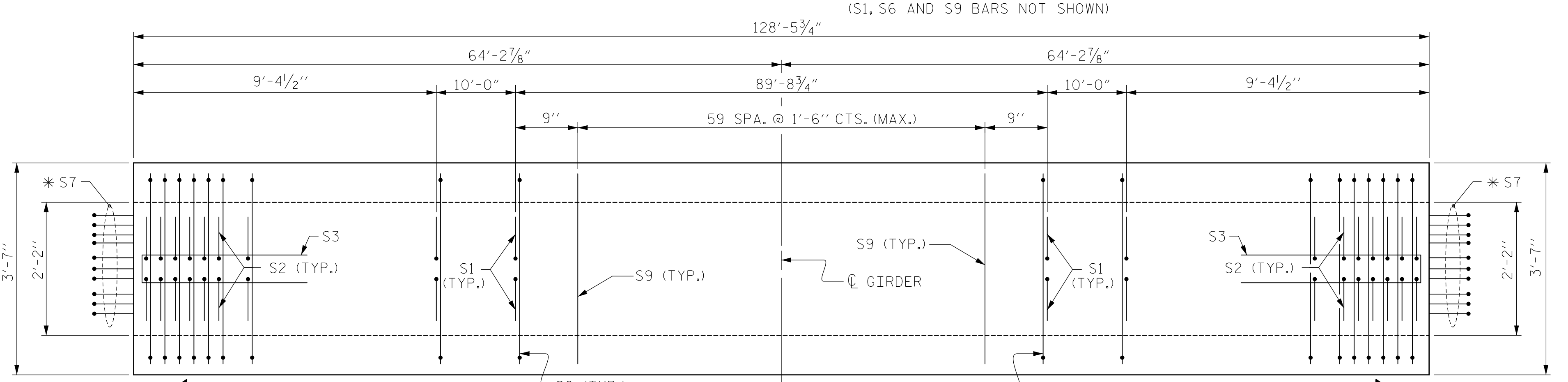
1/2" Ø FORMED  
HOLE. SEE ELEVATION  
FOR LOCATION.

DEBONDING LEGEND

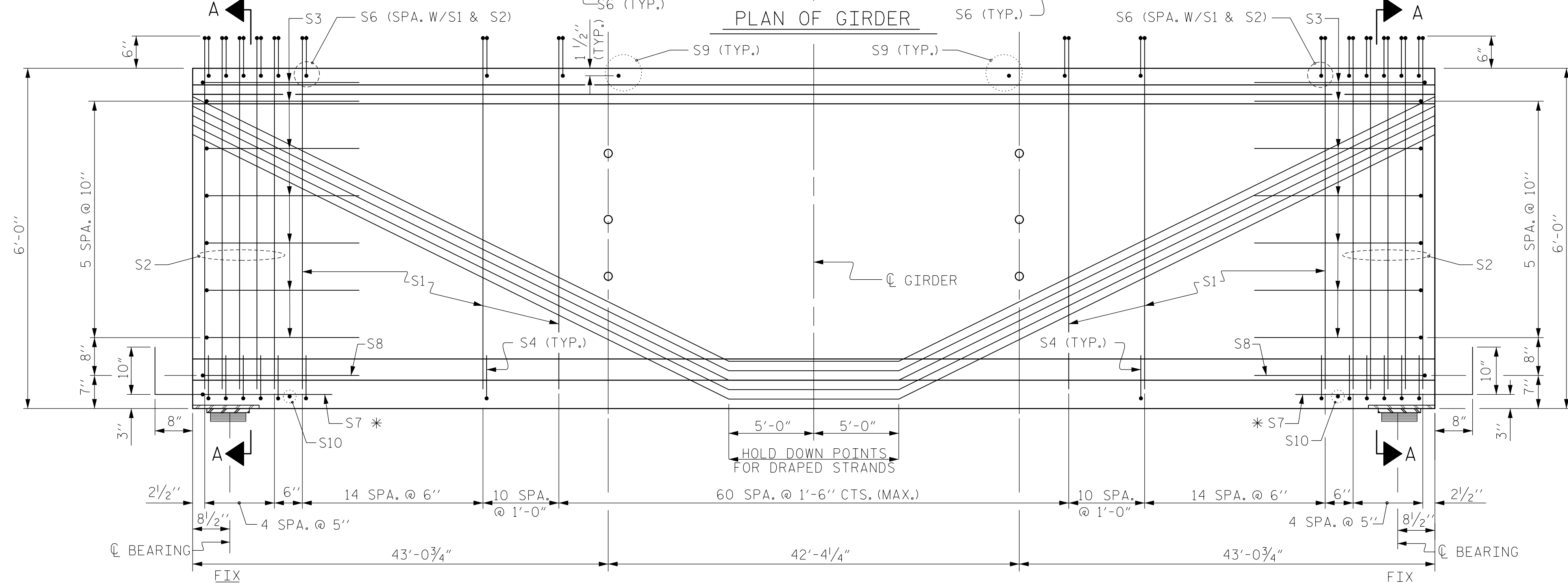
- FULLY BONDED STRANDS
- STRANDS DEBONDED FOR 8'-0" FROM END OF GIRDER
- ◇ STRANDS DEBONDED FOR 10'-0" FROM END OF GIRDER
- △ STRANDS DEBONDED FOR 12'-0" FROM END OF GIRDER
- ◻ STRANDS DEBONDED FOR 40'-0" IN EA. DIRECTION ABOUT C OF GIRDER (80'-0" TOTAL)



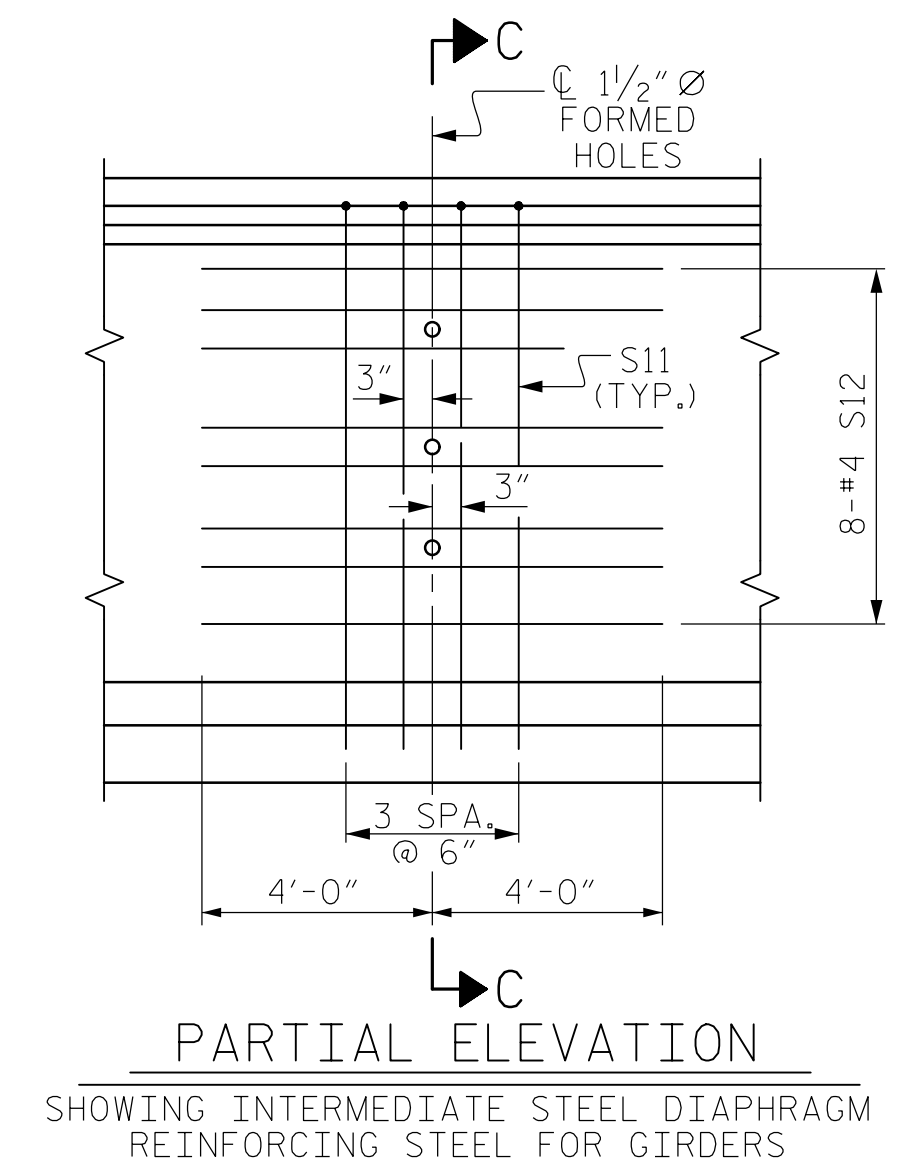
AT END OF GIRDER AT C OF GIRDER  
0.6" Ø LOW RELAXATION STRAND LAYOUT



PLAN OF GIRDER



ELEVATION OF GIRDER



PARTIAL ELEVATION  
SHOWING INTERMEDIATE STEEL DIAPHRAGM  
REINFORCING STEEL FOR GIRDERS

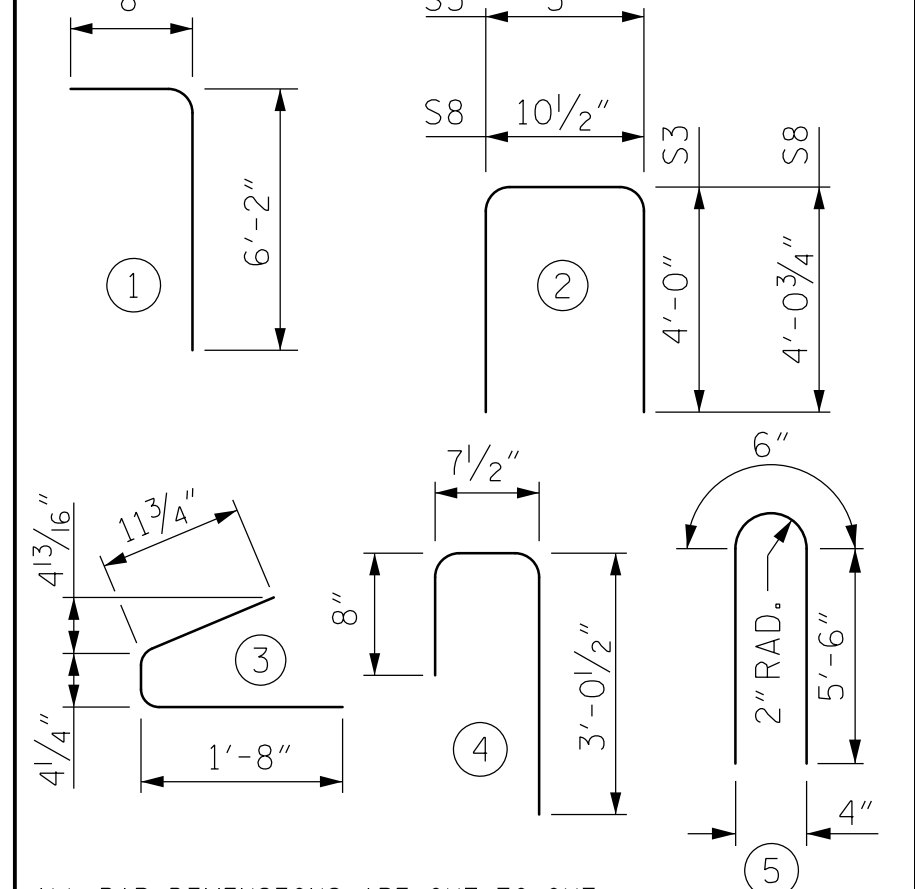
0.6" Ø L. R. GRADE 270 STRANDS		
AREA (SQUARE INCHES)	ULTIMATE STRENGTH (LBS. PER STRAND)	APPLIED PRESTRESS (LBS. PER STRAND)
0.217	58,600	43,950

REINFORCING STEEL FOR ONE GDR

BAR NUMBER	SIZE	TYPE	LENGTH	WEIGHT
S1	218	#5	1 6'-10"	1,554
S2	20	#6	1 6'-10"	205
S3	14	#4	2 8'-5"	79
S4	80	#4	3 3'-0"	160
S6	238	#5	4 4'-4"	1,076
* S7	20	#5	STR 3'-8"	76
S8	2	#5	2 9'-0"	19
S9	60	#5	STR 3'-3"	203
S10	2	#3	STR 1'-10"	1
S11	8	#5	5 11'-6"	96
S12	16	#4	STR 8'-0"	86

\* NOTE: S7 BARS SHALL BE BENT BEFORE SHIPMENT. HEAT BENDING SHALL NOT BE ALLOWED.

BAR TYPES



ALL BAR DIMENSIONS ARE OUT-TO-OUT

QUANTITIES FOR ONE GIRDER

GIRDER	REINFORCING STEEL	8,000 PSI CONCRETE	0.6" Ø L.R. STRANDS
	LB.	C.Y.	No.
GIRDER	3,555	27.5	42

GIRDERS REQUIRED

NUMBER	LENGTH	TOTAL LENGTH
8	128'-5 3/4"	1027'-10"

PROJECT NO. U-5008  
MECKLENBURG COUNTY  
STATION: 20+45.05 -L- P.O.T. =  
14+54.24 -Y4- P.O.T.

STATE OF NORTH CAROLINA  
DEPARTMENT OF TRANSPORTATION  
RALEIGH

72" PRESTRESSED CONCRETE  
MODIFIED BULB TEE  
CONTINUOUS FOR LIVE LOAD  
SPAN B

REVISIONS						SHEET NO.	
NO.	BY:	DATE:	NO.	BY:	DATE:	S-22	
1			3			SHEETS	
2			4			78	

2/18/2015 1:10:07 PM Y:\Drawings\2011\DWGS\B11-11\Sugar Creek Rd - NCDOT\Structures\RFC\SH22-U-5008\_SD\_PCC-1\_Span B.dgn

DRAWN BY: M.S.BURGESS DATE: OCT. 2014  
CHECKED BY: J.C.MEDLIN DATE: OCT. 2014

