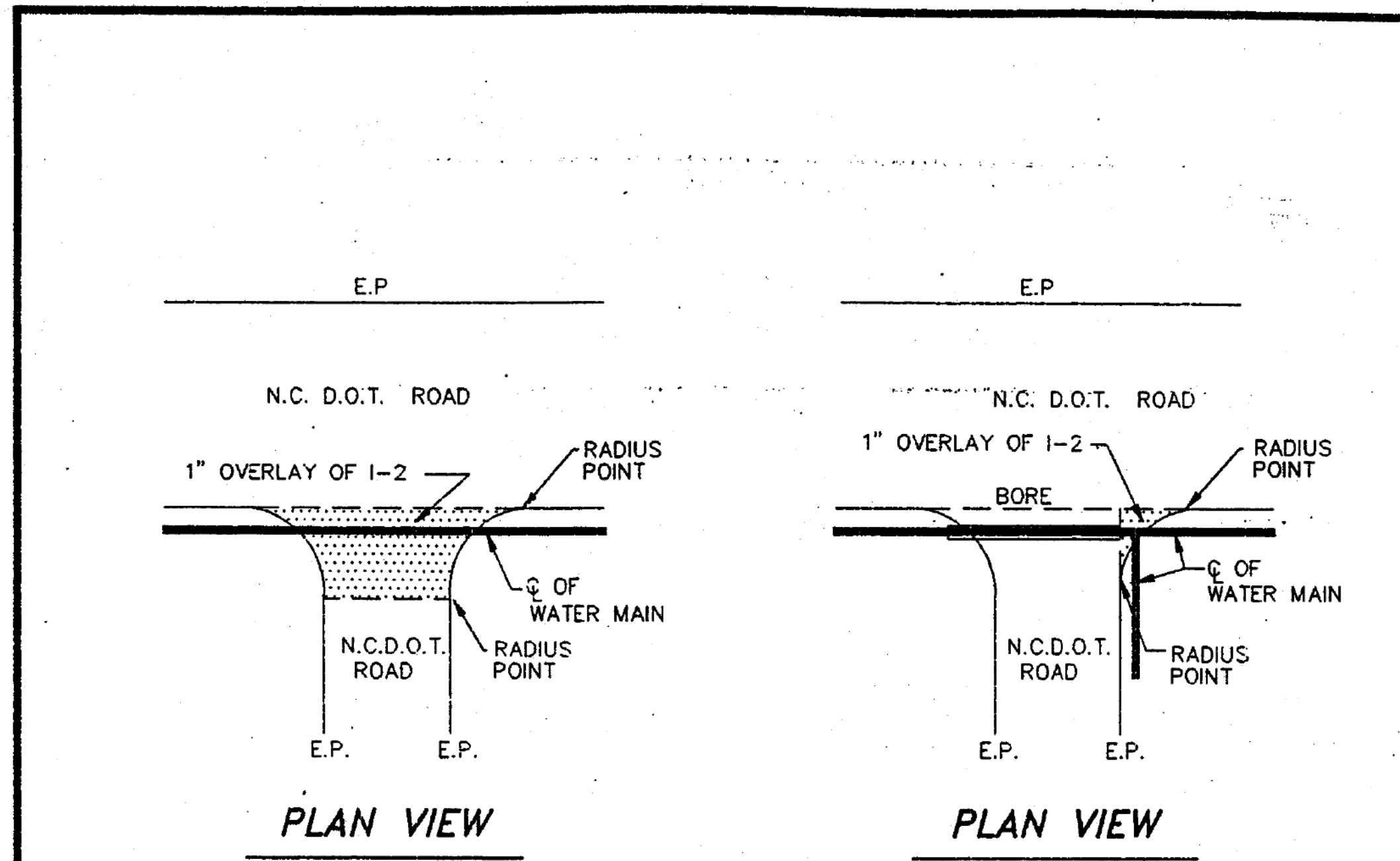


# CLTWater STANDARD DETAILS

0400DEL\_P30



**NOTES:**

1. ALL SHORING WILL BE ACCORDING TO OSHA TRENCHING STANDARDS PART 1926 SUBPART P.
2. PAVEMENT OVERLAY IS IN ADDITION TO PAVEMENT REPAIR PER STANDARD DETAIL 9.
3. FEATHER OVERLAY SMOOTHLY INTO EXISTING PAVEMENT.
4. THIS DETAIL APPLIES TO N.C. DEPARTMENT OF TRANSPORTATION ROADS ONLY, UNLESS OTHERWISE DIRECTED BY THE ENGINEER.

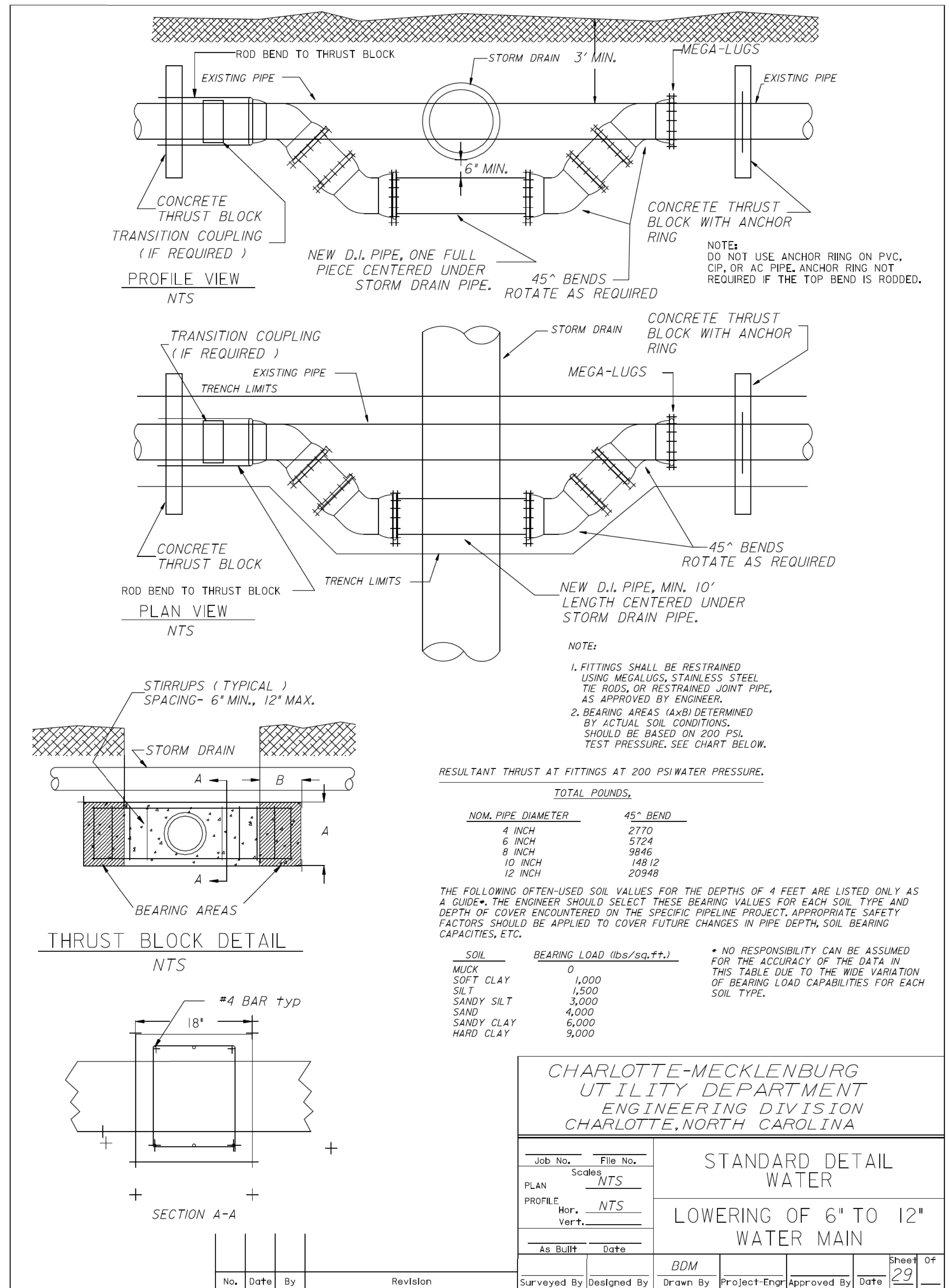
CHARLOTTE-MECKLENBURG  
UTILITY DEPARTMENT  
ENGINEERING DIVISION  
CHARLOTTE, NORTH CAROLINA

Job No.	File No.	Scale <b>NTS</b>	<b>STANDARD DETAIL WATER</b>
PLAN			
PROFILE			<b>1-2 SURFACE COURSE OVERLAY</b>
As Built	Date		
Surveyed By	Designed By	Drawn By	Project-Eng
		Approved By	Date

July 27, 1995

XIV - 61

Water Specifications/Details (SD)



**NOTE: USE THIS DETAIL ALSO AT LOCATIONS WHERE EXISTING 6" TO 12" WATER LINES ARE RELOCATED.**

2/6/2015 W:\Transportation\Trl\036.00 (U-5008)\U\H\H\ees\permi\280\_027\_U5008.dgn

REV: 2/1/2012