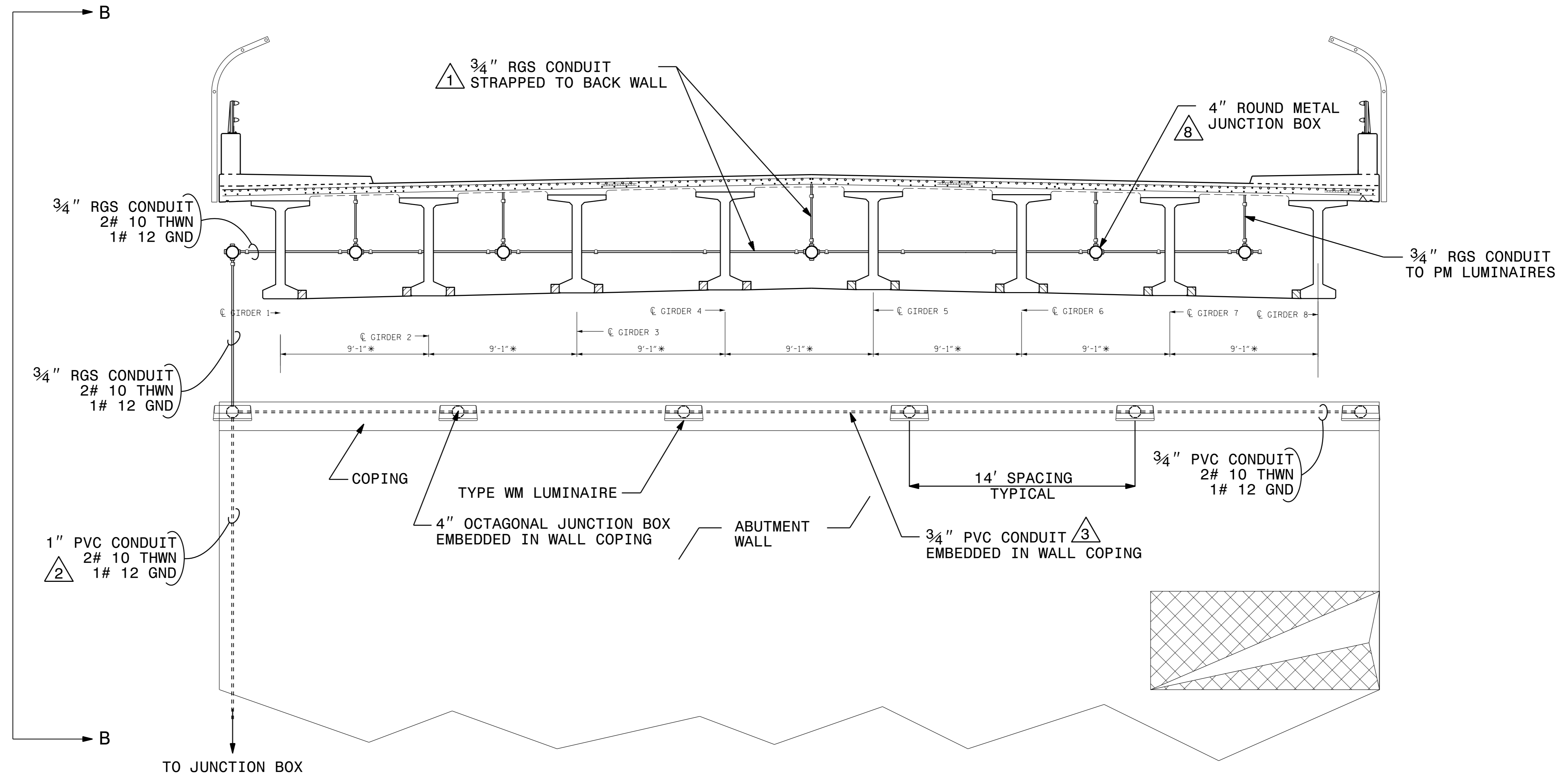


USE FOR LIGHTING CONSTRUCTION ONLY

DCM
0400DEL_P30

PROJECT REFERENCE NO. U-5008	SHEET NO. E5
NTS	
	Documented by <i>Paul Chan</i> 2/3/2015 <small>PROF. ENGINEER</small>



SEE SHEET E3
FOR DELTA NOTES

2			
1			
Rev.	Date	Description	Approved
NORTH CAROLINA DEPARTMENT OF TRANSPORTATION ROADWAY DESIGN LIGHTING/ELECTRICAL SECTION			
LIGHTING DETAILS SUGAR CREEK ROAD UNDERPASS LIGHTING AT WALL 1 (RALEIGH STREET) SHEET 1 OF 2 MECKLENBURG COUNTY			
Drawn By:	Approved By:	Dwg No.:	
RGH	PC		