

0400DEL\_P30

PARCEL #	PROPERTY OWNER'S NAME	DEED BOOK #
20	ARK PROMOTIONS, INC C/O ARK VENTURES, INC	DB 23915 PG 719
21	HELEN DORTON, LLC	DB 10482 PG 789
22	STAR MOUNTAIN PROPERTIES	DB 20685 PG 769
23	AJP MECKLENBURG, LLC	DB 24519 PG 504 DB 25107 PG 028
24	VIET-MY CORPORATION	DB 16755 PG 902 DB 16755 PG 906
25	VASILIOS K. BELIGRINIS, et al	DB 5547 PG 573

PARCEL #	PROPERTY OWNER'S NAME	DEED BOOK #
26	METROMONT PRESTRESS COMPANY	DB 9426 PG 410
27	ECONOMY TRANSPORT GROUP, INC	DB 16914 PG 809 DB 14829 PG 237
28	JOAL CORP	DB 7059 PG 202
29	CONCRETE SUPPLY COMPANY	DB 8485 PG 827

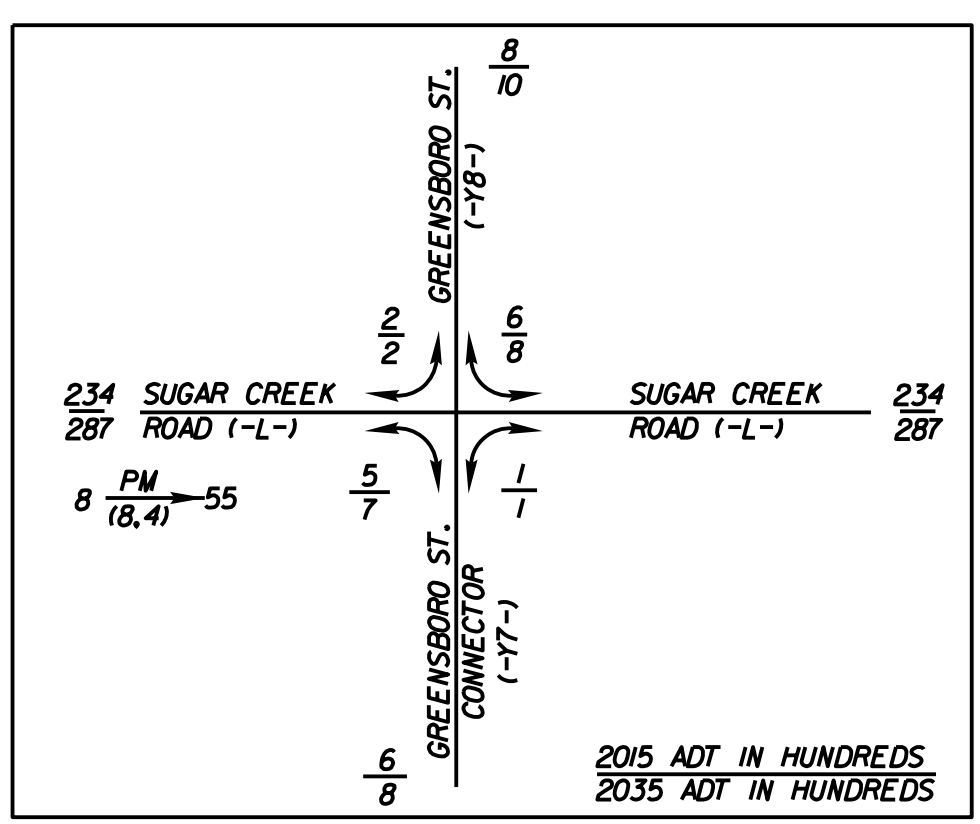
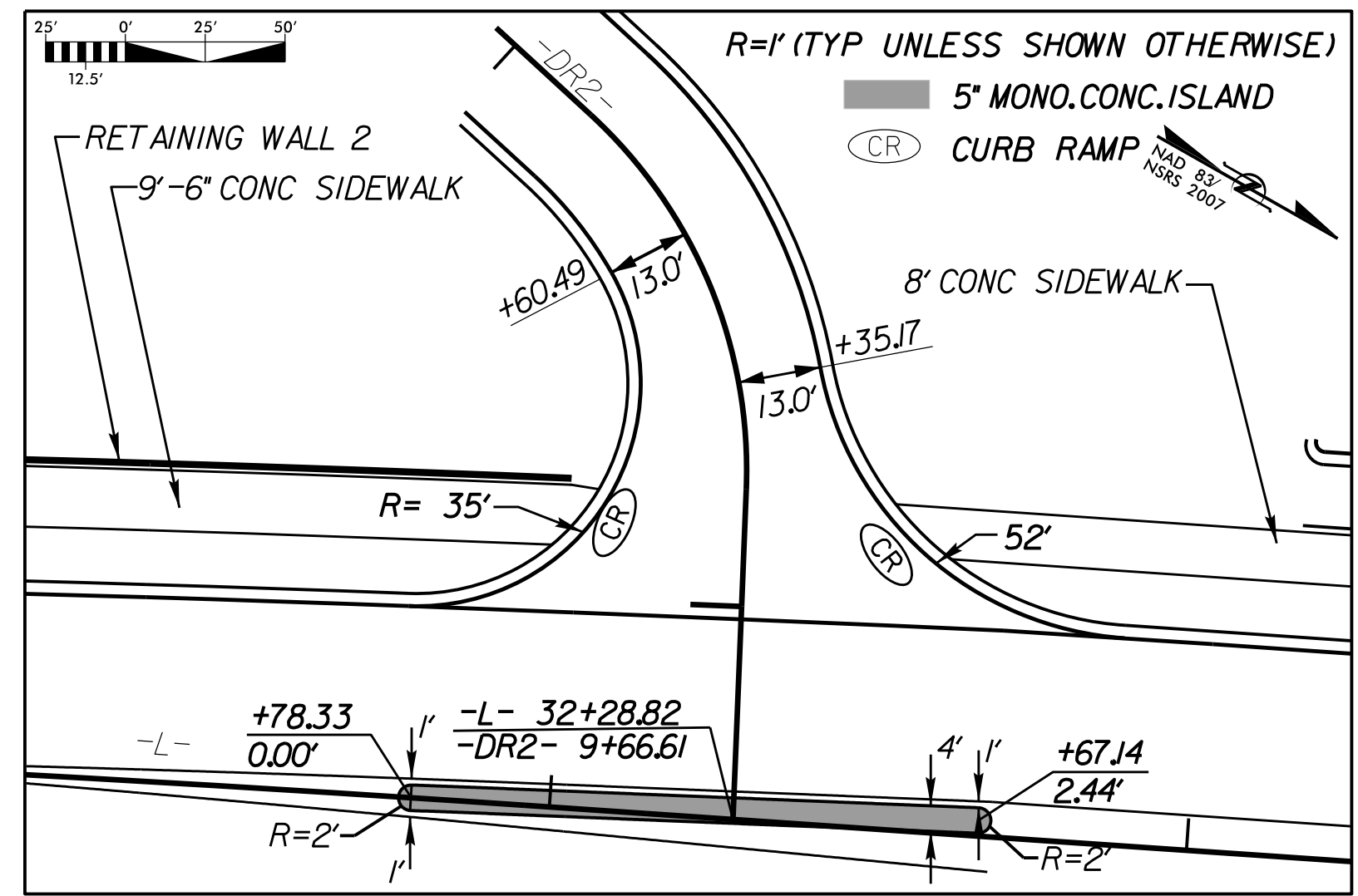
**SEPI**  
ENGINEERING & CONSTRUCTION

1025 Wade Avenue  
Raleigh, NC 27605  
Tel: 919-789-9977  
Fax: 919-789-9591  
License: C-2197

PROJECT REFERENCE NO. <b>U-5008</b>	SHEET NO. <b>6</b>
R/W SHEET NO.	HYDRAULICS ENGINEER
ROADWAY DESIGN ENGINEER 3/5/2015	3/5/2015

Design: Steven L. Thomas  
Seal: 014978

Design: Steven Bondar  
Seal: 012786



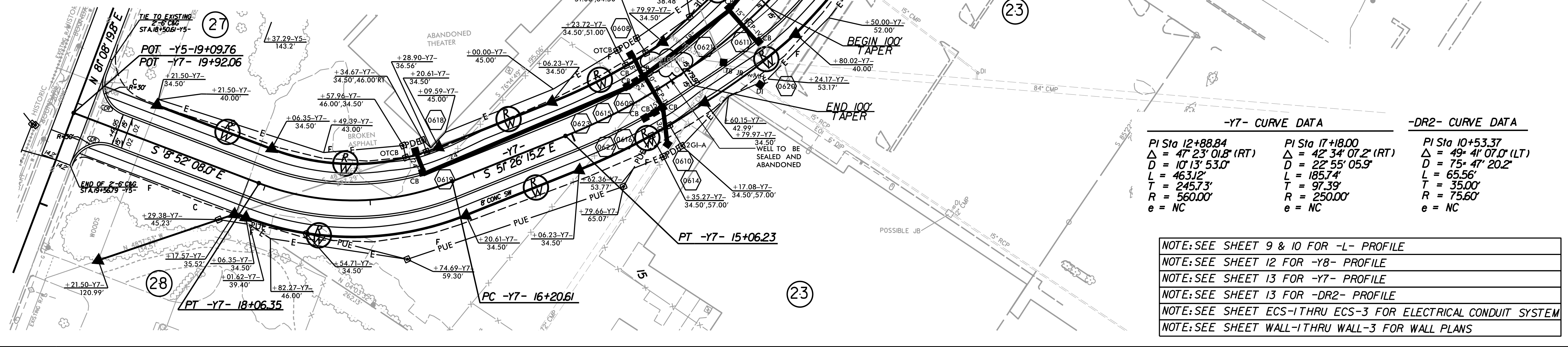
**PUE CALLOUTS**

POINT STA.	OFFSET	LINE
1	+45.64	83.55' L
2	+65.55	69.03' L
3	+65.70	60.98' L

**-DR2- BEARINGS**

1	S 13° 00' 31.2" W
2	S 62° 41' 38.2" E

MATCHLINE -L- STA 31+50 SEE SHEET 5



REVISIONS

DATE: 3/5/2015  
TIME: 10:00 AM  
BY: [Signature]