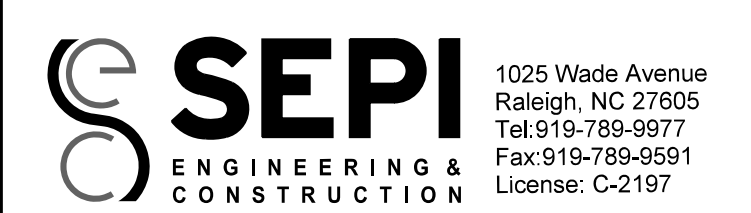
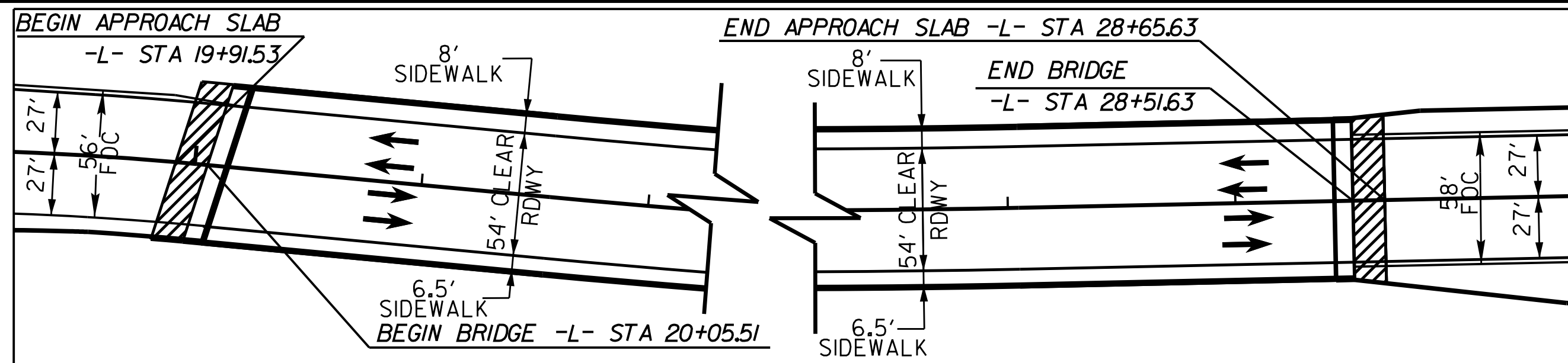


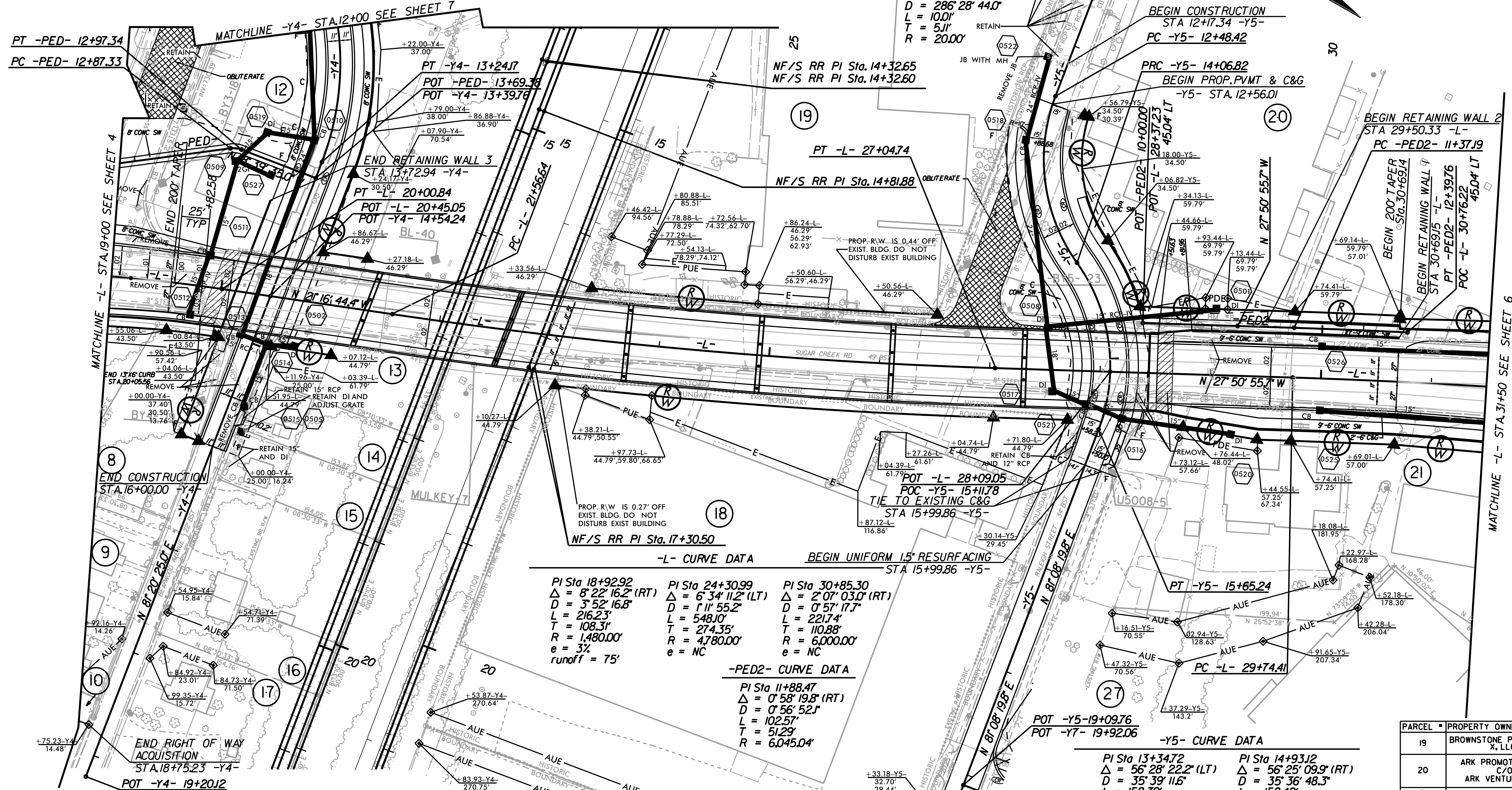
0400DEL_P30



PROJECT REFERENCE NO. U-5008	SHEET NO. 5
R/W SHEET NO. 3/5/2015	HYDRAULICS ENGINEER 3/5/2015
ROADWAY DESIGN ENGINEER STEVEN L. THOMAS	SEAL 014978
	SEAL 012786
	STEVEN M. BONDOR



Sketch showing Dimensions of Pavement and Shoulder in Relation to Proposed Bridge Width



-PED- CURVE DATA
 PI Sta 12+92.44
 $\Delta = 28^\circ 39' 49.7''$ (RT)
 $D = 286' 28'' 44.0''$
 $L = 100.0'$
 $T = 51.1'$
 $R = 200.0'$

-L- CURVE DATA
 PI Sta 18+92.92
 $\Delta = 8^\circ 22' 16.2''$ (RT)
 $D = 3^\circ 52' 16.8''$
 $L = 216.23'$
 $T = 108.31'$
 $R = 1,480.00'$
 $e = 3\%$
 $runoff = 75'$

-PED2- CURVE DATA
 PI Sta 11+88.47
 $\Delta = 0^\circ 58' 19.8''$ (RT)
 $D = 0^\circ 56' 52.1''$
 $L = 102.57'$
 $T = 51.29'$
 $R = 6,045.04'$

-Y5- CURVE DATA
 PI Sta 13+34.72
 $\Delta = 56^\circ 28' 22.2''$ (LT)
 $D = 35^\circ 39' 11.6''$
 $L = 158.39'$
 $T = 86.30'$
 $R = 160.70'$
 $e = NC$

-Y4- CURVE DATA
 PI Sta 11+94.56
 $\Delta = 69^\circ 18' 55.3''$ (RT)
 $D = 22^\circ 55' 05.9''$
 $L = 302.45'$
 $T = 172.84'$
 $R = 250.00'$
 $e = NC$

PARCEL #	PROPERTY OWNER'S NAME	DEED BOOK #
8	HUEY M ROWE-ANDERSON	DB 14636 PG 237 PB 5 PG 414
9	LIGHT RAIL PROPERTIES, LLC	DB 11653 PG 043 DB 12463 PG 191 DB 11954 PG 501 MB 5 PG 414
10	J. L. SIDES PATRICIA S. PROPST	DB 23107 PG 405
12	CHARLOTTE & NICOLETTE, INC	DB 5547 PG 953 PB 5 PG 414
13	AOA LEASING COMPANY	DB 5547 PG 953 PB 5 PG 414

PARCEL #	PROPERTY OWNER'S NAME	DEED BOOK #
14	LIGHT RAIL PROPERTIES, LLC	DB 10248 PG 855 MB 5 PG 414
15	CR INVESTMENTS, LLC	DB 6996 PG 330 MB 5 PG 414
16	M. C. WALLACE DOROTHY C. WALLACE	DB 2220 PG 262 MB 5 PG 414
17	ANDREW KLENK	DB 27884 PG 221 MB 5 PG 414
18	WAREHOUSE SOLUTIONS OF CHARLOTTE, LLC	DB 10766 PG 777

PARCEL #	PROPERTY OWNER'S NAME	DEED BOOK #
19	BROWNSTONE PROPERTIES X, LLC	DB 9951 PG 185
20	ARK PROMOTIONS, INC C/O ARK VENTURES, INC	DB 23195 PG 719
21	HELEN DORTON, LLC	DB 10482 PG 789
27	ECONOMY TRANSPORT GROUP, INC	DB 16914 PG 809 DB 14829 PG 237
42	CONTECH CONSTRUCTION PRODUCTS, INC	DB 8531 PG 814

NOTE: SEE SHEET 9 FOR -L- PROFILE
 NOTE: SEE SHEET 11 FOR -Y4- PROFILE
 NOTE: SEE SHEET 12 FOR -Y5-, -PED- & -PED2- PROFILE
 NOTE: SEE SHEET 5-I THRU 5-T8 FOR STRUCTURE PLANS
 NOTE: SEE SHEET ECS-I THRU ECS-3 FOR ELECTRICAL CONDUIT PLANS

REVISIONS

MATCHLINE -L- STA. 31+50 SEE SHEET 6

MATCHLINE -L- STA. 19+00 SEE SHEET 4

MATCHLINE -Y4- STA. 12+00 SEE SHEET 7