

THE PLAZA AND EASTWAY DRIVE INTERSECTION AFTER DETOUR IS REMOVED

SEPI
ENGINEERING &
CONSTRUCTION

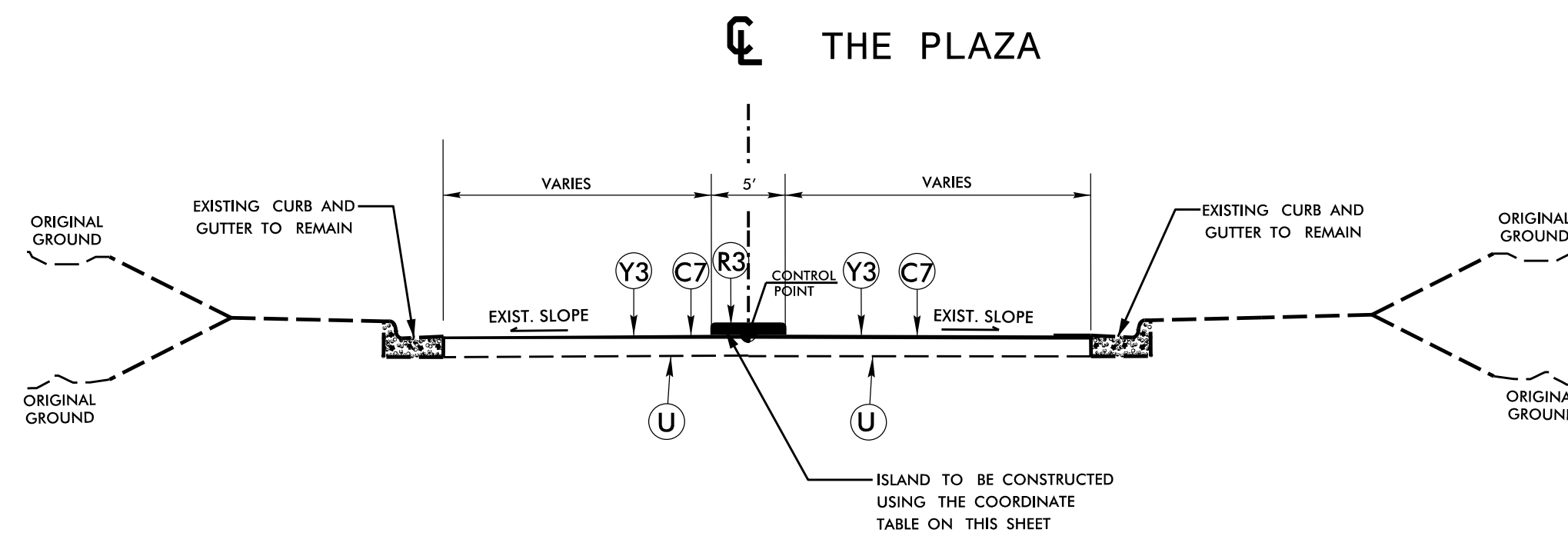
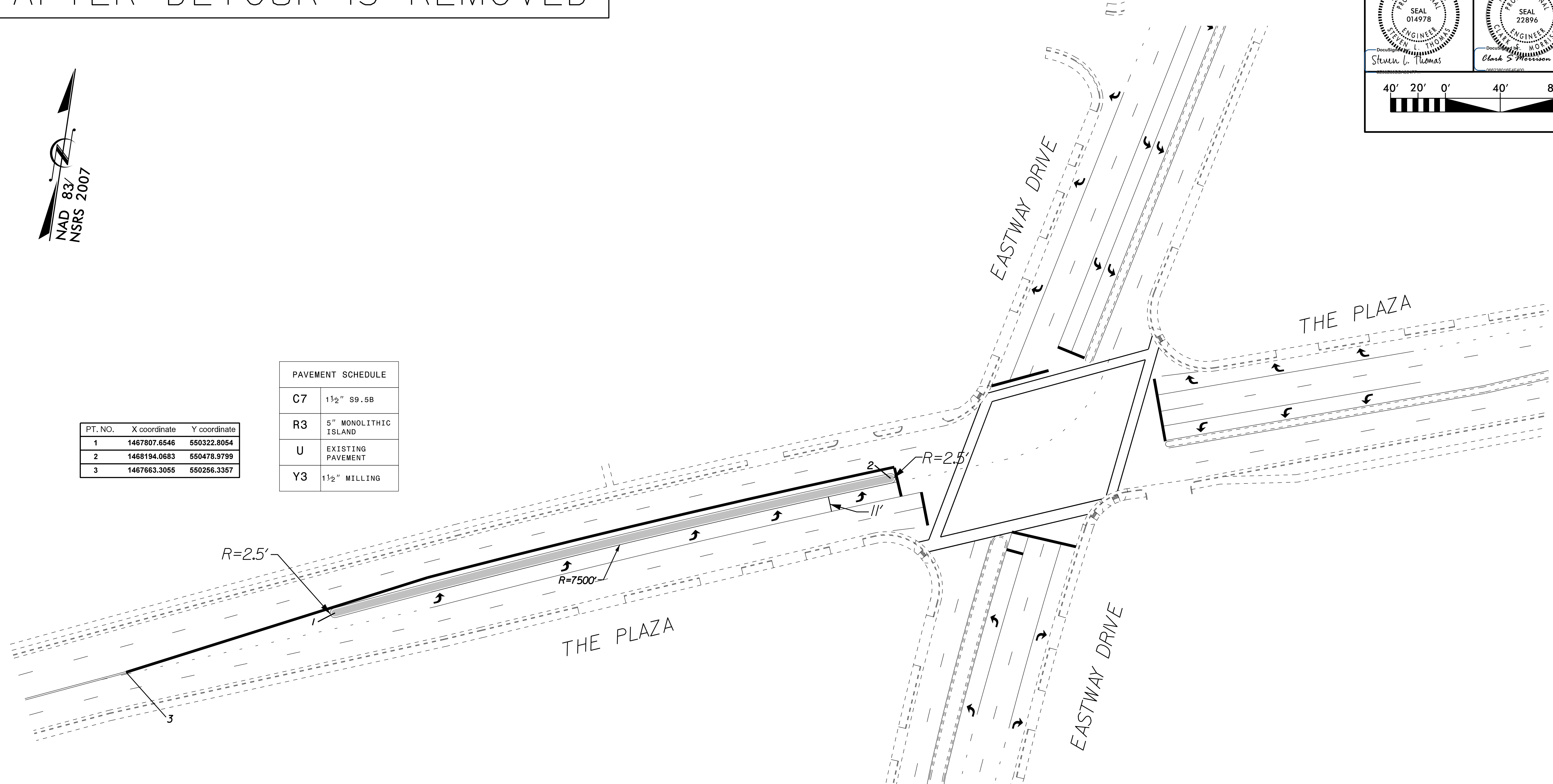
1025 Wade Avenue
Raleigh, NC 27605
Tel: 919-789-9977
Fax: 919-789-9591
License: C-2197

PROJECT REFERENCE NO. U-5008	SHEET NO. 2B-5
RW SHEET NO.	
ROADWAY DESIGN ENGINEER 3/5/2015	PAVEMENT DESIGN ENGINEER 3/5/2015
Steven L. Thomas	Clark S. Morrison



PT. NO.	X coordinate	Y coordinate
1	1467807.6546	550322.8054
2	1468194.0683	550478.9799
3	1467663.3055	550256.3357

PAVEMENT SCHEDULE	
C7	1½" S9.5B
R3	5" MONOLITHIC ISLAND
U	EXISTING PAVEMENT
Y3	1½" MILLING



NOTES:

1. Mill and resurface 15' from point 3 on The Plaza to existing cross walk
2. CDOT is to replace any signal loops that were destroyed by milling

DATE PLOTTED: 03/25/2015 10:58 AM
PLOTTER: HP DesignJet T1100PS
SCALE: 1"=40'
SHEET: 2B-5
PROJECT: U-5008
DRAWN BY: JLM
CHECKED BY: JLM
DATE: 03/25/2015