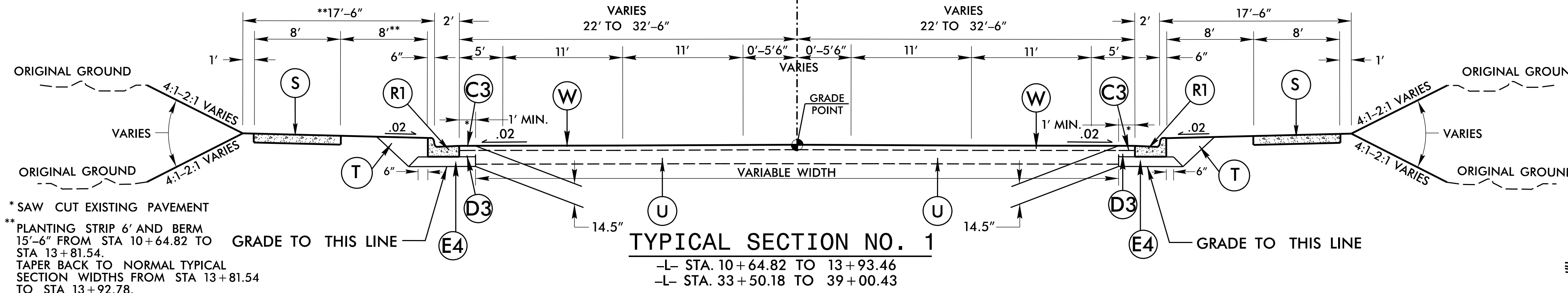


-L- E. SUGAR CREEK ROAD

PROJECT REFERENCE NO. U-5008	SHEET NO. 2A-2
RW SHEET NO.	
ROADWAY DESIGN ENGINEER 3/5/2015	PAVEMENT DESIGN ENGINEER 3/5/2015

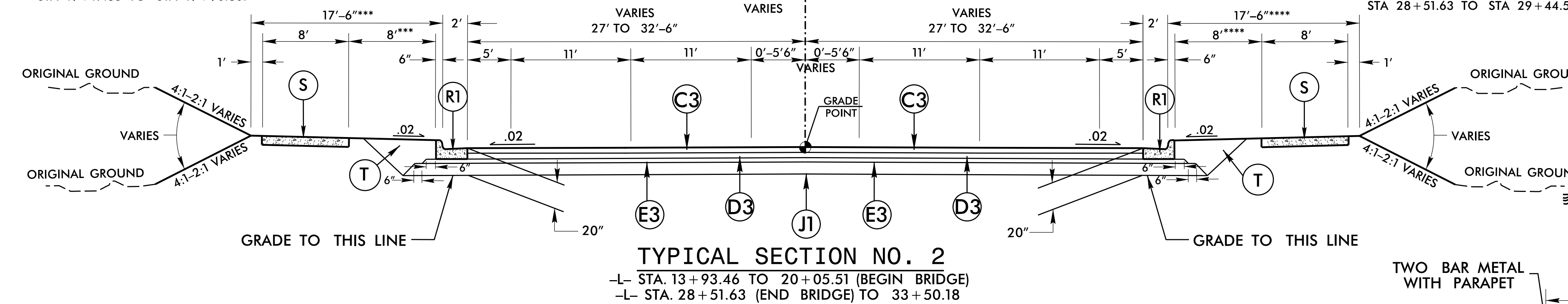
NOT TO SCALE

PAVEMENT EDGE SLOPES 1:1 UNLESS SHOWN OTHERWISE



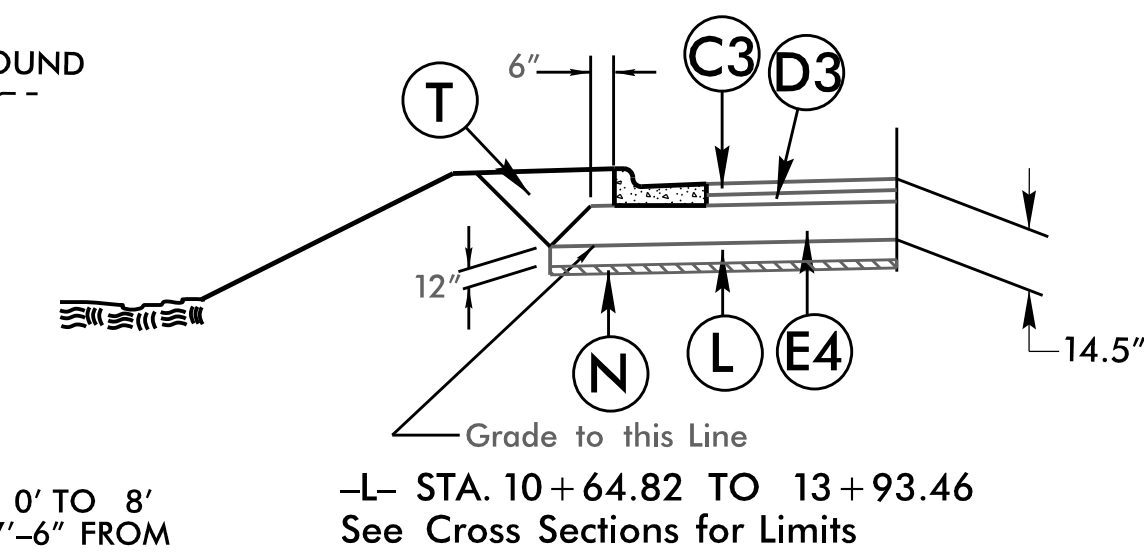
* SAW CUT EXISTING PAVEMENT
** PLANTING STRIP 6' AND BERM 15'-6" FROM STA 10+64.82 TO STA 13+81.54. TAPER BACK TO NORMAL TYPICAL SECTION WIDTHS FROM STA 13+81.54 TO STA 13+92.78.
*** TAPER PLANTING STRIP FROM 8' TO 0' & BERM FROM 17'-6" TO 9'-6" FROM STA 19+17.83 TO STA 19+90.80.

-L- E. SUGAR CREEK ROAD

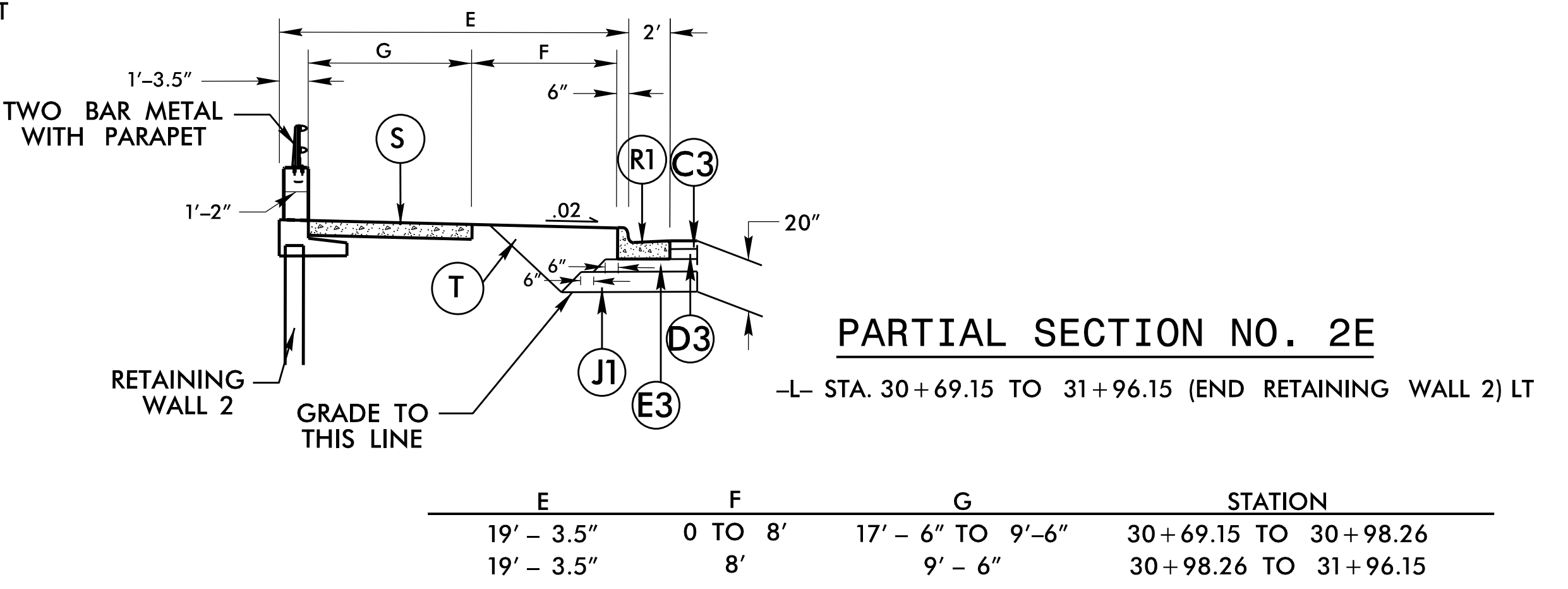
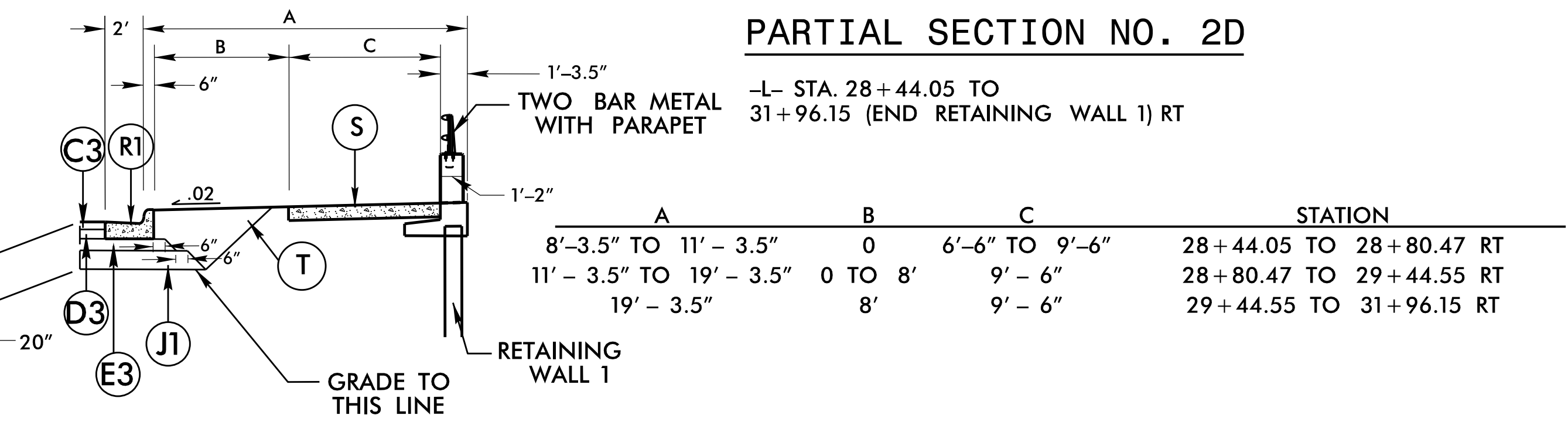
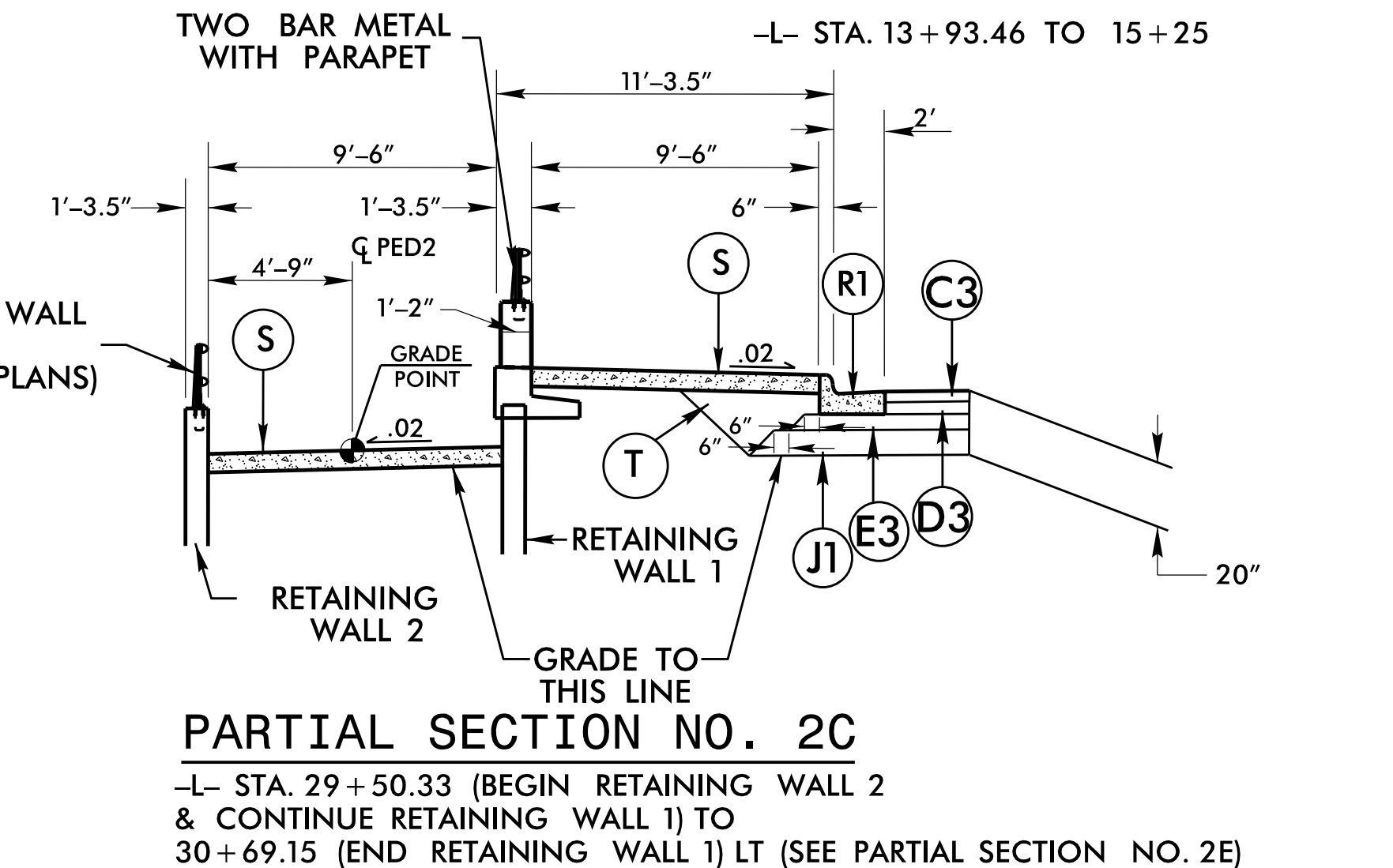
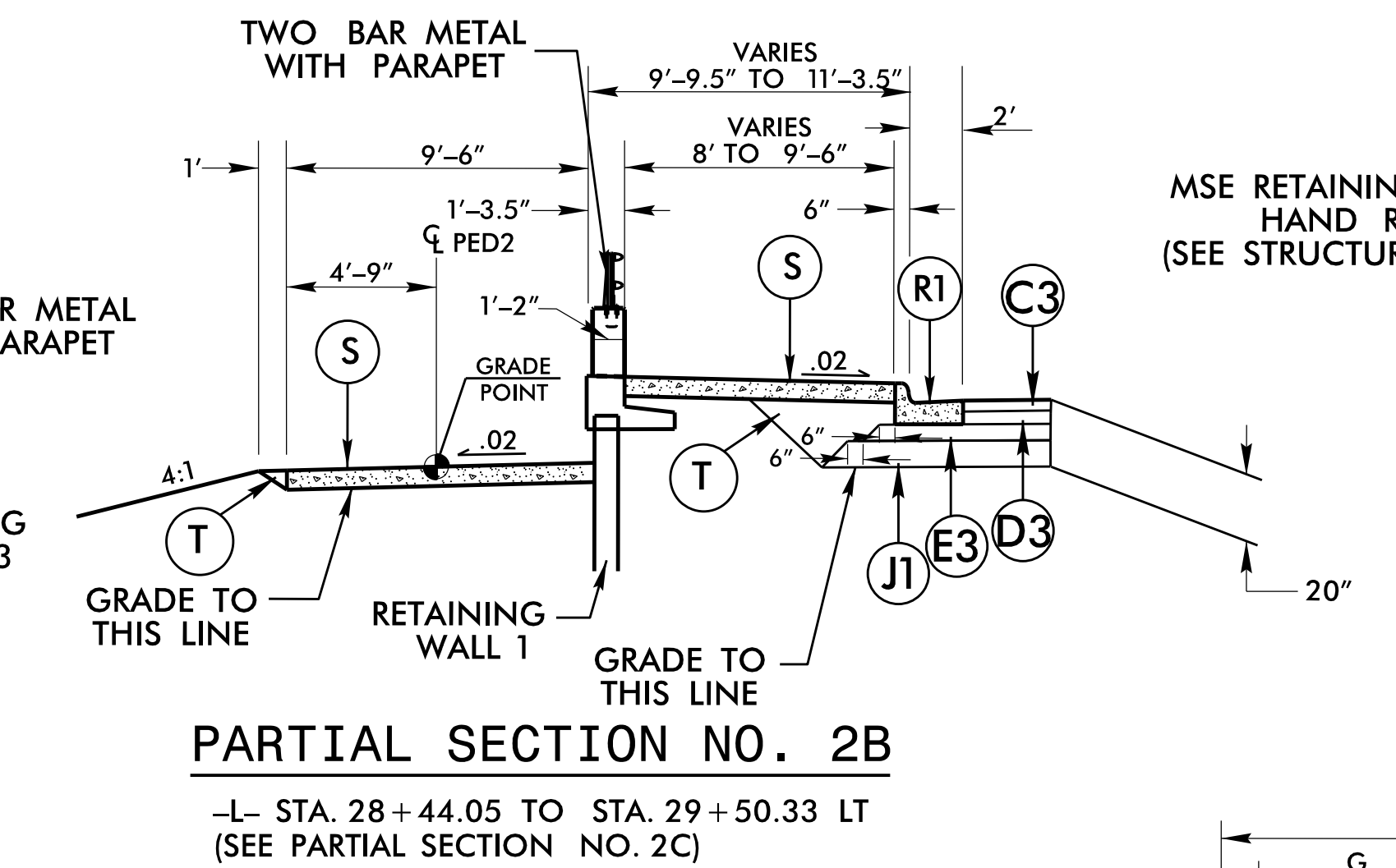
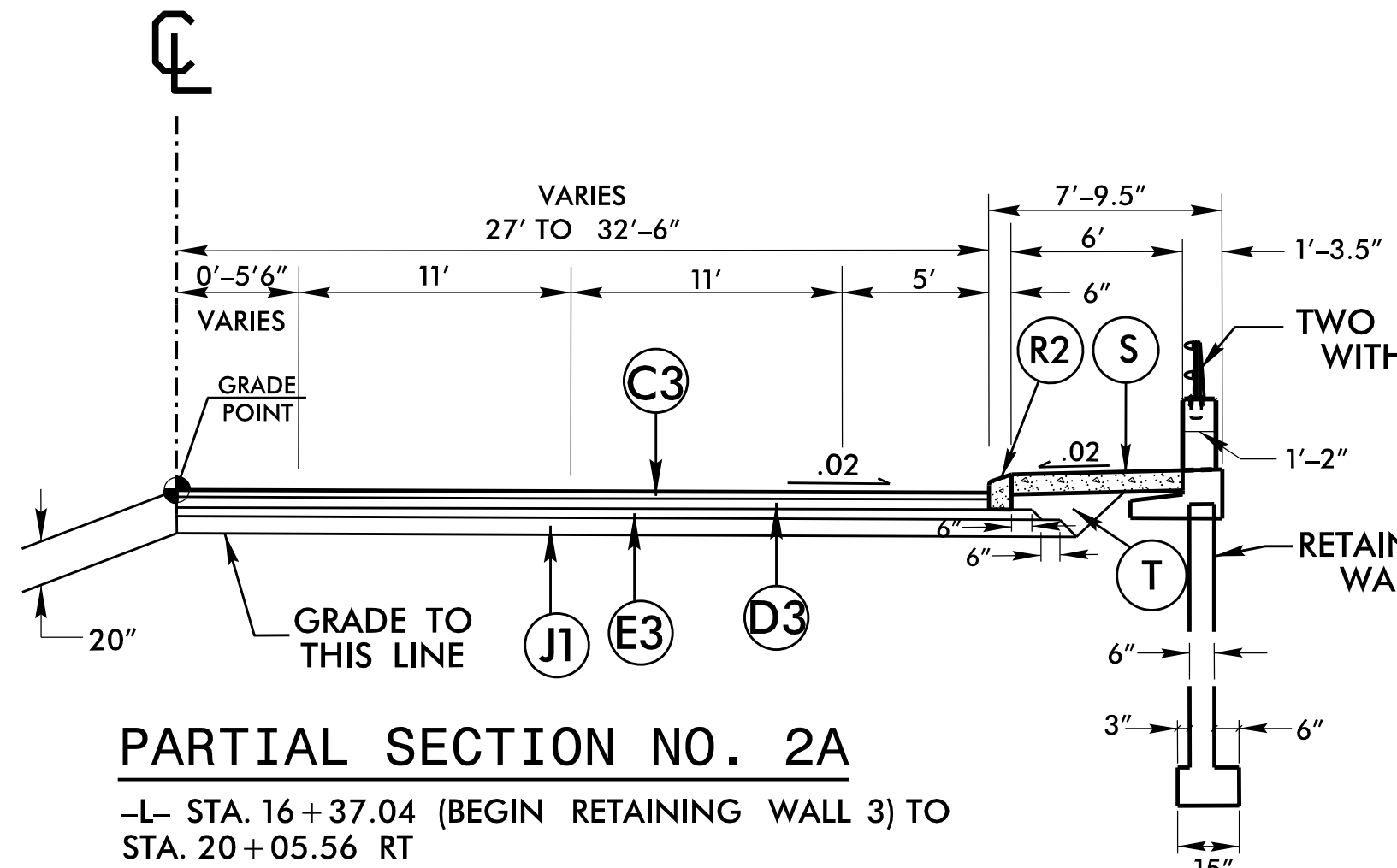
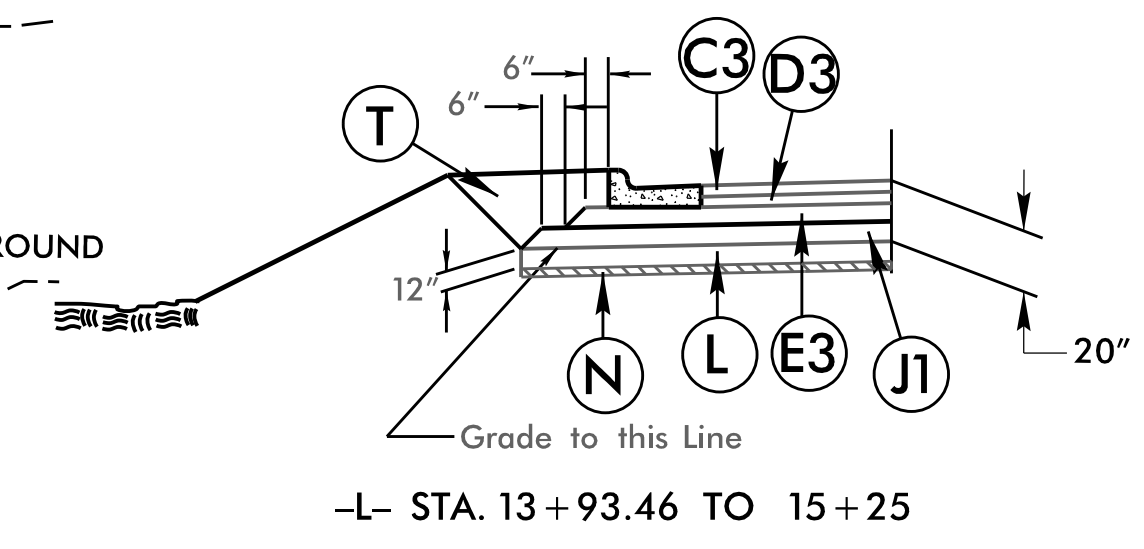


**** TAPER PLANTING STRIP FROM 0' TO 8' & BERM FROM 9'-6" TO 17'-6" FROM STA 28+51.63 TO STA 29+44.55.

SHALLOW UNDERCUT



SHALLOW UNDERCUT



Code	Description
C1	3" SF9.5A
C2	1 1/2" SF9.5A
C3	3" S9.5C
C4	VAR. S9.5C
C5	3" S9.5B
C6	VAR. S9.5B
C7	1 1/2" S9.5B
C8	1 1/2" S9.5C
D1	4" I19.0B
D2	VAR. I19.0B
D3	4" I19.0C
D4	VAR. I19.0C
E1	4" B25.0B
E2	VAR. B25.0B
E3	3" B25.0C
E4	7.5" B25.0C
E5	VAR. B25.0C
E6	4" B25.0C
J1	10" ABC
L	CL IV SUBGR. STAB.
N	GEOTEXTILE
R1	2'-6" C & G
R2	13"x6" CURB
R3	5" MONO-ISLAND
S	4" SIDEWALK
T	EARTH MATERIAL
U	EXISTING PAVEMENT
W	WEDGING
Y1	0" TO 1 1/2" MILLING
Y2	INCIDENTAL MILLING
Y3	1 1/2" MILLING