

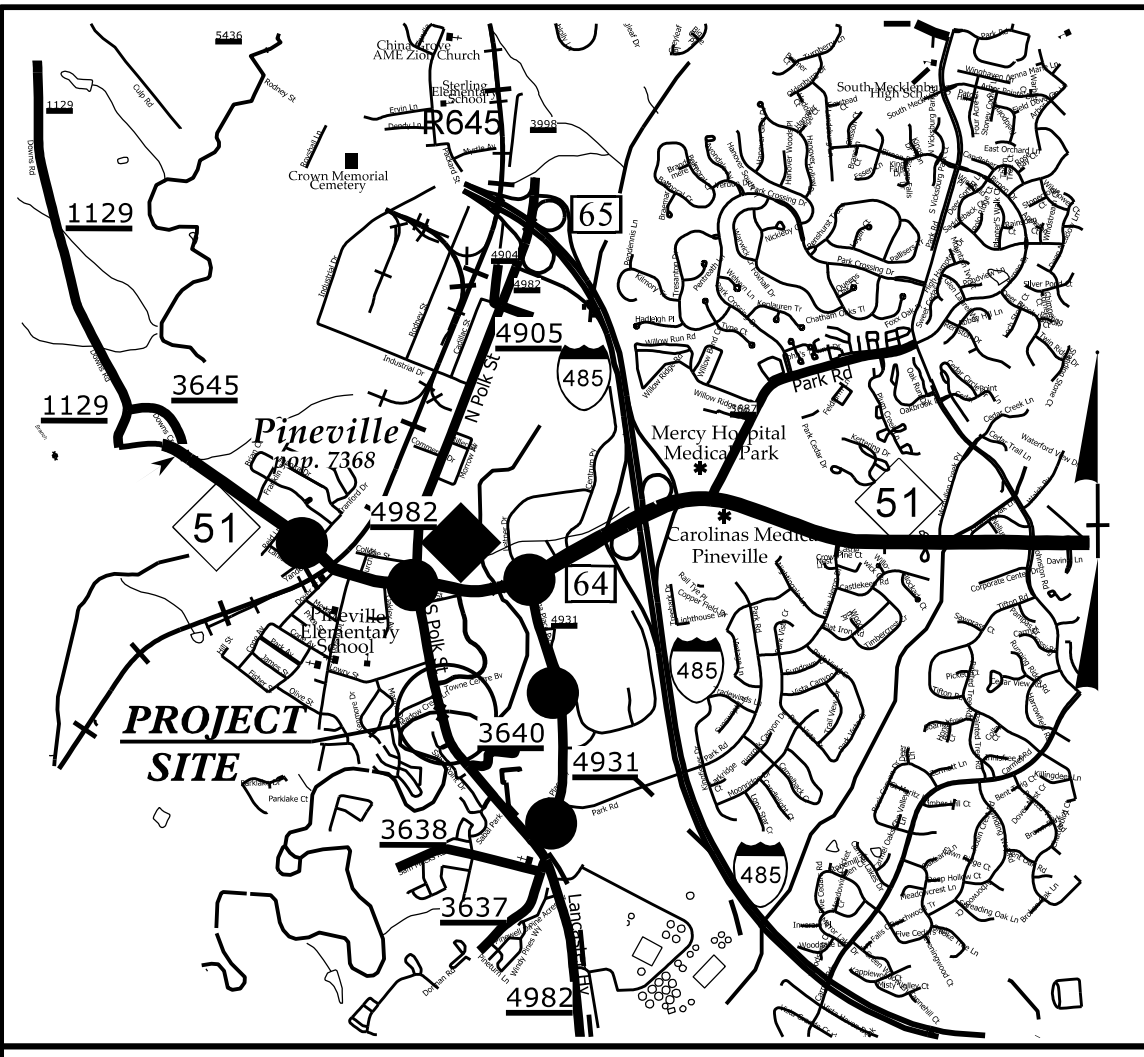
**This electronic collection of documents is provided  
for the convenience of the user  
and is Not a Certified Document –**

**The documents contained herein were originally issued  
and sealed by the individuals whose names and license  
numbers appear on each page, on the dates appearing  
with their signature on that page.**

**This file or an individual page  
shall not be considered a certified document.**

09, 08, 99

See Sheet 1A For Index of Sheets



VICINITY MAP

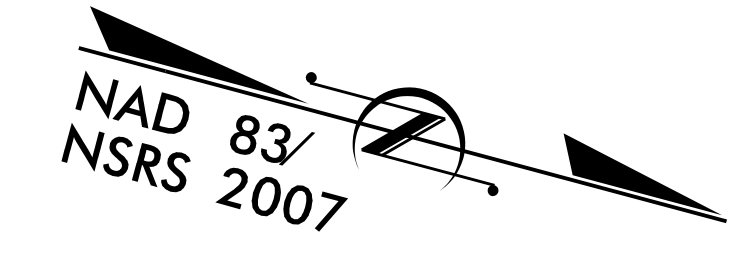
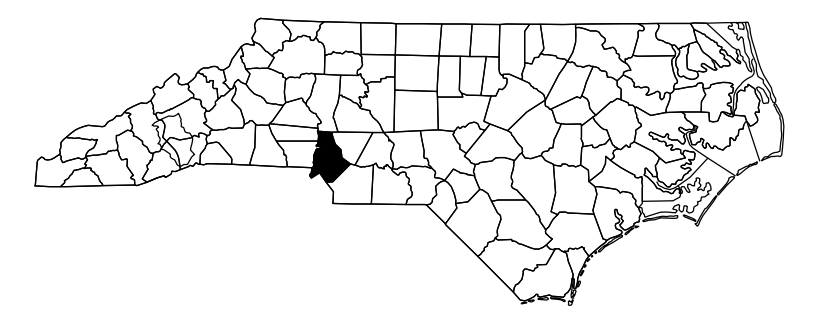
STATE OF NORTH CAROLINA  
DIVISION OF HIGHWAYS

**UTILITIES BY OTHERS PLANS  
MECKLENBURG COUNTY**

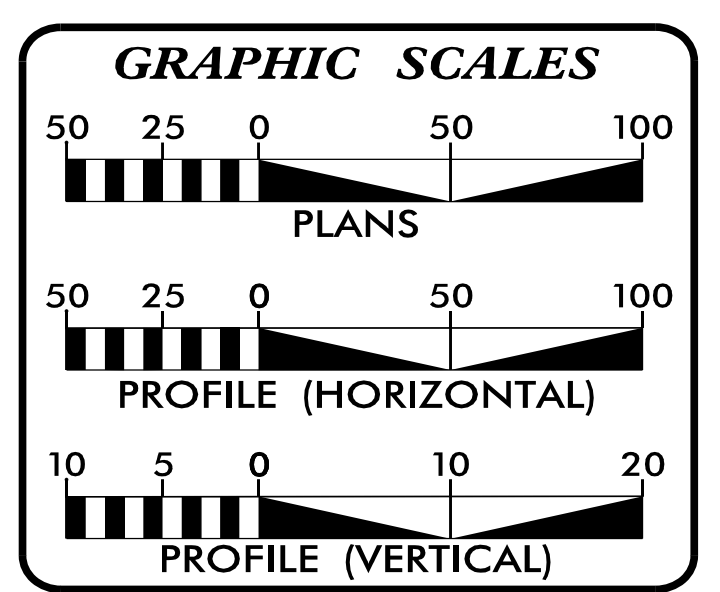
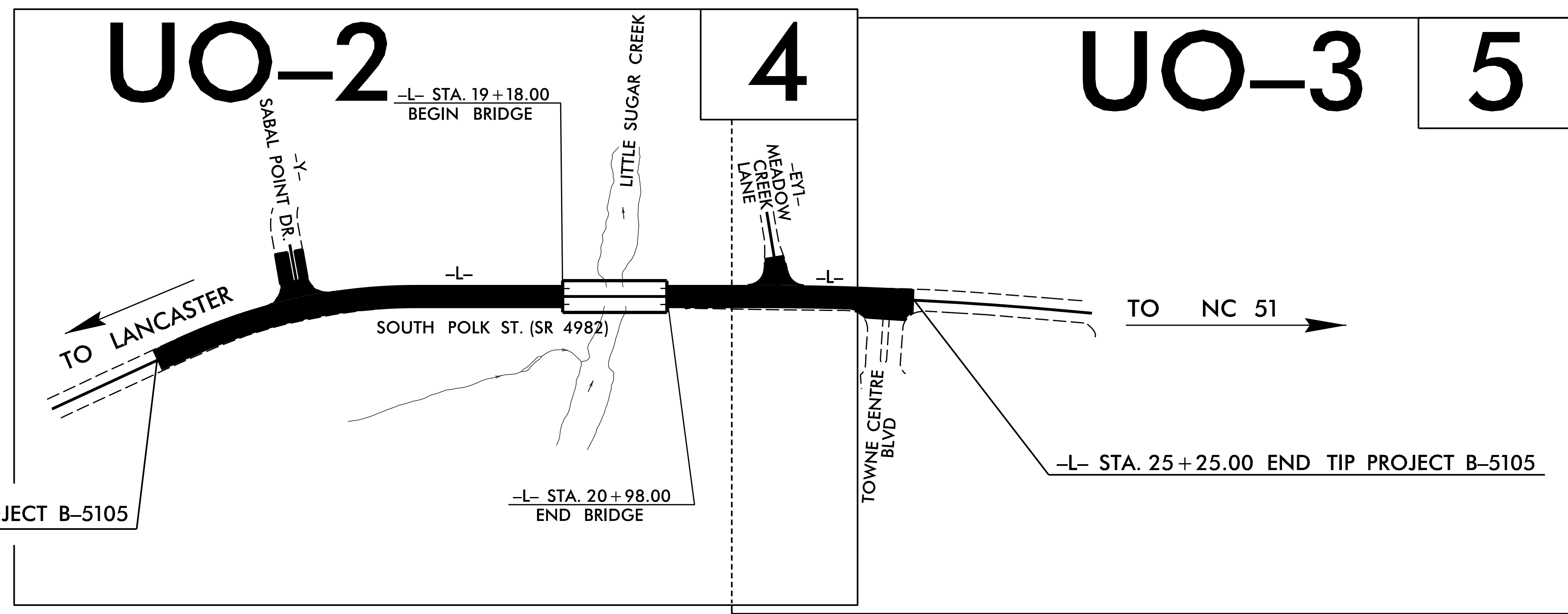
LOCATION: BRIDGE 49 ON SR 4982 (SOUTH POLK ST.)  
OVER LITTLE SUGAR CREEK

TYPE OF WORK: ELECTRIC POWER, TELEPHONE,  
GAS, WATER

T.I.P. NO.	SHEET NO.
B-5105	UO-1



**TIP PROJECT: B-5105**

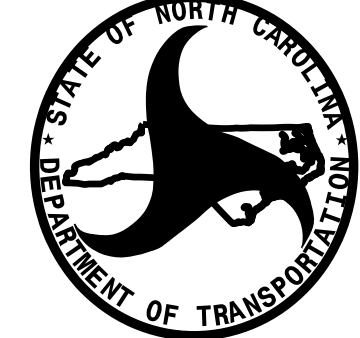


**INDEX OF SHEETS**

SHEET NO.	DESCRIPTION
UO-1	TITLE SHEET
UO-2 THRU UO-3	UTILITIES BY OTHERS PLAN SHEETS

**UTILITY OWNERS ON PROJECT**

- (A) PINEVILLE ELECTRIC DEPARTMENT - POWER
- (B) PINEVILLE TELEPHONE
- (C) AT&T OF NORTH CAROLINA - TELEPHONE
- (D) PIEDMONT NATURAL GAS
- (E) CHARLOTTE MECKLENBURG UTILITIES - WATER



PREPARED IN THE OFFICE OF:  
DIVISION OF HIGHWAYS  
UTILITIES UNIT  
UTILITIES ENGINEERING

1555 MAIL SERVICES CENTER  
RALEIGH, NC 27699-1555  
PHONE (919) 707-6690  
FAX (919) 250-4151

**Roger Worthington, P.E.** UTILITIES SECTION ENGINEER  
**Carl Barclay, P.E.** UTILITIES SQUAD LEADER PROJECT ENGINEER  
**Bo Hemphill, P.E.** UTILITIES PROJECT DESIGNER

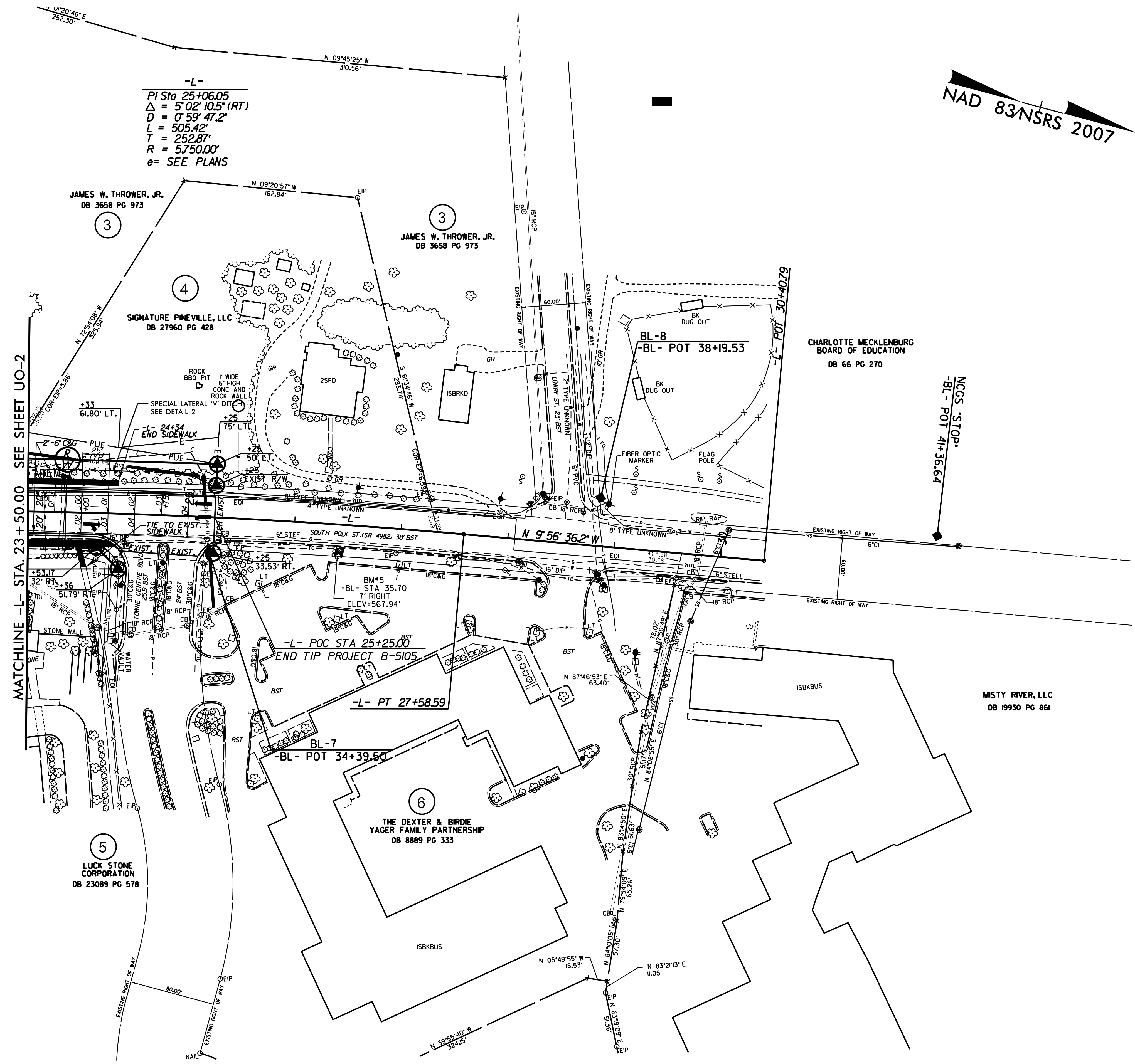
\$\$\$\$\$ SYSTEM \$\$\$\$\$\$  
\$\$\$\$\$ DGN \$\$\$\$\$\$  
\$\$\$\$\$ USERNAME \$\$\$\$\$\$



### UTILITIES BY OTHERS

NOTE:  
 ALL PROPOSED UTILITY WORK SHOWN ON THIS SHEET WILL BE DONE BY OTHERS. NO PAYMENT WILL BE MADE TO THE CONTRACTOR FOR PROPOSED UTILITY WORK SHOWN ON THIS SHEET.

NAD 83/NSRS 2007



-L-  
 PI Sta 25+06.05  
 $\Delta = 5^{\circ}02'10.5''$  (RT)  
 $D = 0^{\circ}59'47.2''$   
 $L = 505.42'$   
 $T = 252.87'$   
 $R = 5,750.00'$   
 $e = \text{SEE PLANS}$

MATCHLINE -L- STA. 23+50.00 SEE SHEET U0-2

JAMES W. THROWER, JR.  
 DB 3658 PG 973

JAMES W. THROWER, JR.  
 DB 3658 PG 973

SIGNATURE PINEVILLE, LLC  
 DB 27960 PG 428

CHARLOTTE MECKLENBURG  
 BOARD OF EDUCATION  
 DB 66 PG 270

LUCK STONE CORPORATION  
 DB 23089 PG 578

THE DEXTER & BIRDIE  
 YAGER FAMILY PARTNERSHIP  
 DB 8889 PG 333

MISTY RIVER, LLC  
 DB 19930 PG 861

5/14/99