

**This electronic collection of documents is provided
for the convenience of the user
and is Not a Certified Document –**

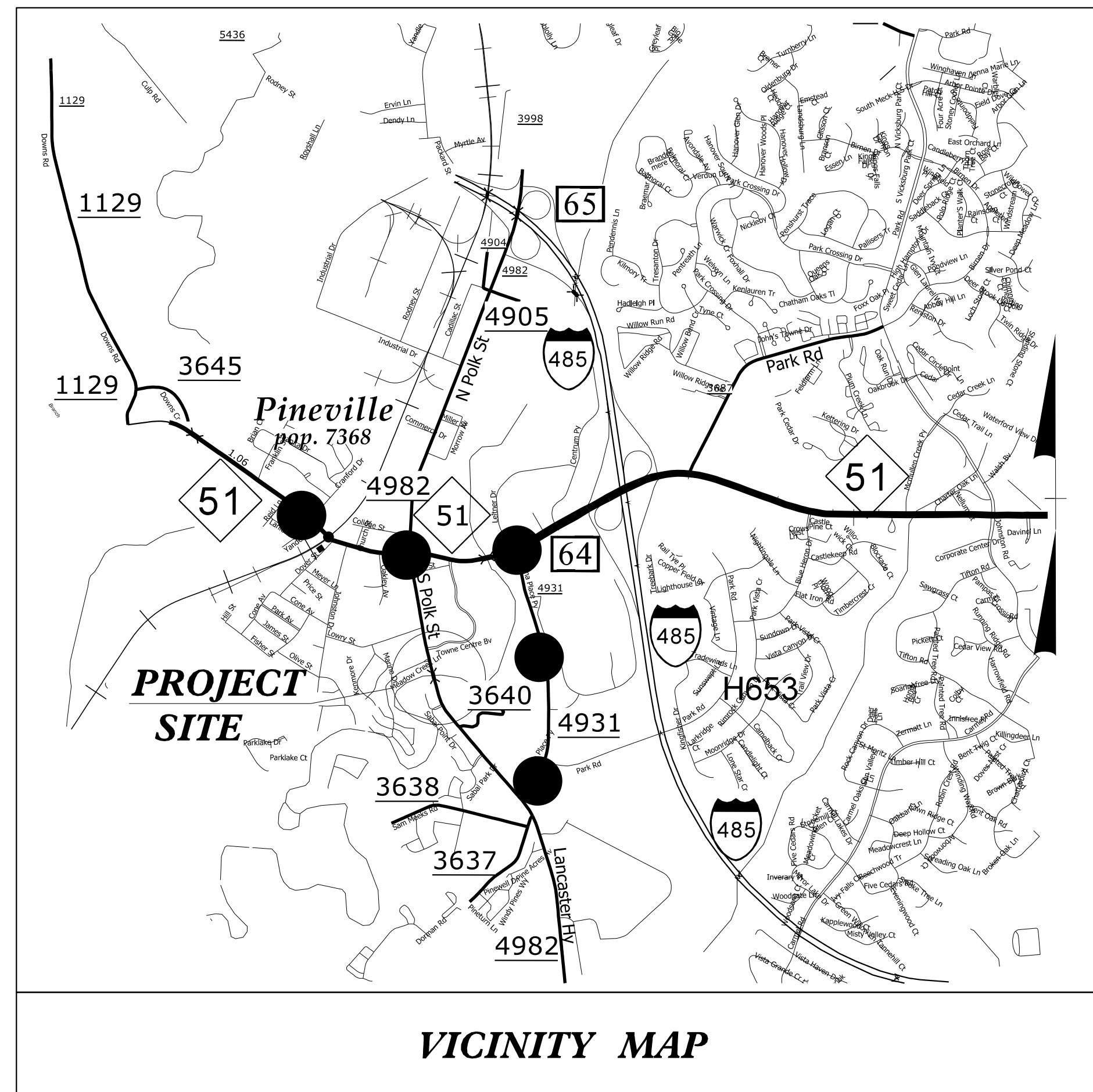
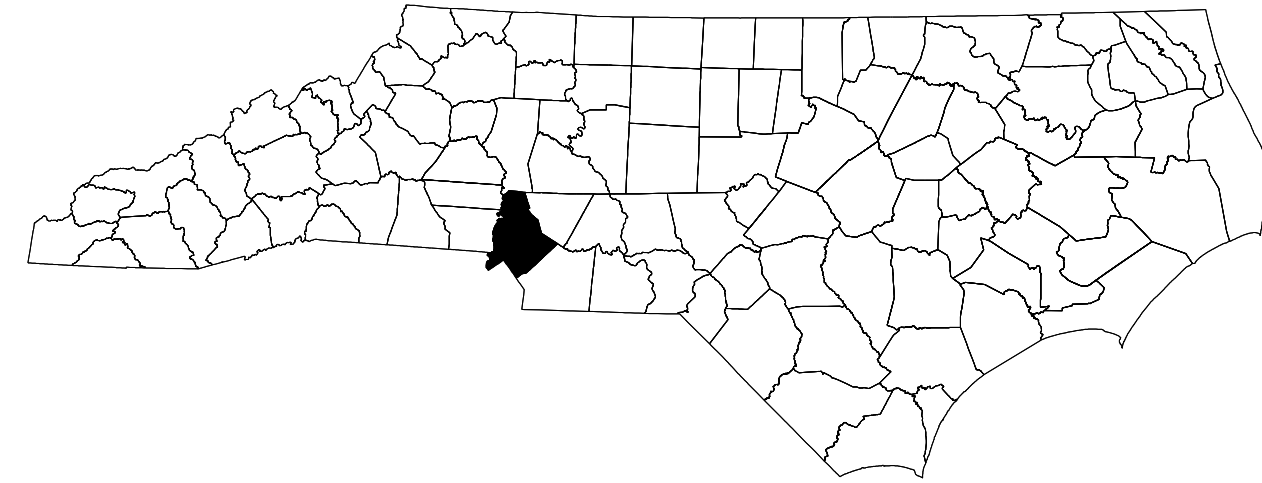
**The documents contained herein were originally issued
and sealed by the individuals whose names and license
numbers appear on each page, on the dates appearing
with their signature on that page.**

**This file or an individual page
shall not be considered a certified document.**

STATE OF NORTH CAROLINA
DIVISION OF HIGHWAYS

TRANSPORTATION MANAGEMENT PLAN

MECKLENBURG COUNTY



VICINITY MAP

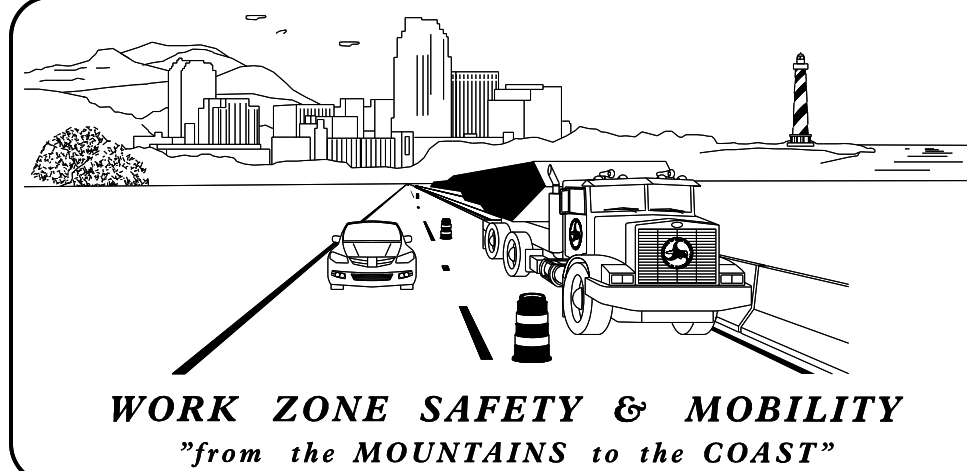
SHEET NO.	TITLE
TMP-1	TITLE SHEET, VICINITY MAP AND INDEX OF SHEETS
TMP-1A	LIST OF APPLICABLE ROADWAY STANDARD DRAWINGS, AND LEGEND
TMP-1B	TRANSPORTATION OPERATIONS PLAN: (MANAGEMENT STRATEGIES AND GENERAL NOTES)
TMP-2	SPECIAL SIGN DESIGN
TMP-3	OFF-SITE DETOUR, BARRICADE PLACEMENT, AND PHASING
TMP-4	TEMPORARY PAVEMENT MARKING PLAN

SHEET NO.
TMP-1

B-5105

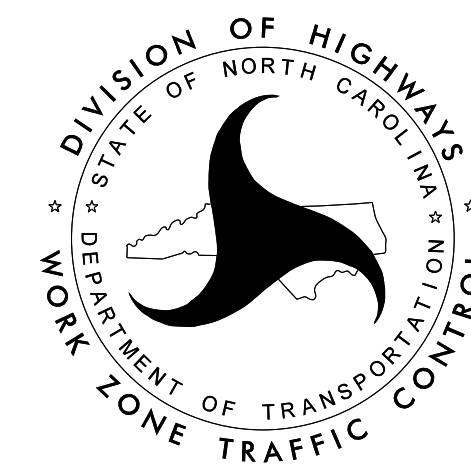
TIP PROJECT:

5/4/2015
P:\TIP\Projects-B\B5105\TrafficControl\TCP\B-5105_TC_TMP_01.dgn
User:shassan



N.C.D.O.T. WORK ZONE TRAFFIC CONTROL
1561 MAIL SERVICE CENTER (MSC) RALEIGH, NC 27699-1561
750 N. GREENFIELD PARKWAY, GARNER, NC 27529 (DELIVERY)
PHONE: (919) 773-2800 FAX: (919) 771-2745

J. S. BOURNE, P.E. STATE TRAFFIC MANAGEMENT ENGINEER
J. W. WOOLARD, P.E. TRAFFIC CONTROL PROJECT ENGINEER
R. M. GARRETT TRAFFIC CONTROL PROJECT DESIGN ENGINEER
S. HASSAN, P.E. TRAFFIC CONTROL DESIGN ENGINEER



APPROVED: *J. W. Woolard, Jr.*
DATE: 5/4/2015

SEAL

MANAGEMENT STRATEGIES

CONSTRUCTION

REMOVE AND REPLACE EXISTING STRUCTURE AND APPROACHES ALONG THE EXISTING ROADWAY ALIGNMENT AS SHOWN IN ROADWAY PLANS.

TMP DESIGN PARAMETERS

THROUGH TRAFFIC WILL BE DETOURED OFF-SITE DURING THE CONSTRUCTION PERIOD.

THE OFF-SITE DETOUR WILL INCLUDE SR 4931 (CAROLINA PLACE PKWY) AND NC 51 (PINEVILLE-MATHEWS RD).

LOCAL TRAFFIC WILL BE MAINTAINED UNDER FLAGGING ON SR 4982 (S POLK ST).

GENERAL NOTES

CHANGES MAY BE REQUIRED WHEN PHYSICAL DIMENSIONS IN THE DETAIL DRAWINGS, STANDARD DETAILS, AND ROADWAY DETAILS ARE NOT ATTAINABLE TO MEET FIELD CONDITIONS OR RESULT IN DUPLICATE OR UNDESIRED OVERLAPPING OF DEVICES. MODIFICATION MAY INCLUDE: MOVING, SUPPLEMENTING, COVERING, OR REMOVAL OF DEVICES AS DIRECTED BY THE ENGINEER.

THE FOLLOWING GENERAL NOTES APPLY AT ALL TIMES FOR THE DURATION OF THE CONSTRUCTION PROJECT EXCEPT WHEN OTHERWISE NOTED IN THE PLAN OR DIRECTED BY THE ENGINEER.

TIME RESTRICTIONS

A) DO NOT CLOSE OR NARROW TRAVEL LANES AS FOLLOWS:

ROAD NAME	DAY AND TIME RESTRICTIONS
ANY ROAD OUTSIDE OF FULL ROAD CLOSURE	MONDAY THROUGH FRIDAY 6:00 A.M. - 9:00 A.M. 2:30 P.M. - 8:00 P.M.

B) DO NOT CLOSE OR NARROW TRAVEL LANES DURING HOLIDAYS AND SPECIAL EVENTS AS FOLLOWS:

ROAD NAME	HOLIDAY
ANY ROAD OUTSIDE OF FULL ROAD CLOSURE	

1. FOR ANY UNEXPECTED OCCURRENCE THAT CREATES UNUSUALLY HIGH TRAFFIC VOLUMES, AS DIRECTED BY THE ENGINEER.
2. FOR NEW YEAR'S, BETWEEN THE HOURS OF 6:00 A.M. DECEMBER 31st, TO 8:00 P.M. JANUARY 2ND. IF NEW YEAR'S DAY IS ON A FRIDAY, SATURDAY, SUNDAY, OR MONDAY THEN UNTIL 8:00 P.M. THE FOLLOWING TUESDAY.
3. FOR EASTER, BETWEEN THE HOURS OF 6:00 A.M. THURSDAY AND 8:00 P.M. MONDAY.
4. FOR MEMORIAL DAY, BETWEEN THE HOURS OF 6:00 A.M. FRIDAY TO 8:00 P.M. TUESDAY.
5. FOR INDEPENDENCE DAY, BETWEEN THE HOURS OF 6:00 A.M. THE DAY BEFORE INDEPENDENCE DAY AND 8:00 P.M. THE DAY AFTER INDEPENDENCE DAY.

IF INDEPENDENCE DAY IS ON A FRIDAY, SATURDAY, SUNDAY OR MONDAY THEN BETWEEN THE HOURS OF 6:00 A.M. THE THURSDAY BEFORE INDEPENDENCE DAY AND 8:00 P.M. THE TUESDAY AFTER INDEPENDENCE DAY.
6. FOR LABOR DAY, BETWEEN THE HOURS OF 6:00 A.M. FRIDAY AND 8:00 P.M. TUESDAY.
7. FOR THANKSGIVING DAY, BETWEEN THE HOURS OF 6:00 A.M. TUESDAY TO 8:00 P.M. MONDAY.
8. FOR CHRISTMAS, BETWEEN THE HOURS OF 6:00 A.M. THE FRIDAY BEFORE THE WEEK OF CHRISTMAS DAY AND 8:00 P.M. THE FOLLOWING TUESDAY AFTER THE WEEK OF CHRISTMAS.

LANE AND SHOULDER CLOSURE REQUIREMENTS

- C) REMOVE LANE CLOSURE DEVICES FROM THE LANE WHEN WORK IS NOT BEING PERFORMED BEHIND THE LANE CLOSURE OR WHEN A LANE CLOSURE IS NO LONGER NEEDED OR AS DIRECTED BY THE ENGINEER.
- D) WHEN PERSONNEL AND/OR EQUIPMENT ARE WORKING WITHIN A LANE OF TRAVEL OF AN UNDIVIDED OR DIVIDED FACILITY, CLOSE THE LANE ACCORDING TO THE TRAFFIC CONTROL PLANS, ROADWAY STANDARD DRAWINGS, OR AS DIRECTED BY THE ENGINEER. CONDUCT THE WORK SO THAT ALL PERSONNEL AND/OR EQUIPMENT REMAIN WITHIN THE CLOSED TRAVEL LANE.
- E) DO NOT WORK SIMULTANEOUSLY WITHIN 15 FT ON BOTH SIDES OF AN OPEN TRAVELWAY, RAMP, OR LOOP WITHIN THE SAME LOCATION UNLESS PROTECTED WITH GUARDRAIL OR BARRIER.

GENERAL NOTES (CONTINUED)

PAVEMENT EDGE DROP OFF REQUIREMENTS

F) BACKFILL AT A 6:1 SLOPE UP TO THE EDGE AND ELEVATION OF EXISTING PAVEMENT IN AREAS ADJACENT TO AN OPENED TRAVEL LANE THAT HAS AN EDGE OF PAVEMENT DROP-OFF AS FOLLOWS:

BACKFILL DROP-OFFS THAT EXCEED 2 INCHES ON ROADWAYS WITH POSTED SPEED LIMITS OF 45 MPH OR GREATER.

BACKFILL DROP-OFFS THAT EXCEED 3 INCHES ON ROADWAYS WITH POSTED SPEED LIMITS LESS THAN 45 MPH.

BACKFILL WITH SUITABLE COMPACTED MATERIAL, AS APPROVED BY THE ENGINEER, AT NO EXPENSE TO THE DEPARTMENT.

G) DO NOT EXCEED A DIFFERENCE OF 2 INCHES IN ELEVATION BETWEEN OPEN LANES OF TRAFFIC FOR NOMINAL LIFTS OF 1.5 INCHES. INSTALL ADVANCE WARNING "UNEVEN LANES" SIGNS (W8-11) 200 FT IN ADVANCE AND A MINIMUM OF EVERY HALF MILE THROUGHOUT THE UNEVEN AREA.

TRAFFIC PATTERN ALTERATIONS

H) NOTIFY THE ENGINEER TWENTY ONE (21) CALENDAR DAYS PRIOR TO ANY TRAFFIC PATTERN ALTERATION.

SIGNING

I) INSTALL ADVANCE WORK ZONE WARNING SIGNS WHEN WORK IS WITHIN 40 FT FROM THE EDGE OF TRAVEL LANE AND NO MORE THAN THREE (3) DAYS PRIOR TO THE BEGINNING OF CONSTRUCTION.

J) PROVIDE SIGNING AND DEVICES REQUIRED TO CLOSE THE ROAD ACCORDING TO THE ROADWAY STANDARD DRAWINGS AND TRAFFIC CONTROL PLANS. PROVIDE SIGNING REQUIRED FOR THE OFF-SITE DETOUR ROUTE AS SHOWN IN THE TRAFFIC CONTROL PLANS.

K) COVER OR REMOVE ALL SIGNS AND DEVICES REQUIRED TO CLOSE THE ROAD WHEN ROAD CLOSURE IS NOT IN OPERATION.

COVER OR REMOVE ALL SIGNS REQUIRED FOR THE OFF-SITE DETOUR WHEN THE DETOUR IS NOT IN OPERATION.

L) ENSURE ALL NECESSARY SIGNING IS IN PLACE PRIOR TO ALTERING ANY TRAFFIC PATTERN.

TRAFFIC CONTROL DEVICES

M) WHEN LANE CLOSURES ARE NOT IN EFFECT SPACE CHANNELIZING DEVICES IN WORK AREAS NO GREATER IN FEET THAN TWICE THE POSTED SPEED LIMIT (MPH) EXCEPT, 10 FT ON-CENTER IN RADII, AND 3 FT OFF THE EDGE OF AN OPEN TRAVELWAY. REFER TO STANDARD SPECIFICATIONS FOR ROADS AND STRUCTURES SECTIONS 1130 (DRUMS), 1135 (CONES), AND 1180 (SKINNY DRUMS) FOR ADDITIONAL REQUIREMENTS.

N) PLACE TYPE III BARRICADES, WITH "ROAD CLOSED" SIGN R11-2 ATTACHED, OF SUFFICIENT LENGTH TO CLOSE ENTIRE ROADWAY.

PAVEMENT MARKINGS AND MARKERS

O) INSTALL TEMPORARY PAVEMENT MARKINGS AND TEMPORARY PAVEMENT MARKERS ON INTERIM LAYERS OF PAVEMENT AS FOLLOWS:

ROAD NAME	MARKING	MARKER
S POLK ST	PAINT	N/A
CAROLINA PLACE PWKY	PAINT	N/A

P) PLACE ONE APPLICATION OF PAINT FOR TEMPORARY TRAFFIC PATTERNS. PLACE A SECOND APPLICATION OF PAINT SIX (6) MONTHS AFTER THE INITIAL APPLICATION AND EVERY SIX MONTHS AS DIRECTED BY THE ENGINEER.

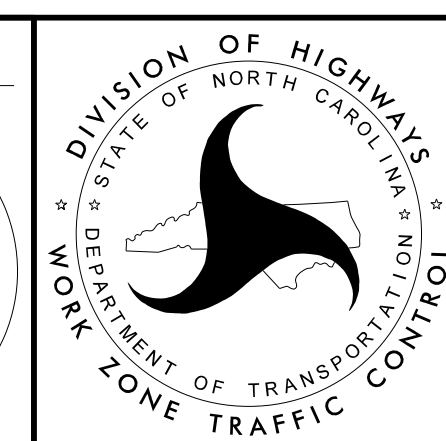
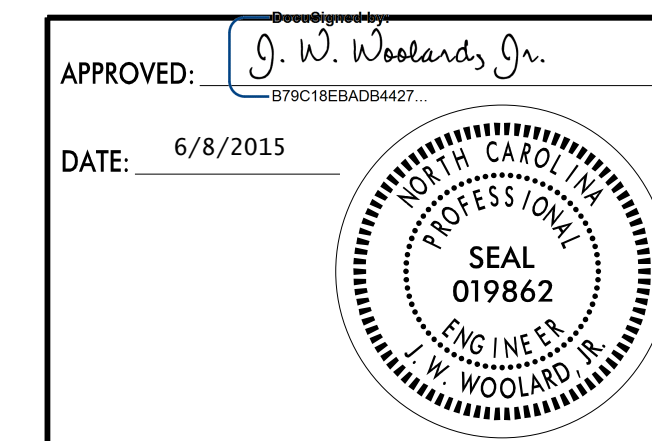
Q) REMOVE/REPLACE ANY CONFLICTING/DAMAGED PAVEMENT MARKINGS AND MARKERS BY THE END OF EACH DAY'S OPERATION.

R) CONTRACTOR SHALL MAINTAIN SIDEWALK ACCESS AT ALL TIMES AS STATED IN THE PHASING. CONTRACTOR SHALL BE RESPONSIBLE TO PROVIDE TEMPORARY SIDEWALKS (CONCRETE, ASPHALT, OR OTHER SUITABLE MATERIAL AS APPROVED BY THE ENGINEER) AT ALL LOCATIONS WHERE THE OPEN PEDESTRIAN TRAVELWAY HAS BEEN REMOVED FOR CONSTRUCTION OPERATIONS (UTILITIES, DRAINAGE, ETC.).

LOCAL NOTES

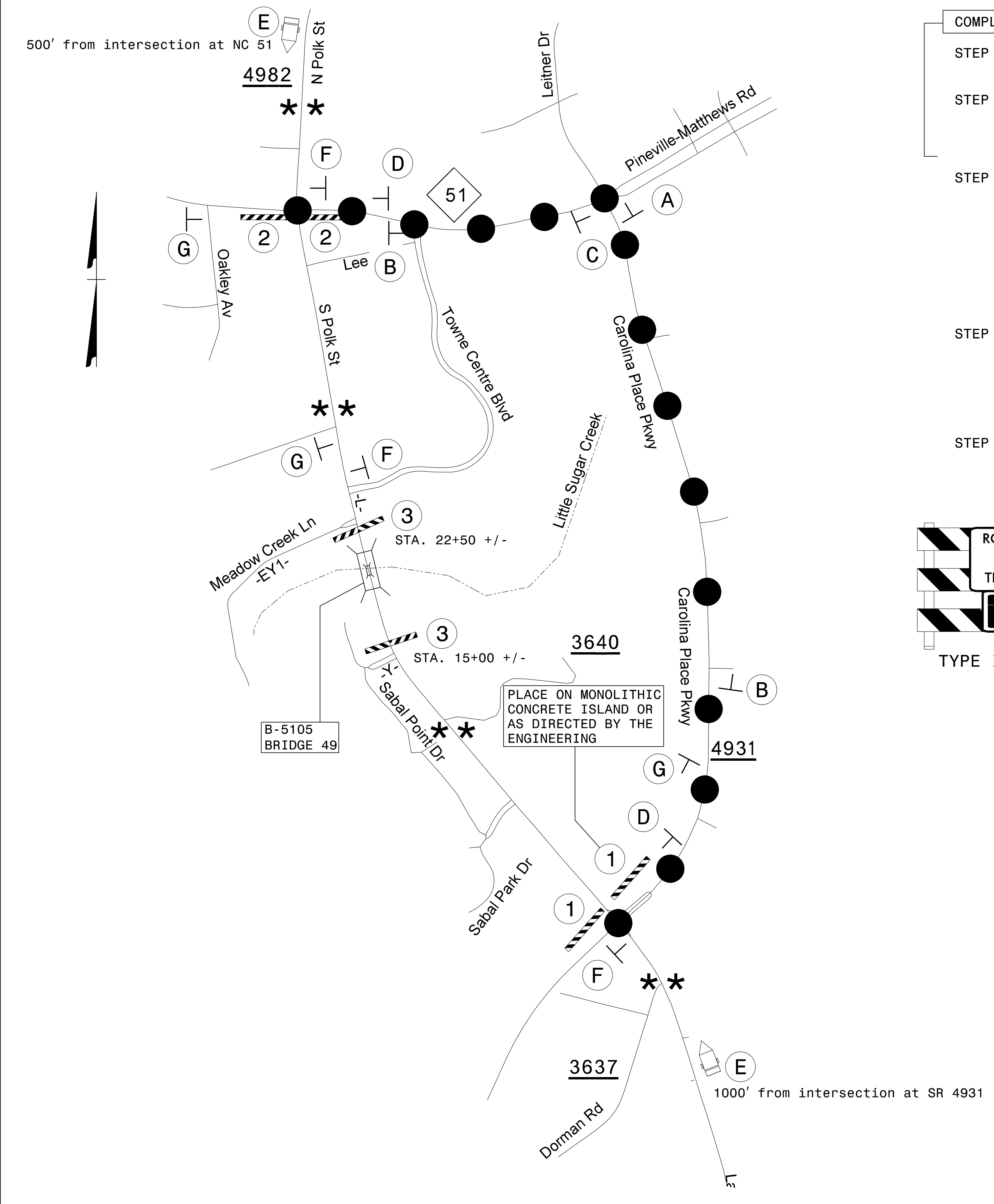
A) CONTACT MECKLENBURG COUNTY SCHOOLS AT (704)343-6715 AT LEAST ONE MONTH PRIOR TO ROAD CLOSURE.

B) CONTACT MECKLENBURG COUNTY EMERGENCY SERVICES AT (704)336-2412 AT LEAST ONE MONTH PRIOR TO ROAD CLOSURE.



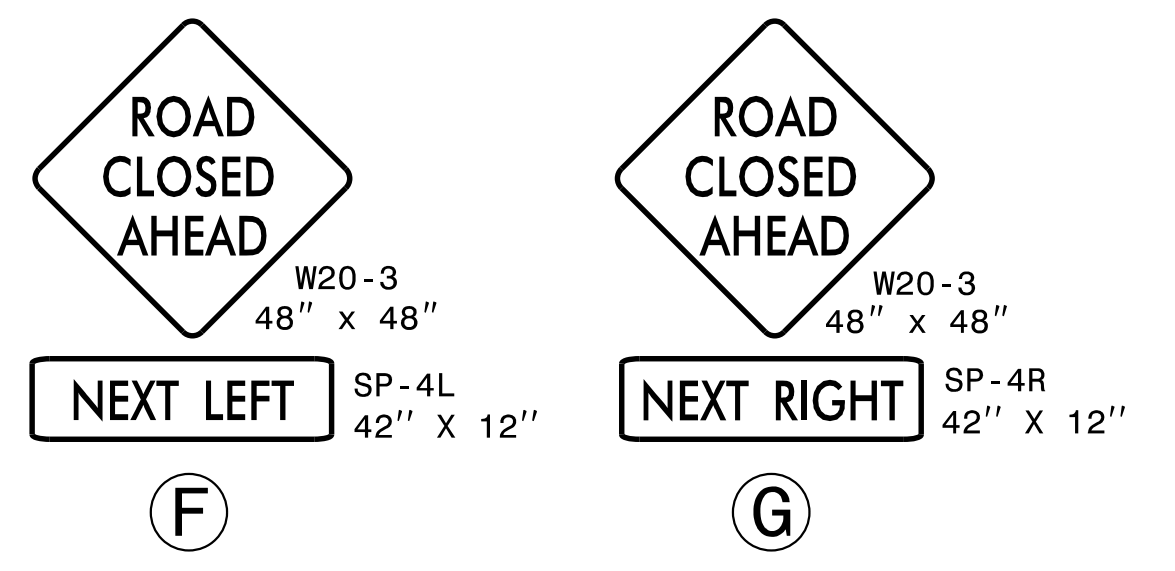
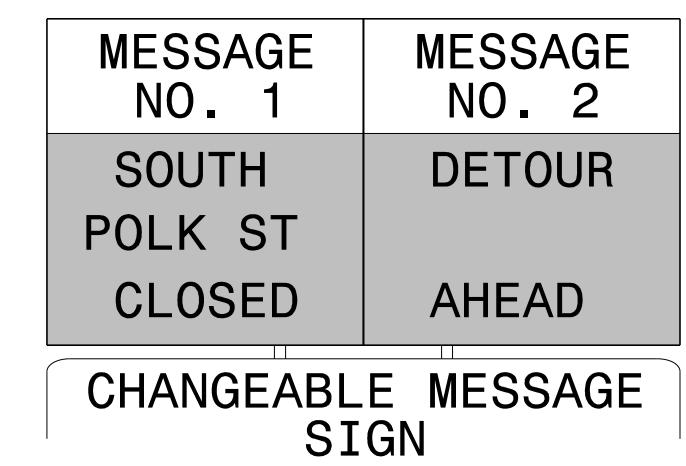
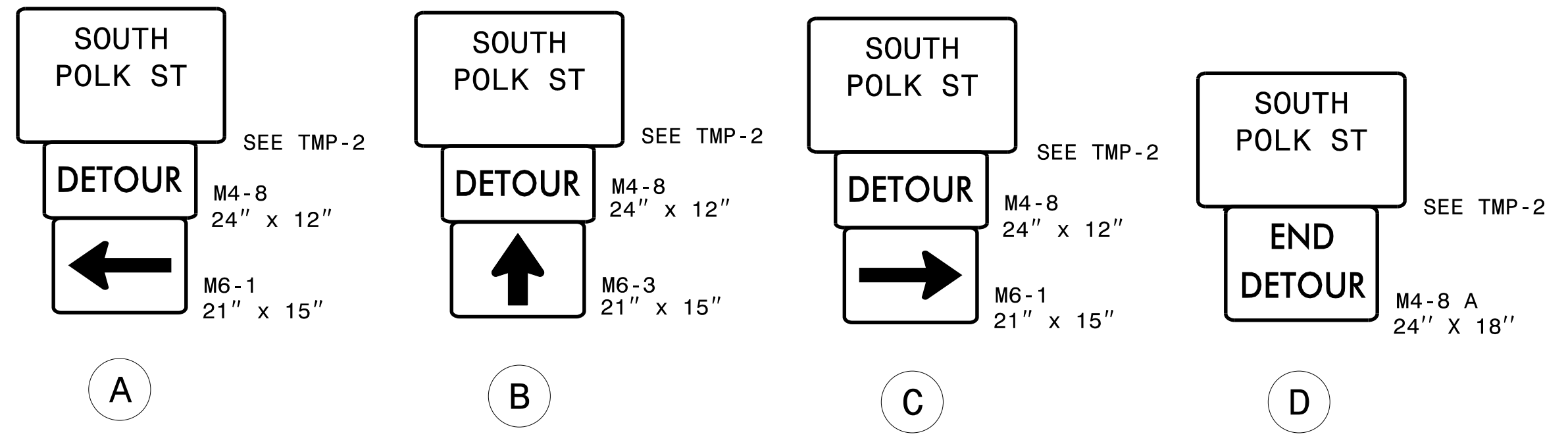
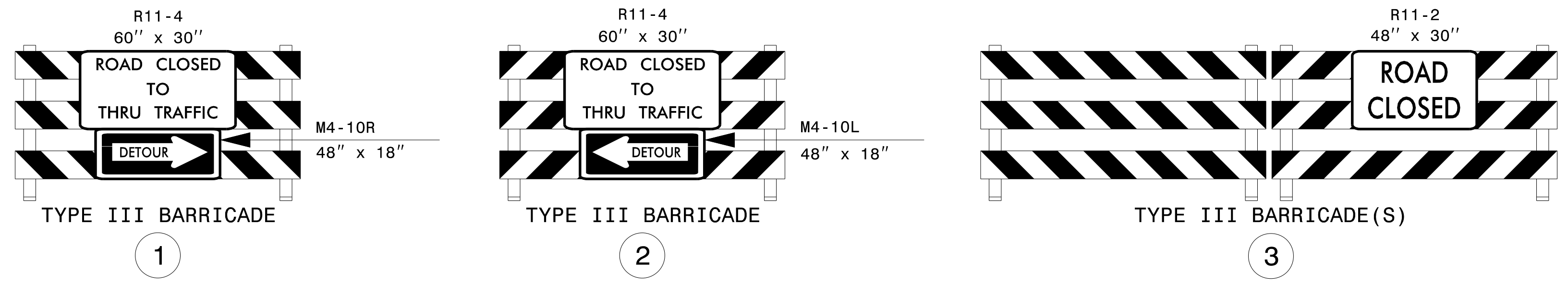
**TRANSPORTATION
OPERATIONS
PLAN**

PHASING



COMPLETE THE WORK IN STEP 1 AND STEP 2 IN THREE (3) CONSECUTIVE CALENDAR DAYS. SEE INTERMEDIATE CONTRACT TIMES AND LIQUIDATED DAMAGES.

- STEP 1: USING TMP-4 AND RSD 1101.02 (SHEETS 1, 2, 3, 11, AND/OR 12 OF 15), PLACE TEMPORARY PAVEMENT MARKINGS AT THE INTERSECTION OF SR 4982 (LANCASTER HWY) AND SR 4931 (CAROLINA PLACE PKWY).
- STEP 2: A) INSTALL OFF-SITE DETOUR ROUTE SIGNS & ASSEMBLIES FOR THE CLOSING OF SR -L- (SR. 4982, SOUTH POLK ST).
 B) USING ROADWAY STANDARD DRAWING (RSD) NO. 1101.03 (SHEET 1 OF 9), CLOSE -L- FROM STA. 15+00± TO STA. 22+50±, BETWEEN -Y-(SABAL POINT DR) AND -EY1- (MEADOW CREEK LN).
- STEP 3: - AWAY FROM TRAFFIC, REMOVE EXISTING BRIDGE. CONSTRUCT NEW STRUCTURE AND ROADWAY UP TO BUT NOT INCLUDING THE FINAL LAYER OF SURFACE COURSE FROM -L- STA. 15+00± TO -L- STA. 22+50± (SEE ROADWAY PLANS).
 - USING RSD NO. 1101.02 (SHEET 1 OF 15), CONSTRUCT SHOULDER WITH CURB AND GUTTER, AND WEDGE ROADWAY UP TO PROPOSED ELEVATION UP TO BUT NOT INCLUDING FINAL LAYER OF SURFACE COURSE ON -Y-, -EY-, FROM -L- STA. 12+00± TO -L- STA. 15+00±, AND FROM -L- STA. 22+50± TO -L- STA. 25+25± (SEE ROADWAY PLANS). PLACE TEMPORARY PAVEMENT MARKERS AS SHOWN ON FINAL PAVEMENT MARKING PLANS.
 NOTE: UTILIZE DRUMS OR CONES TO MAINTAIN ACCESS TO DRIVEWAYS DURING CONSTRUCTION.
- STEP 4: - REMOVE ALL TRAFFIC CONTROL DEVICES AND OPEN -L- (SR 4982, SOUTH POLK ST) TO THE FINAL TRAFFIC PATTERN. REMOVE ALL OFF-SITE DETOUR SIGNING.
 - USING RSD 1101.02 (SHEETS 1, 2, 3, 11, AND/OR 12 OF 15), MODIFY TEMPORARY PAVEMENT MARKINGS AT THE INTERSECTION OF SR 4982 (LANCASTER HWY) AND SR 4931 (CAROLINA PLACE PKWY) WITH PAINT AS SHOWN ON FINAL PAVEMENT MARKING PLANS OR AS DIRECTED BY THE ENGINEER.
- STEP 5: USING RSD 1101.02 (SHEETS 1, 2, 3, 11, AND/OR 12 OF 15), PLACE THE FINAL SURFACE LAYER, PAVEMENT MARKINGS, AND PAVEMENT MARKERS ON ALL ROADS (SEE ROADWAY PLANS AND FINAL PAVEMENT MARKING PLANS).

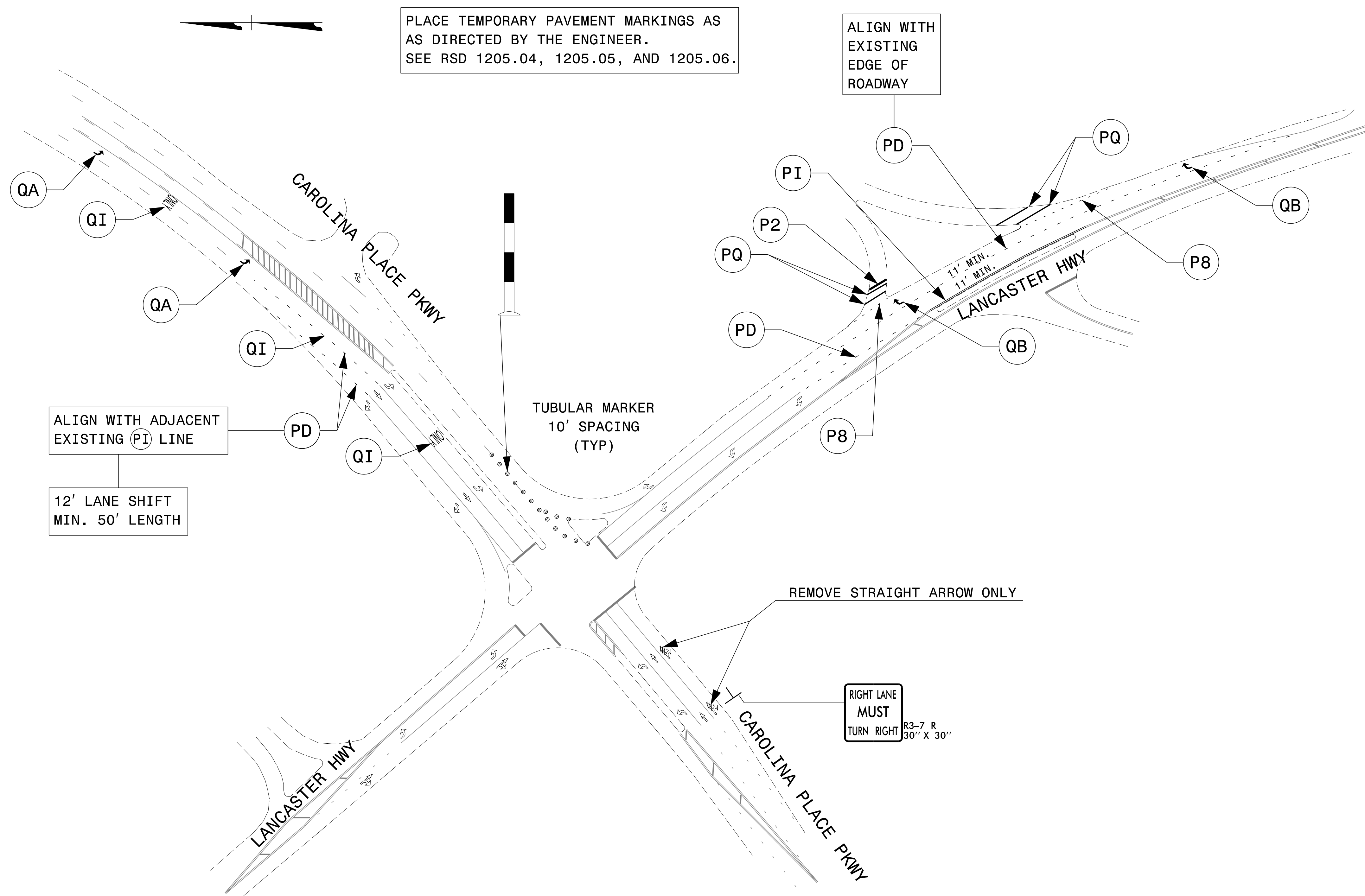


INSTALL 7 DAYS PRIOR TO FULL ROAD CLOSURE

REMOVE 7 DAYS AFTER FULL ROAD CLOSURE

** SEE RSD 1101.03, SHEET 1 OF 9, FOR ADDITIONAL WORK ZONE SIGNS AND LOCATIONS.

APPROVED: J. W. Woolard, Jr. DATE: 6/18/2015			OFF-SITE DETOUR, BARRICADE PLACEMENT, AND PHASING
---	--	--	---



PLACE TEMPORARY PAVEMENT MARKINGS AS DIRECTED BY THE ENGINEER. SEE RSD 1205.04, 1205.05, AND 1205.06.

ALIGN WITH EXISTING EDGE OF ROADWAY

ALIGN WITH ADJACENT EXISTING (PI) LINE

12' LANE SHIFT MIN. 50' LENGTH

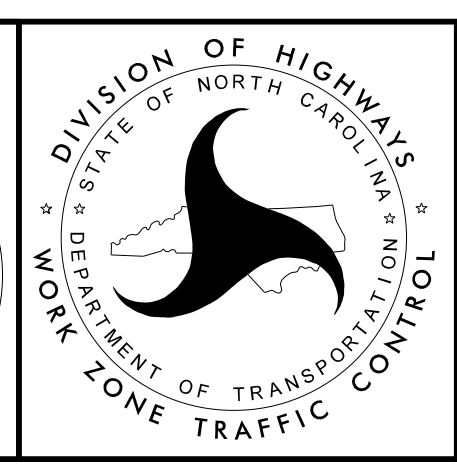
TUBULAR MARKER 10' SPACING (TYP)

REMOVE STRAIGHT ARROW ONLY

RIGHT LANE MUST TURN RIGHT R3-7 R 30" X 30"

PAVEMENT MARKINGS			
P2	WHITE STOPBAR	PQ	WHITE CROSSWALK
PD	3 FT. - 9 FT./SP WHITE MINISKIP	QA	LEFT TURN ARROW
P8	2 FT. - 6 FT./SP WHITE MINISKIP	QB	RIGHT TURN ARROW
PI	YELLOW DOUBLE CENTER	QI	ALPHANUMERIC CHAR.

APPROVED: *J. W. Woolard, Jr.*
 DATE: 6/18/2015



TEMPORARY PAVEMENT MARKING PLAN

6/18/2015
 P:\TIP\Projects-B\B5105\TrafficControl\TCP\B-5105_TC_TMP_04.dgn
 User: shanson