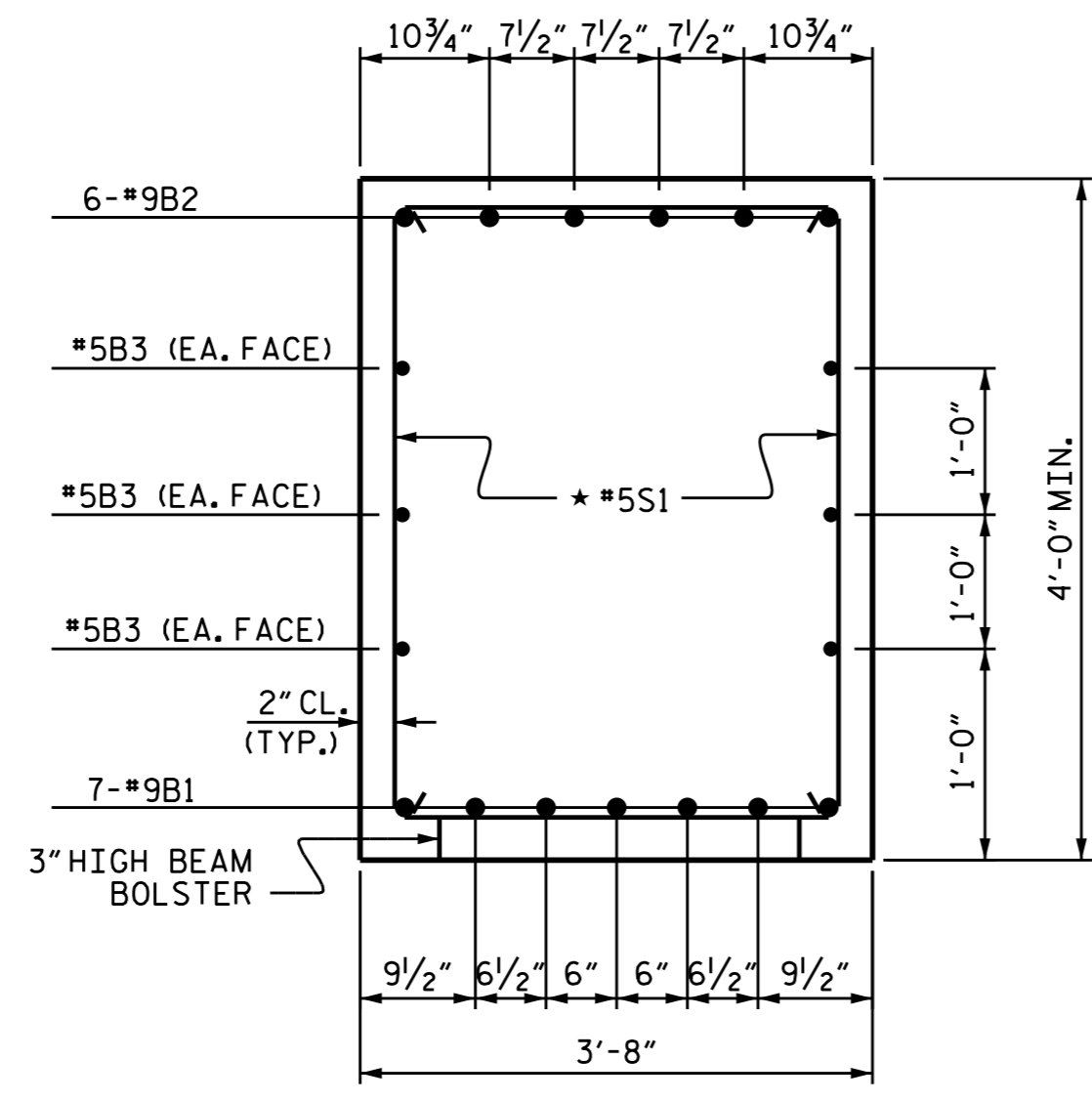
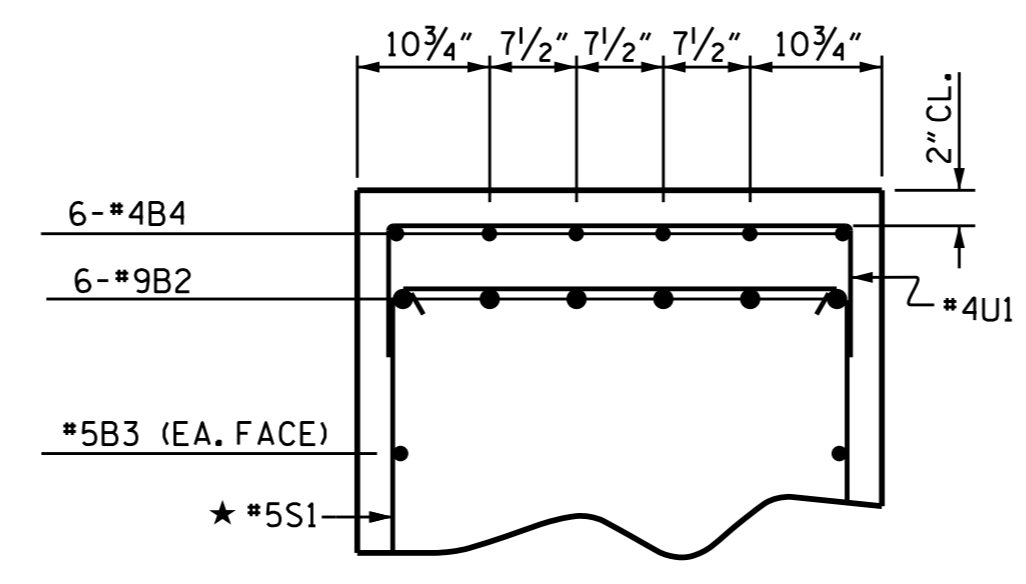


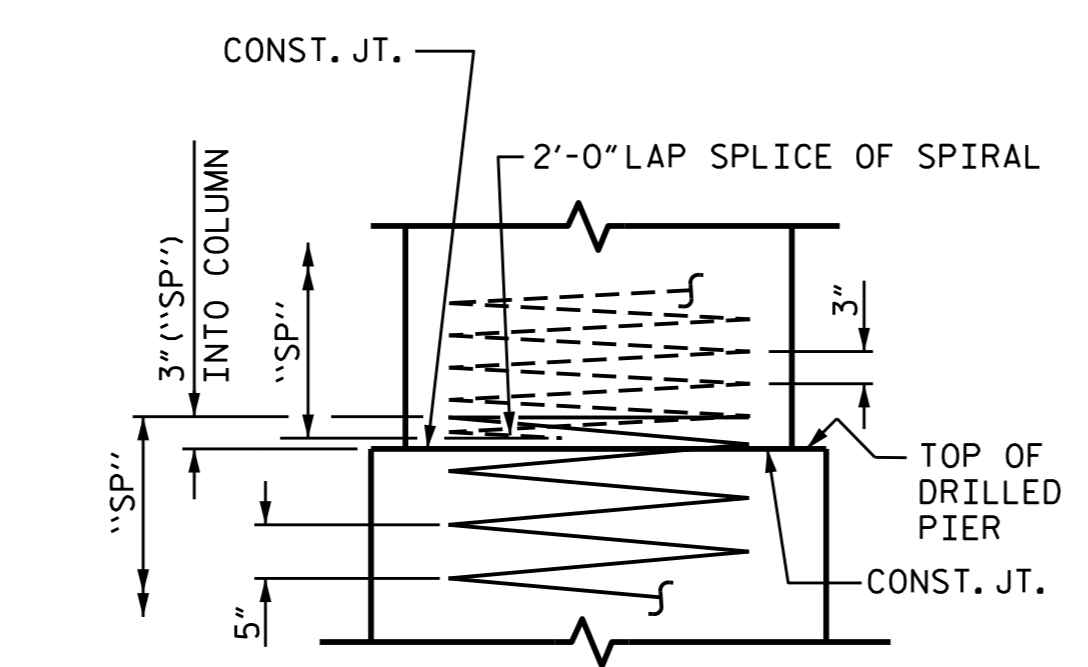
END ELEVATION



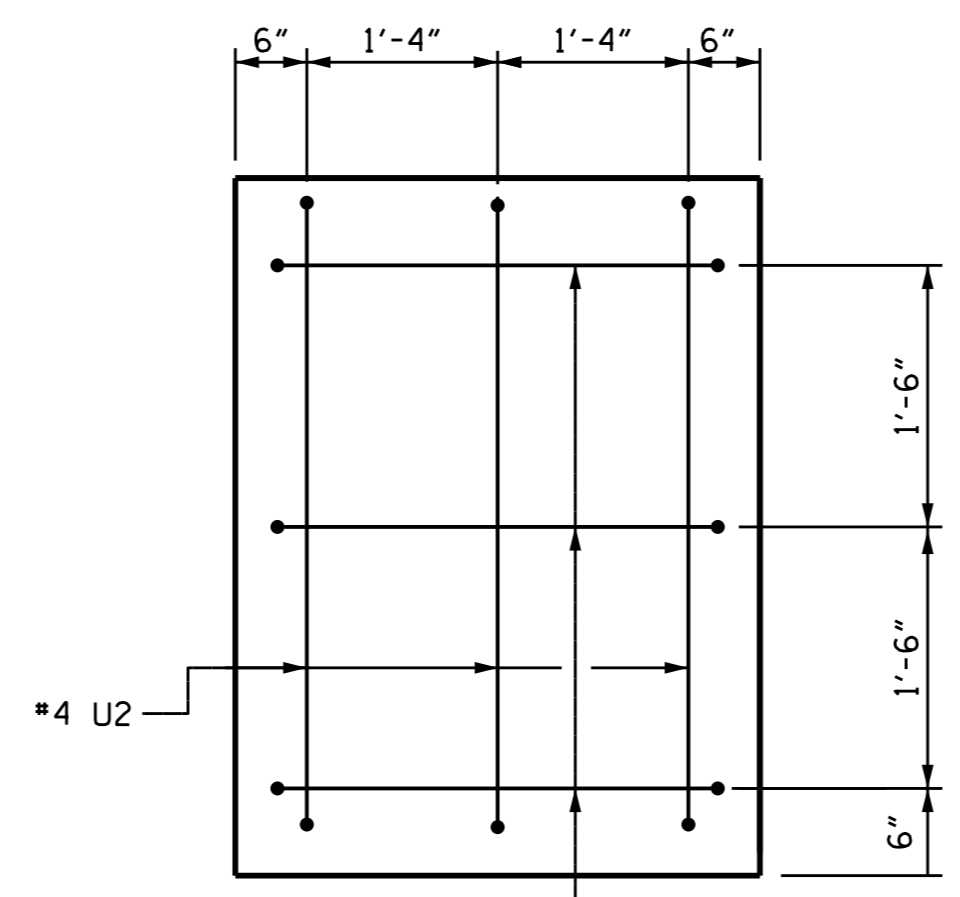
SECTION A-A



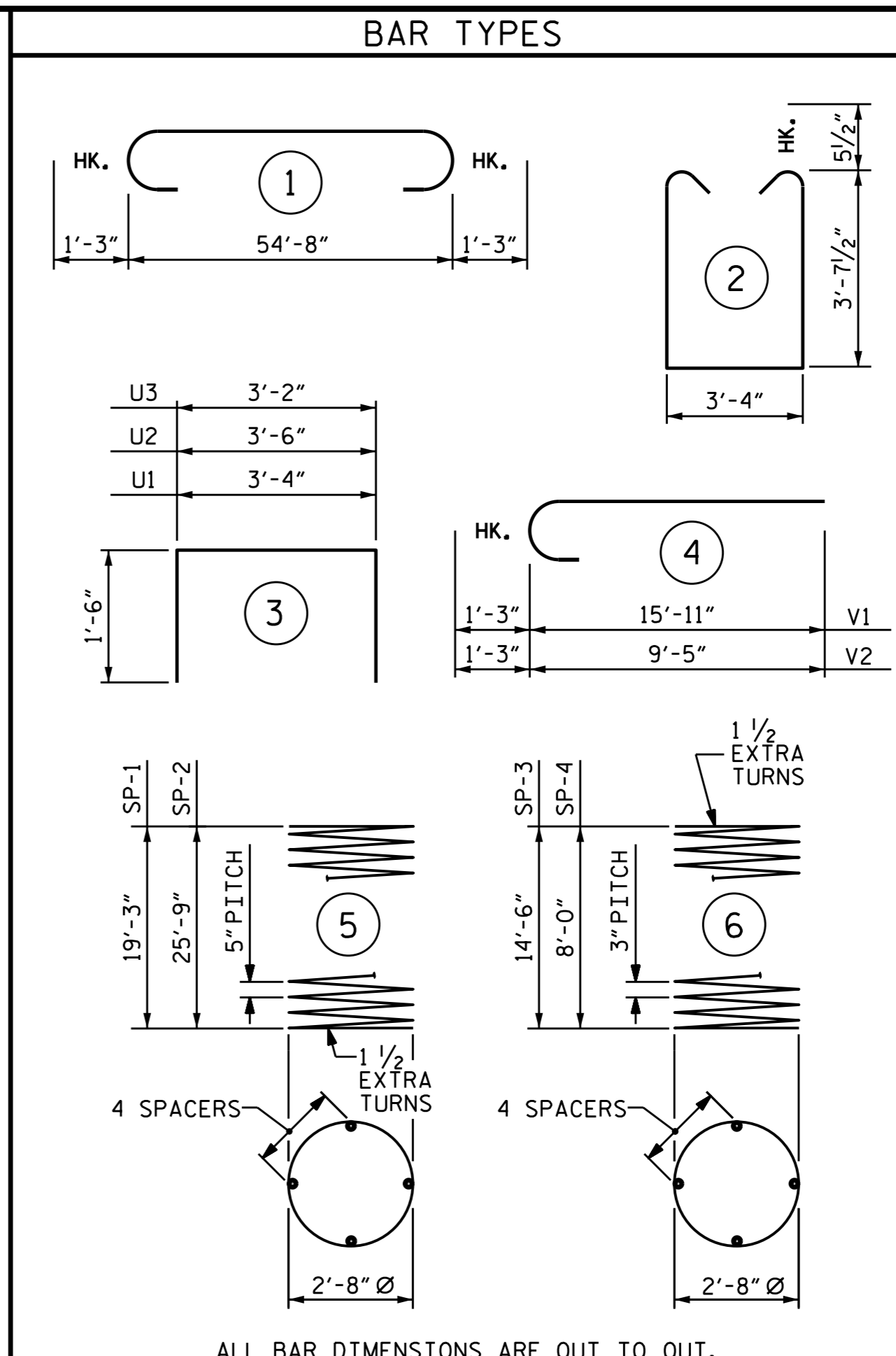
PARTIAL SECTION B-B



CONSTRUCTION JOINT DETAIL



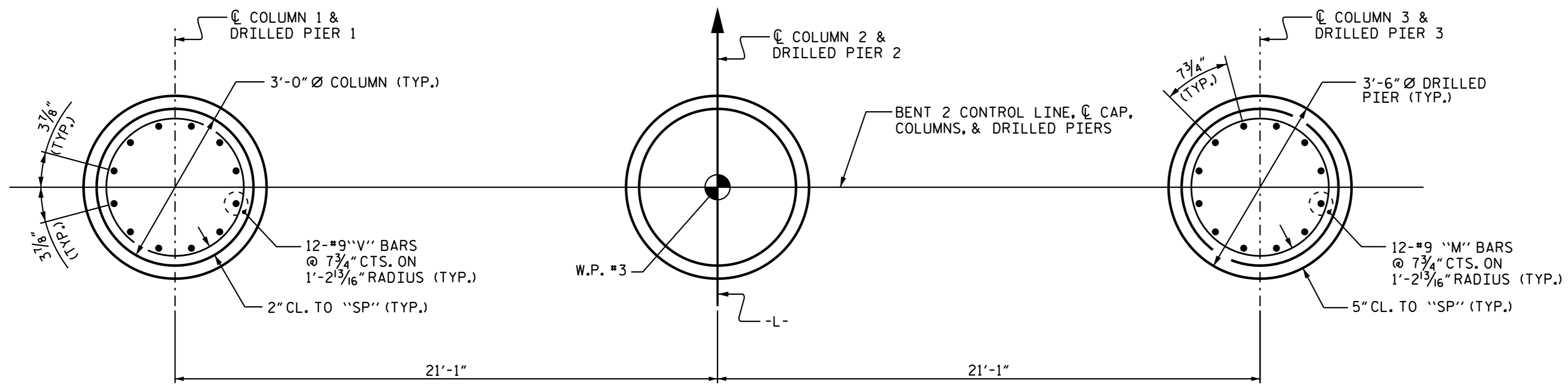
VIEW X-X



ALL BAR DIMENSIONS ARE OUT TO OUT.

BILL OF MATERIAL					
BENT 2					
BAR NO.	SIZE	TYPE	LENGTH	WEIGHT	
B1	7	#9	STR	54'-10"	1305
B2	6	#9	1	57'-2"	1166
B3	6	#5	STR	54'-10"	343
B4	6	#4	STR	13'-5"	54
M1	24	#9	STR	27'-3"	2224
M2	12	#9	STR	33'-9"	1377
S1	64	#5	2	11'-6"	768
U1	46	#4	3	6'-4"	195
U2	6	#4	3	6'-6"	26
U3	6	#4	3	6'-2"	25
V1	24	#9	4	17'-2"	1401
V2	12	#9	4	10'-8"	435
REINFORCING STEEL =				LBS	9,319
SP-1	2	*	5	392'-0"	818
SP-2	1	*	5	521'-3"	544
SP-3	2	**	6	490'-0"	655
SP-4	1	**	6	275'-11"	184
SPIRAL COLUMN REINFORCING STEEL				LBS	2,201
CLASS A CONCRETE					
POUR #2 (COLUMNS)				C.Y.	9.5
POUR #3 (CAP)				C.Y.	31.3
TOTAL CLASS A CONCRETE				C.Y.	40.8
DRILLED PIERS:					
DRILLED PIER CONCRETE					
POUR #1 (DRILLED PIERS)				C.Y.	23.4
3'-6" Ø DRILLED PIERS IN SOIL				LIN. FT.	42.75
3'-6" Ø DRILLED PIERS NOT IN SOIL				LIN. FT.	23.0
PERMANENT STEEL CASING FOR 3'-6" Ø DRILLED PIERS				LIN. FT.	44.66
CSL TUBES				LIN. FT.	281.00

* THE SP-1 AND SP-2 SPIRAL REINFORCING STEEL SHALL BE W31 OR D-31 COLD DRAWN WIRE OR #5 PLAIN OR DEFORMED BAR.
 ** THE SP-3 AND SP-4 SPIRAL REINFORCING STEEL SHALL BE W20 OR D-20 COLD DRAWN WIRE OR #4 PLAIN OR DEFORMED BAR.



PLAN OF DRILLED PIERS & COLUMNS

(DETAILS ARE TYPICAL EACH DRILLED PIER & COLUMN)

DRAWN BY : R.P. PATEL DATE : 3-20-14
 CHECKED BY : K.D. LAYNE DATE : 3-25-14
 DESIGN ENGINEER OF RECORD : R.P. PATEL DATE : 6-2-14



PROJECT NO. B-5105
 MECKLENBURG COUNTY
 STATION: 20+08.00 -L-
 SHEET 2 OF 2

STATE OF NORTH CAROLINA DEPARTMENT OF TRANSPORTATION RALEIGH					
SUBSTRUCTURE					
BENT 2					
REVISIONS					SHEET NO.
NO.	BY:	DATE:	NO.	BY:	DATE:
1			3		
2			4		
					TOTAL SHEETS
					38