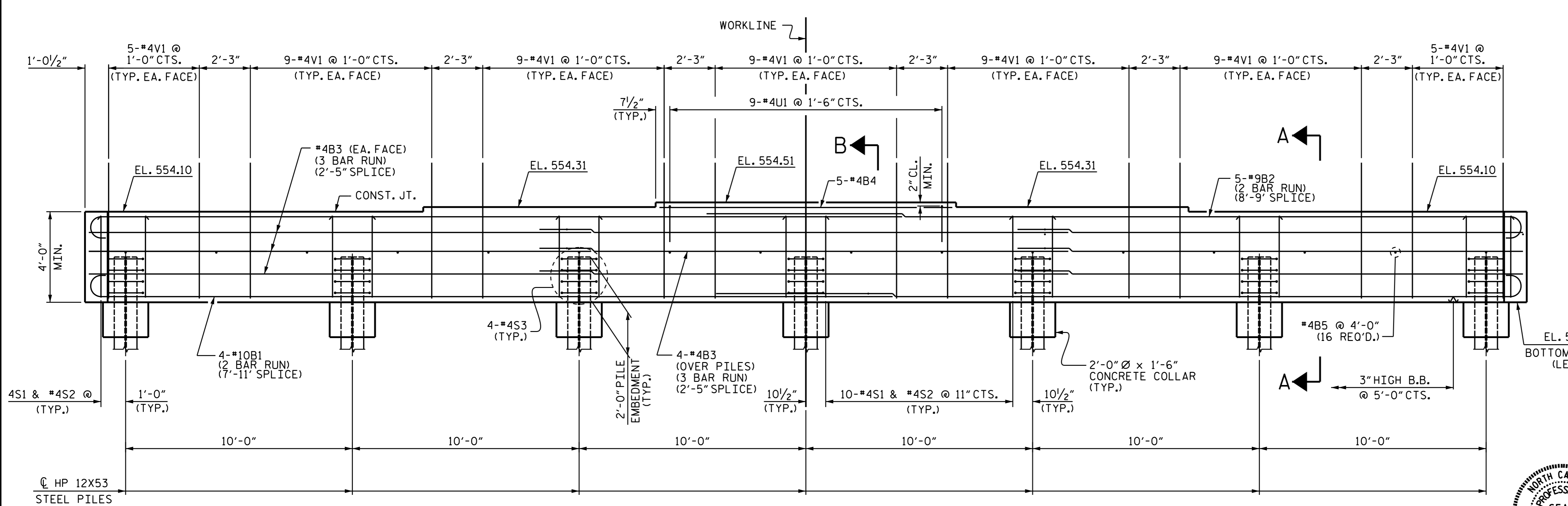
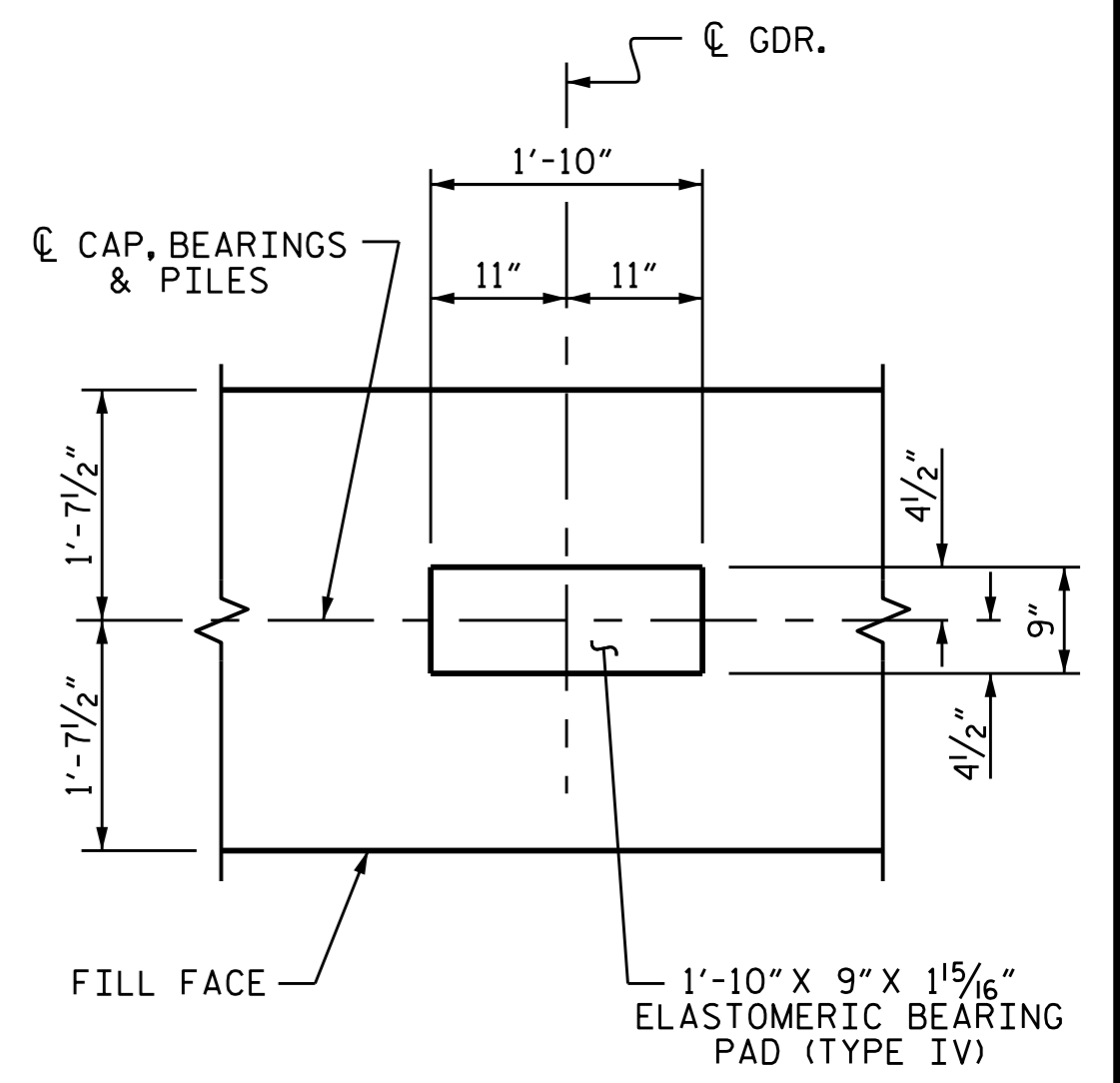


PLAN



ELEVATION

NOTES
 THE UPPER PORTION OF THE WINGS SHALL BE POURED WITH THE SUPERSTRUCTURE. CONCRETE AND REINFORCING STEEL QUANTITIES ARE INCLUDED IN THE SUPERSTRUCTURE BILL OF MATERIALS. FOR DETAILS, SEE SUPERSTRUCTURE PLANS.
 THE TOP SURFACE OF THE END BENT CAP AND WINGS, EXCEPT THE BEARING AREA, SHALL BE RAKED TO A DEPTH OF 1/4".



DETAIL "A"

(DETAILS AND DIMENSIONS ARE TYPICAL FOR EACH BEARING)

PROJECT NO. B-5105
 MECKLENBURG COUNTY
 STATION: 20+08.00 -L-

SHEET 1 OF 3



STATE OF NORTH CAROLINA
 DEPARTMENT OF TRANSPORTATION
 RALEIGH
 SUBSTRUCTURE
 INTEGRAL
 END BENT 1

DRAWN BY : R. P. PATEL DATE : 9-17-13
 CHECKED BY : R. L. CHESSON DATE : 10-7-13
 DESIGN ENGINEER OF RECORD : R. P. PATEL DATE : 3-18-14

11-JUN-2015 07:59
 R:\Structures\Plans\B5105.sd.E1.01.dgn
 dadavenport

REVISIONS						SHEET NO.	
NO.	BY:	DATE:	NO.	BY:	DATE:	S-26	
1			3			TOTAL SHEETS	
2			4			38	