

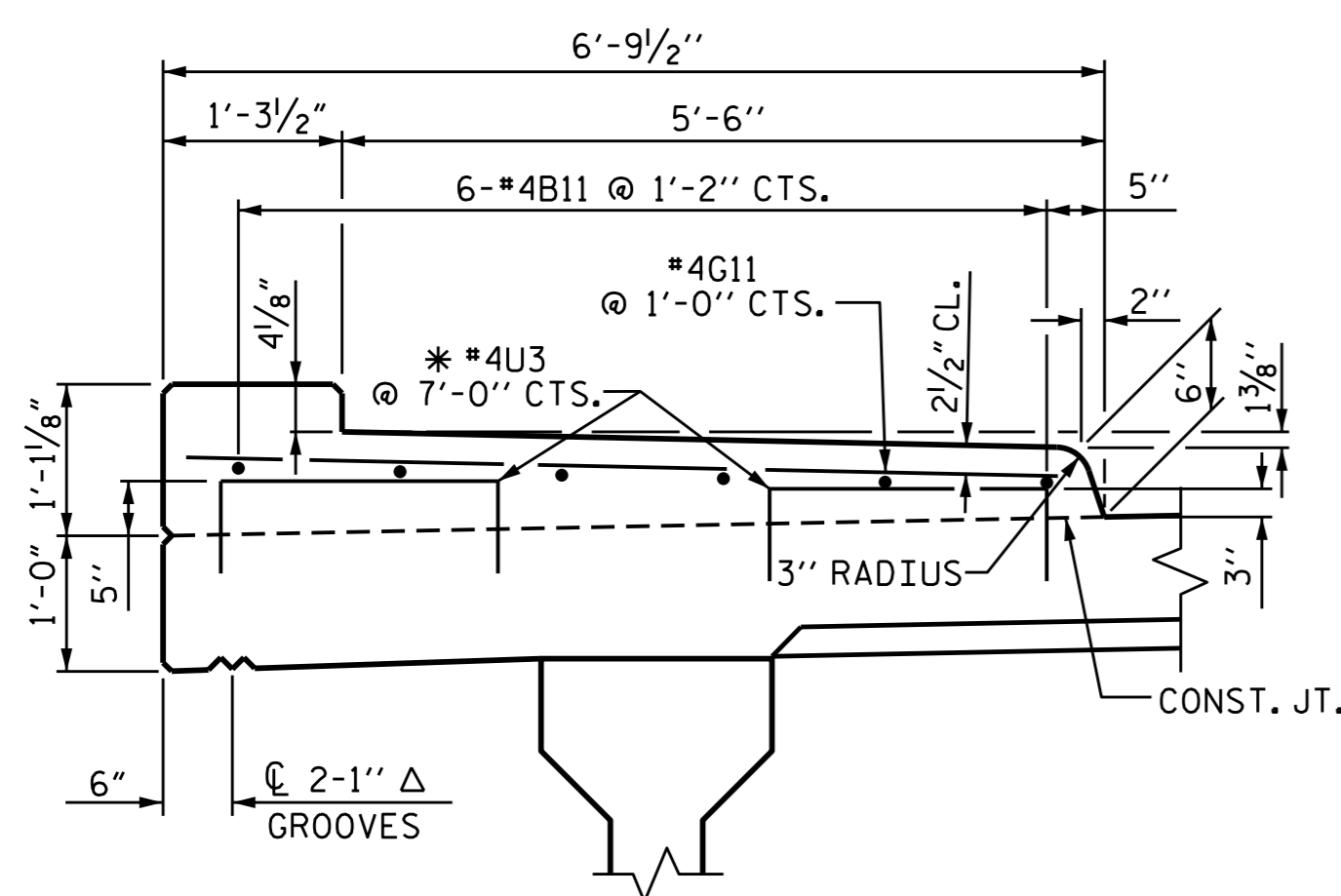
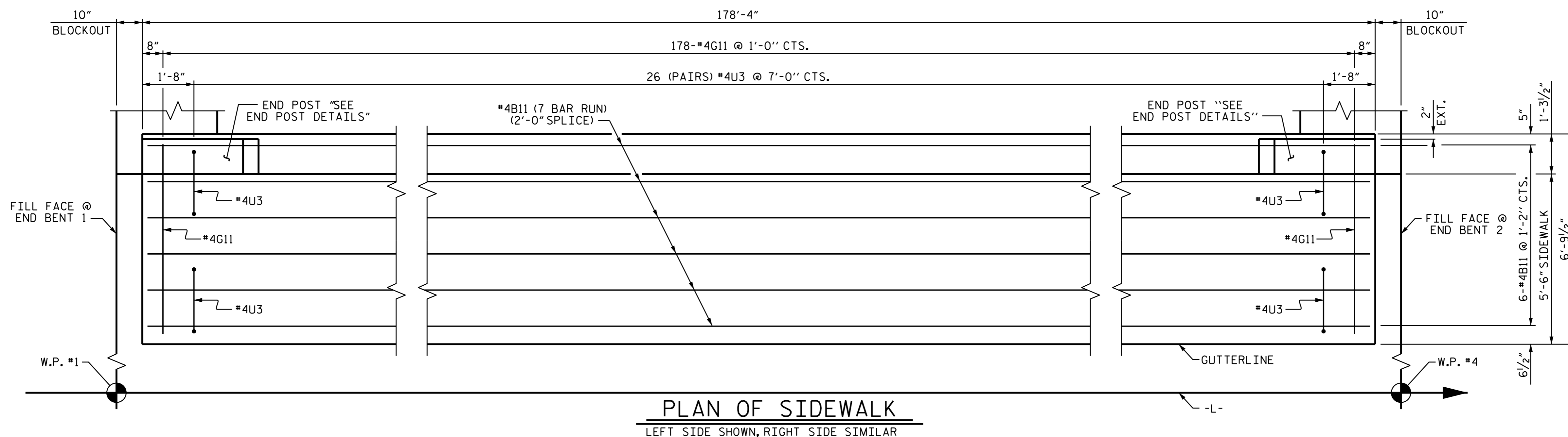
NOTES

PAYMENT FOR SIDEWALK AND END POSTS SHALL BE INCLUDED IN UNIT PRICE FOR "REINFORCED CONCRETE DECK SLAB". SEE "SUPERSTRUCTURE BILL OF MATERIAL" SHEET.

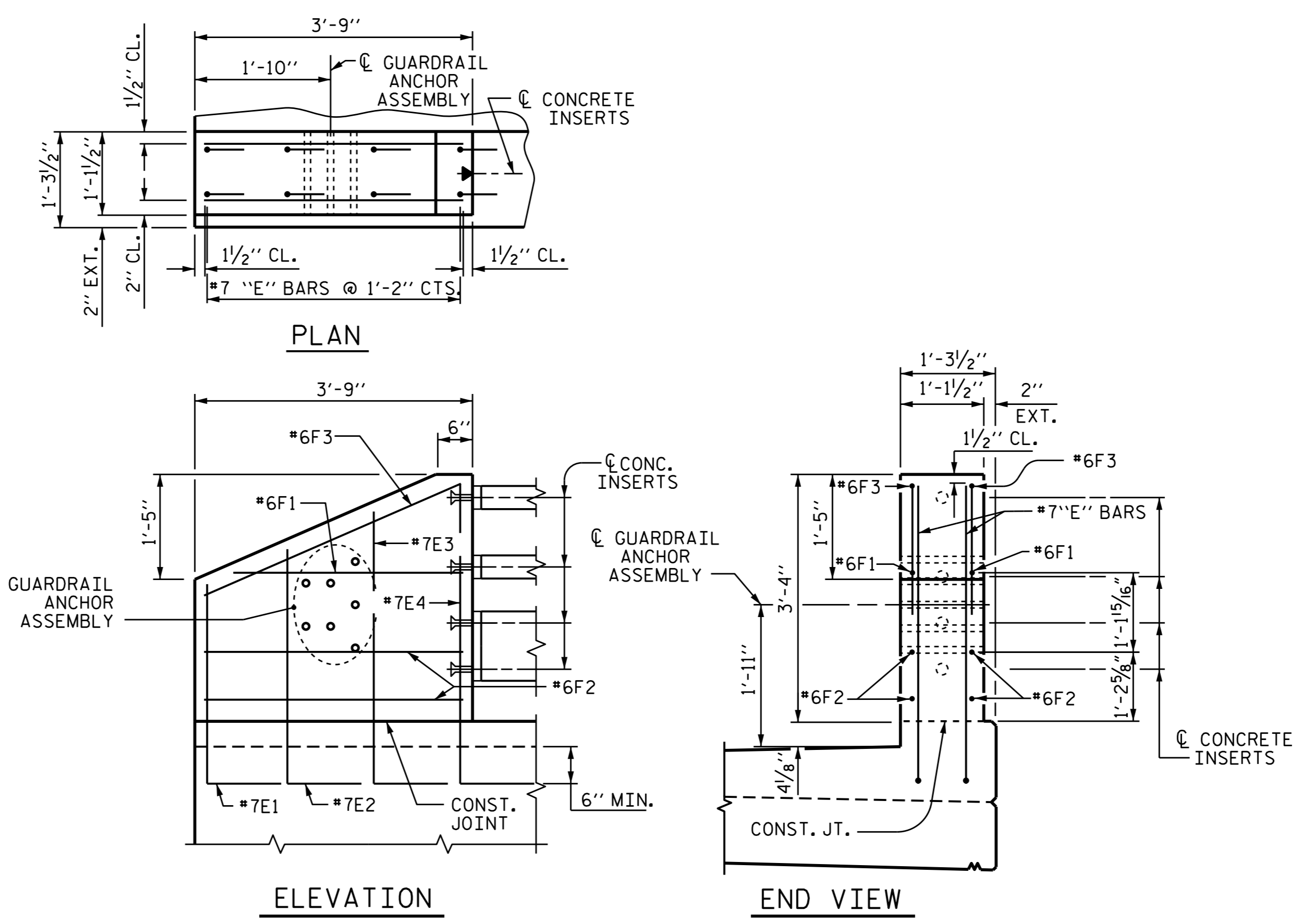
SIDEWALK IN A CONTINUOUS UNIT SHALL NOT BE CAST UNTIL ALL SLAB CONCRETE IN THE UNIT HAS BEEN CAST AND HAS REACHED A MINIMUM COMPRESSIVE STRENGTH OF 3,000 PSI.

ALL REINFORCING STEEL IN SIDEWALKS AND END POSTS SHALL BE EPOXY COATED.

GROOVED CONTRACTION JOINTS, 1/2" IN DEPTH, SHALL BE TOOLED IN ALL EXPOSED FACES OF THE SIDEWALK IN ACCORDANCE WITH ARTICLE 825-10(B) OF THE STANDARD SPECIFICATIONS. THE CONTRACTION JOINTS SHALL BE LOCATED AT A SPACING OF 8 FT. TO 10 FT. BETWEEN EXPANSION JOINTS. NO CONTRACTION JOINT WILL BE REQUIRED FOR SEGMENTS LESS THAN 10 FT. IN LENGTH.



SECTION THROUGH SIDEWALK
* U3 BARS MAY BE PUSHED INTO GREEN CONCRETE AFTER SPAN HAS BEEN SCREEDED OFF.



PROJECT NO. B-5105
MECKLENBURG COUNTY
STATION: 20+08.00 -L-

STATE OF NORTH CAROLINA
DEPARTMENT OF TRANSPORTATION
RALEIGH
SUPERSTRUCTURE
SIDEWALK AND
END POST DETAILS



DRAWN BY: K.D. LAYNE DATE: 9-05-13
CHECKED BY: M. K. BEARD DATE: 10-08-13

11-JUN-2015 07:59
R:\Structures\Plans\B5105.sd.SW.01.dgn
dadavenport

REVISIONS						SHEET NO.
NO.	BY:	DATE:	NO.	BY:	DATE:	5-11
1			3			TOTAL SHEETS
2			4			38