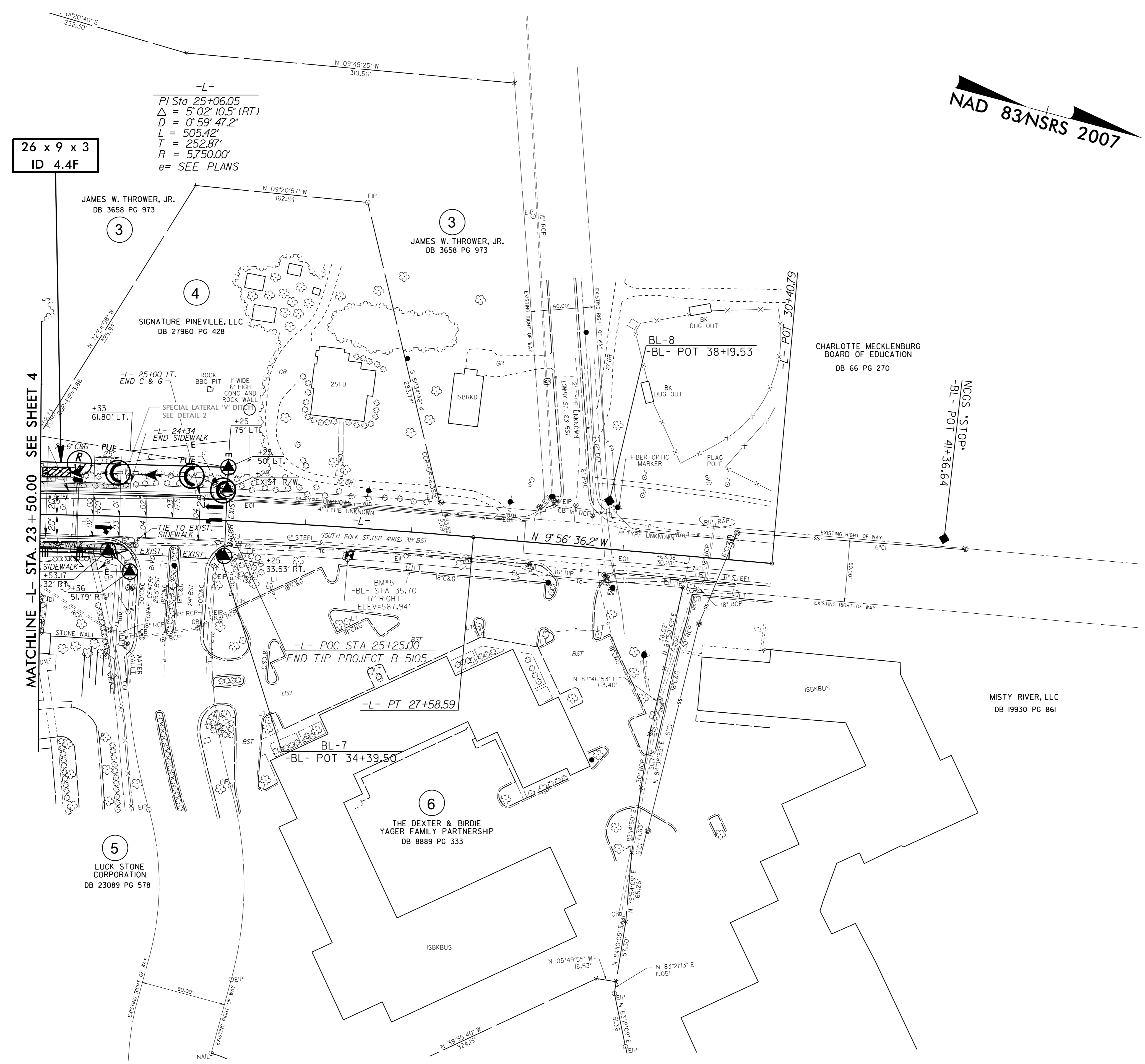


| | |
|-------------------------|---------------------|
| PROJECT REFERENCE NO. | SHEET NO. |
| B-5105 | EC-7/CONST.5 |
| RW SHEET NO. | |
| ROADWAY DESIGN ENGINEER | HYDRAULICS ENGINEER |

5/14/99
R:\ENVIRO\2015\15049
R:\ENVIRO\2015\15049\B5105_EC-psd\05.dgn
DATE: 04/27/2015



26 x 9 x 3
ID 4.4F

-L-
PI Sta 25+06.05
 $\Delta = 5^{\circ}02'10.5''$ (RT)
 $D = 0^{\circ}59'47.2''$
 $L = 505.42'$
 $T = 252.87'$
 $R = 5750.00'$
e= SEE PLANS

NAD 83 NSRS 2007

MATCHLINE -L- STA. 23 + 50.00 SEE SHEET 4

NCGS "STOP"
-BL- POT 41+36.64

3
JAMES W. THROWER, JR.
DB 3658 PG 973

3
JAMES W. THROWER, JR.
DB 3658 PG 973

4
SIGNATURE PINEVILLE, LLC
DB 27960 PG 428

CHARLOTTE MECKLENBURG
BOARD OF EDUCATION
DB 66 PG 270

5
LUCK STONE
CORPORATION
DB 23089 PG 578

6
THE DEXTER & BIRDIE
YAGER FAMILY PARTNERSHIP
DB 8889 PG 333

MISTY RIVER, LLC
DB 19930 PG 861