

JAMES W. THROWER, JR.  
DB 3658 PG 973

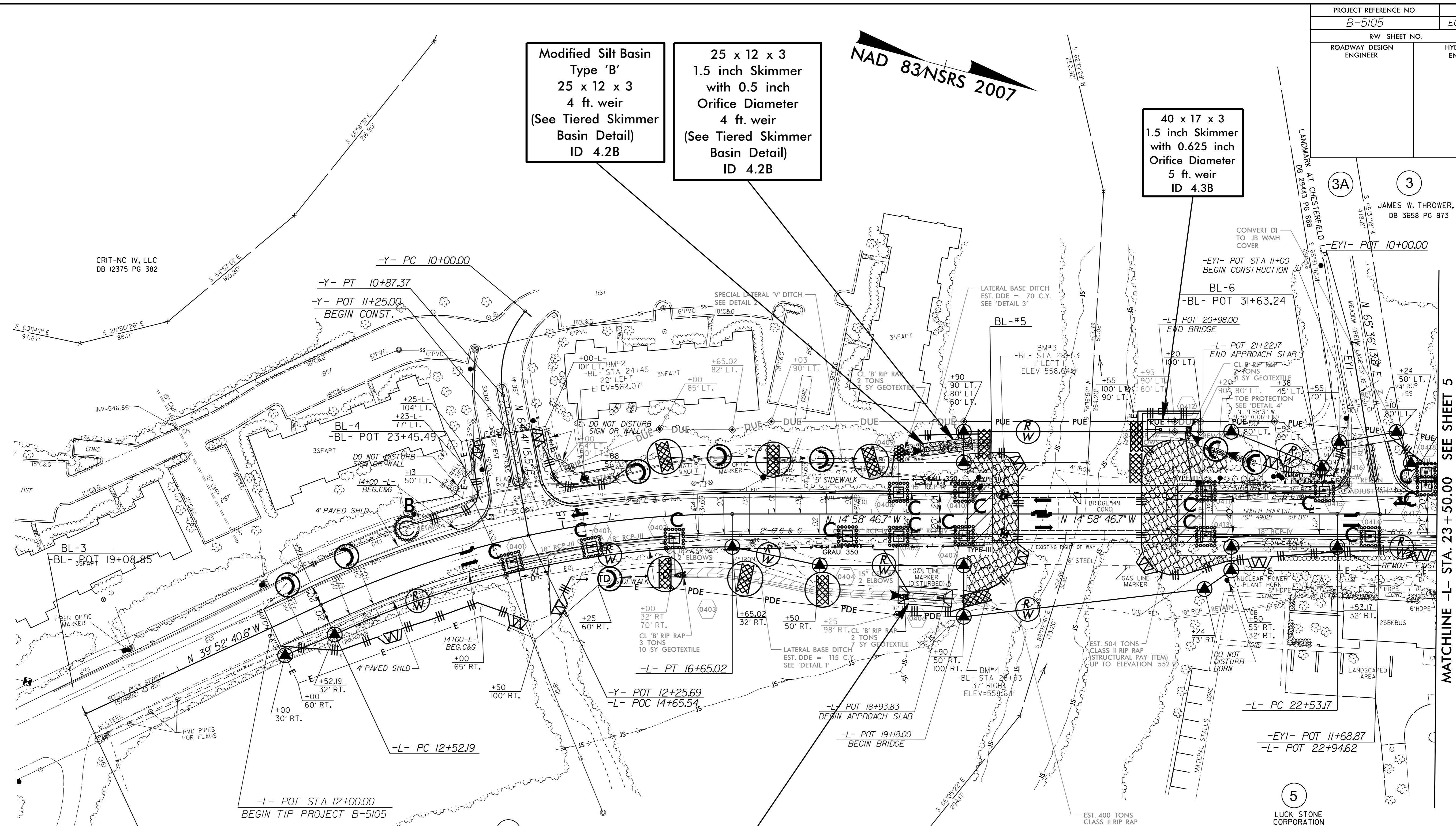
Modified Silt Basin  
Type 'B'  
25 x 12 x 3  
4 ft. weir  
(See Tiered Skimmer  
Basin Detail)  
ID 4.2B

25 x 12 x 3  
1.5 inch Skimmer  
with 0.5 inch  
Orifice Diameter  
4 ft. weir  
(See Tiered Skimmer  
Basin Detail)  
ID 4.2B

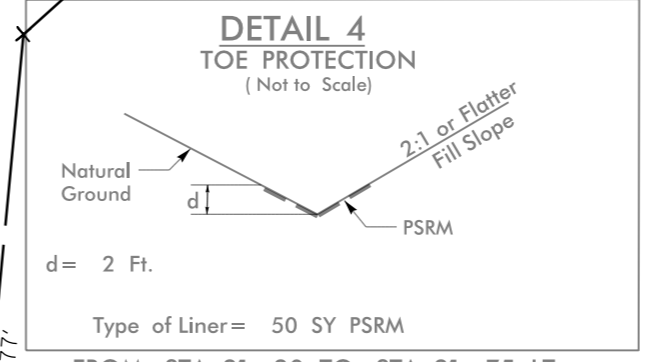
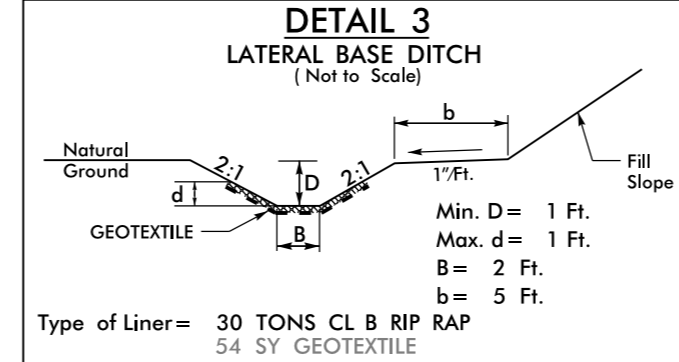
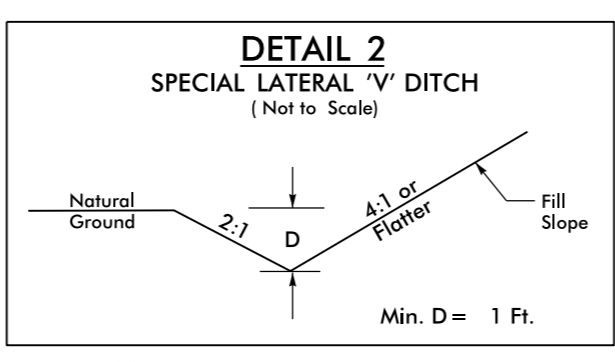
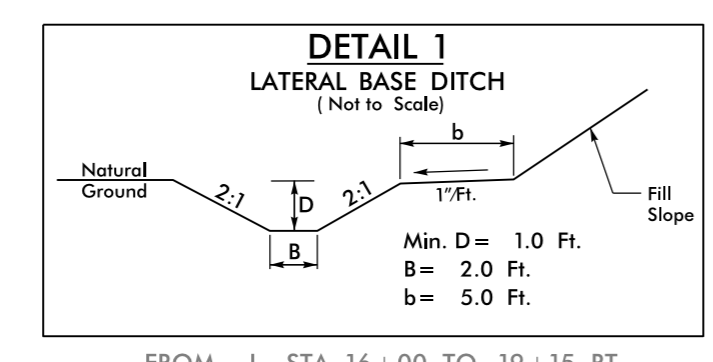
40 x 17 x 3  
1.5 inch Skimmer  
with 0.625 inch  
Orifice Diameter  
5 ft. weir  
ID 4.3B

52 x 17 x 3  
1.5 inch Skimmer  
with 0.75 inch  
Orifice Diameter  
7 ft. weir  
ID 4.1B

NAD 83 NSRS 2007



MATCHLINE -L- STA. 23 + 50.00 SEE SHEET 5



NOTE:  
UTILIZE TEMPORARY SEDIMENT BASIN OR SPECIAL STILLING  
BASIN(S) AS STILLING BASIN WHERE APPLICABLE.

5/14/99  
R:\E:\enviro\proj\B5105\_EC.psh04.dgn  
21-APR-2015 15:46