

**This electronic collection of documents is provided  
for the convenience of the user  
and is Not a Certified Document –**

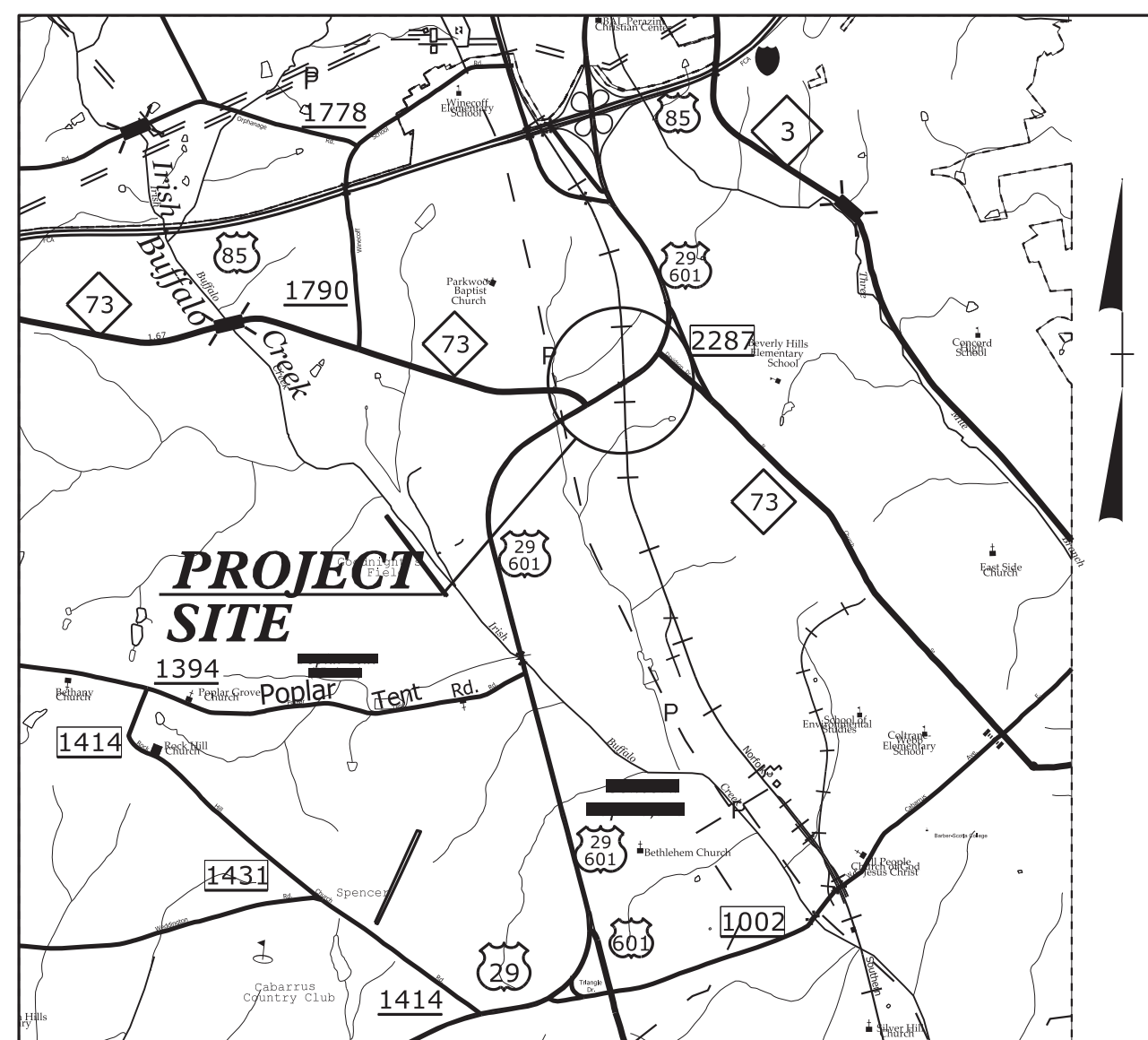
**The documents contained herein were originally issued  
and sealed by the individuals whose names and license  
numbers appear on each page, on the dates appearing  
with their signature on that page.**

**This file or an individual page  
shall not be considered a certified document.**

09/08/2015

TIP PROJECT: B-5136

See Sheet 1-A For Index of Sheets



VICINITY MAP

THIS PROJECT IS WITHIN THE MUNICIPAL BOUNDARY OF THE CITY OF CONCORD

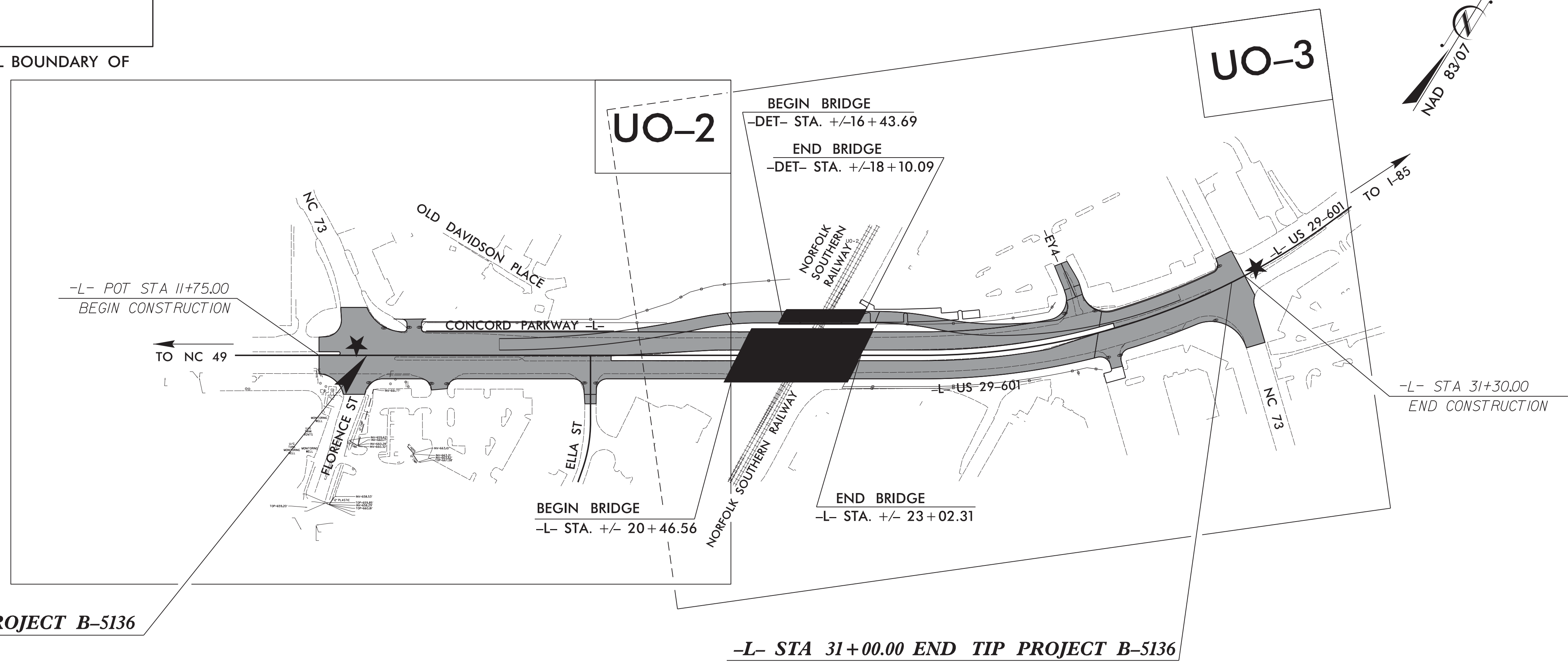
STATE OF NORTH CAROLINA DIVISION OF HIGHWAYS

UTILITIES BY OTHERS PLANS CABARRUS COUNTY

LOCATION: BRIDGES 66 AND 69 OVER NORFOLK SOUTHERN RAILROAD ON US 29 /US 601

TYPE OF WORK: POWER AND COMMUNICATIONS RELOCATION

Table with T.I.P. NO. B-5136 and SHEET NO. UO-1

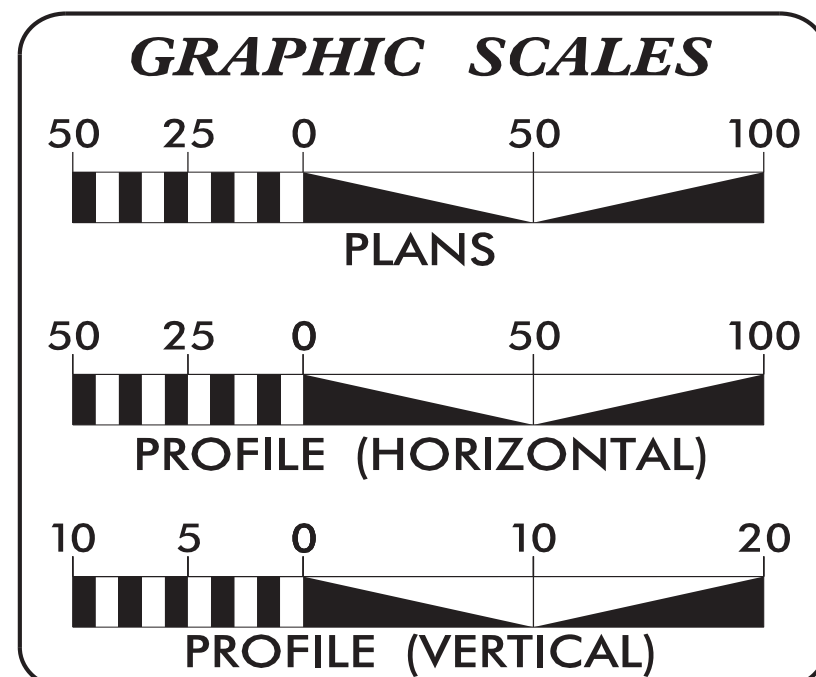


-L- STA 12+75.00 BEGIN TIP PROJECT B-5136

-L- STA 31+00.00 END TIP PROJECT B-5136

CLEARING ON THIS PROJECT SHALL BE PERFORMED TO THE LIMITS ESTABLISHED BY METHOD III

TRAFFIC SIGNAL



INDEX OF SHEETS table with columns for SHEET NO. and DESCRIPTION.

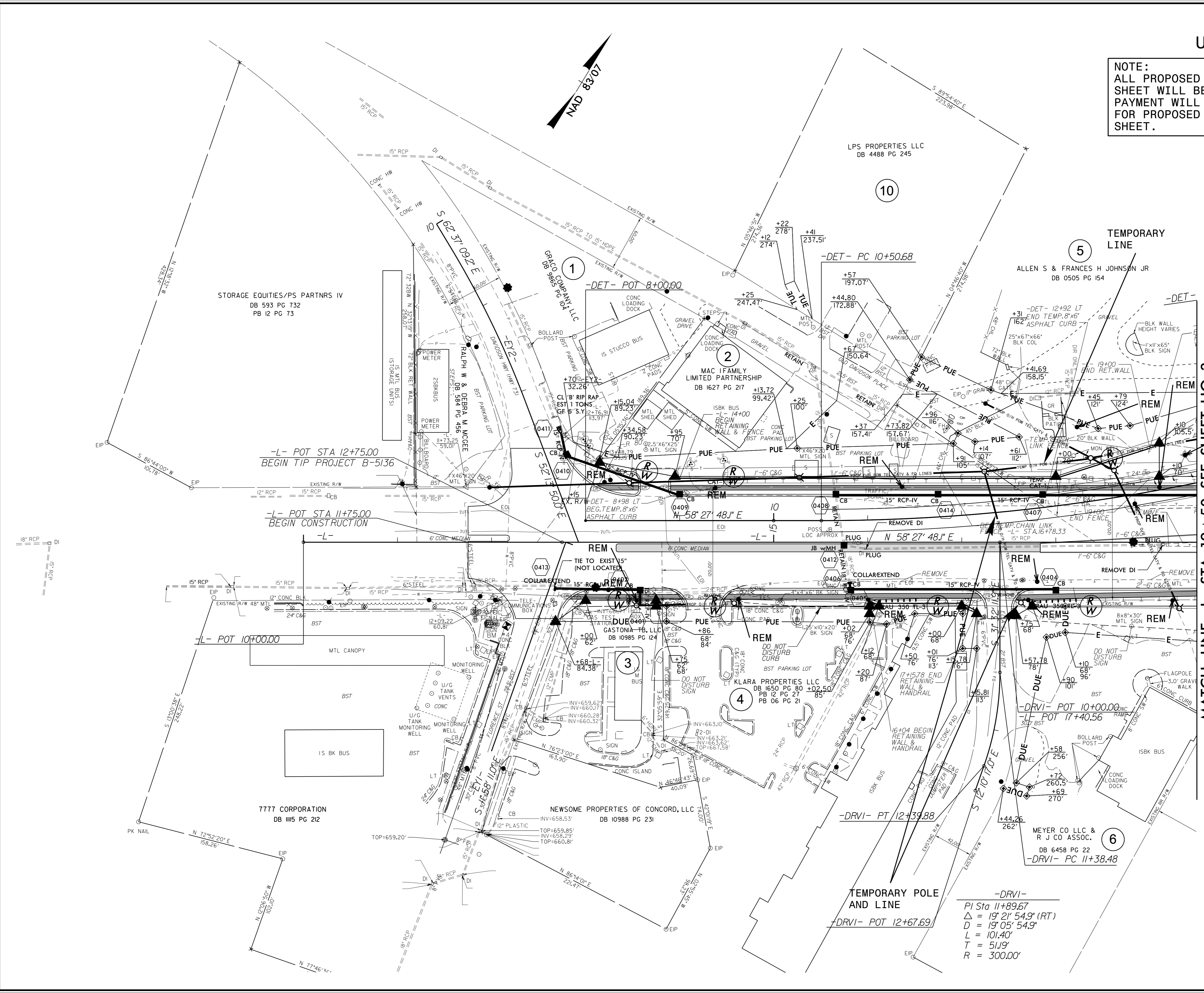
UTILITY OWNERS ON PROJECT table listing utility owners and their services.

Prepared in the office of Division of Highways Utilities Unit Utilities Engineering, including contact information for Roger Worthington, Carl Barclay, and James E. Swinson.

25-FEB-2015 14:25 R:\Utilities\Engineering\UB0\Proj\UO\B-5136-Ut-fsh\_U01.psh.dgn

UTILITIES BY OTHERS

NOTE:  
ALL PROPOSED UTILITY WORK SHOWN ON THIS SHEET WILL BE DONE BY OTHERS. NO PAYMENT WILL BE MADE TO THE CONTRACTOR FOR PROPOSED UTILITY WORK SHOWN ON THIS SHEET.



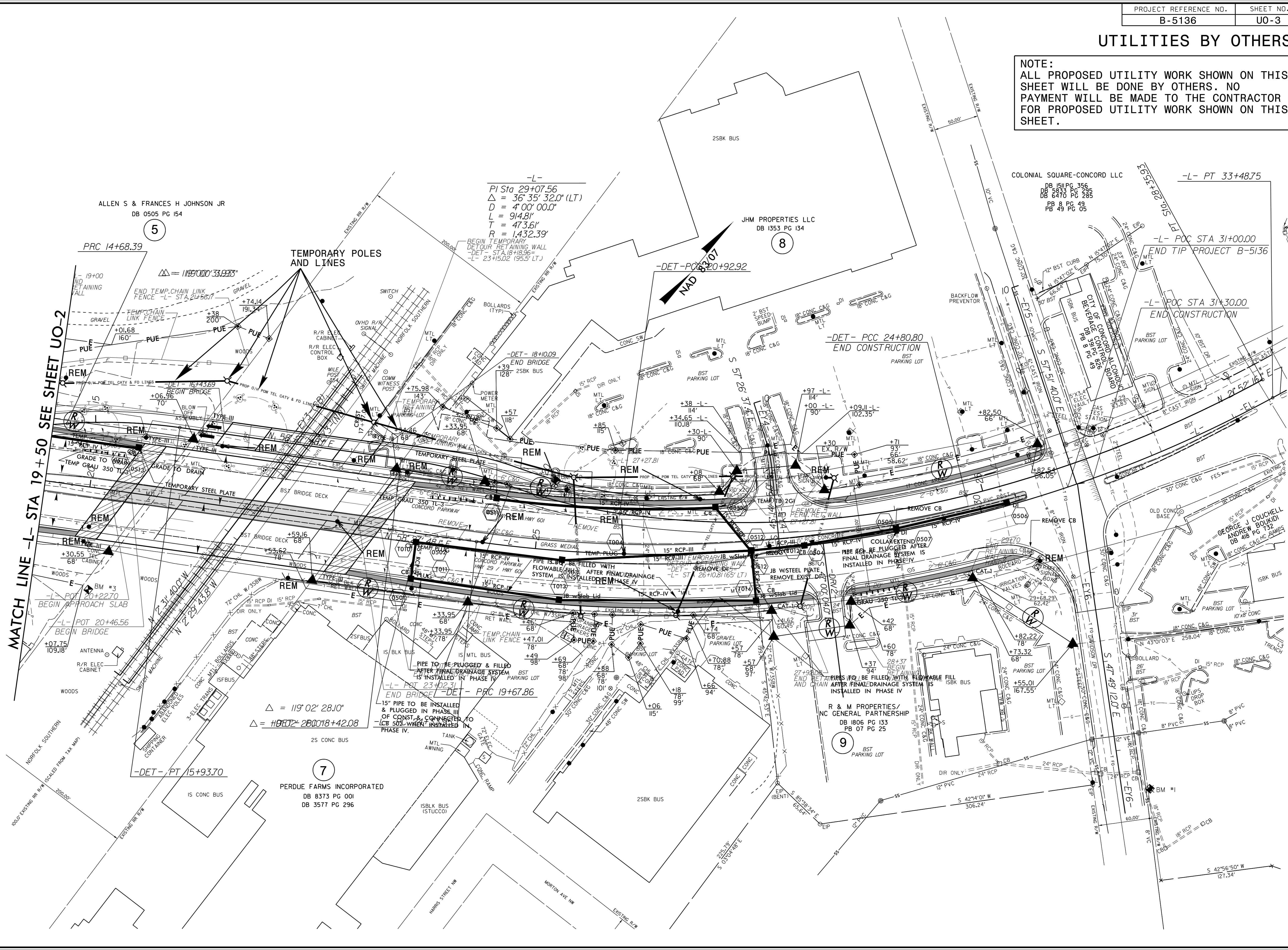
MATCH LINE -L- STA 19 + 50 SEE SHEET UO-3

-DRVI-  
PI Sta 11+89.67  
Δ = 19° 21' 54.9" (RT)  
D = 19' 05" 54.9"  
L = 101.40'  
T = 511.9'  
R = 300.00'

5/14/99  
25-FEB-2015 14:23  
p-o-j\UD\B-5136\_Ut\_4\_UO2\_psh.dgn

### UTILITIES BY OTHERS

**NOTE:**  
 ALL PROPOSED UTILITY WORK SHOWN ON THIS SHEET WILL BE DONE BY OTHERS. NO PAYMENT WILL BE MADE TO THE CONTRACTOR FOR PROPOSED UTILITY WORK SHOWN ON THIS SHEET.



MATCH LINE -L- STA 19+50 SEE SHEET UO-2

5/14/99  
 25-FEB-2015 14:30 p-oj\UD\B-5136\_Ut-5\_U03-psd.dgn