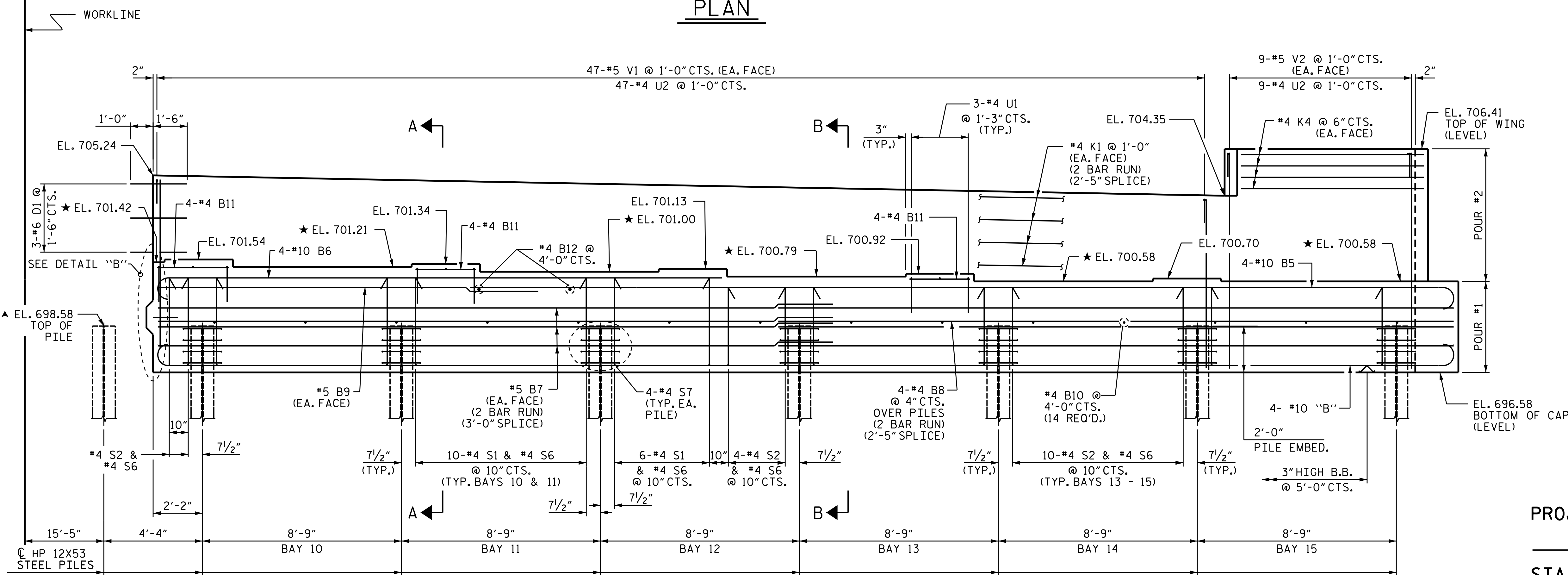


PLAN

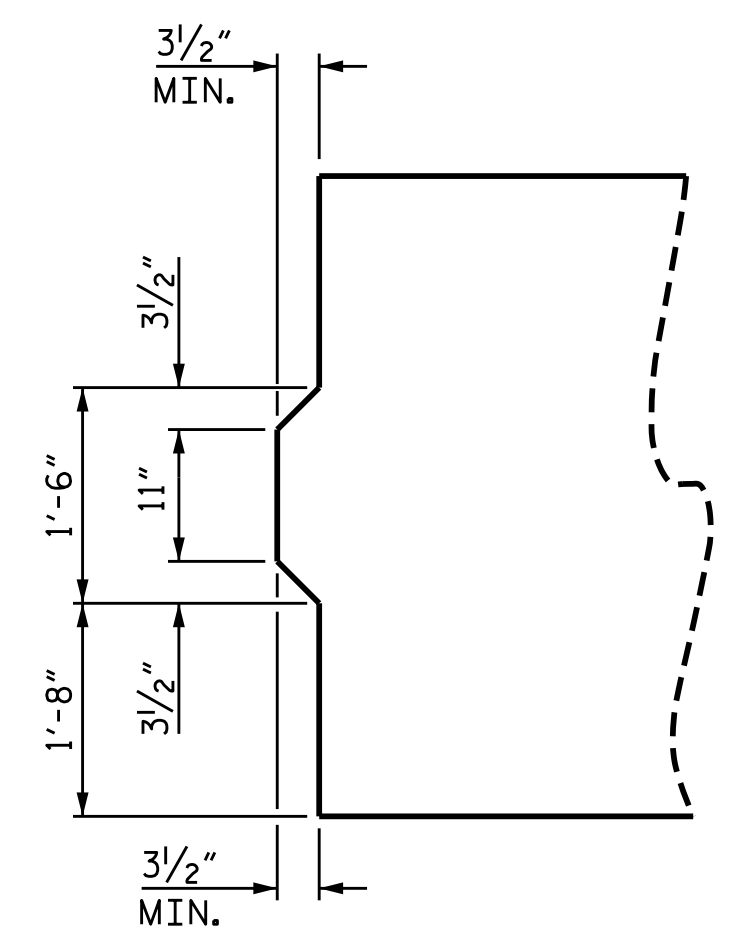


ELEVATION

▲ DRIVE END PILE WITH STAGE I
 ★ ELEVATIONS BETWEEN BRIDGE SEAT BUILDUPS ARE SHOWN AT THIS POINT (TYP.)

NOTES

- STIRRUPS AND "U" BARS IN CAP MAY BE SHIFTED AS NECESSARY TO CLEAR ANCHOR BOLTS.
- BACKWALL SHALL BE PLACED BEFORE APPLYING THE EPOXY PROTECTIVE COATING.
- THE TOP SURFACE OF THE END BENT CAP EXCEPT THE BRIDGE SEAT BUILDUPS SHALL BE SLOPED TRANSVERSELY FROM THE FILL FACE TO THE BACK FACE AT THE RATE OF 2%.
- THE TOP SURFACE AREAS OF THE END BENT CAPS SHALL BE CURED IN ACCORDANCE WITH THE STANDARD SPECIFICATIONS EXCEPT THE MEMBRANE CURING COMPOUND METHOD SHALL NOT BE USED.
- FOR MSE RETAINING WALLS, SEE SPECIAL PROVISIONS.

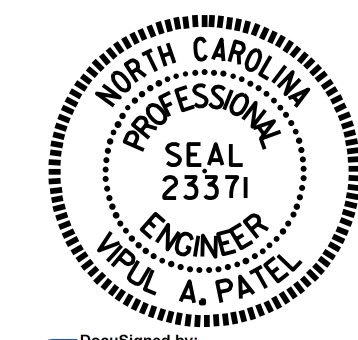


DETAIL "B"

PROJECT NO. B-5136
CABARRUS COUNTY
 STATION: 21+74.92 -L-

SHEET 1 OF 5

STATE OF NORTH CAROLINA
 DEPARTMENT OF TRANSPORTATION
 RALEIGH
 SUBSTRUCTURE
 END BENT 2
 STAGE I



REVISIONS						SHEET NO. S-68
NO.	BY:	DATE:	NO.	BY:	DATE:	
1			3			TOTAL SHEETS 75
2			4			

DRAWN BY : M.E. GILES DATE : 8/13/14
 CHECKED BY : M.K. BEARD DATE : 10/21/14
 DESIGN ENGINEER OF RECORD: H.A. LOCKLEAR DATE : 10/21/14