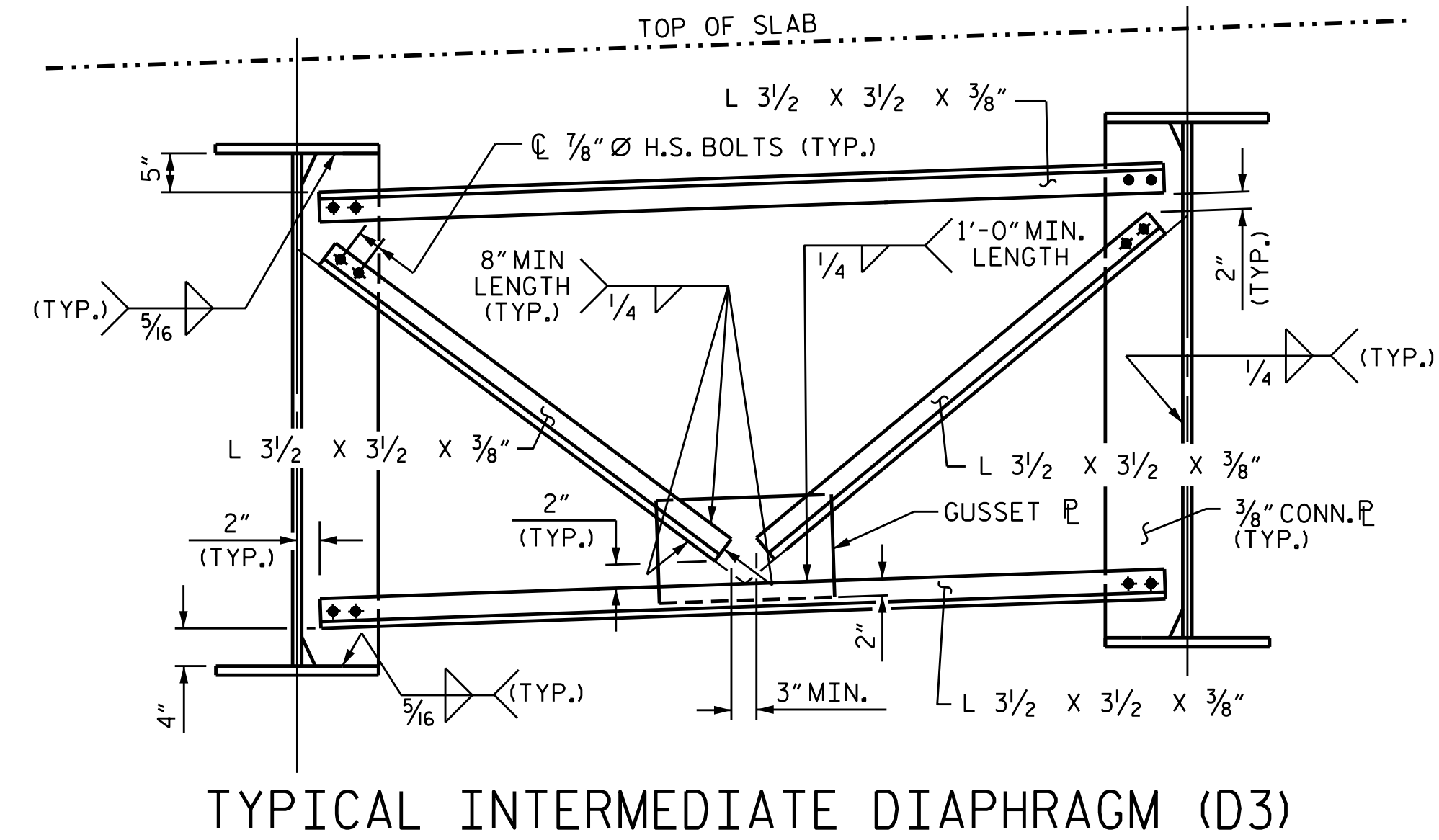
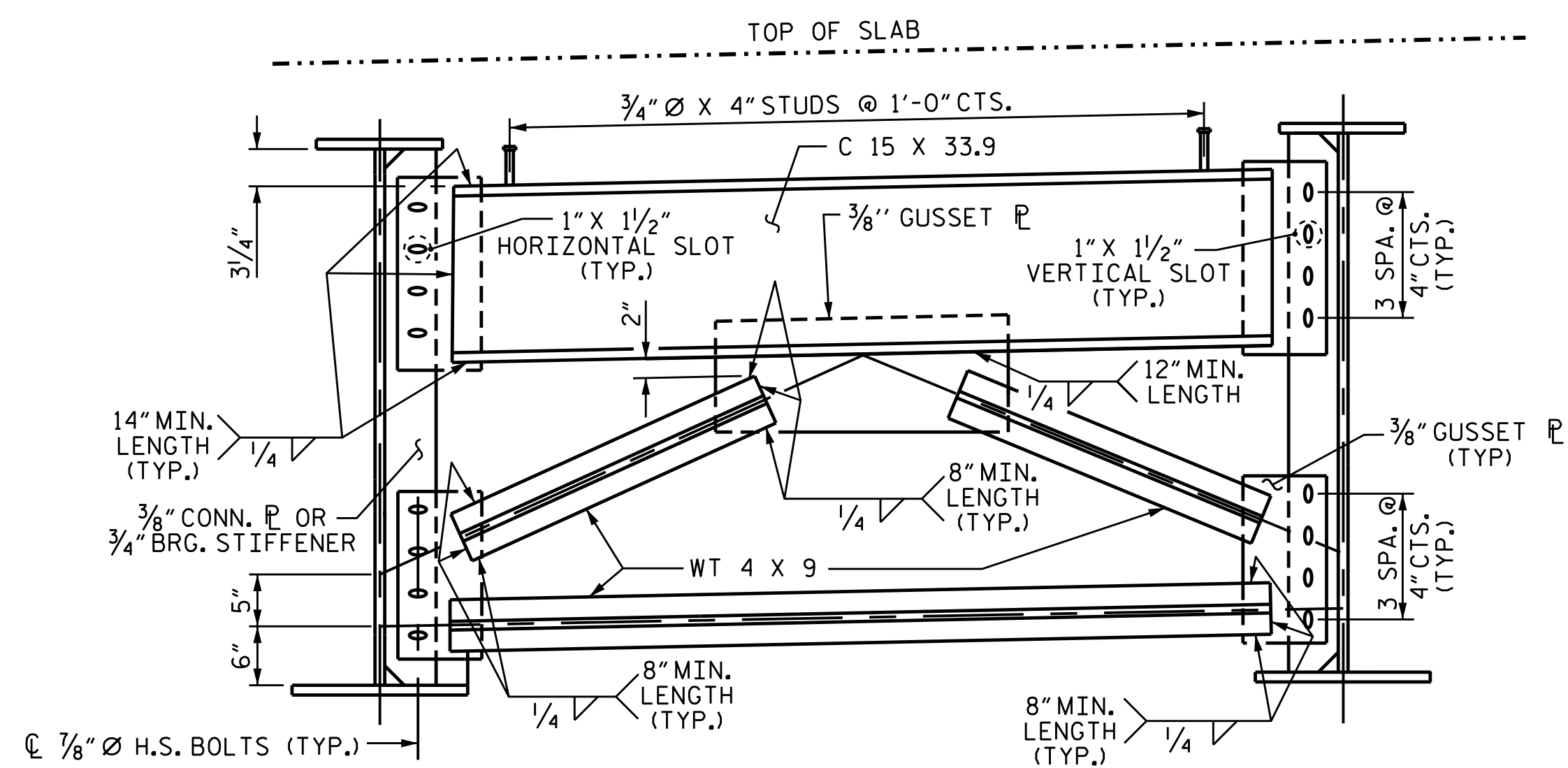


**BENT DIAPHRAGM (D1)**

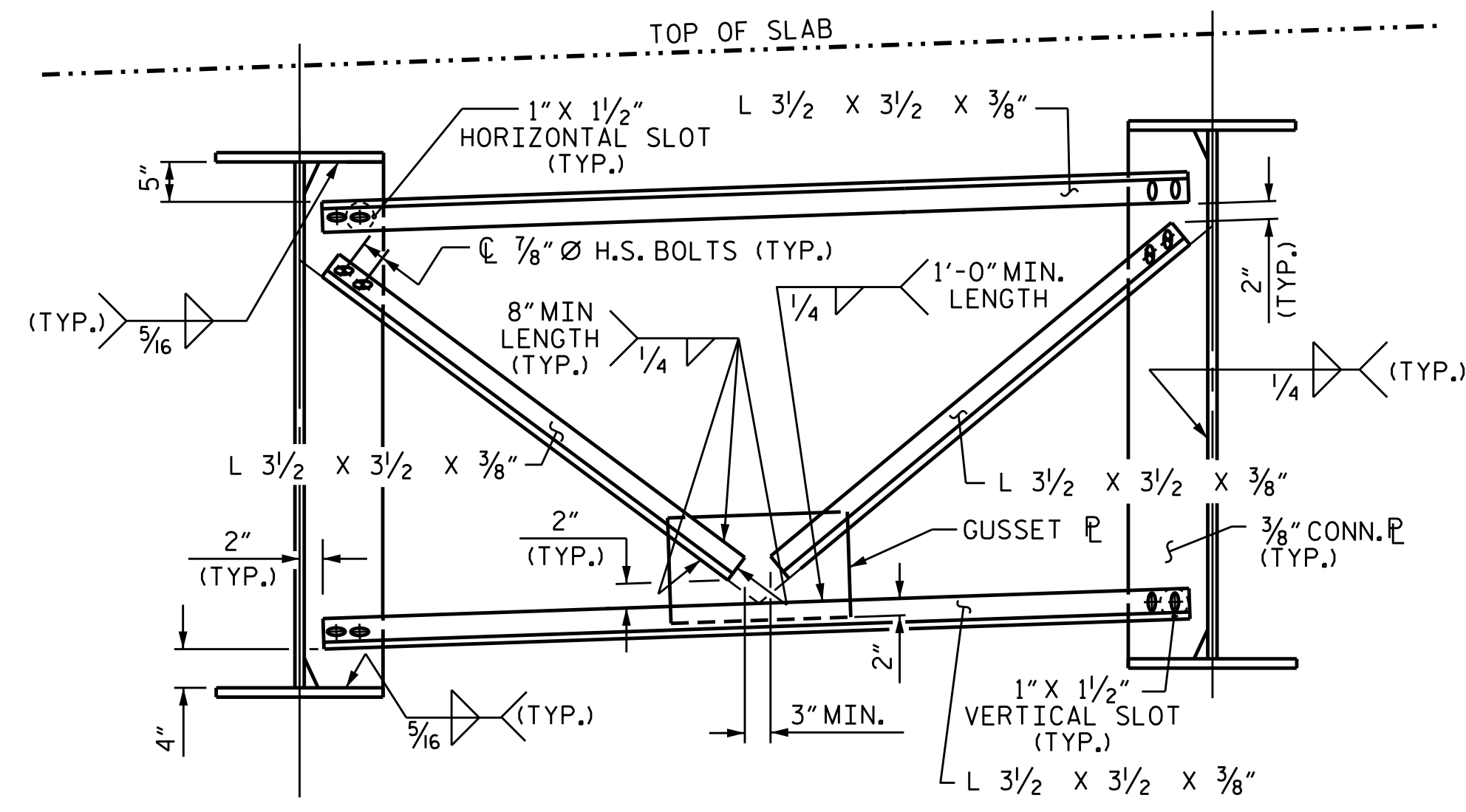


**TYPICAL INTERMEDIATE DIAPHRAGM (D3)**



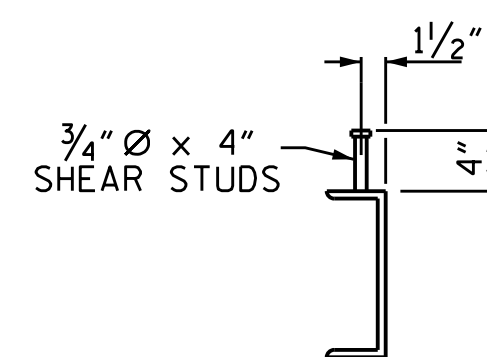
**BENT DIAPHRAGM CLOSURE POUR (D2)**

NUTS ON BOLTS FOR CONNECTING DIAPHRAGM TO CONNECTOR PLATE SHALL BE LEFT LOOSE FOR PURPOSE OF ADJUSTMENT UNTIL BOTH SIDES OF SLAB HAVE BEEN POURED.



**TYPICAL INTERMEDIATE DIAPHRAGM CLOSURE POUR (D4)**

NUTS ON BOLTS FOR CONNECTING DIAPHRAGM TO CONNECTOR PLATE SHALL BE LEFT LOOSE FOR PURPOSE OF ADJUSTMENT UNTIL BOTH SIDES OF SLAB HAVE BEEN POURED.



**BENT DIAPHRAGM SHEAR STUD DETAILS**

PROJECT NO. B-5136  
CABARRUS COUNTY  
 STATION: 21+74.92 -L-

SHEET 2 OF 3

STATE OF NORTH CAROLINA  
 DEPARTMENT OF TRANSPORTATION  
 RALEIGH  
 SUPERSTRUCTURE  
 STRUCTURAL STEEL  
 DETAILS

SPAN B

REVISIONS						SHEET NO.
NO.	BY:	DATE:	NO.	BY:	DATE:	TOTAL SHEETS
1			3			75
2			4			



DocuSigned by:  
 vipul a patel  
 1C157DE150454719/2015

DRAWN BY: T. H. CARROLL DATE: 5/30/14  
 CHECKED BY: H. A. LOCKLEAR DATE: 10/6/14  
 DESIGN ENGINEER OF RECORD: G. W. DICKEY DATE: \_\_\_\_\_