

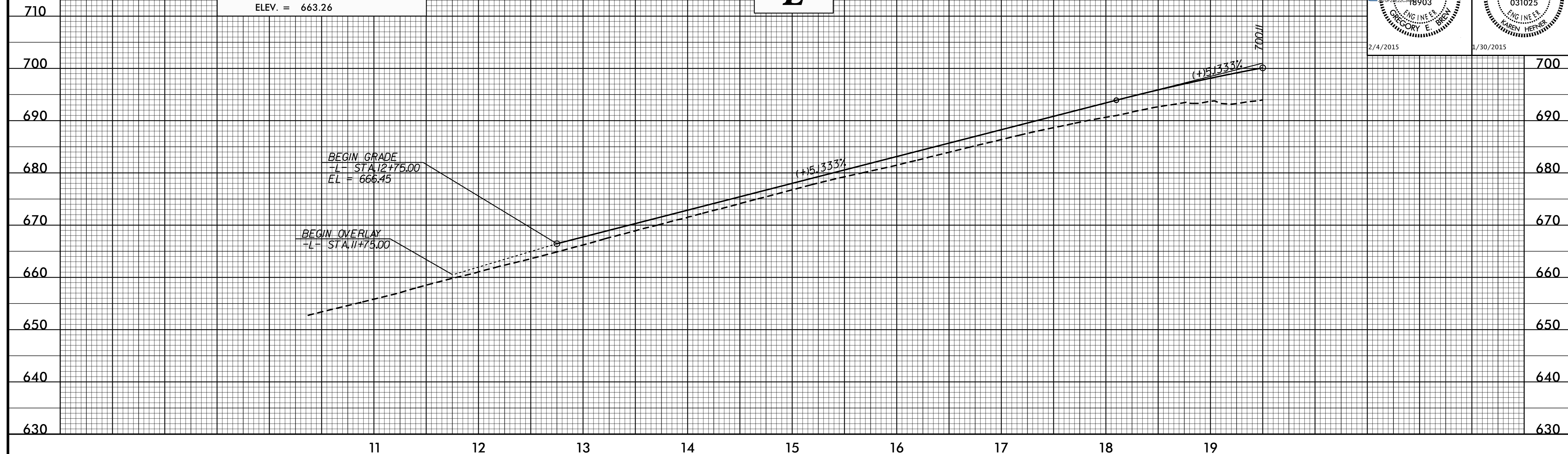
5/28/99

SEE SHEETS 4 & 5 FOR PLANS OF -L-

PROJECT REFERENCE NO. B-5136	SHEET NO. 8
ROADWAY DESIGN ENGINEER GREGORY E. BREWSTER PROFESSIONAL SEAL 18903	HYDRAULICS ENGINEER KAREN HEFFNER PROFESSIONAL SEAL 031025
2/4/2015	1/30/2015

BM-4 RR SPIKE SET IN BASE 24" OAK
NORTH 615032 EAST 1520642
89.10' RT OF -L- STA. 12+16.13
ELEV. = 663.26

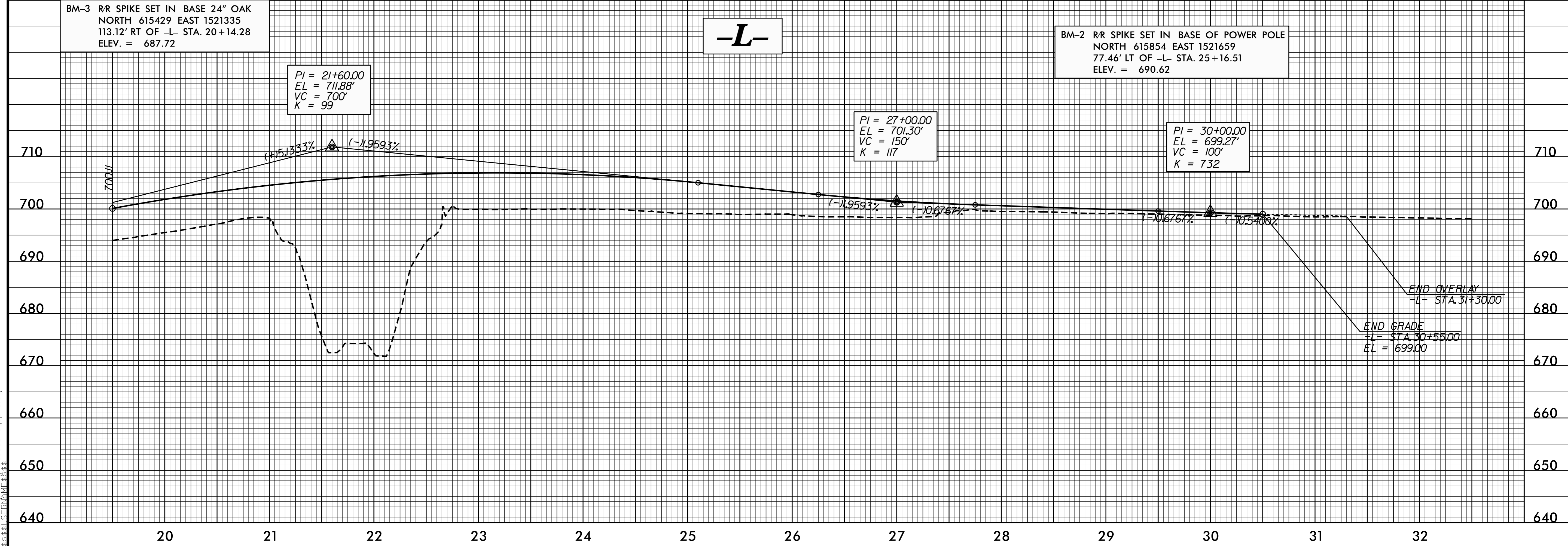
-L-



BM-3 RR SPIKE SET IN BASE 24" OAK
NORTH 615429 EAST 1521335
113.12' RT OF -L- STA. 20+14.28
ELEV. = 687.72

-L-

BM-2 R/R SPIKE SET IN BASE OF POWER POLE
NORTH 615854 EAST 1521659
77.46' LT OF -L- STA. 25+16.51
ELEV. = 690.62



07 JAN-2015 15:01 B5136.Rdy.p1.dgn