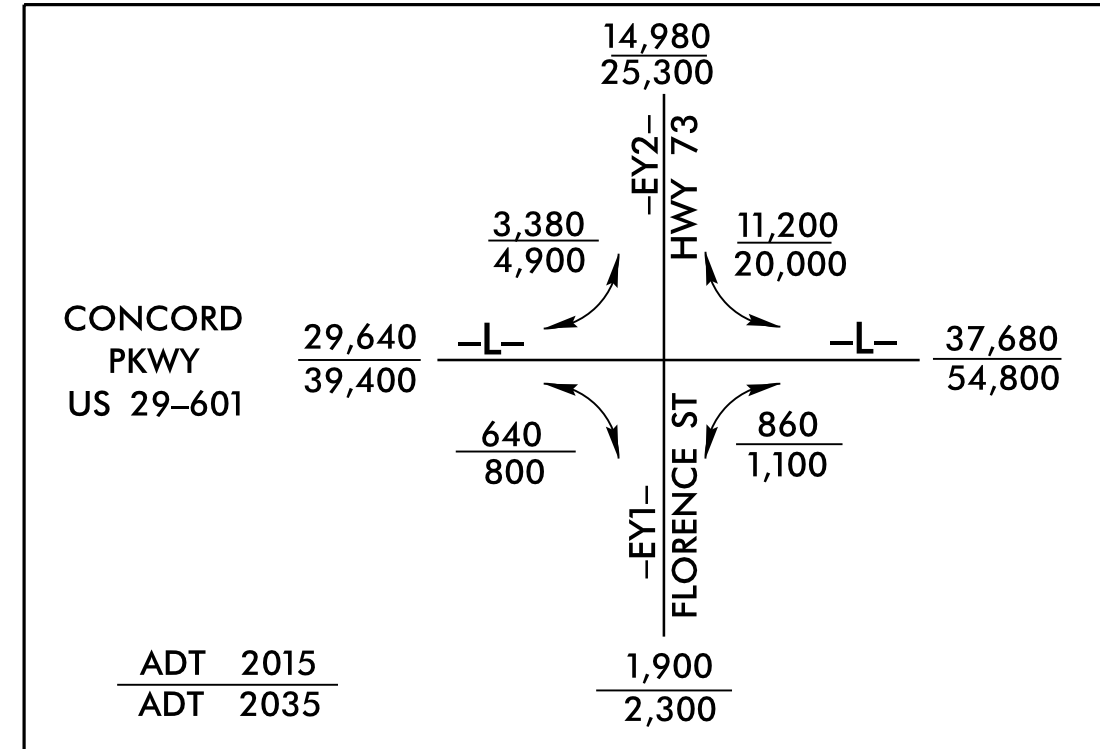
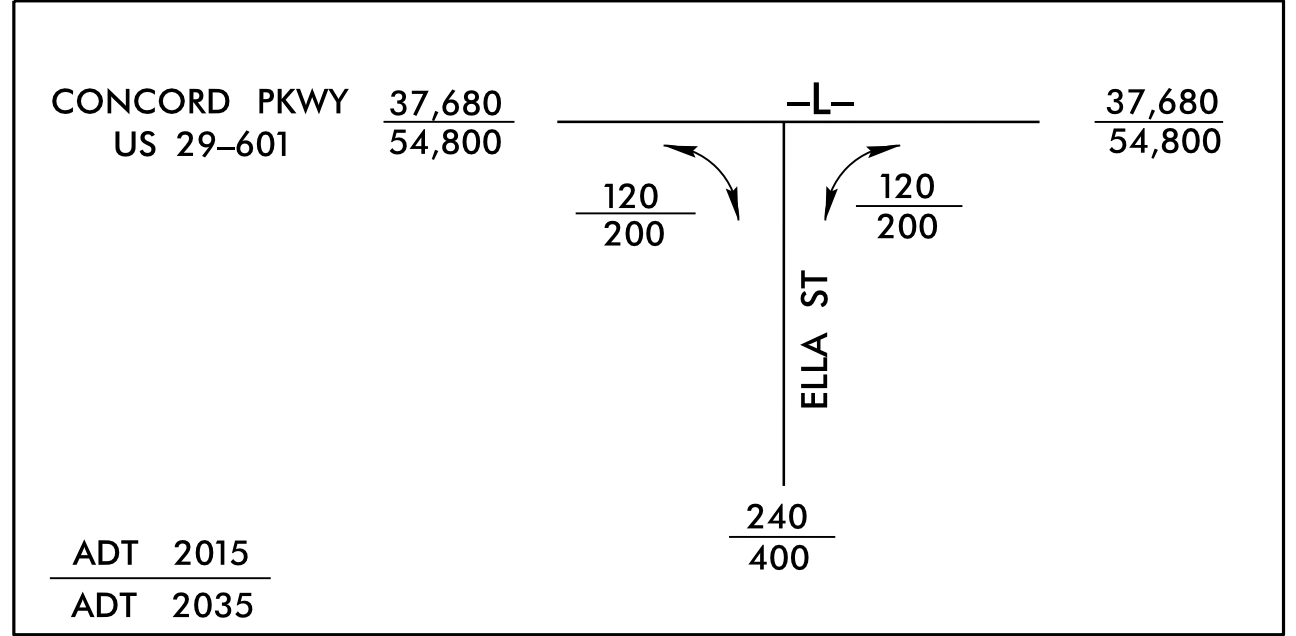
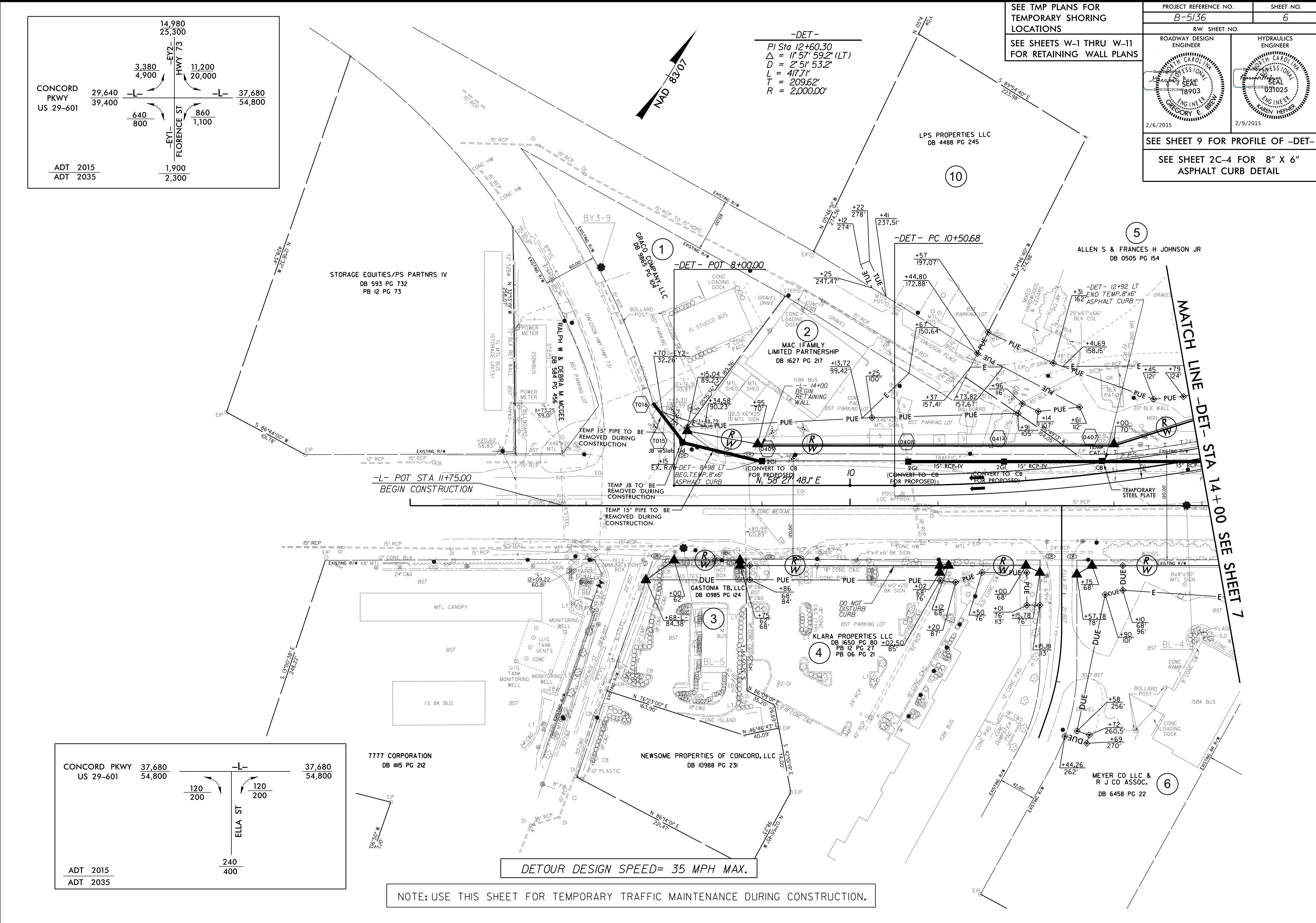


PROJECT REFERENCE NO. B-5136		SHEET NO. 6
RW SHEET NO.		
ROADWAY DESIGN ENGINEER Gregory E. Brown Professional Engineer No. 18903	HYDRAULICS ENGINEER Karen Hepper Professional Engineer No. 031025	
2/6/2015	2/9/2015	
SEE SHEET 9 FOR PROFILE OF -DET-		
SEE SHEET 2C-4 FOR 8" X 6" ASPHALT CURB DETAIL		



-DET-
 PI Sta 12+60.30
 $\Delta = 11' 57'' 59.2''$ (LT)
 $D = 2' 51'' 53.2''$
 $L = 417.71'$
 $T = 209.62'$
 $R = 2,000.00'$

SEE TMP PLANS FOR
 TEMPORARY SHORING
 LOCATIONS
 SEE SHEETS W-1 THRU W-11
 FOR RETAINING WALL PLANS



05-FEB-2015 16:40 B5136_Rdwy_psh.06.dgn