

GEOTECHNICAL ENGINEER

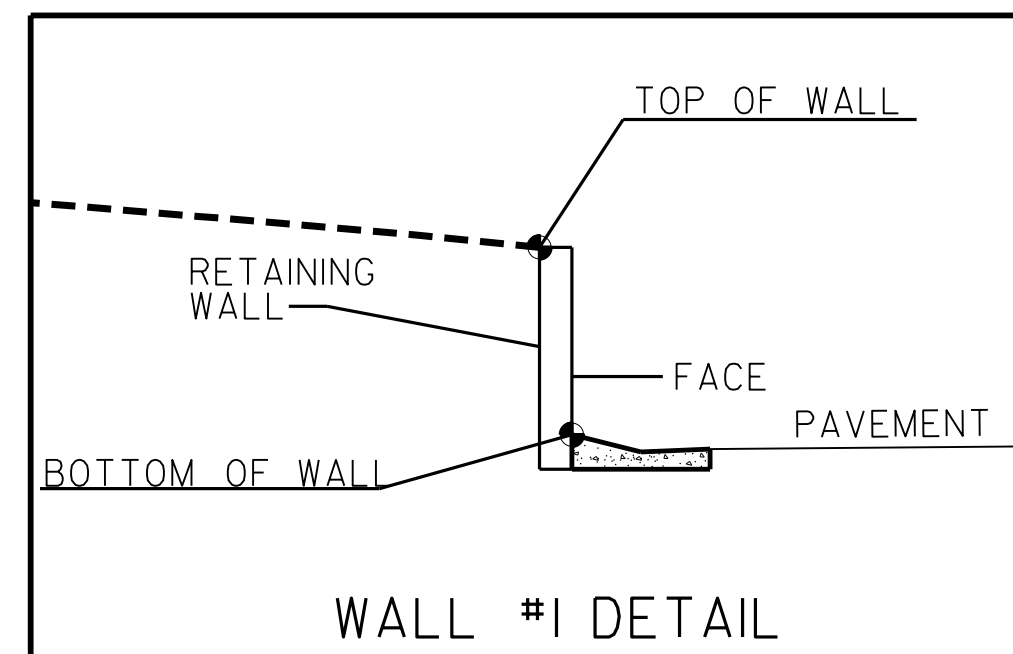
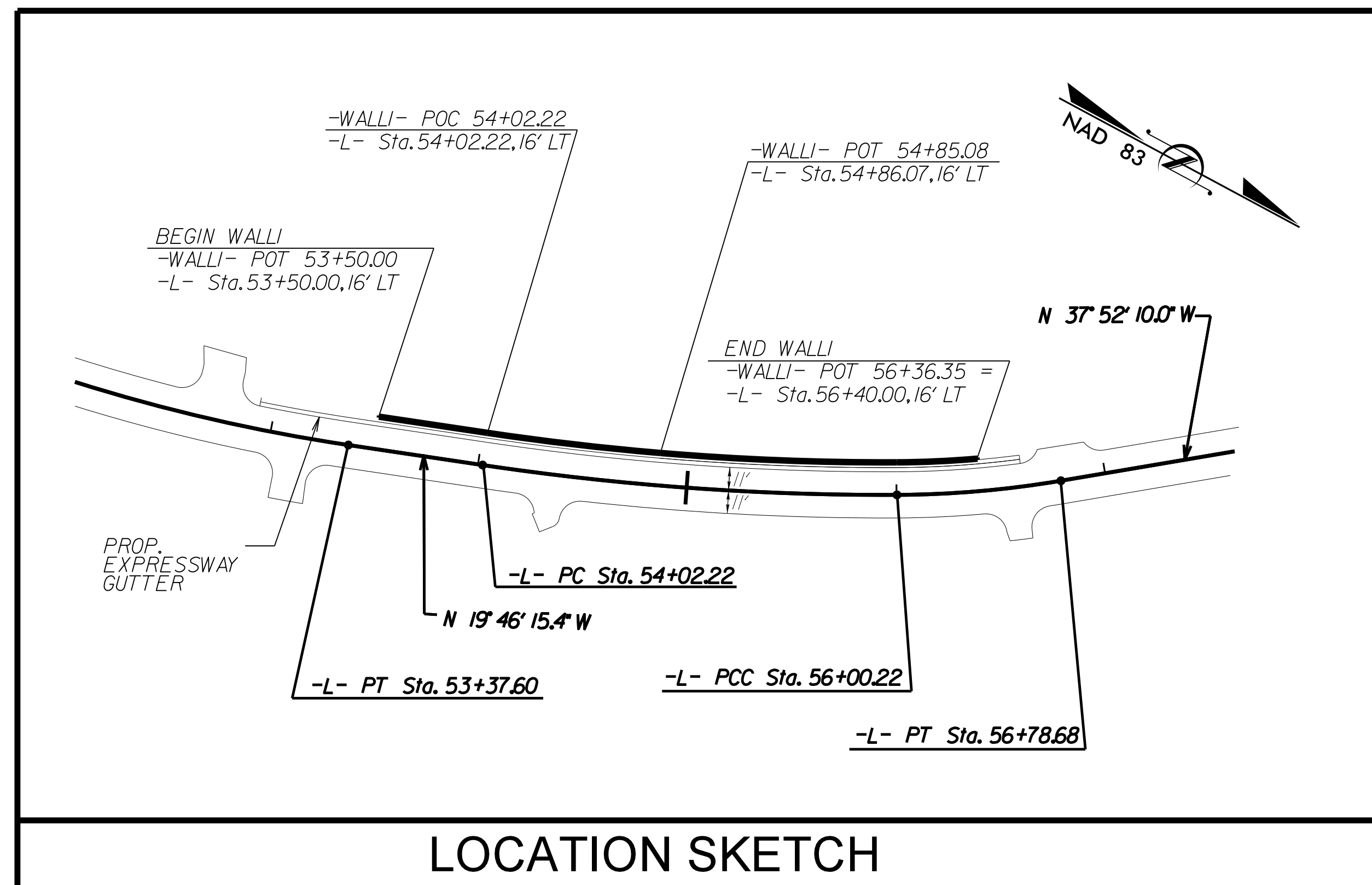
ENGINEER

NORTH CAROLINA PROFESSIONAL SEAL 29869

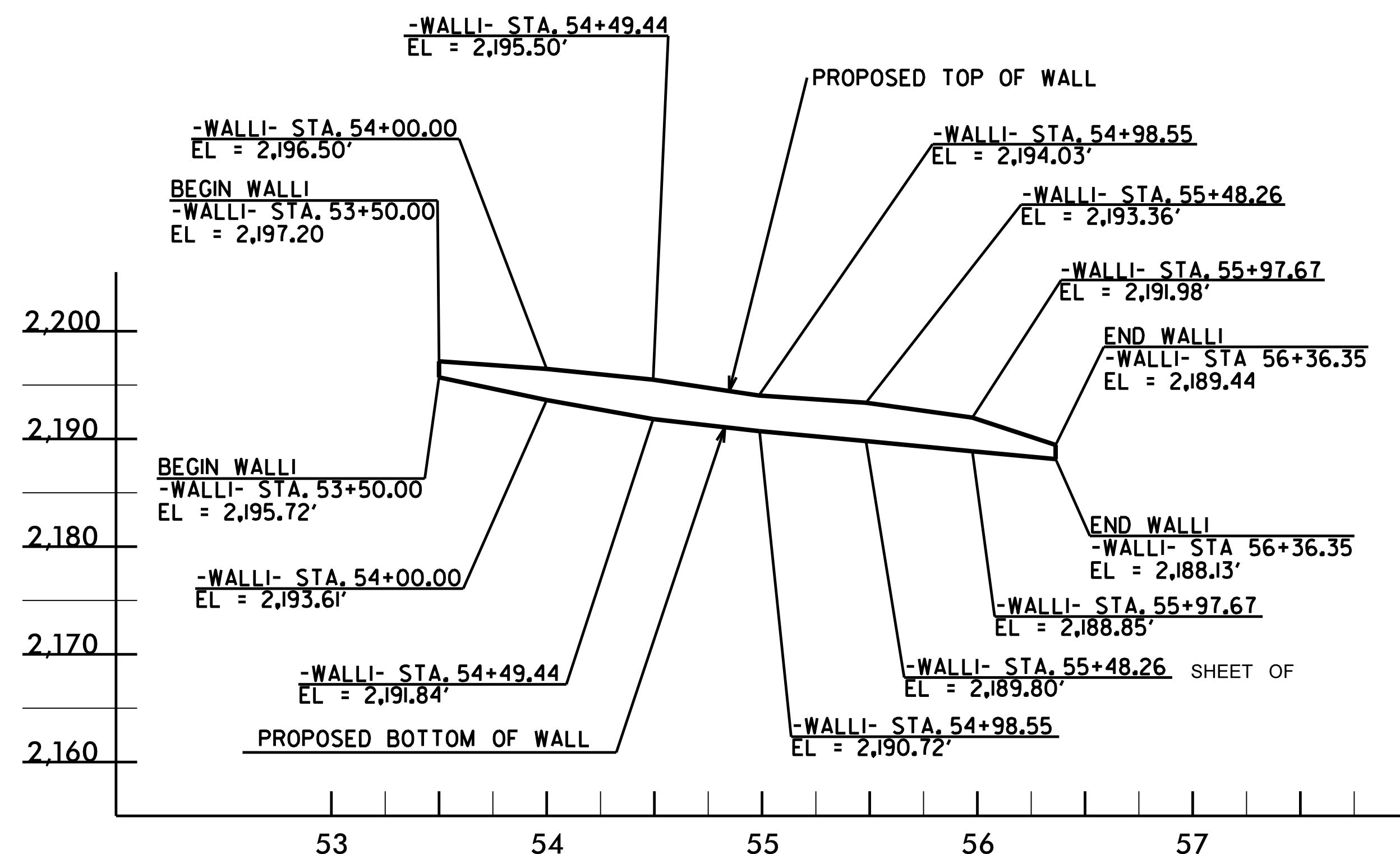
Shane C. Clark

5/6/2015

SIGNATURE DATE SIGNATURE DATE



ESTIMATED WALL QUANTITY	
RETAINING WALL NO.	CAST-IN-PLACE GRAVITY RETAINING WALL (SQUARE FEET)
1	850
	SIMULATED STONE FORM LINER FINISH (SQUARE FEET)
1	850



NOTE: WALL OFFSET IS 16 FT. LEFT OF CENTERLINE -L-

PROJECT NO.: R-5206
 JACKSON COUNTY
 STATION: 53+50.00 -L- TO 56+40.00 -L-
 SHEET 1 OF 4

PREPARED BY: EJS DATE: 4/15
 REVIEWED BY: SCC DATE: 4/15

NORTH CAROLINA DEPARTMENT OF TRANSPORTATION DIVISION OF HIGHWAYS

GEOTECHNICAL ENGINEERING UNIT

CAST-IN-PLACE GRAVITY RETAINING WALL

REVISIONS						SHEET NO.
NO.	BY	DATE	NO.	BY	DATE	
1			3			W 1
2			4			