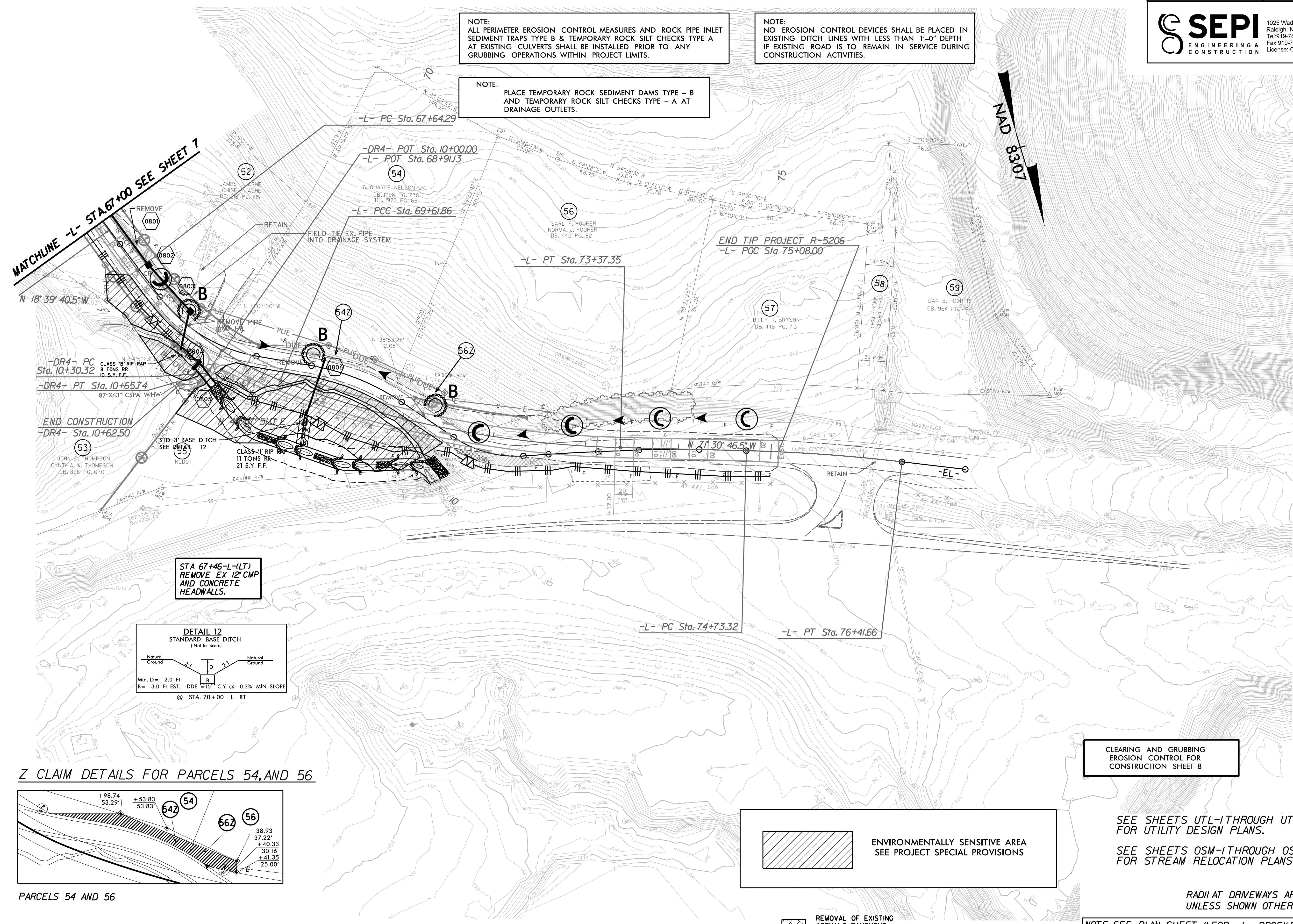


NOTE:  
ALL PERIMETER EROSION CONTROL MEASURES AND ROCK PIPE INLET SEDIMENT TRAPS TYPE B & TEMPORARY ROCK SILT CHECKS TYPE A AT EXISTING CULVERTS SHALL BE INSTALLED PRIOR TO ANY GRUBBING OPERATIONS WITHIN PROJECT LIMITS.

NOTE:  
NO EROSION CONTROL DEVICES SHALL BE PLACED IN EXISTING DITCH LINES WITH LESS THAN 1'-0" DEPTH IF EXISTING ROAD IS TO REMAIN IN SERVICE DURING CONSTRUCTION ACTIVITIES.

NOTE:  
PLACE TEMPORARY ROCK SEDIMENT DAMS TYPE - B AND TEMPORARY ROCK SILT CHECKS TYPE - A AT DRAINAGE OUTLETS.

MATCHLINE -L- STA. 67+00 SEE SHEET 7

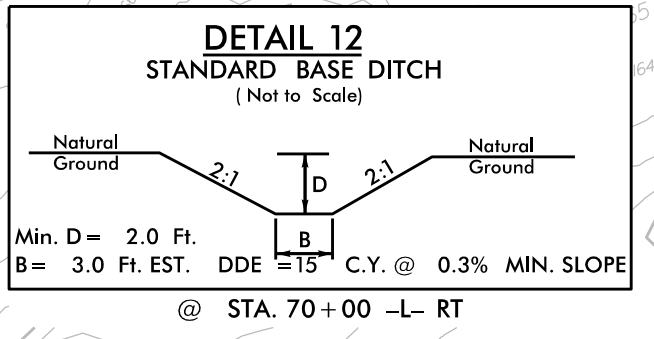


-DR4- PC Sta. 10+30.32  
CLASS 'B' RIP RAP  
8 TONS RR  
10 S.Y.F.F.

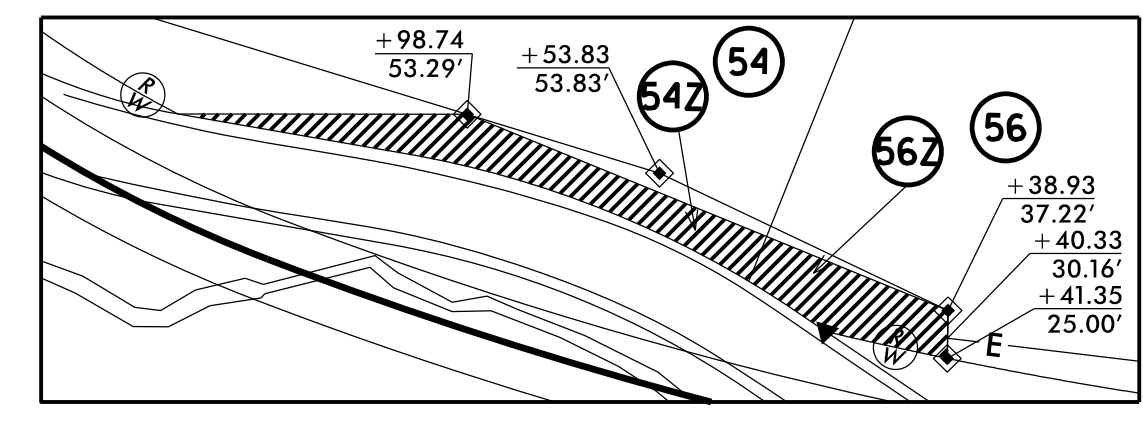
-DR4- PT Sta. 10+65.74  
87\"X63\" CSPA WHW

END CONSTRUCTION  
-DR4- Sta. 10+62.50

STA 67+46 -L- (LT)  
REMOVE EX 12\" CMP  
AND CONCRETE  
HEADWALLS.



Z CLAIM DETAILS FOR PARCELS 54, AND 56



PARCELS 54 AND 56

ENVIRONMENTALLY SENSITIVE AREA  
SEE PROJECT SPECIAL PROVISIONS

REMOVAL OF EXISTING ASPHALT PAVEMENT

CLEARING AND GRUBBING  
EROSION CONTROL FOR  
CONSTRUCTION SHEET 8

SEE SHEETS UTL-1 THROUGH UTL-2  
FOR UTILITY DESIGN PLANS.

SEE SHEETS OSM-1 THROUGH OSM-11  
FOR STREAM RELOCATION PLANS.

RADIUS AT DRIVEWAYS ARE 10'  
UNLESS SHOWN OTHERWISE

NOTE: SEE PLAN SHEET 11 FOR -L- PROFILE  
NOTE: SEE PLAN SHEET 12 FOR -DR4- PROFILE