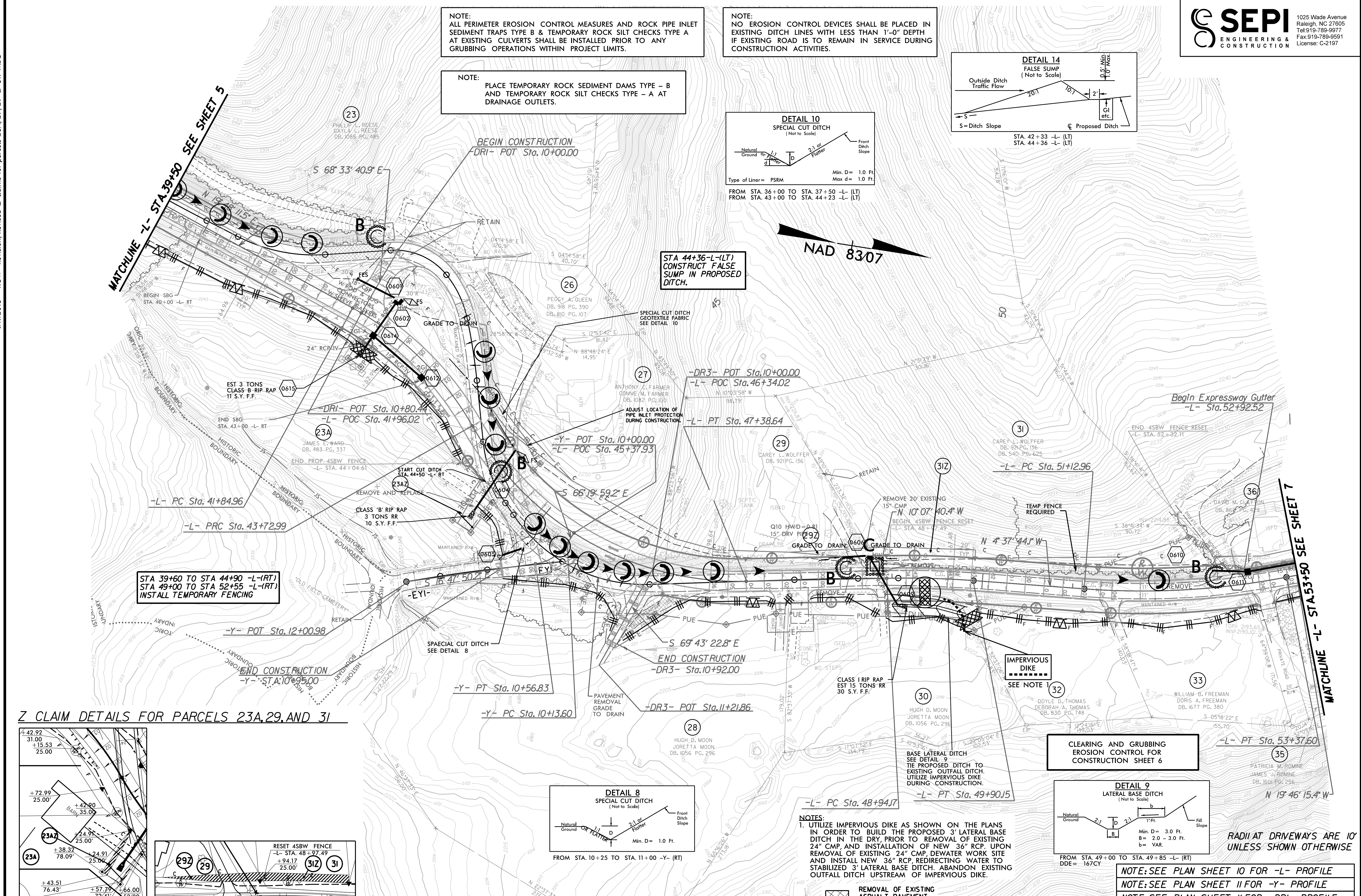


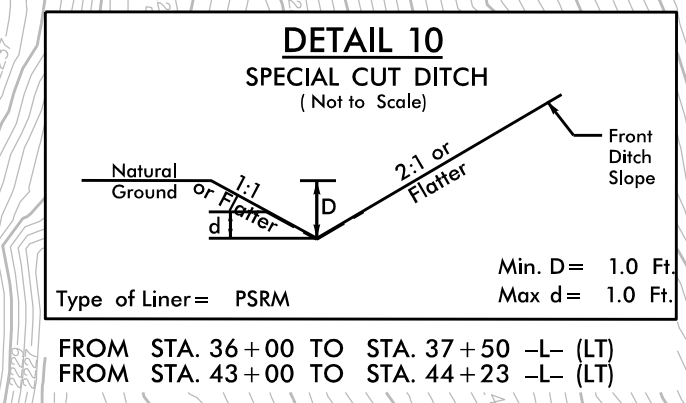
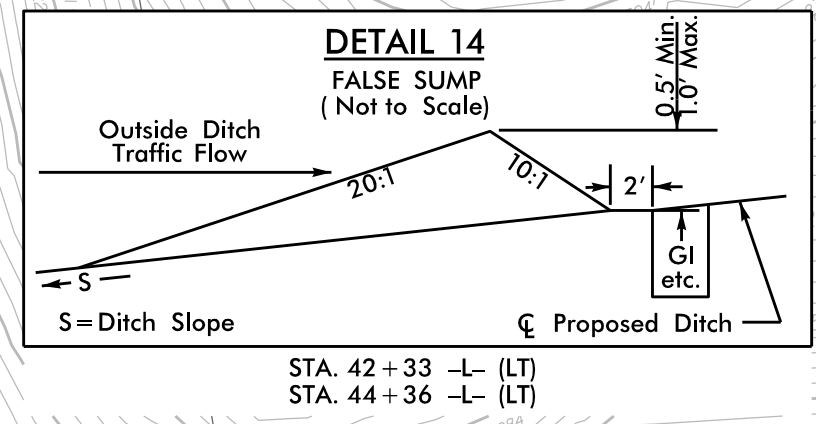
9/17/2013 - ROW Revision, Revised Z claims for parcels 23A, 27, 29 & 31. WBC



NOTE:
ALL PERIMETER EROSION CONTROL MEASURES AND ROCK PIPE INLET SEDIMENT TRAPS TYPE B & TEMPORARY ROCK SILT CHECKS TYPE A AT EXISTING CULVERTS SHALL BE INSTALLED PRIOR TO ANY GRUBBING OPERATIONS WITHIN PROJECT LIMITS.

NOTE:
NO EROSION CONTROL DEVICES SHALL BE PLACED IN EXISTING DITCH LINES WITH LESS THAN 1'-0" DEPTH IF EXISTING ROAD IS TO REMAIN IN SERVICE DURING CONSTRUCTION ACTIVITIES.

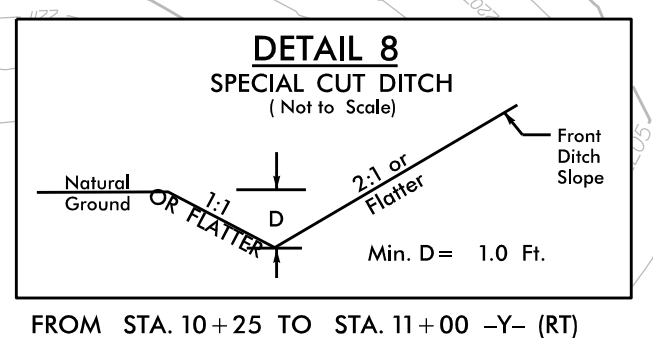
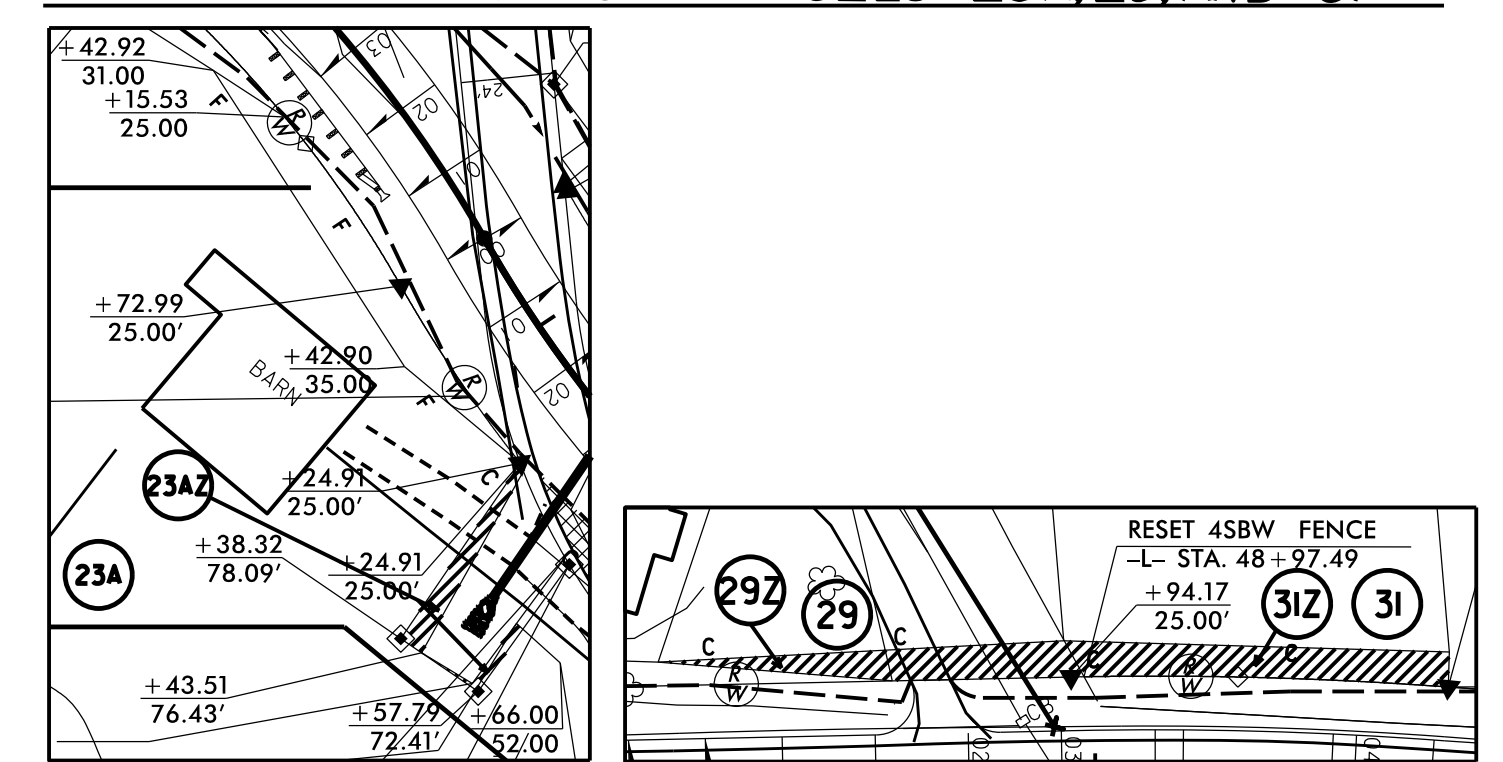
NOTE:
PLACE TEMPORARY ROCK SEDIMENT DAMS TYPE - B AND TEMPORARY ROCK SILT CHECKS TYPE - A AT DRAINAGE OUTLETS.



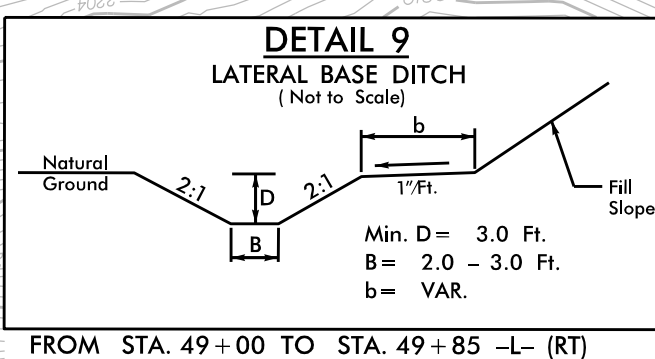
STA 44+36-L-(LT) CONSTRUCT FALSE SUMP IN PROPOSED DITCH.

STA 39+60 TO STA 44+90 -L-(RT)
STA 49+00 TO STA 52+55 -L-(RT)
INSTALL TEMPORARY FENCING

Z CLAIM DETAILS FOR PARCELS 23A, 29, AND 31



CLEARING AND GRUBBING EROSION CONTROL FOR CONSTRUCTION SHEET 6



NOTES:
1. UTILIZE IMPERVIOUS DIKE AS SHOWN ON THE PLANS IN ORDER TO BUILD THE PROPOSED 3' LATERAL BASE DITCH IN THE DRY, PRIOR TO REMOVAL OF EXISTING 24" CMP, AND INSTALLATION OF NEW 36" RCP. UPON REMOVAL OF EXISTING 24" CMP, DEWATER WORK SITE AND INSTALL NEW 36" RCP, REDIRECTING WATER TO STABILIZED 3' LATERAL BASE DITCH. ABANDON EXISTING OUTFALL DITCH UPSTREAM OF IMPERVIOUS DIKE.

NOTE: SEE PLAN SHEET 10 FOR -L- PROFILE
NOTE: SEE PLAN SHEET 11 FOR -Y- PROFILE
NOTE: SEE PLAN SHEET 11 FOR -DRI- PROFILE
NOTE: SEE PLAN SHEET 12 FOR -DR3- PROFILE

PARCEL 23A

PARCELS 29 AND 31

MATCHLINE -L- STA. 53+50 SEE SHEET 7

MATCHLINE -L- STA. 39+50 SEE SHEET 5