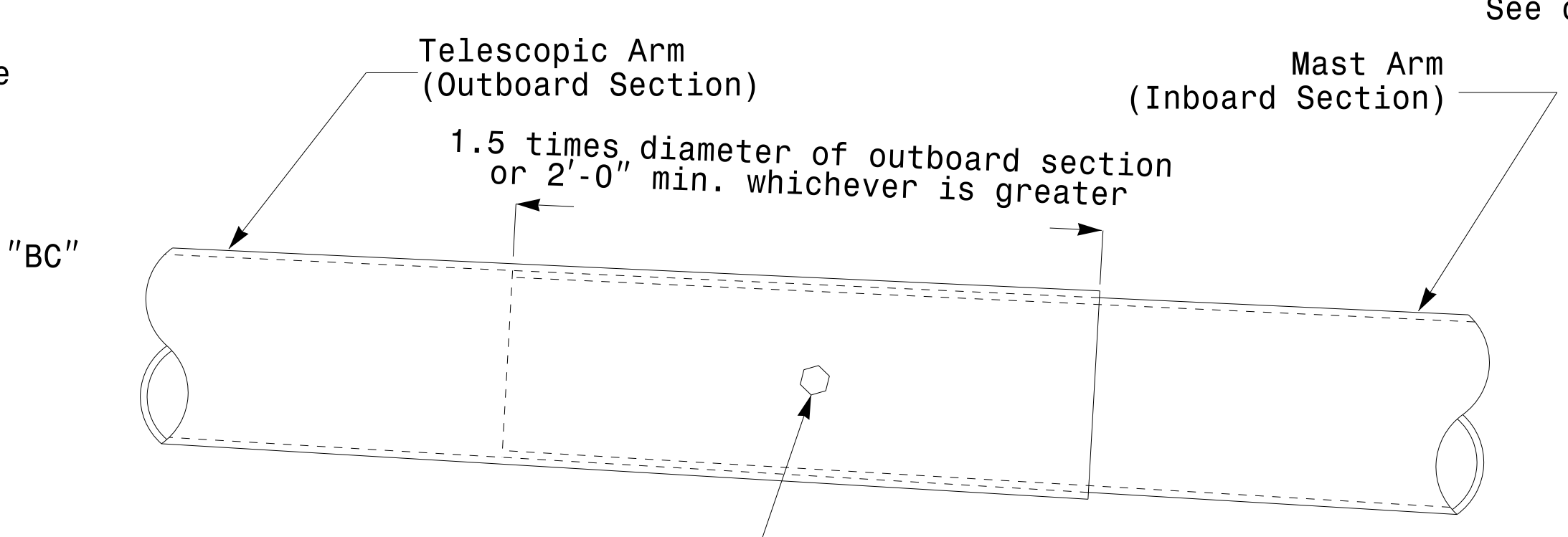
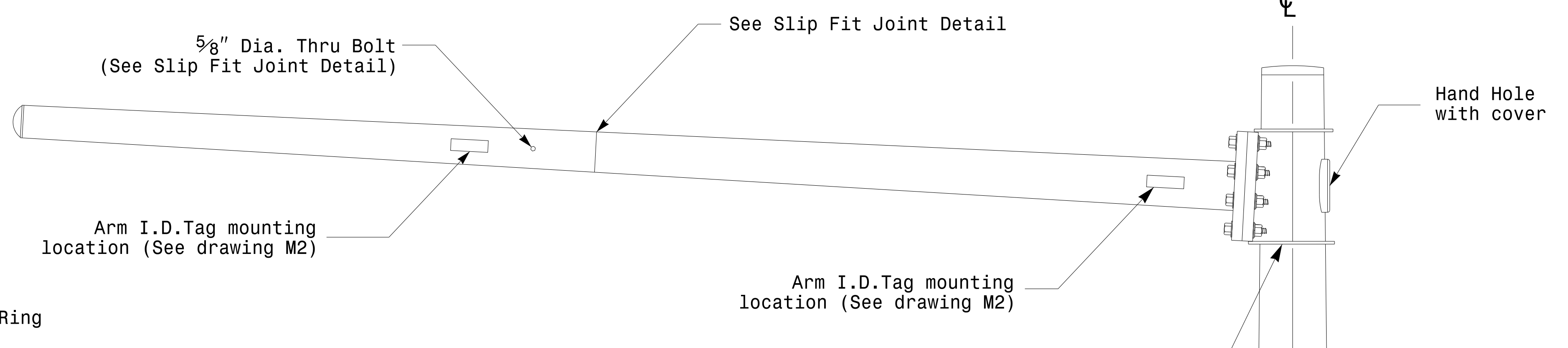
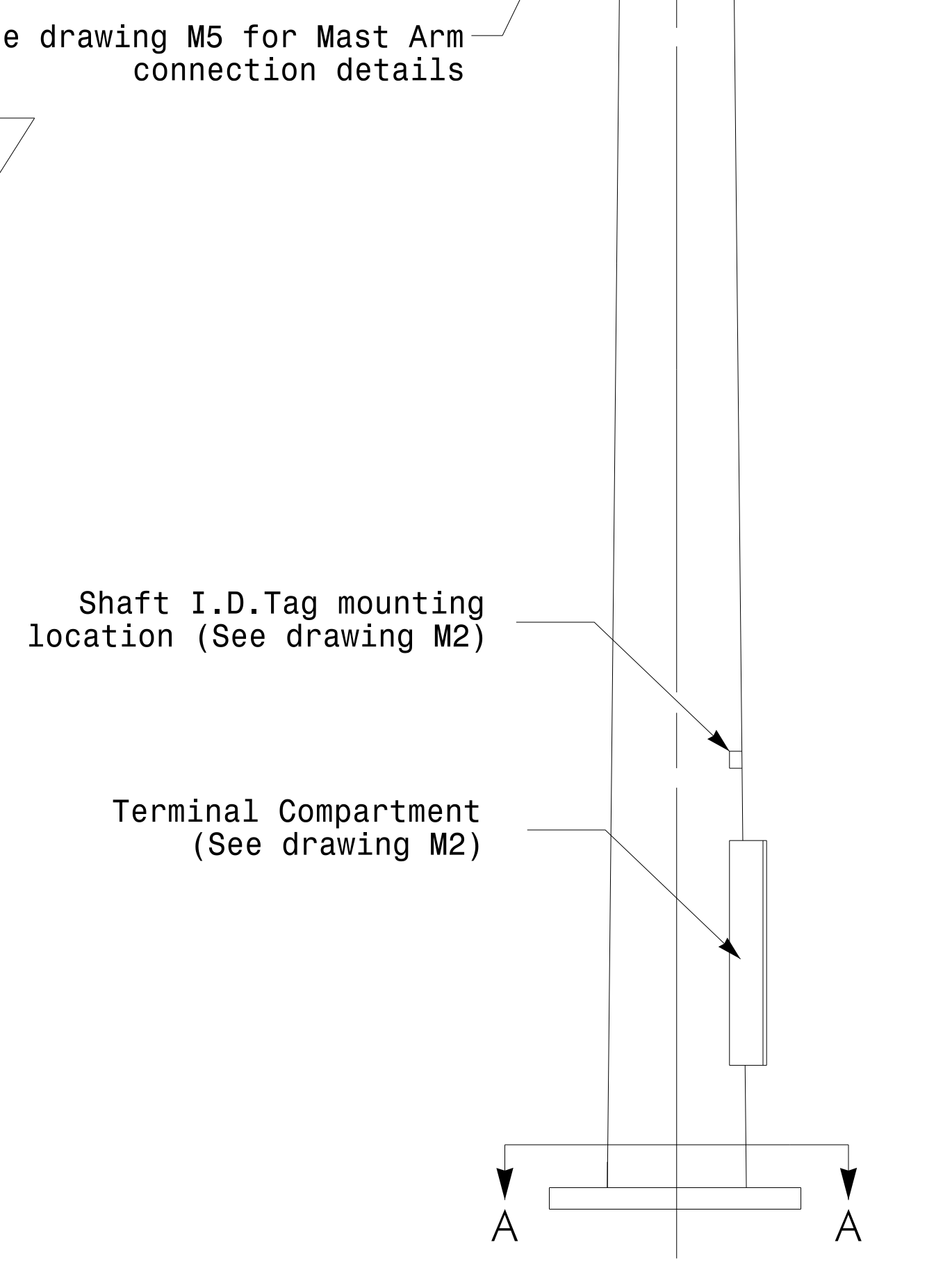


Section A-A
(See drawing M 2)
Pole Base Plate

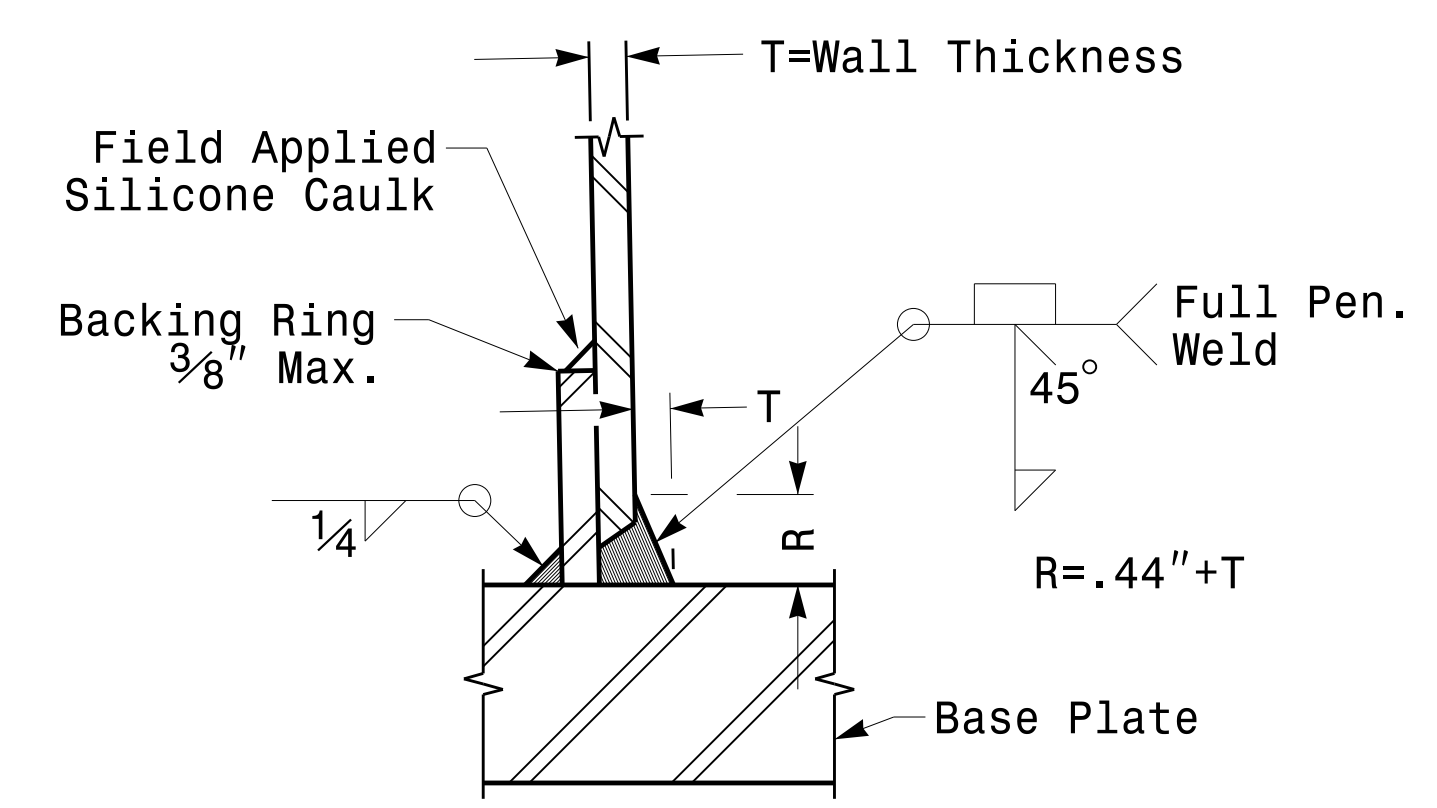


3/4" Factory Drilled Hole in Outboard Tube.
Field Drill Inboard Tube.
5/8" Galvanized Thru Stud with
(2) Hex. Locknuts Each.

Slip Fit Joint Detail for Mast Arm

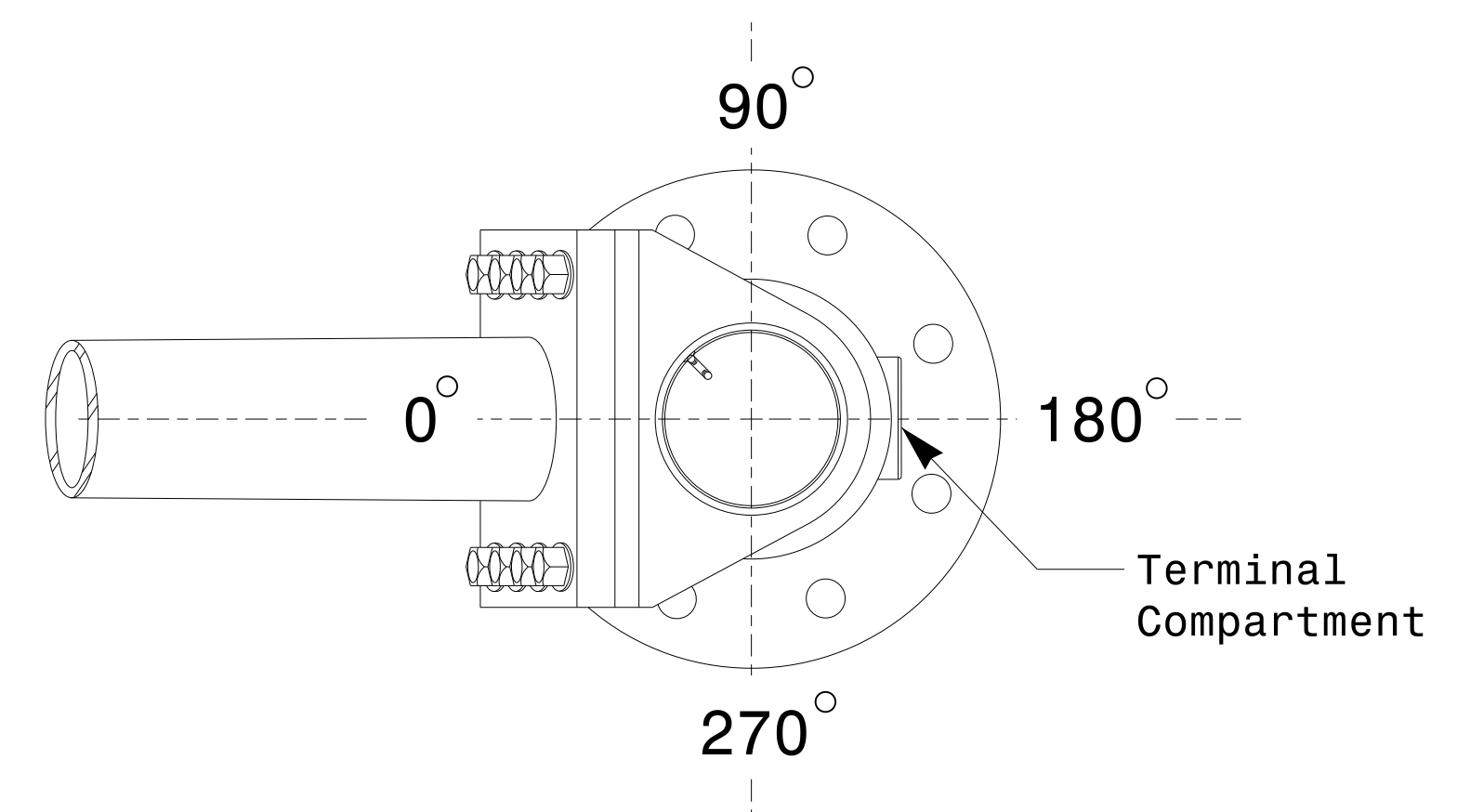


Monotube Mast Arm Pole
(.14in./ft. taper)



Section B-B
(Pole Attachment to Base Plate)

Full-Penetration Groove Weld Detail



Mast Arm Radial Orientation

	Prepared In the Offices of: 		SEAL NORTH CAROLINA PROFESSIONAL ENGINEER 028094 D. C. SARKAR	
	Typical Fabrication Details for Mast Arm Poles		3/11/2014	
PLAN DATE: AUGUST 2013 PREPARED BY: N. BITTING	DESIGNED BY: C.F. ANDREWS REVIEWED BY: D.C. SARKAR	REVISIONS	INIT.	DATE
SCALE: 0 NA NONE		SIG. INVENTORY NO.		

04-MAR-2014 13:52
 S:\MITS\514115\SIGNAL\Signal Design\Section\Eastern Region\M4_Fab_Details\MastArms.dgn
 Topiloway

Fabrication Details – Mast Arm Poles