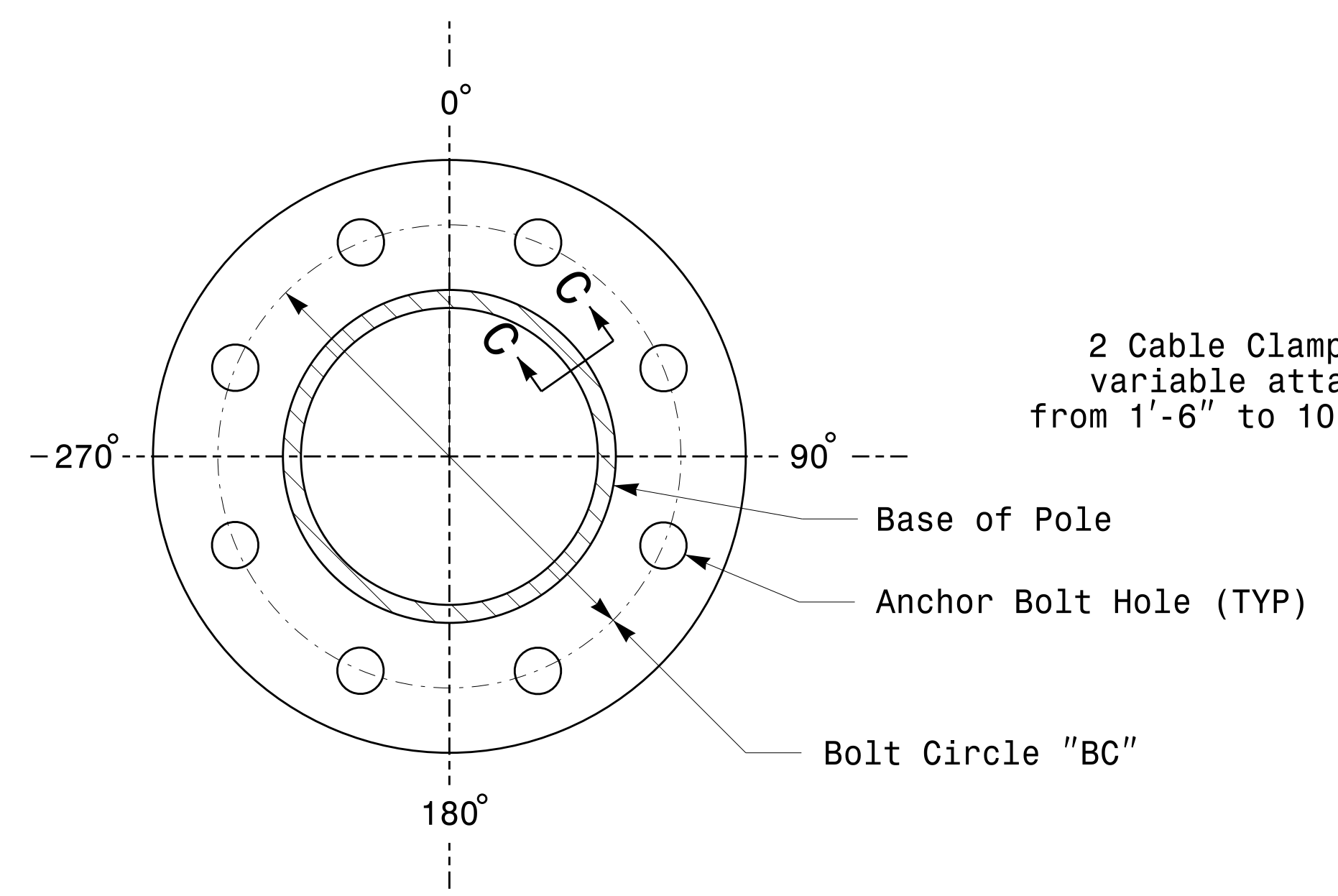
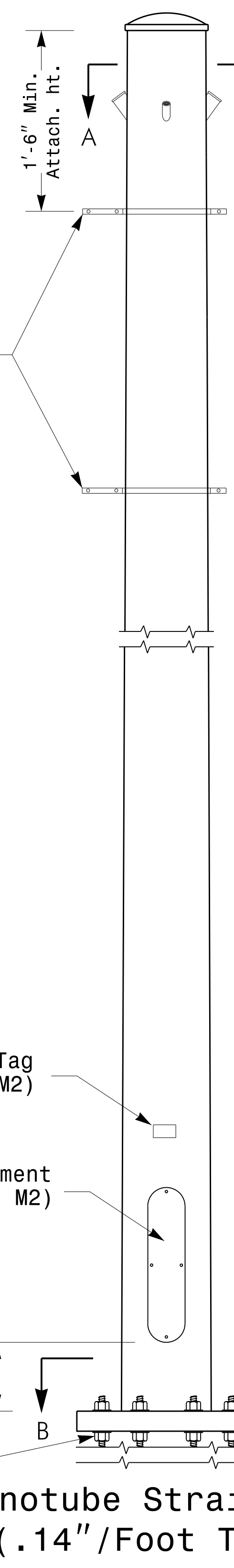


Cable Entrances at Top of Pole

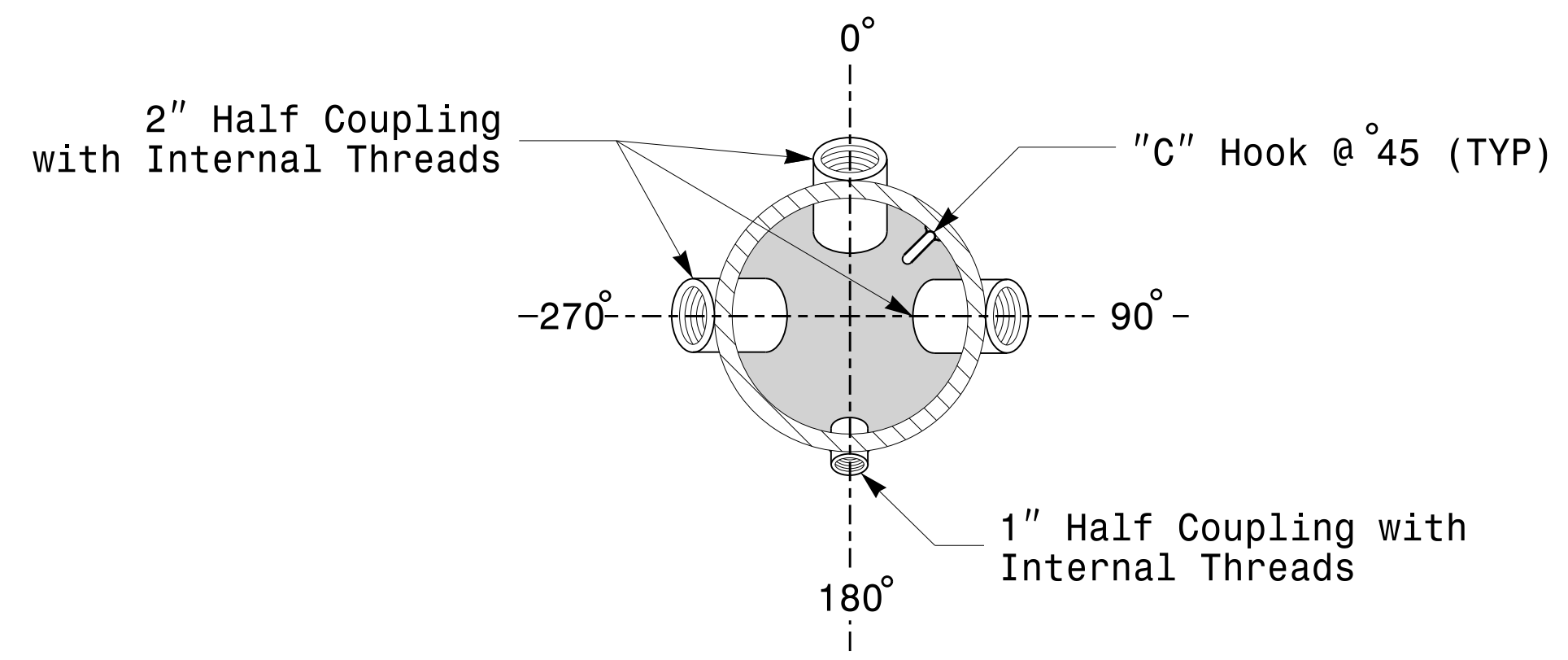


Section B-B
(See drawing M2)
Pole Base Plate

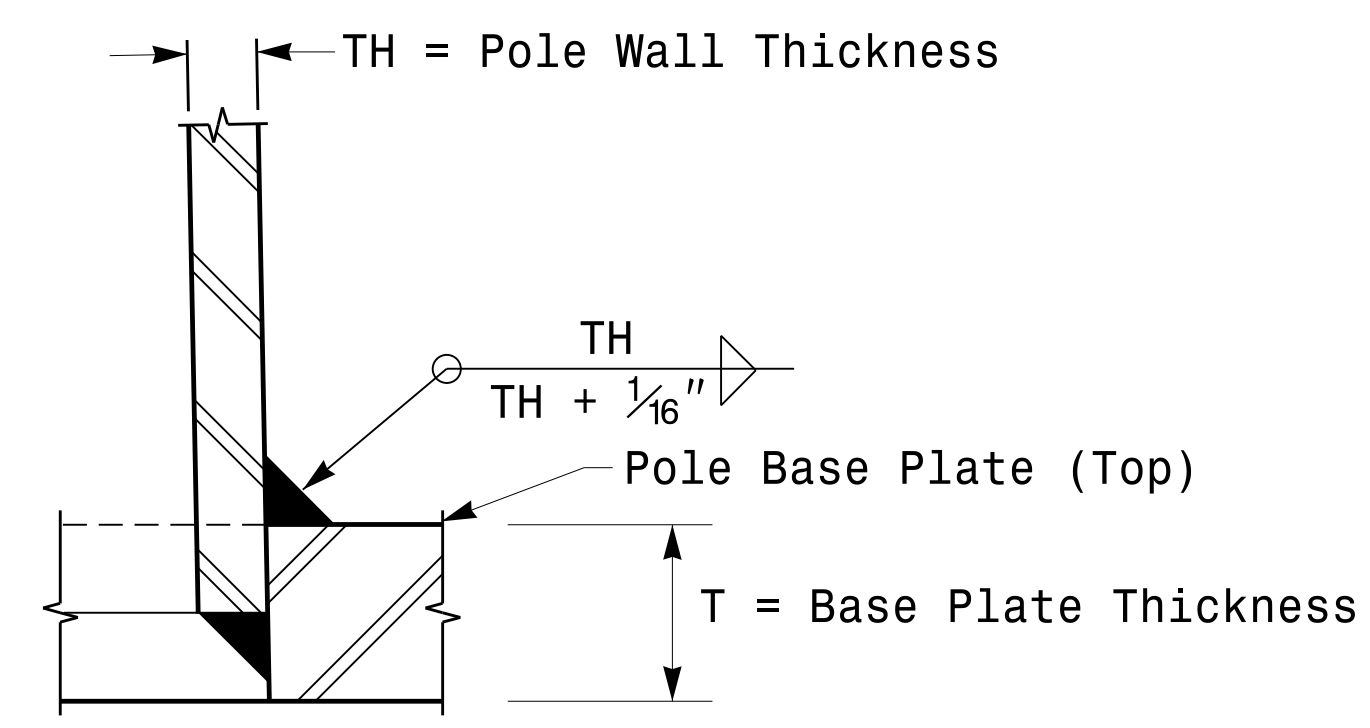
2 Cable Clamps designed for variable attachment heights from 1'-6" to 10' below the top of the pole.



Monotube Strain Pole
(.14"/Foot Taper)



Section A-A
Radial Orientation for Factory Installed Accessories at Top of Pole



Section C-C
Socket Connection Weld Detail

	<p>Typical Fabrication Details For Strain Poles</p>		
	<p>PLAN DATE: AUGUST 2013</p> <p>PREPARED BY: N. BITTING</p>	<p>DESIGNED BY: C.F. ANDREWS</p> <p>REVIEWED BY: D.C. SARKAR</p>	
<p>SCALE: 0 NA NONE</p>	<p>REVISIONS</p>	<p>INIT. DATE</p>	<p>SIGNATURE DATE</p>

04-M3B-2013-12-16
S:\MITS\SIG\M3\Sig\Signal\Signal Design\Section\Eastern Region\M3_Fab_Details\Strain_Poles.dgn
7:00:11 AM

Fabrication Details – Strain Poles