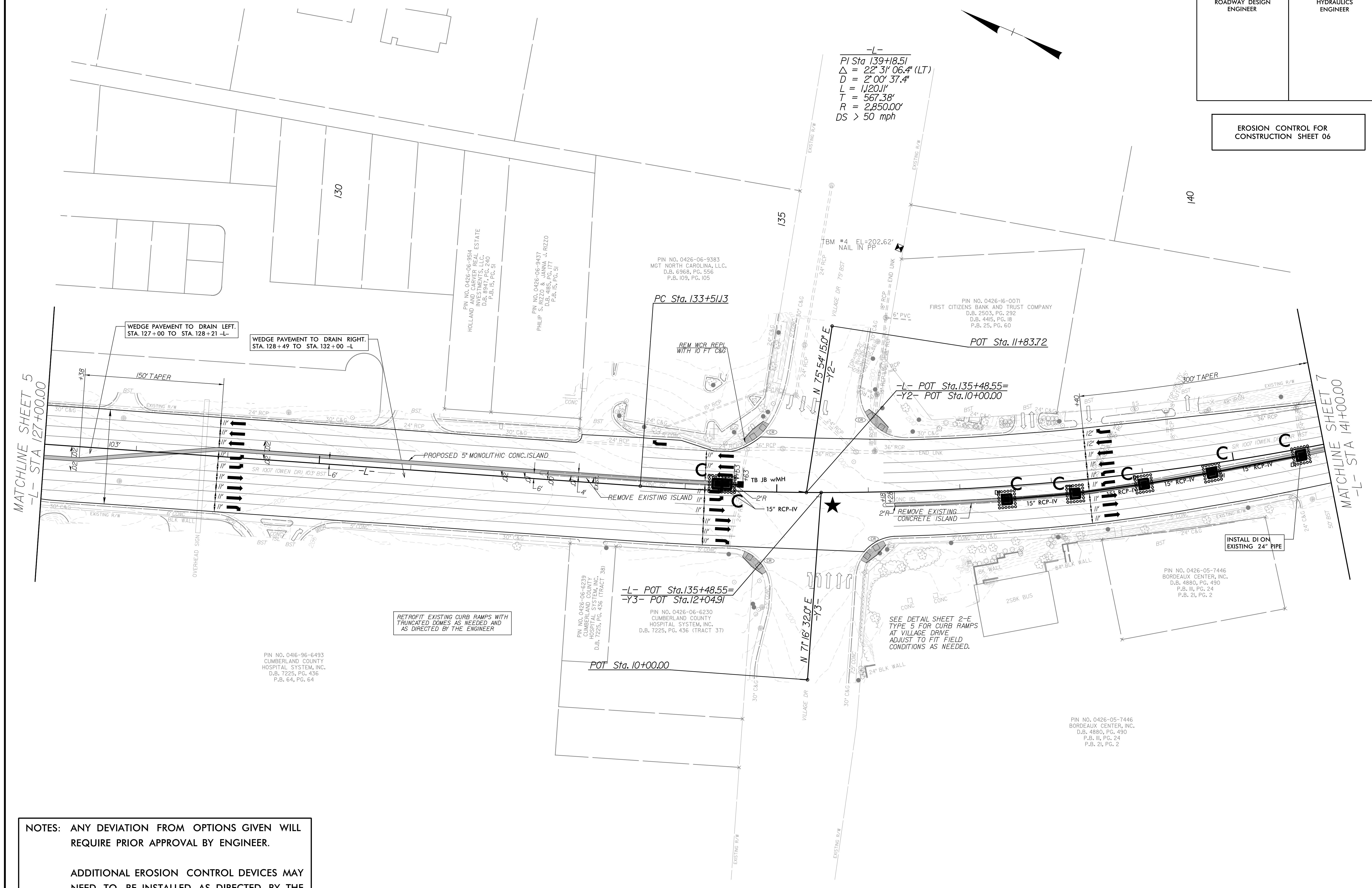


PROJECT REFERENCE NO.	SHEET NO.
W-55/4	EC-06/CONST.06
RW SHEET NO.	
ROADWAY DESIGN ENGINEER	HYDRAULICS ENGINEER

EROSION CONTROL FOR CONSTRUCTION SHEET 06



NOTES: ANY DEVIATION FROM OPTIONS GIVEN WILL REQUIRE PRIOR APPROVAL BY ENGINEER.

ADDITIONAL EROSION CONTROL DEVICES MAY NEED TO BE INSTALLED AS DIRECTED BY THE ENGINEER.

-L-
 PI Sta. 139+18.51
 $\Delta = 22^\circ 31' 06.4''$ (LT)
 $D = 2^\circ 00' 37.4''$
 $L = 1,120.11'$
 $T = 567.38'$
 $R = 2,850.00'$
 $DS > 50$ mph

WEDGE PAVEMENT TO DRAIN LEFT.
 STA. 127+00 TO STA. 128+21 -L-

WEDGE PAVEMENT TO DRAIN RIGHT.
 STA. 128+49 TO STA. 132+00 -L

RETROFIT EXISTING CURB RAMPS WITH TRUNCATED DOMES AS NEEDED AND AS DIRECTED BY THE ENGINEER

SEE DETAIL SHEET 2-F TYPE 5 FOR CURB RAMPS AT VILLAGE DRIVE ADJUST TO FIT FIELD CONDITIONS AS NEEDED.

INSTALL DI ON EXISTING 24\"/>