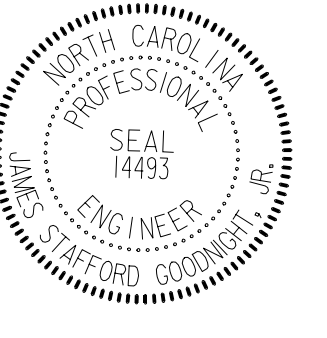

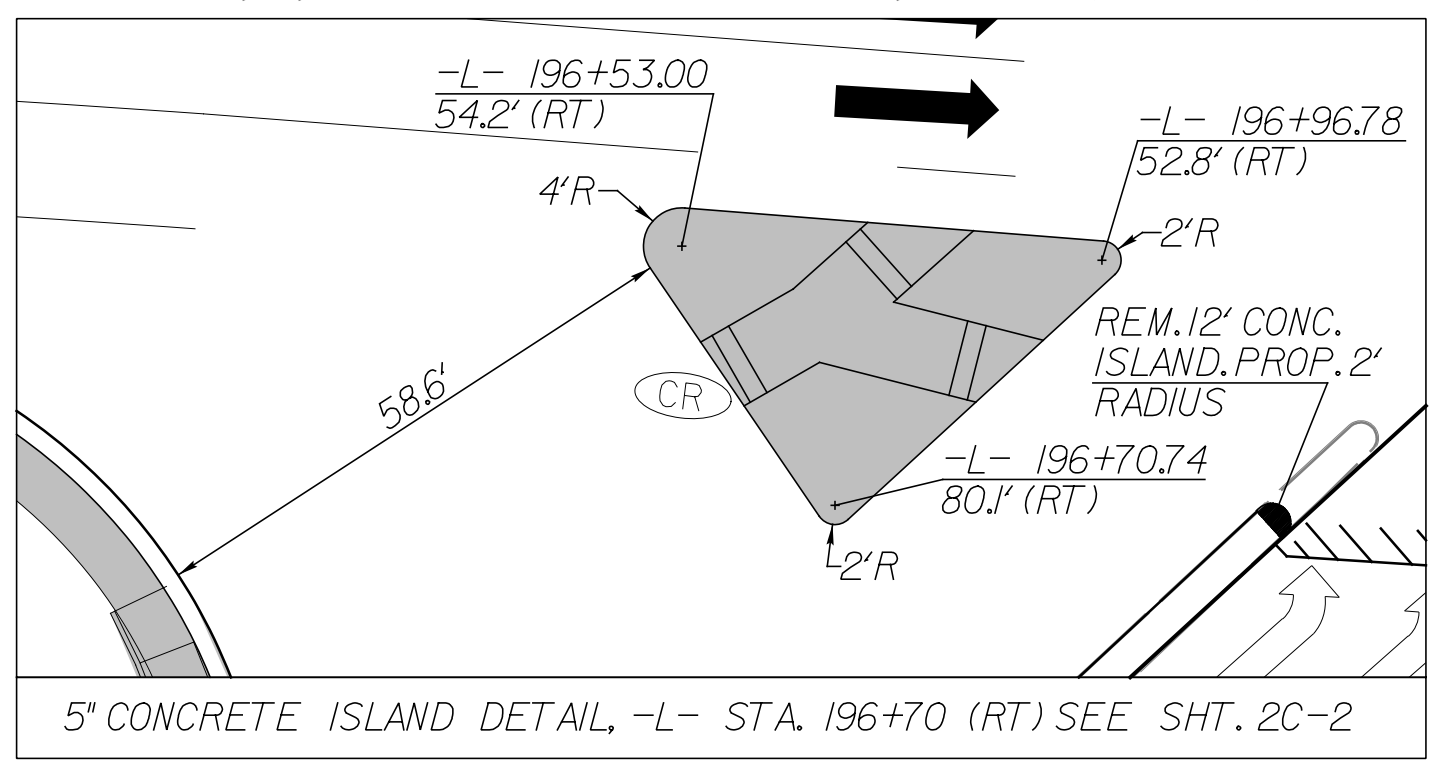
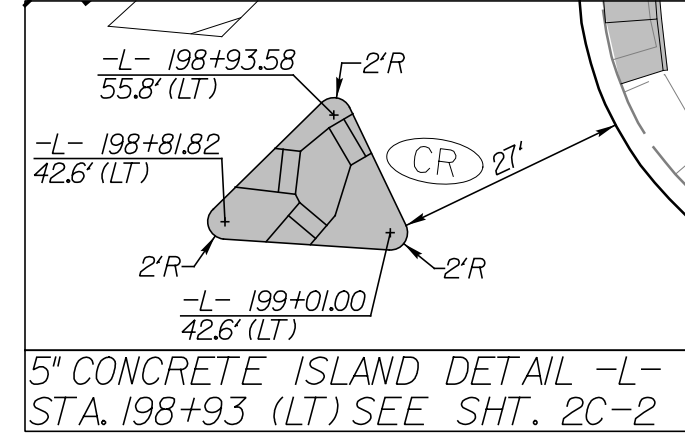


PROJECT REFERENCE NO. W-5514	SHEET NO. 11
RW SHEET NO.	
ROADWAY DESIGN ENGINEER	HYDRAULICS ENGINEER
	

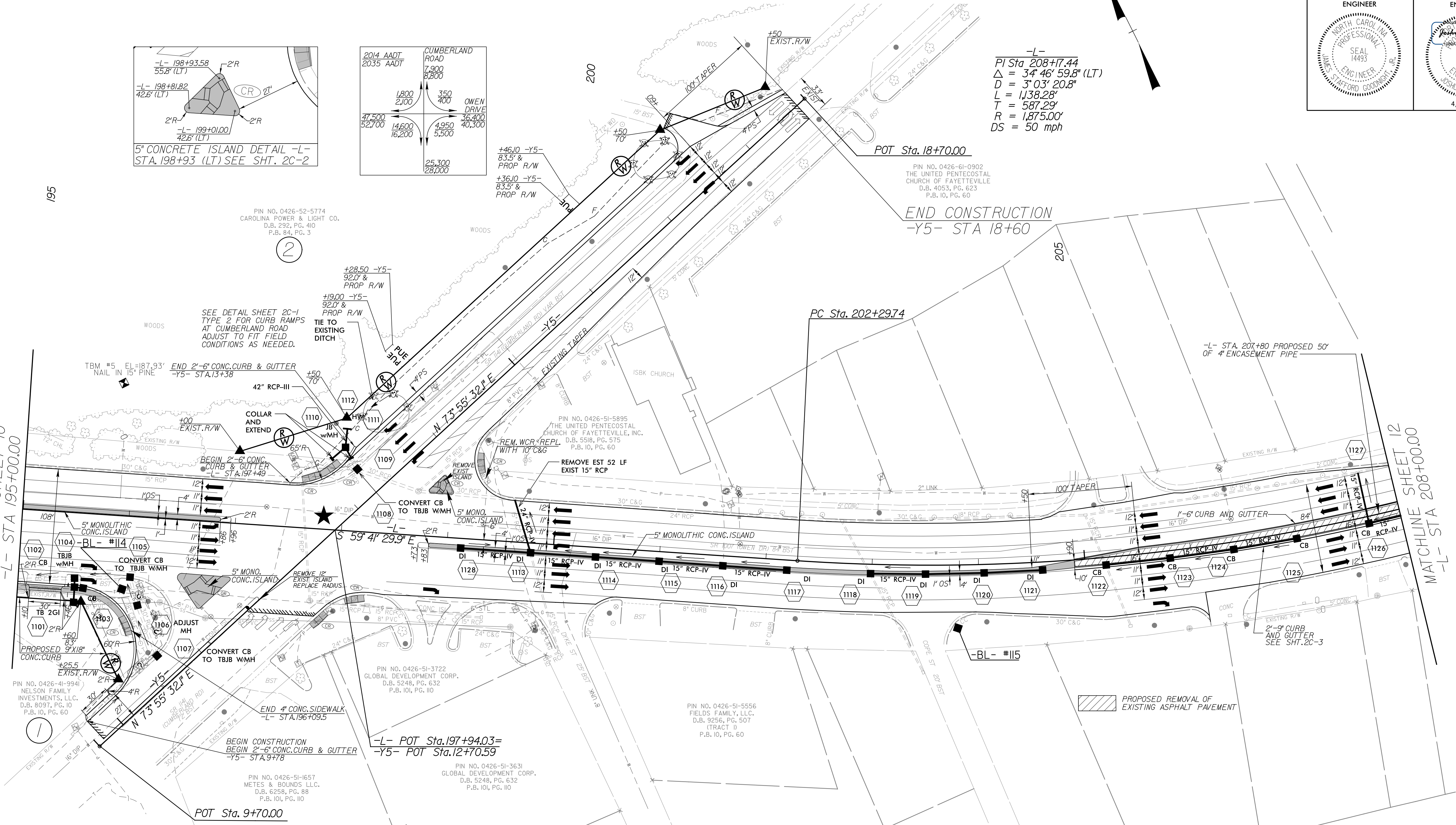
-L-  
PI Sta. 208+77.44  
 $\Delta = 34' 46" 59.8" (LT)$   
 $D = 3' 03" 20.8"$   
 $L = 1,388.29'$   
 $T = 587.29'$   
 $R = 1,875.00'$   
 $DS = 50 \text{ mph}$

2014 AADT	CUMBERLAND ROAD
2035 AADT	
1,800	350
2,100	400
47,500	36,400
52,700	40,300
14,600	4,950
16,200	5,500
	25,300
	28,000



MATCHLINE SHEET 10  
-L- STA 195+00.00

MATCHLINE SHEET 12  
-L- STA 208+00.00



195

205

PIN NO. 0426-41-9941  
NELSON FAMILY INVESTMENTS, L.L.C.  
D.B. 8097, PG. 10  
P.B. 10, PG. 60

PIN NO. 0426-52-5774  
CAROLINA POWER & LIGHT CO.  
D.B. 292, PG. 410  
P.B. 84, PG. 3

+46.10 -Y5-  
83.5' &  
PROP. R/W

+36.10 -Y5-  
83.5' &  
PROP. R/W

PIN NO. 0426-51-0902  
THE UNITED PENTECOSTAL CHURCH OF FAYETTEVILLE  
D.B. 4053, PG. 623  
P.B. 10, PG. 60

PIN NO. 0426-51-5895  
THE UNITED PENTECOSTAL CHURCH OF FAYETTEVILLE, INC.  
D.B. 5518, PG. 575  
P.B. 10, PG. 60

PIN NO. 0426-51-3722  
GLOBAL DEVELOPMENT CORP.  
D.B. 5248, PG. 632  
P.B. 101, PG. 10

PIN NO. 0426-51-5556  
FIELDS FAMILY, L.L.C.  
D.B. 9256, PG. 507  
(TRACT 1)  
P.B. 10, PG. 60

PIN NO. 0426-51-1657  
METES & BOUNDS L.L.C.  
D.B. 6258, PG. 88  
P.B. 101, PG. 10

PIN NO. 0426-51-3631  
GLOBAL DEVELOPMENT CORP.  
D.B. 5248, PG. 632  
P.B. 101, PG. 10

PIN NO. 0426-51-5556  
FIELDS FAMILY, L.L.C.  
D.B. 9256, PG. 507  
(TRACT 2)  
P.B. 10, PG. 60

5/14/2015

4/30/2015  
4\_rdy\_psh\_11.dgn