
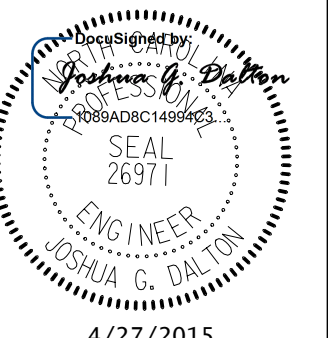
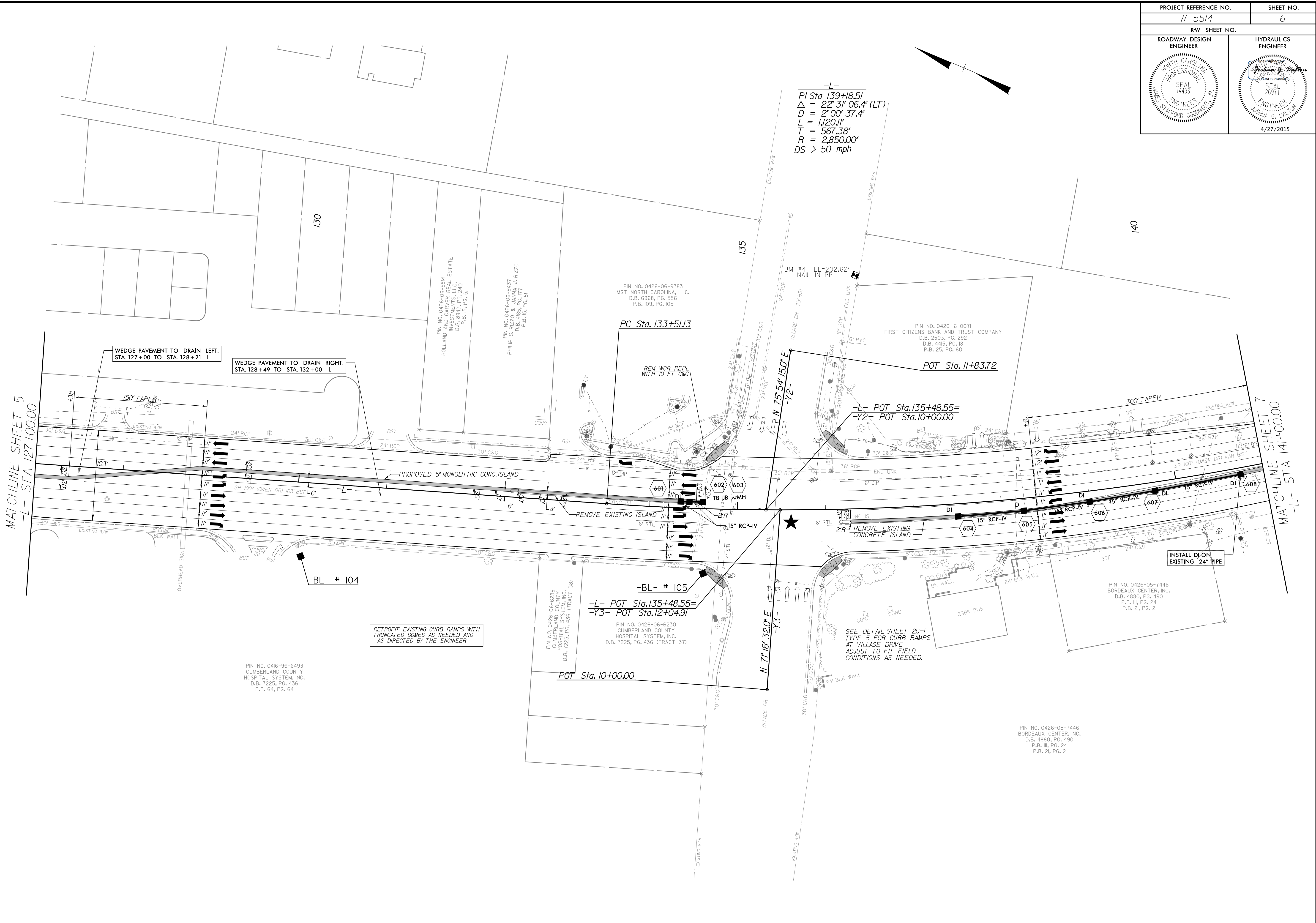


PROJECT REFERENCE NO. W-5514	SHEET NO. 6
RW SHEET NO.	
ROADWAY DESIGN ENGINEER	HYDRAULICS ENGINEER
	
	4/27/2015

5/14/99

4/27/2015 10:41:00 AM rdy_psh_06.dgn



-L-
 PI Sta. 139+18.51
 $\Delta = 22^\circ 31' 06.4''$ (LT)
 $D = 2^\circ 00' 37.4''$
 $L = 1,120.11'$
 $T = 567.38'$
 $R = 2,850.00'$
 $DS > 50$ mph

WEDGE PAVEMENT TO DRAIN LEFT.
 STA. 127+00 TO STA. 128+21 -L-

WEDGE PAVEMENT TO DRAIN RIGHT.
 STA. 128+49 TO STA. 132+00 -L

RETROFIT EXISTING CURB RAMPS WITH TRUNCATED DOMES AS NEEDED AND AS DIRECTED BY THE ENGINEER

SEE DETAIL SHEET 2C-1 TYPE 5 FOR CURB RAMPS AT VILLAGE DRIVE ADJUST TO FIT FIELD CONDITIONS AS NEEDED.

MATCHLINE SHEET 5
-L- STA 127+00.00

MATCHLINE SHEET 7
-L- STA 141+00.00

