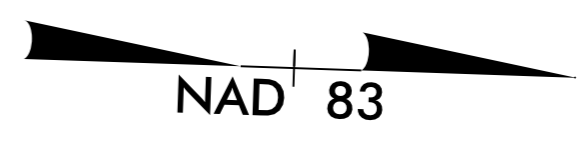


METRIC

CONST. REV.
R/W REV.

PROJECT REFERENCE NO. R-2413CA	SHEET NO. EC-18/CONST.9
R/W SHEET NO.	
ROADWAY DESIGN ENGINEER	HYDRAULICS ENGINEER

RIGHT-OF-WAY FOR THIS PROJECT HAS BEEN ACQUIRED UNDER PROJECT R-2413C

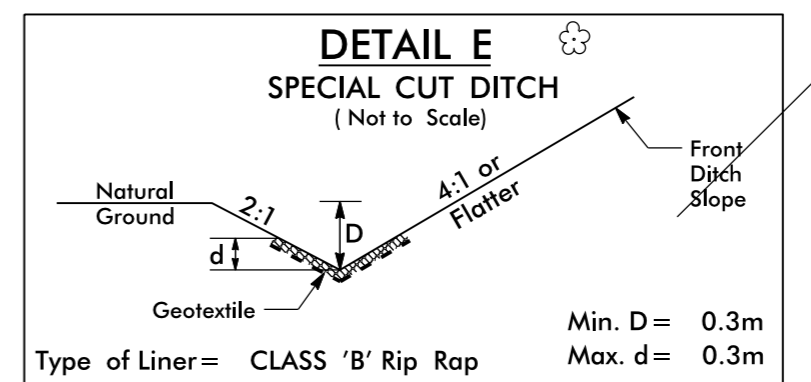
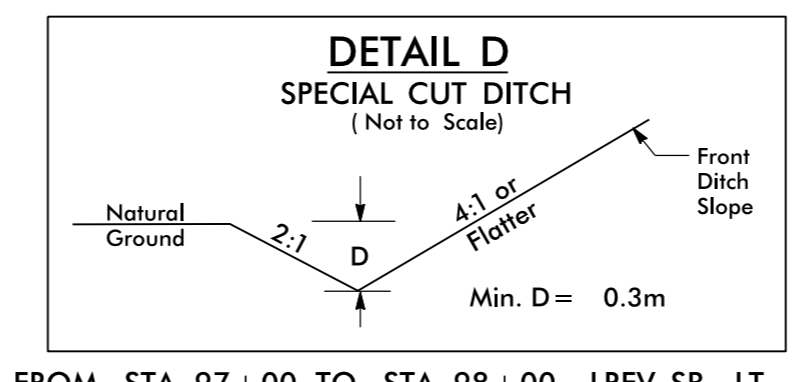
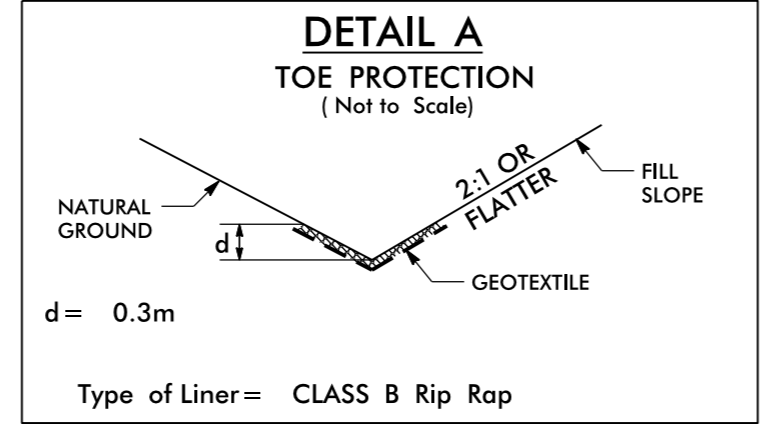
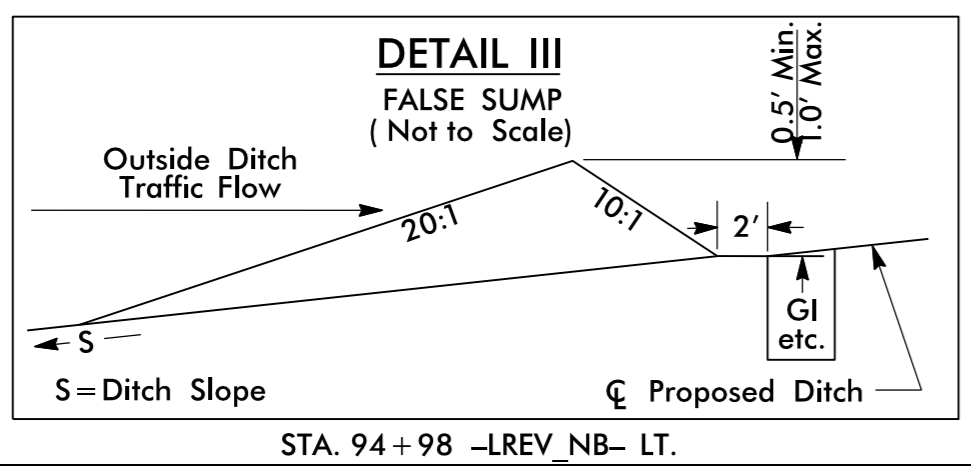
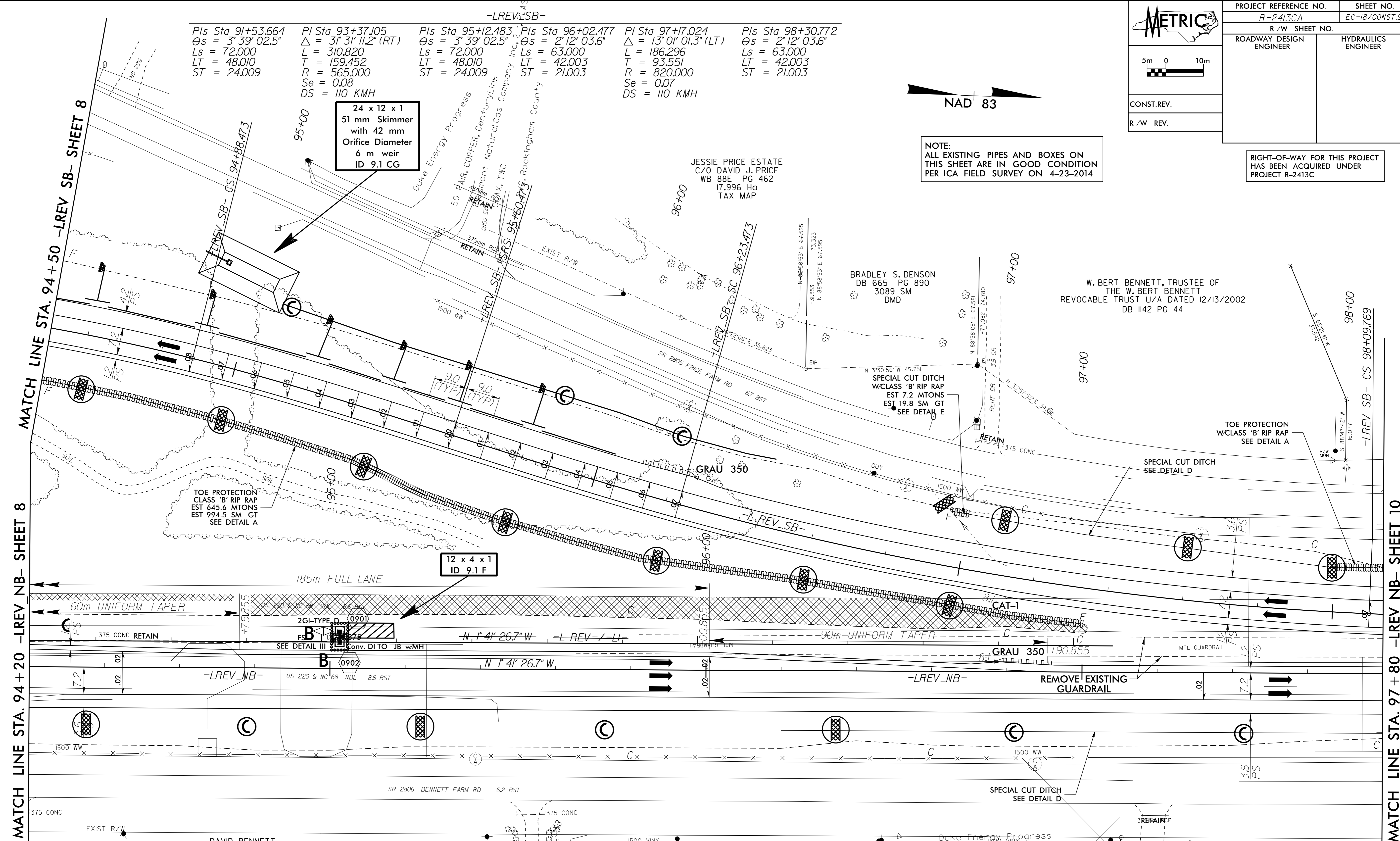


NOTE:
ALL EXISTING PIPES AND BOXES ON THIS SHEET ARE IN GOOD CONDITION PER ICA FIELD SURVEY ON 4-23-2014

Pls Sta	PI Sta	Pls Sta	PI Sta	PI Sta	Pls Sta
91+53.664	93+37.105	95+12.483	96+02.477	97+17.024	98+30.772
$\Theta_s = 3^\circ 39' 02.5''$	$\Delta = 3^\circ 31' 11.2''$ (RT)	$\Theta_s = 3^\circ 39' 02.5''$	$\Theta_s = 2^\circ 12' 03.6''$	$\Delta = 13^\circ 01' 01.3''$ (LT)	$\Theta_s = 2^\circ 12' 03.6''$
Ls = 72.000	L = 310.820	Ls = 72.000	Ls = 63.000	L = 186.296	Ls = 63.000
LT = 48.010	T = 159.452	LT = 48.010	LT = 42.003	T = 93.551	LT = 42.003
ST = 24.009	R = 565.000	ST = 24.009	ST = 21.003	R = 820.000	ST = 21.003
	Se = 0.08			Se = 0.07	
	DS = 110 KMH			DS = 110 KMH	

24 x 12 x 1
51 mm Skimmer
with 42 mm
Orifice Diameter
6 m weir
ID 9.1 CG

12 x 4 x 1
ID 9.1 F



PAVEMENT REMOVAL

SEE SHEET 16 FOR -LREV_NB- PROFILE
SEE SHEET 18 FOR -LREV_SB- PROFILE

8/17/2014
 IN: FEB-2015_13370...
 PROJECT: R-2413CA-EC-18/CONST.9
 DRAWING: R-2413CA-EC-18/CONST.9.dgn
 DATE: 2/13/2015 10:51:10 AM
 USER: JACOBSON

MATCH LINE STA. 94+20 -LREV_NB- SHEET 8

MATCH LINE STA. 94+50 -LREV_SB- SHEET 8

MATCH LINE STA. 97+80 -LREV_NB- SHEET 10