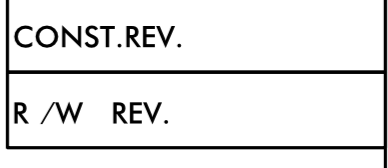


PROJECT REFERENCE NO. R-2413CA	SHEET NO. EC-9/CONST.9
R/W SHEET NO.	
ROADWAY DESIGN ENGINEER	HYDRAULICS ENGINEER

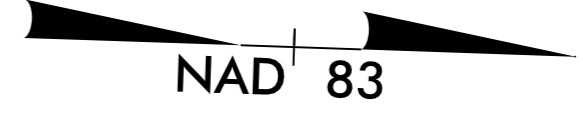


CONST. REV.

R/W REV.

RIGHT-OF-WAY FOR THIS PROJECT HAS BEEN ACQUIRED UNDER PROJECT R-2413C

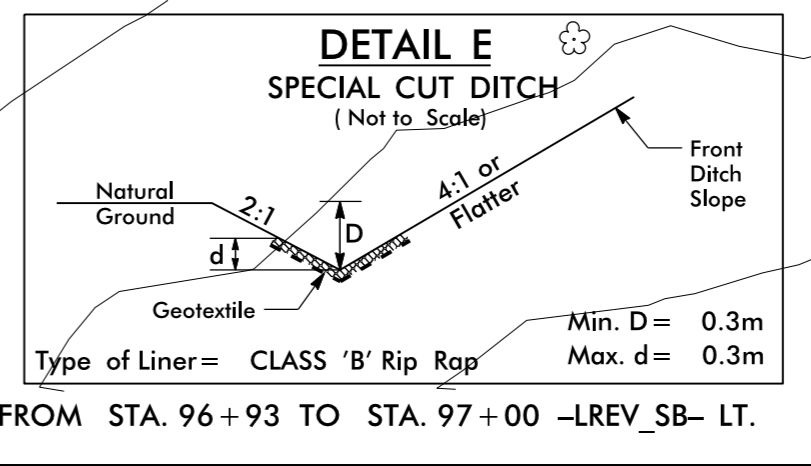
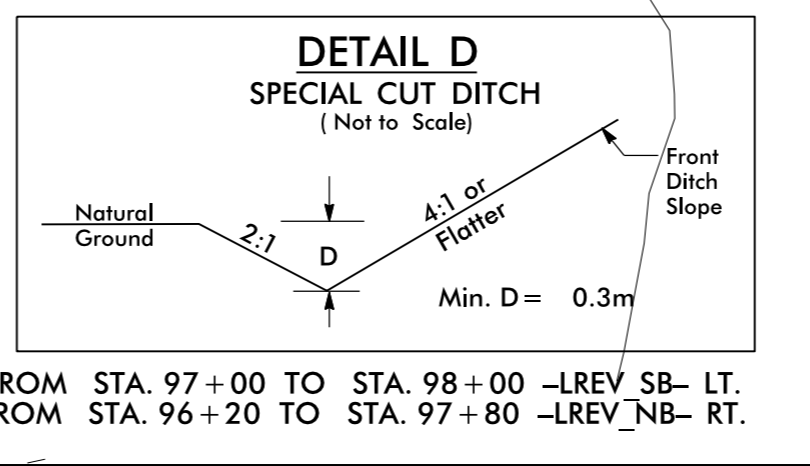
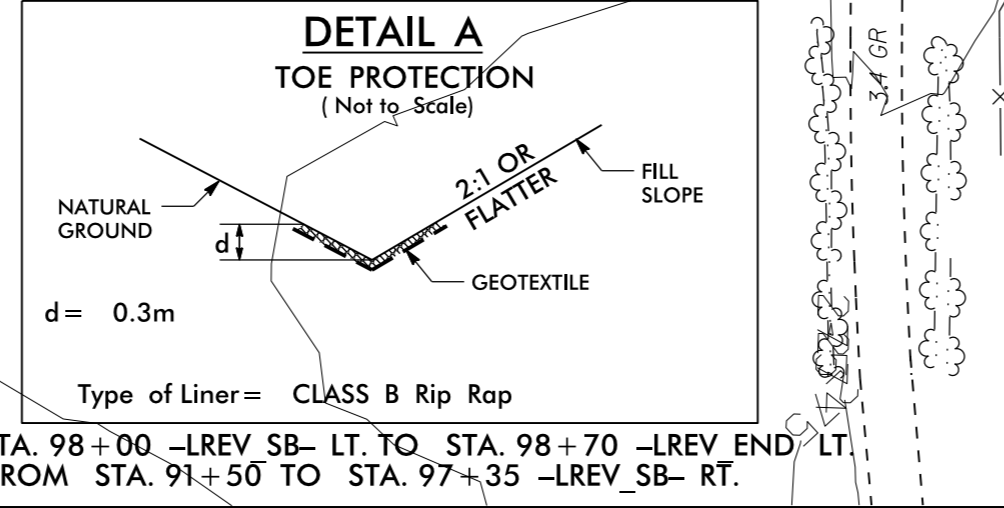
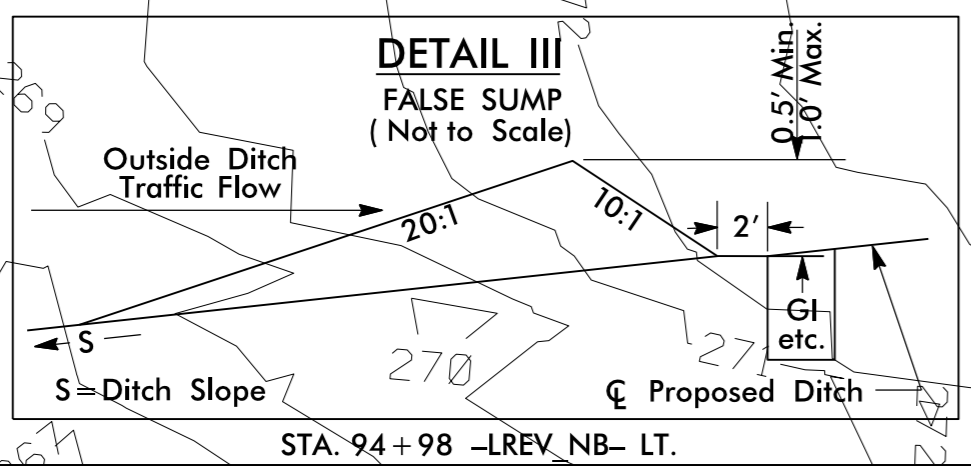
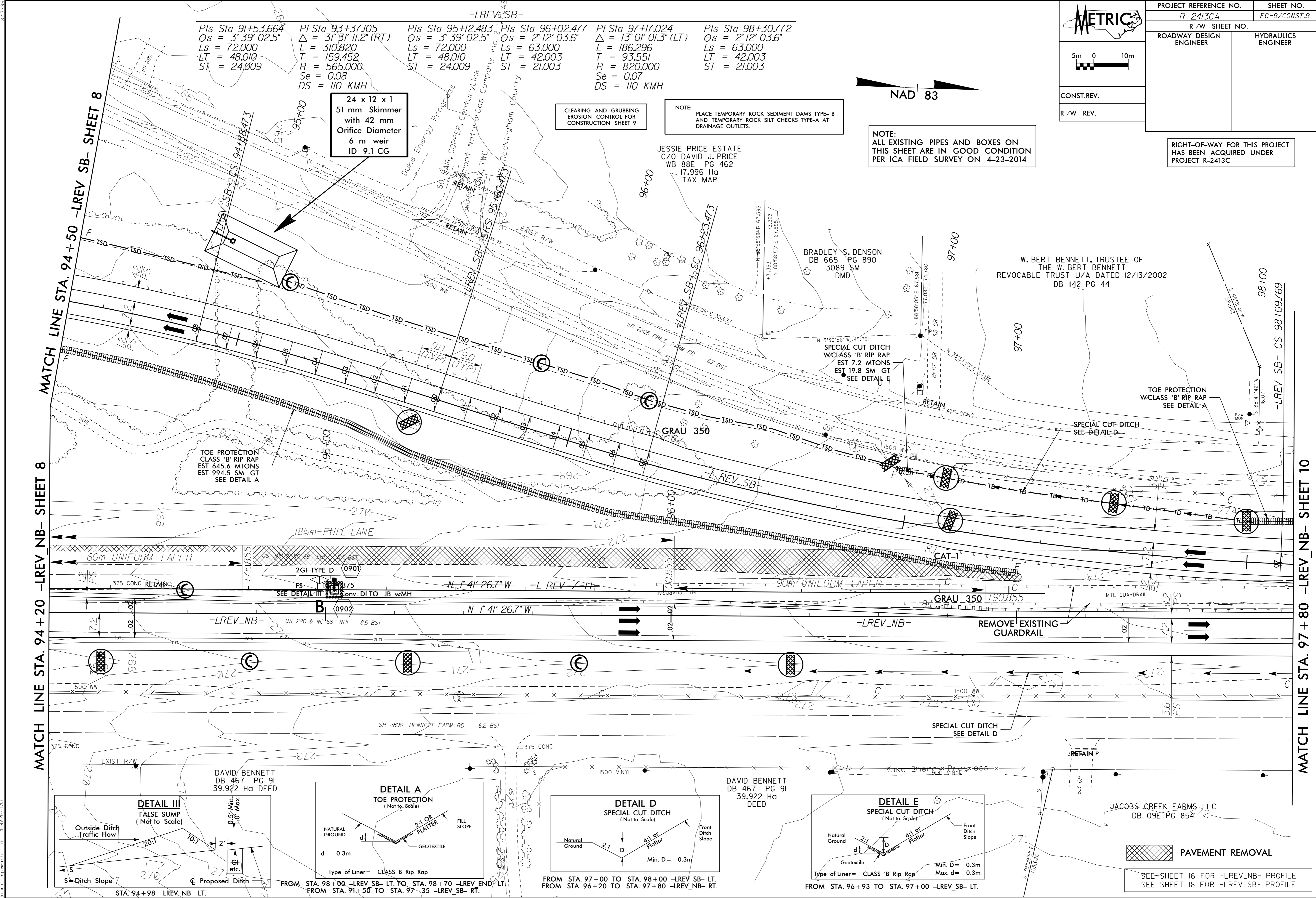
PIs Sta 91+53.664 $\theta_s = 3^\circ 39' 02.5''$ $L_s = 72.000$ $LT = 48.010$ $ST = 24.009$	PI Sta 93+37.105 $\Delta = 31^\circ 31' 11.2'' (RT)$ $L = 310.820$ $T = 159.452$ $R = 565.000$ $Se = 0.08$ $DS = 110 \text{ KM/H}$	PIs Sta 95+12.483 $\theta_s = 3^\circ 39' 02.5''$ $L_s = 72.000$ $LT = 48.010$ $ST = 24.009$	PIs Sta 96+02.477 $\theta_s = 2^\circ 12' 03.6''$ $L_s = 63.000$ $LT = 42.003$ $ST = 21.003$	PI Sta 97+17.024 $\Delta = 13^\circ 01' 01.3'' (LT)$ $L = 186.296$ $T = 93.551$ $R = 820.000$ $Se = 0.07$ $DS = 110 \text{ KM/H}$	PIs Sta 98+30.772 $\theta_s = 2^\circ 12' 03.6''$ $L_s = 63.000$ $LT = 42.003$ $ST = 21.003$
--	--	--	--	---	--



CLEARING AND GRUBBING EROSION CONTROL FOR CONSTRUCTION SHEET 9

NOTE: PLACE TEMPORARY ROCK SEDIMENT DAMS TYPE-B AND TEMPORARY ROCK SILT CHECKS TYPE-A AT DRAINAGE OUTLETS.

NOTE: ALL EXISTING PIPES AND BOXES ON THIS SHEET ARE IN GOOD CONDITION PER ICA FIELD SURVEY ON 4-23-2014



PAVEMENT REMOVAL

SEE SHEET 16 FOR -LREV_NB- PROFILE
 SEE SHEET 18 FOR -LREV_SB- PROFILE

11 FEB 2015 13:33
 R:\2413CA\DWG\CONST\2413CA_EC-9.CONST.9.dgn
 11 FEB 2015 13:33
 R:\2413CA\DWG\CONST\2413CA_EC-9.CONST.9.dgn