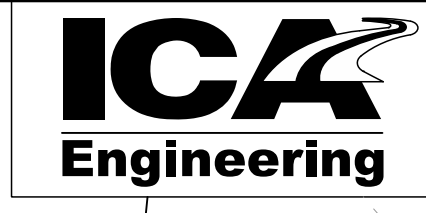
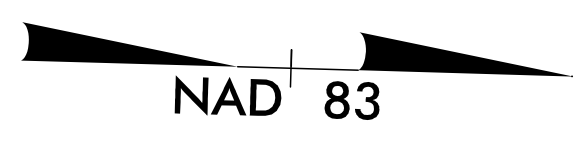
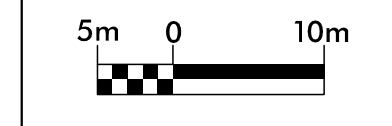


DETAIL OF TEMPORARY DETOUR

-LREVD_XOVR-

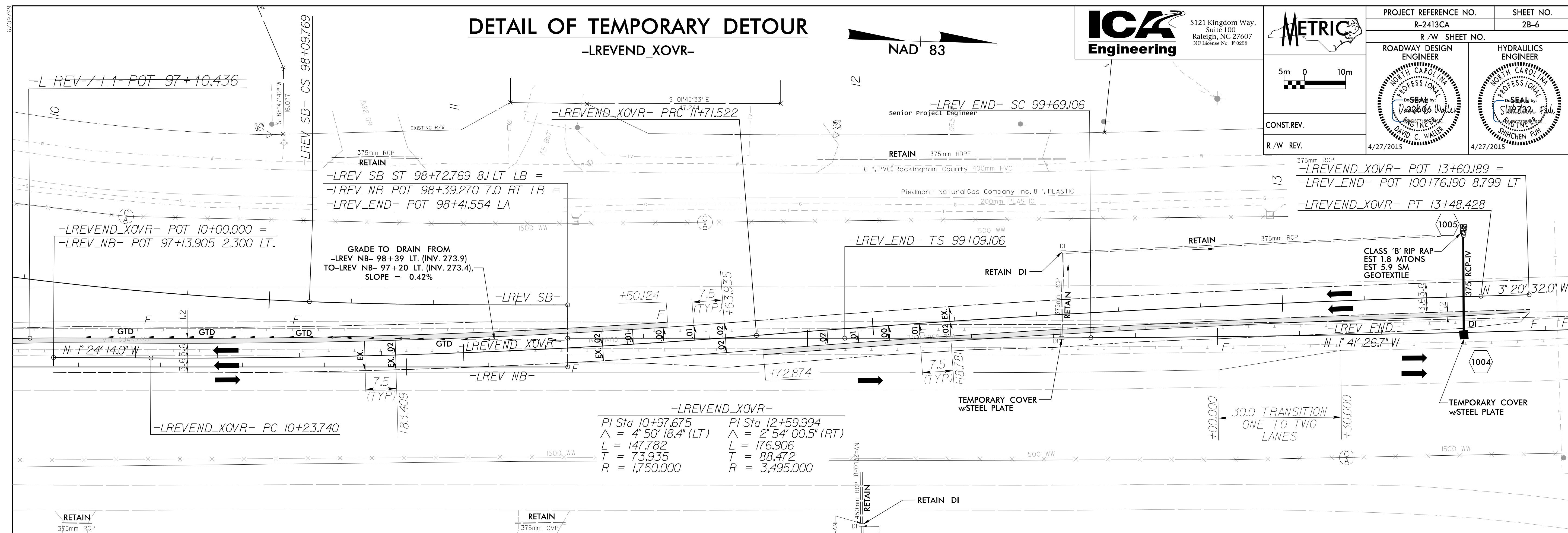


5121 Kingdom Way,
Suite 100
Raleigh, NC 27607
NC License No. P-9258



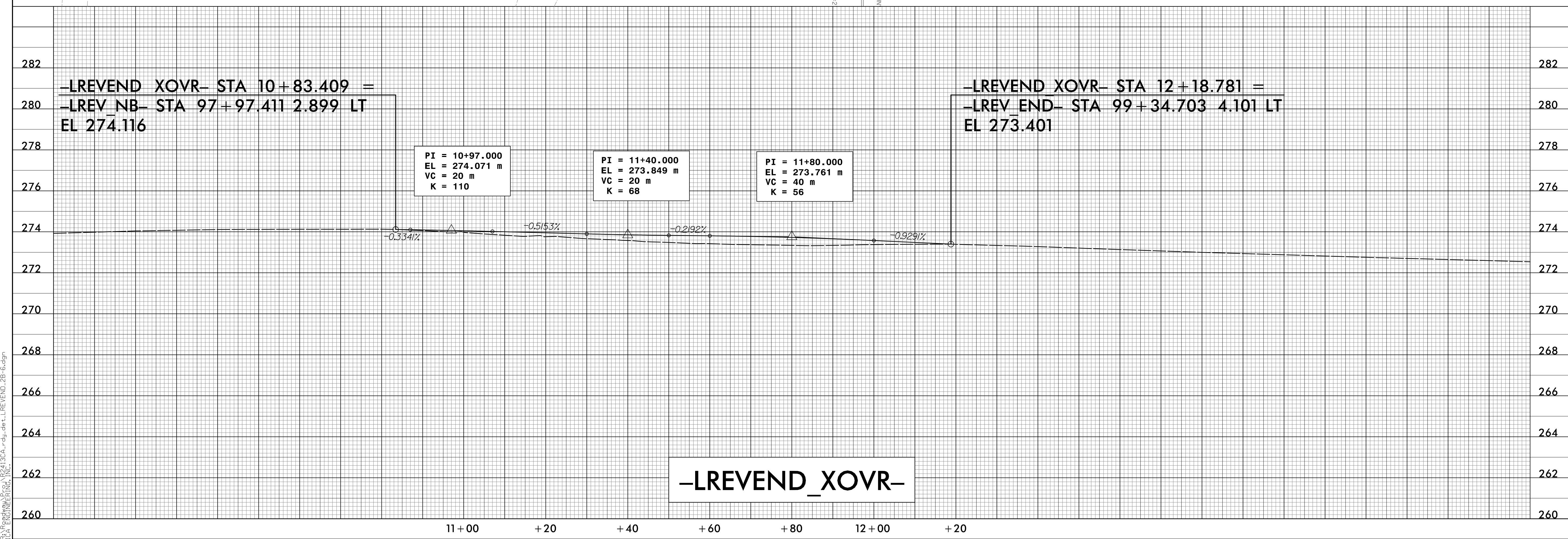
CONST.REV.
R/W REV.

PROJECT REFERENCE NO. R-2413CA	SHEET NO. 2B-6
R/W SHEET NO.	
ROADWAY DESIGN ENGINEER DAVID C. WALLER 4/27/2015	HYDRAULICS ENGINEER SHICHEN FU 4/27/2015



-LREVEND_XOVR-

PI Sta 10+97.675	PI Sta 12+59.994
$\Delta = 4' 50" 18.4" (LT)$	$\Delta = 2' 54" 00.5" (RT)$
L = 147.782	L = 176.906
T = 73.935	T = 88.472
R = 1,750.000	R = 3,495.000



3/13/2015
 P:\Projects\2413CA\rd\detour\LREVD_XOVR.dwg
 ICA ENGINEERING, INC.