

**This electronic collection of documents is provided
for the convenience of the user
and is Not a Certified Document –**

**The documents contained herein were originally issued
and sealed by the individuals whose names and license
numbers appear on each page, on the dates appearing
with their signature on that page.**

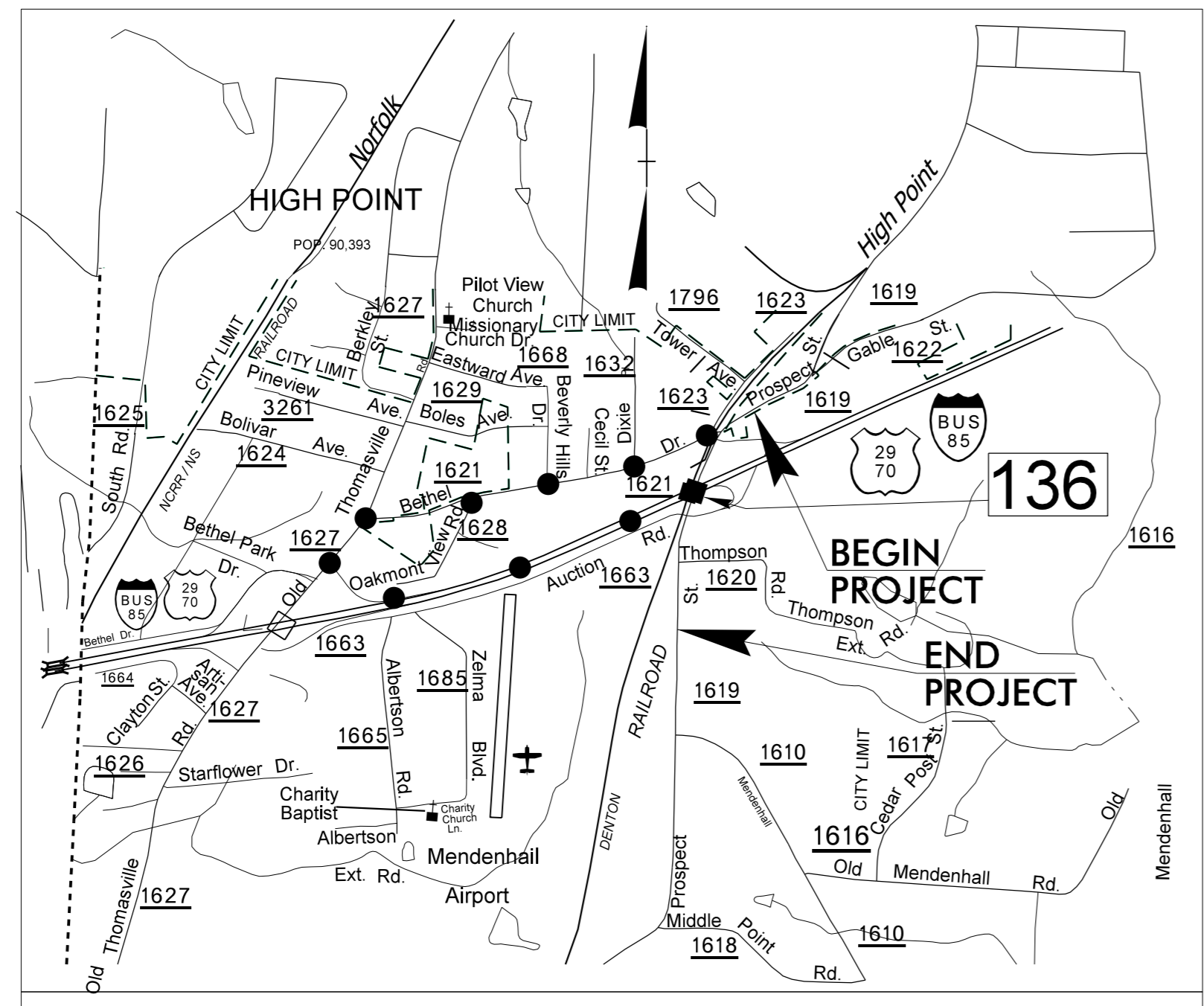
**This file or an individual page
shall not be considered a certified document.**

STATE OF NORTH CAROLINA
DIVISION OF HIGHWAYS

**UTILITIES BY OTHERS PLANS
RANDOLPH COUNTY**

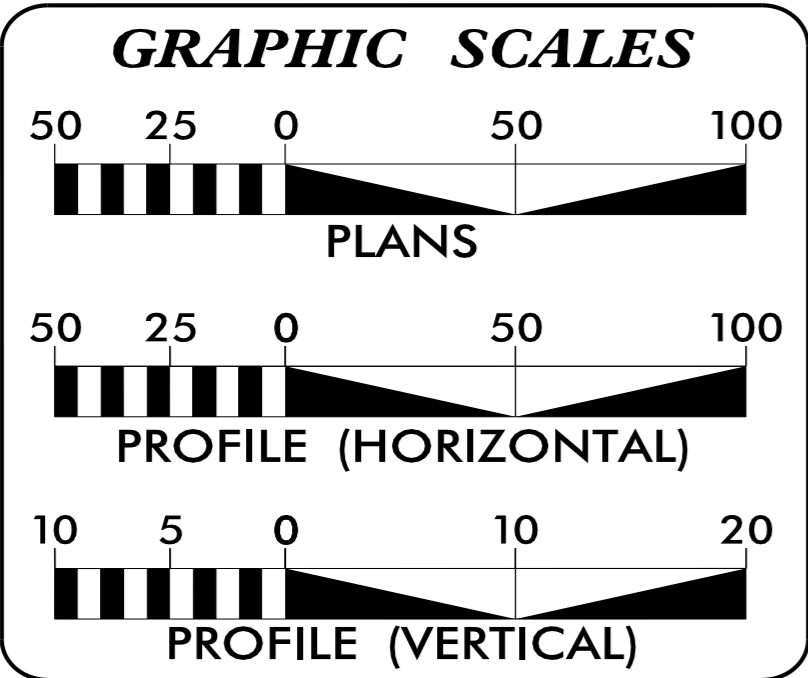
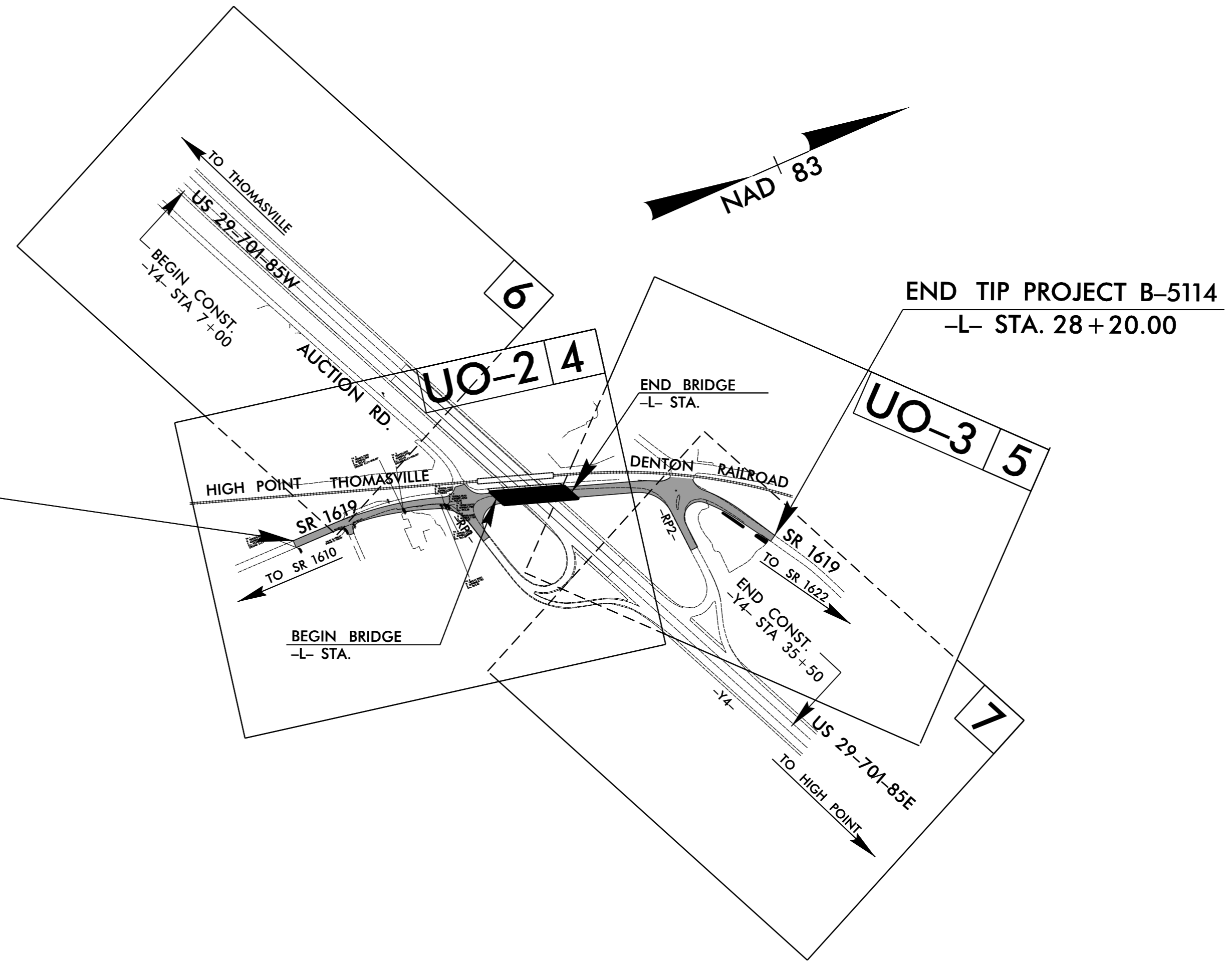
LOCATION: BRIDGE 136 OVER US 29-70I-85 BUSINESS ON
SR 1619 (PROSPECT STREET) IN HIGH POINT

TYPE OF WORK: UTILITY WORKS



VICINITY MAP

TIP PROJECT: B-5114




INDEX OF SHEETS

SHEET NO.	DESCRIPTION
UO-1	TITLE SHEET
UO-2 THRU UO-3	UTILITY BY OTHERS PLAN SHEETS

UTILITY OWNERS ON PROJECT

- (A) Duke Energy - Power
- (B) North State Communication - Telephone
- (C) Piedmont Natural Gas - Gas



PREPARED IN THE OFFICE OF:
**DIVISION OF HIGHWAYS
UTILITIES UNIT
UTILITIES ENGINEERING**

1555 MAIL SERVICES CENTER
RALEIGH, NC 27699-1555
PHONE (919) 707-6690
FAX (919) 250-4151

Roger Worthington, P.E. UTILITIES SECTION ENGINEER
Steve McKee, P.E. UTILITIES SQUAD LEADER PROJECT ENGINEER
Jamshid Hafshejani UTILITIES PROJECT DESIGNER

27-FEB-2015 13:16 R:\Utilities\Engineering\UB0\Proj\290_001_B5114_ut_1sh_U001.psh.dgn

UTILITIES BY OTHERS

NOTE:
ALL PROPOSED UTILITY WORK SHOWN ON THIS SHEET WILL BE DONE BY OTHERS. NO PAYMENT WILL BE MADE TO THE CONTRACTOR FOR PROPOSED UTILITY WORK SHOWN ON THIS SHEET.

NAD 83 COR. 19.6
DUKE POWER COMPANY
DB 535 PG 157

-L- POT Sta. 17+69.61
-RPI- POT Sta. 10+00.00
-YI- POT Sta. 17+06.71

END BRIDGE
-L- STA. 21+25.61
END APPROACH SLAB
-L- STA. 21+49.24

MATCH LINE -Y4- 17+00.00
SEE SHEET 6

BEGIN TIP PROJECT B-5114
-L- STA. 13+34.42

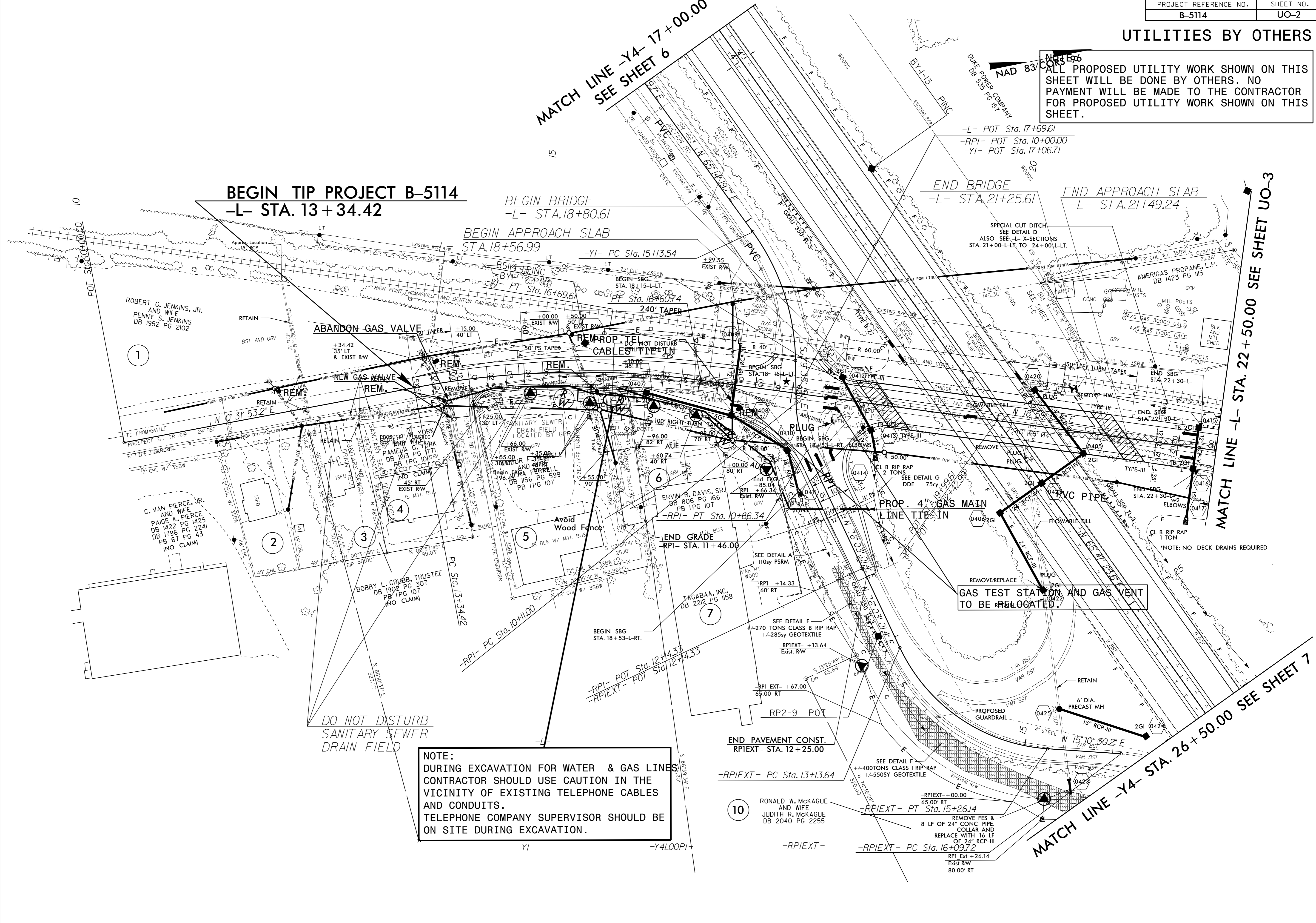
BEGIN BRIDGE
-L- STA. 18+80.61
BEGIN APPROACH SLAB
STA. 18+56.99

MATCH LINE -L- STA. 22+50.00
SEE SHEET UO-3

MATCH LINE -Y4- STA. 26+50.00
SEE SHEET 7

NOTE:
DURING EXCAVATION FOR WATER & GAS LINES CONTRACTOR SHOULD USE CAUTION IN THE VICINITY OF EXISTING TELEPHONE CABLES AND CONDUITS. TELEPHONE COMPANY SUPERVISOR SHOULD BE ON SITE DURING EXCAVATION.

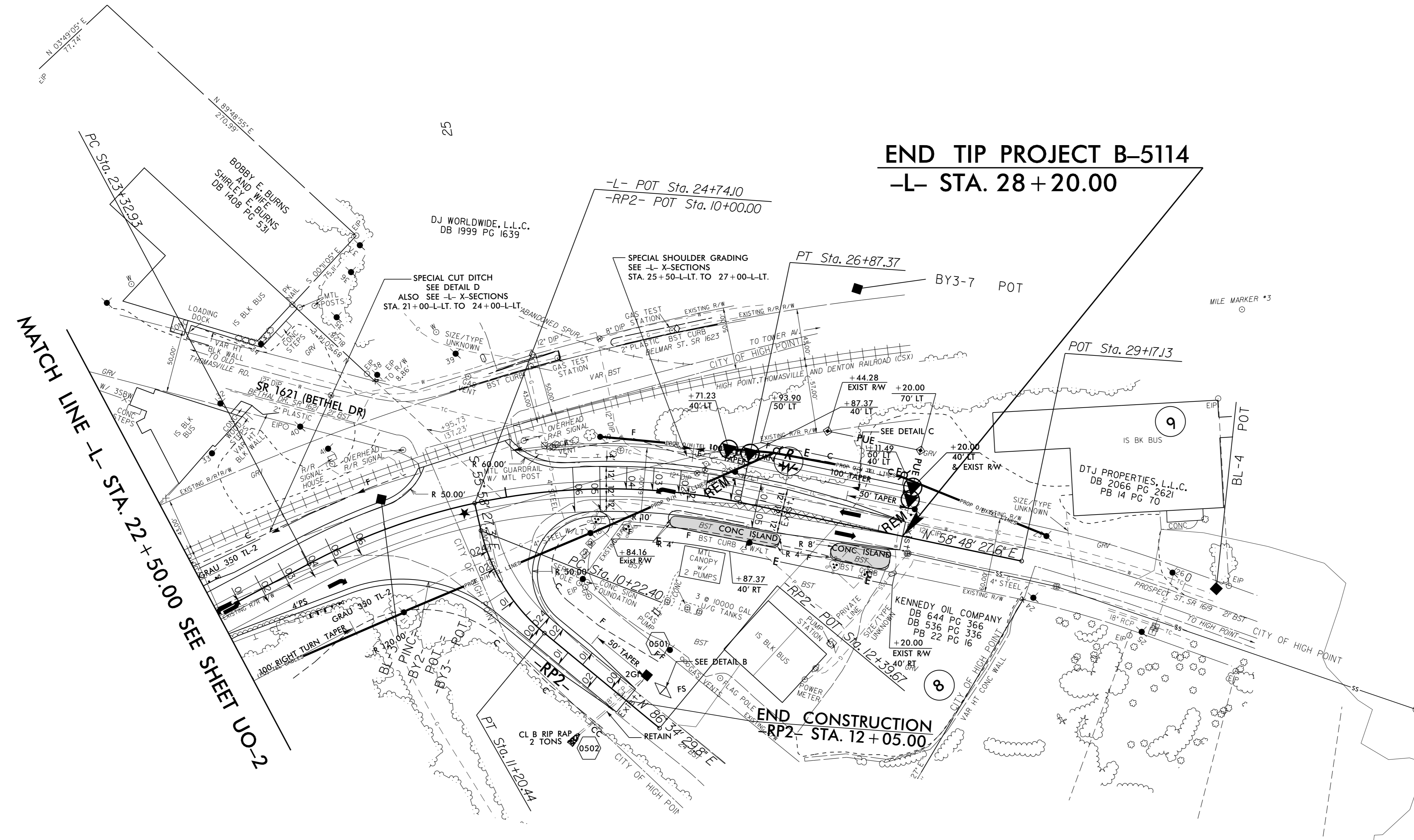
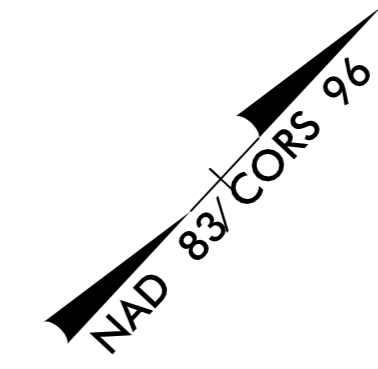
DO NOT DISTURB
SANITARY SEWER
DRAIN FIELD



5/14/99
27-FEB-2015 13:43
\\290.003.B5114-ut-rdy4-U002-psh.dgn
ps:\E:\PROJECTS\B5114\290.003.B5114-ut-rdy4-U002-psh.dgn

UTILITIES BY OTHERS

NOTE:
 ALL PROPOSED UTILITY WORK SHOWN ON THIS SHEET WILL BE DONE BY OTHERS. NO PAYMENT WILL BE MADE TO THE CONTRACTOR FOR PROPOSED UTILITY WORK SHOWN ON THIS SHEET.



5/14/99
 27-FEB-2015 13:44
 \\s:\e\ps\p11\proj\B5114\230_005_B5114_ut_rdy5_U003.psh.dgn