

**This electronic collection of documents is provided
for the convenience of the user
and is Not a Certified Document –**

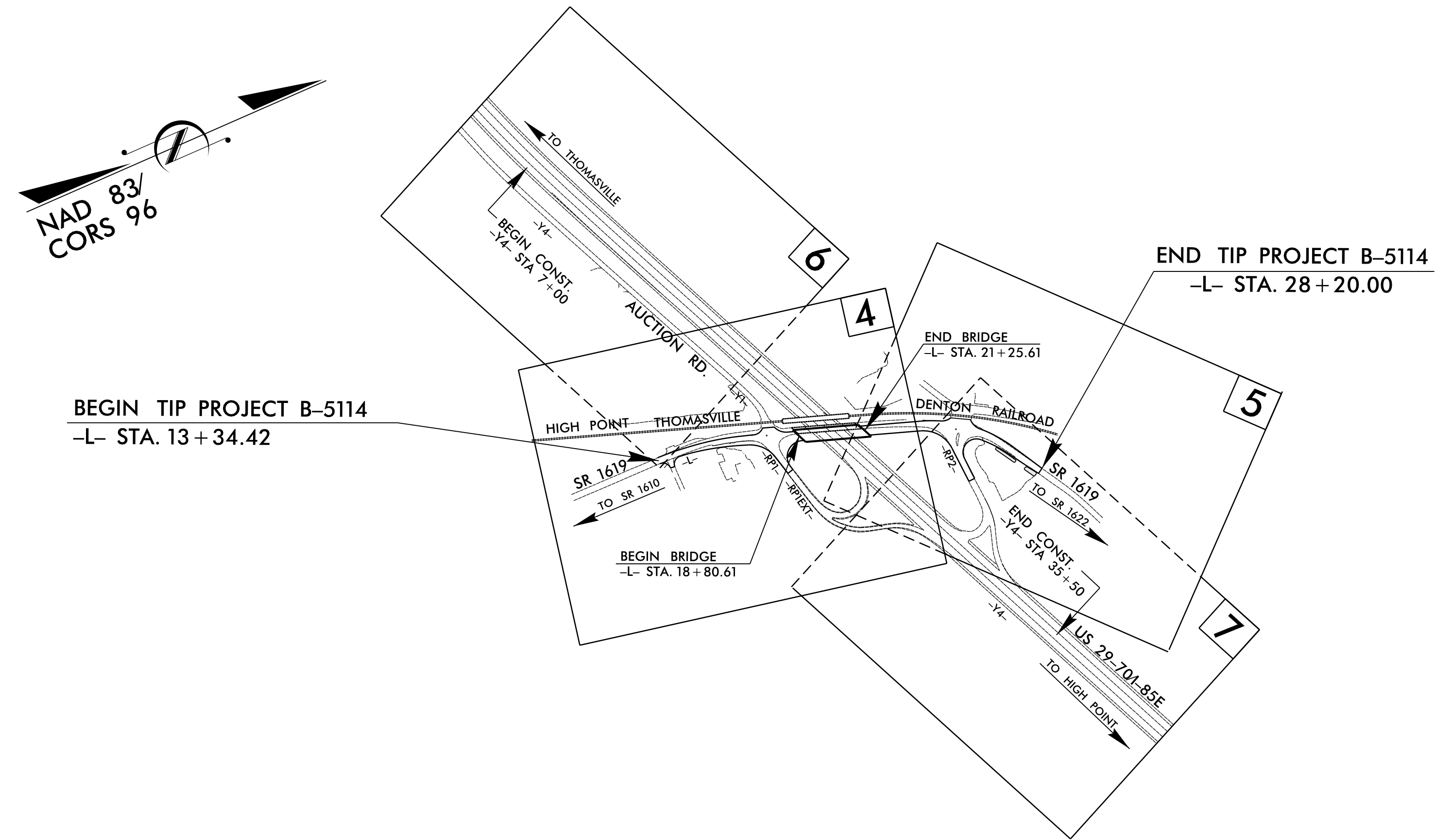
**The documents contained herein were originally issued
and sealed by the individuals whose names and license
numbers appear on each page, on the dates appearing
with their signature on that page.**

**This file or an individual page
shall not be considered a certified document.**

TIP PROJECT: B-5114

STATE OF NORTH CAROLINA
 DIVISION OF HIGHWAYS
 PLAN FOR PROPOSED
 HIGHWAY EROSION CONTROL
RANDOLPH COUNTY

**LOCATION: BRIDGE 136 OVER US 29-70A-85 BUSINESS ON
 SR 1619 (PROSPECT STREET) IN HIGH POINT**
TYPE OF WORK: GRADING, DRAINAGE, PAVING, STRUCTURE AND SIGNALS



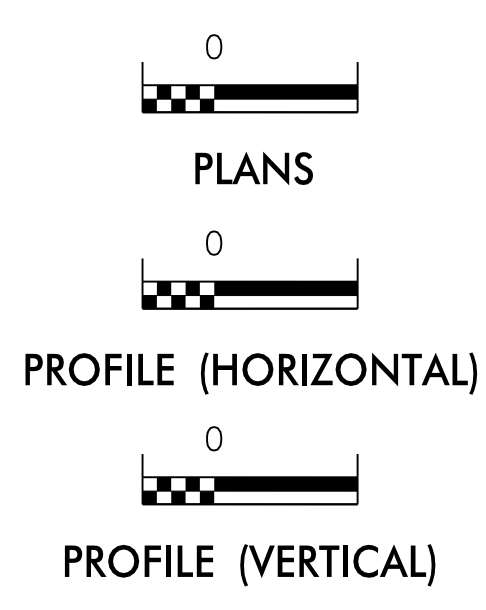
STATE	STATE PROJECT REFERENCE NO.	SHEET NO.	TOTAL SHEETS
N.C.	B-5114	EC-1	
STATE PROJ. NO.	F.A. PROJ. NO.	DESCRIPTION	

EROSION AND SEDIMENT CONTROL MEASURES

Std. #	Description	Symbol
1630.03	Temporary Silt Ditch	TD
1630.05	Temporary Diversion	TD
1605.01	Temporary Silt Fence	
1606.01	Special Sediment Control Fence	△△△△△
1622.01	Temporary Berms and Slope Drains	— T —
1630.02	Silt Basin Type B	▨
1633.01	Temporary Rock Silt Check Type-A	▩
	Temporary Rock Silt Check Type-A with Matting and Polyacrylamide (PAM)	▩
1633.02	Temporary Rock Silt Check Type-B	▩
	Wattle/Coir Fiber Wattle	— W —
	Wattle/Coir Fiber Wattle with Polyacrylamide (PAM)	— W —
1634.01	Temporary Rock Sediment Dam Type-A	▩
1634.02	Temporary Rock Sediment Dam Type-B	▩
1635.01	Rock Pipe Inlet Sediment Trap Type-A	⊓
1635.02	Rock Pipe Inlet Sediment Trap Type-B	⊓
1630.04	Stilling Basin	▭
1630.06	Special Stilling Basin	▭
	Rock Inlet Sediment Trap:	
1632.01	Type A	A
1632.02	Type B	B
1632.03	Type C	C
	Skimmer Basin	▭
	Tiered Skimmer Basin	▭
	Infiltration Basin	▭

**THIS PROJECT CONTAINS
 EROSION CONTROL PLANS
 FOR CLEARING AND
 GRUBBING PHASE OF
 CONSTRUCTION.**

GRAPHIC SCALE



ROADSIDE ENVIRONMENTAL UNIT
 DIVISION OF HIGHWAYS
 STATE OF NORTH CAROLINA

THESE EROSION AND SEDIMENT CONTROL PLANS COMPLY
 WITH THE REGULATIONS SET FORTH BY THE
 NCG-010000 GENERAL CONSTRUCTION PERMIT EFFECTIVE AUGUST 3, 2011
 ISSUED BY THE NORTH CAROLINA DEPARTMENT OF ENVIRONMENT AND
 NATURAL RESOURCES DIVISION OF WATER QUALITY.

Prepared in the Office of:
ROADSIDE ENVIRONMENTAL UNIT
 1 South Wilmington St.
 Raleigh, NC 27611
2012 STANDARD SPECIFICATIONS

Designed by:
Wes Chandler **3374**
 NAME LEVEL III CERTIFICATION NO.

Roadway Standard Drawings

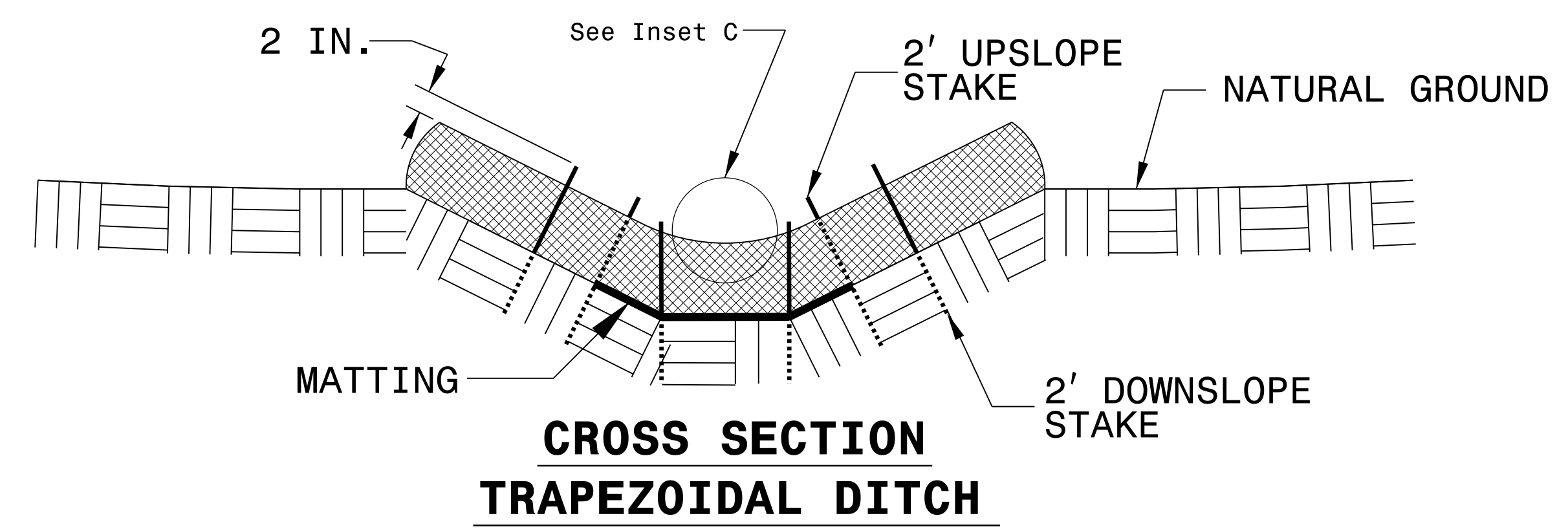
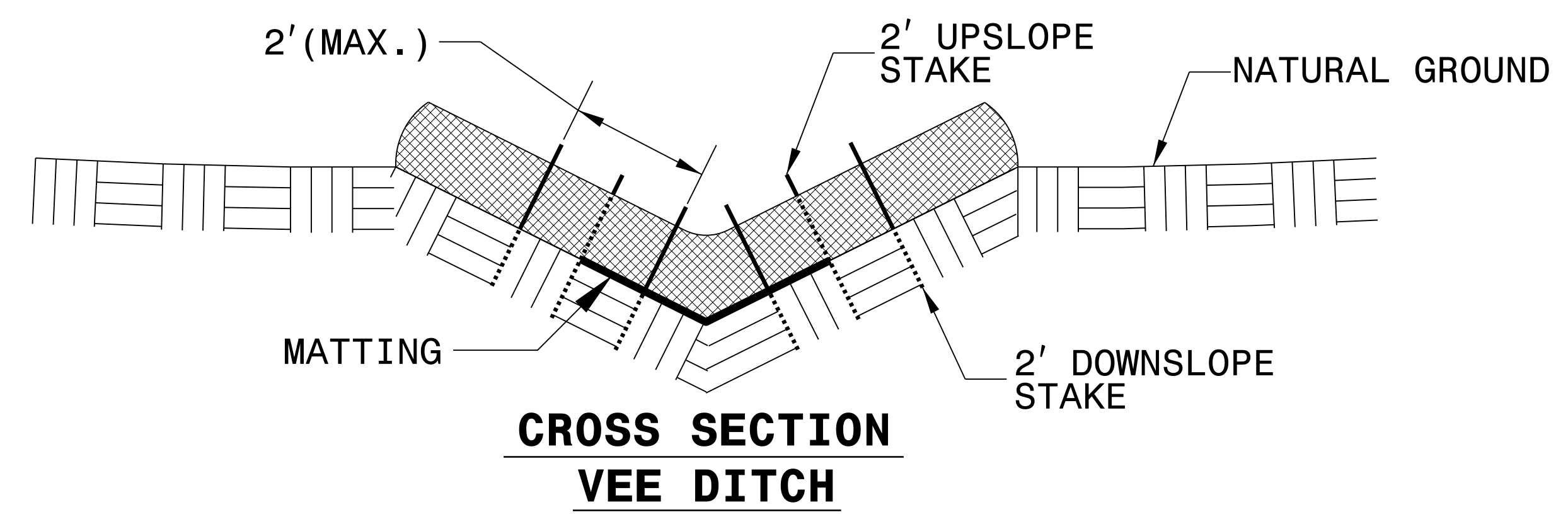
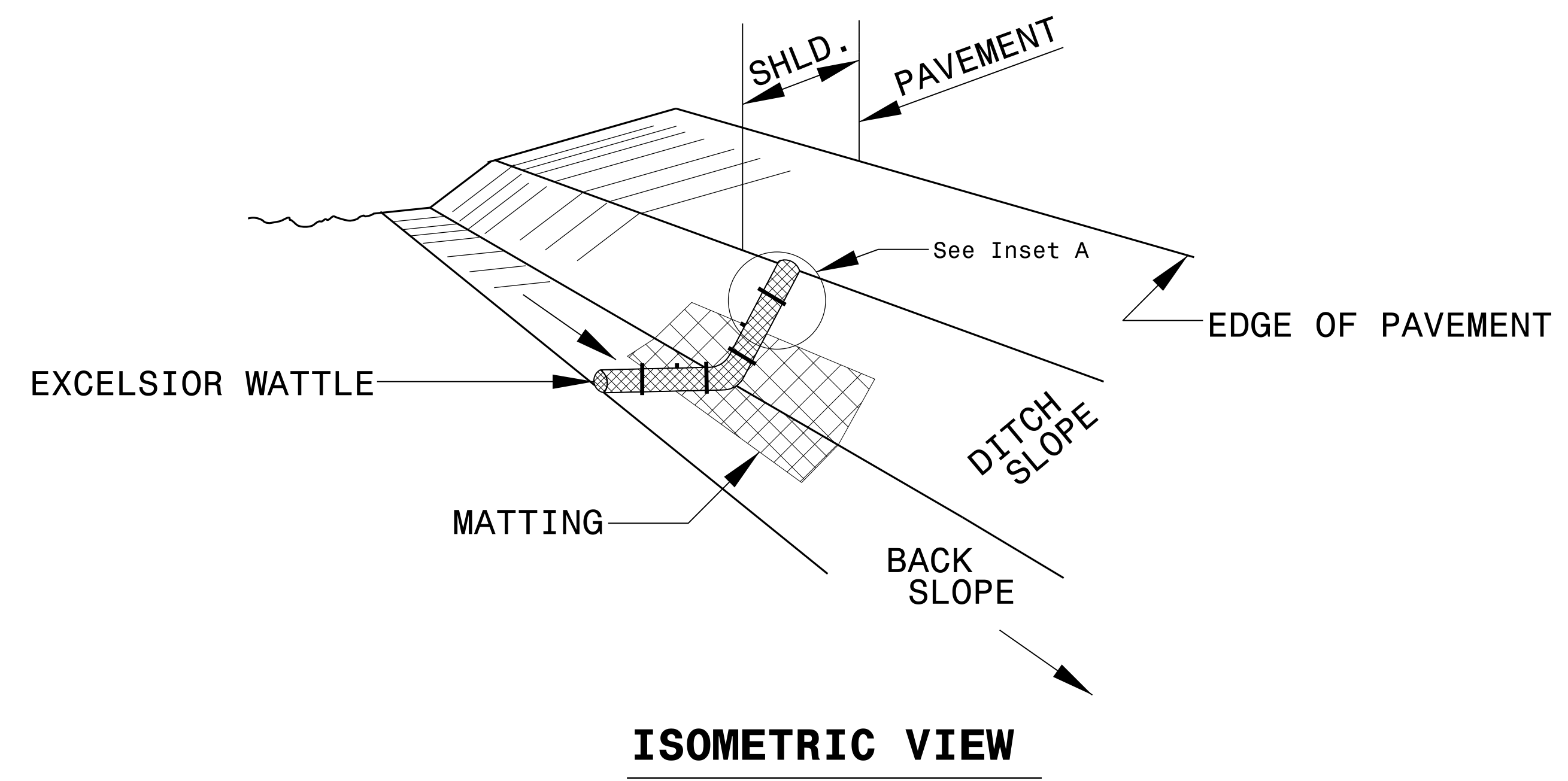
The following roadway english standards as appear in "Roadway Standard Drawings"- Roadway Design Unit - N. C. Department of Transportation - Raleigh, N. C., dated January 2012 and the latest revision thereto are applicable to this project and by reference hereby are considered a part of these plans.

1604.01 Railroad Erosion Control Detail	1632.01 Rock Inlet Sediment Trap Type A
1605.01 Temporary Silt Fence	1632.02 Rock Inlet Sediment Trap Type B
1606.01 Special Sediment Control Fence	1632.03 Rock Inlet Sediment Trap Type C
1607.01 Gravel Construction Entrance	1633.01 Temporary Rock Silt Check Type A
1622.01 Temporary Berms and Slope Drains	1633.02 Temporary Rock Silt Check Type B
1630.01 Riser Basin	1634.01 Temporary Rock Sediment Dam Type A
1630.02 Silt Basin Type B	1634.02 Temporary Rock Sediment Dam Type B
1630.03 Temporary Silt Ditch	1635.01 Rock Pipe Inlet Sediment Trap Type A
1630.04 Stilling Basin	1635.02 Rock Pipe Inlet Sediment Trap Type B
1630.05 Temporary Diversion	1640.01 Coir Fiber Baffle
1630.06 Special Stilling Basin	1645.01 Temporary Stream Crossing
1631.01 Matting Installation	

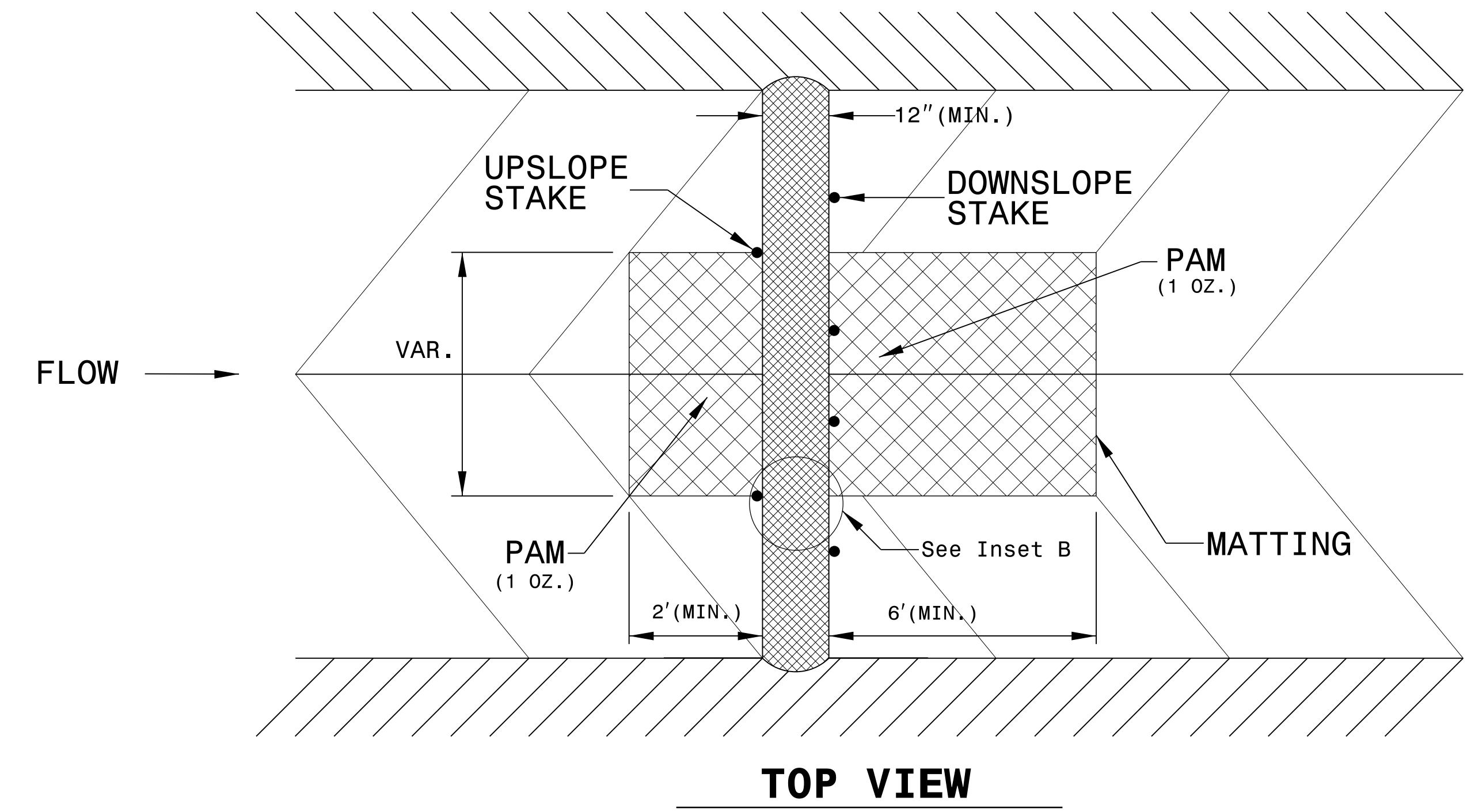
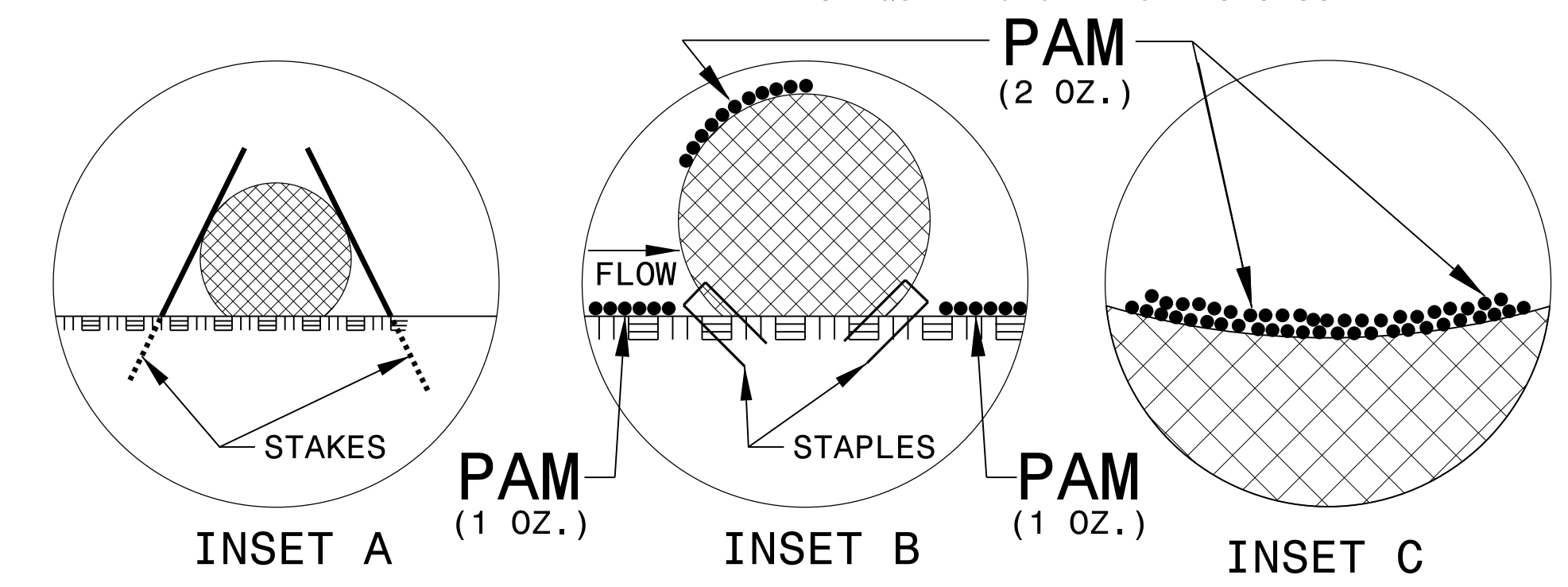
19-FEB-2015 10:41
 RA\NEV\PROJECTS\B-5114-EC-1\B-5114-EC-1.dgn
 1/20/2015 10:41 AM

PROJECT REFERENCE NO. B-5114	SHEET NO. EC-2
RW SHEET NO.	
ROADWAY DESIGN ENGINEER	HYDRAULICS ENGINEER

WATTLE WITH POLYACRYLAMIDE (PAM) DETAIL

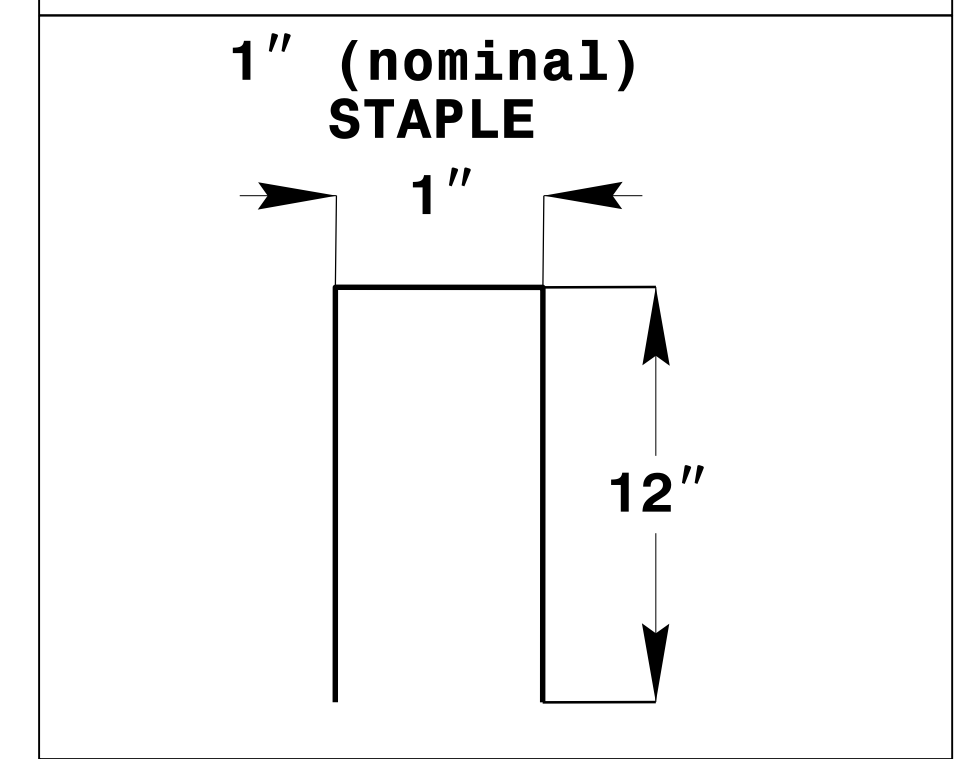
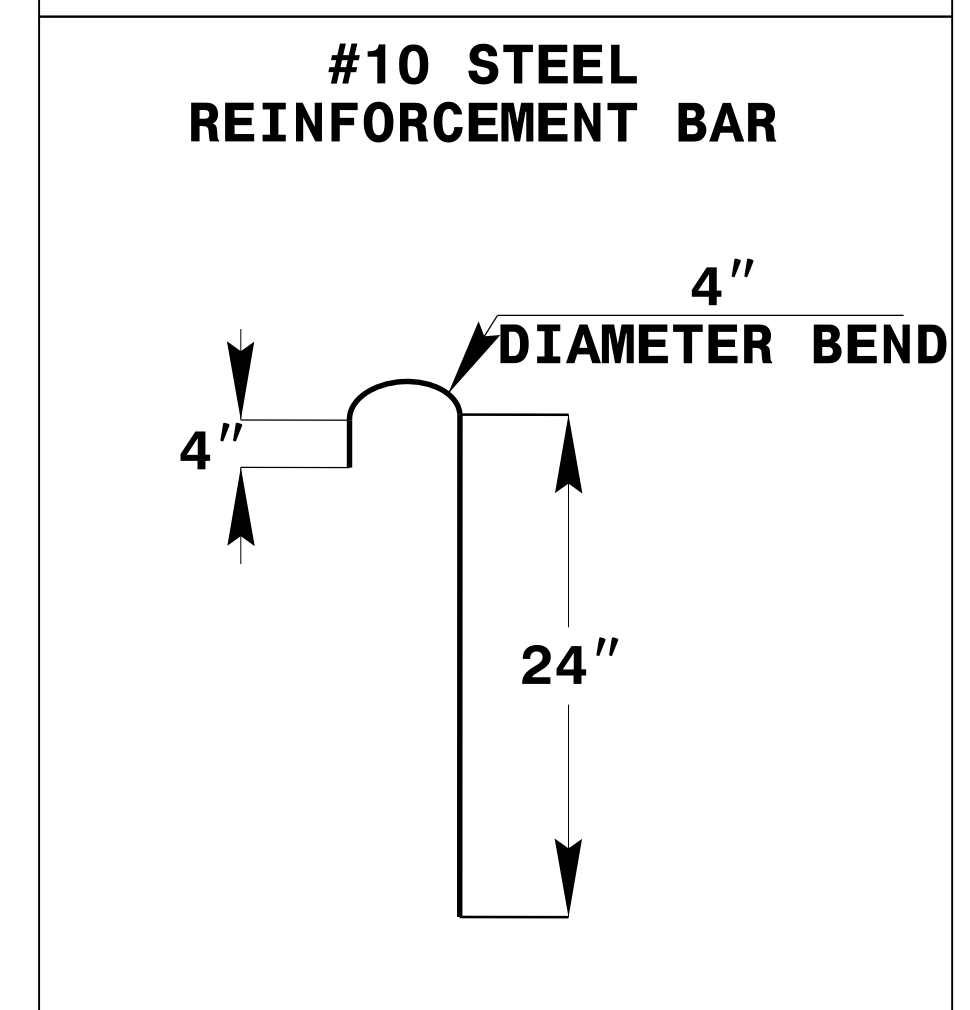
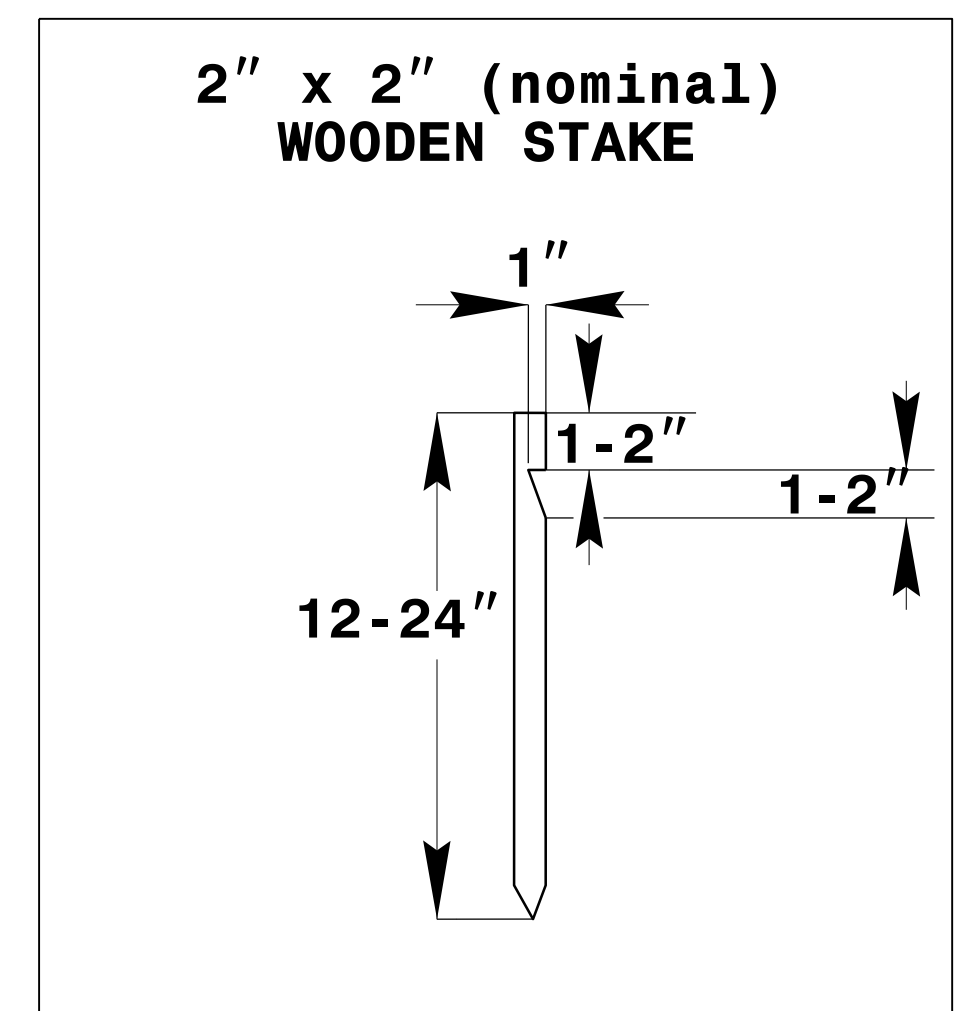
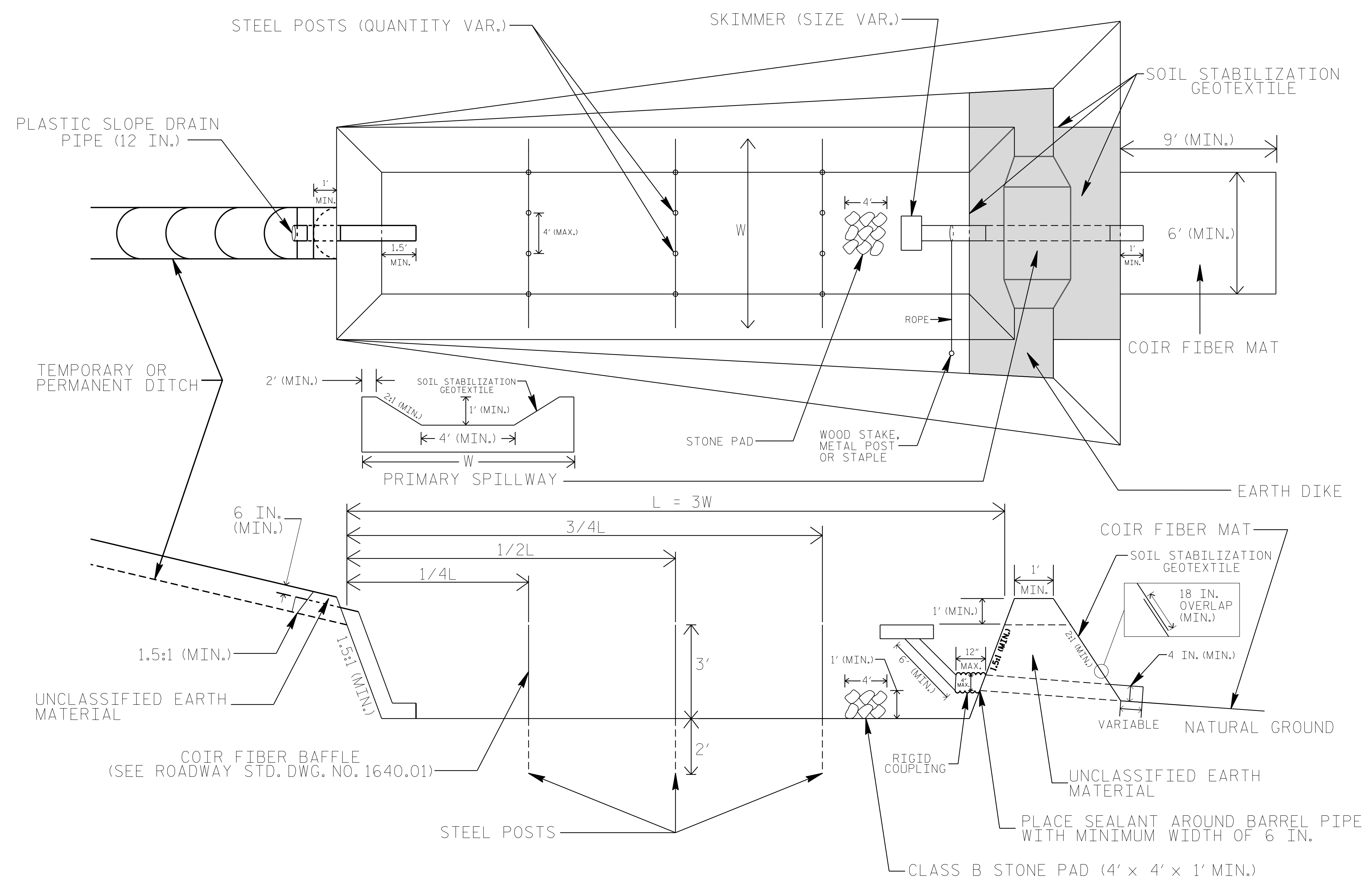


- NOTES:
- USE MINIMUM 12 IN. DIAMETER EXCELSIOR WATTLE.
 - USE 2 FT. WOODEN STAKES WITH A 2 IN. BY 2 IN. NOMINAL CROSS SECTION.
 - ONLY INSTALL WATTLE(S) TO A HEIGHT IN DITCH SO FLOW WILL NOT WASH AROUND WATTLE AND SCOUR DITCH SLOPES AND AS DIRECTED.
 - INSTALL A MINIMUM OF 2 UPSLOPE STAKES AND 4 DOWNSLOPE STAKES AT AN ANGLE TO WEDGE WATTLE TO BOTTOM OF DITCH.
 - PROVIDE STAPLES MADE OF 0.125 IN. DIAMETER STEEL WIRE FORMED INTO A U SHAPE NOT LESS THAN 12" IN LENGTH.
 - INSTALL STAPLES APPROXIMATELY EVERY 1 LINEAR FOOT ON BOTH SIDES OF WATTLE AND AT EACH END TO SECURE IT TO THE SOIL.
 - INSTALL MATTING IN ACCORDANCE WITH SECTION 1631 OF THE STANDARD SPECIFICATIONS.
 - PRIOR TO POLYACRYLAMIDE (PAM) APPLICATION, OBTAIN A SOIL SAMPLE FROM PROJECT LOCATION, AND FROM OFFSITE MATERIAL, AND ANALYZE FOR APPROPRIATE PAM FLOCCULANT TO BE APPLIED TO EACH WATTLE.
 - INITIALLY APPLY 2 OUNCES OF ANIONIC OR NEUTRALLY CHARGED PAM OVER WATTLE WHERE WATER WILL FLOW AND 1 OUNCE OF PAM ON MATTING ON EACH SIDE OF WATTLE. REAPPLY PAM AFTER EVERY RAINFALL EVENT THAT IS EQUAL TO OR EXCEEDS 0.50 IN.



PROJECT REFERENCE NO. B-5114	SHEET NO. EC-2A
RW SHEET NO.	
ROADWAY DESIGN ENGINEER	HYDRAULICS ENGINEER

SKIMMER BASIN WITH BAFFLES DETAIL



COIR FIBER MAT ANCHOR OPTIONS

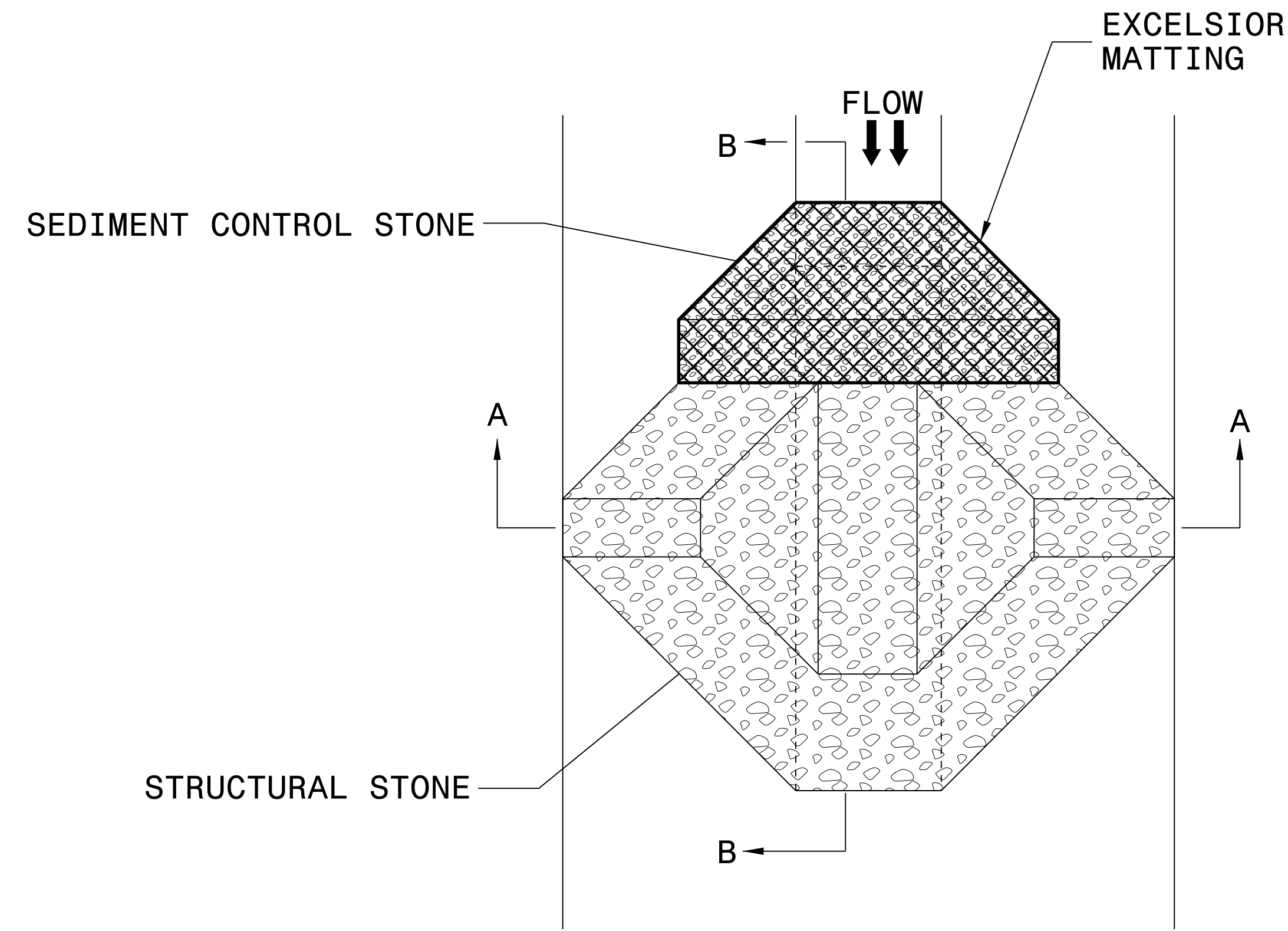
NOTES

1. SEED AND PLACE MATTING FOR EROSION CONTROL ON INTERIOR AND EXTERIOR SIDESLOPES.
2. LIMIT EARTH DIKE HEIGHT TO 5 FT.
3. FOR BASIN DEPTH OF 3 FT., THE MINIMUM BASIN WIDTH SHALL BE 9 FT.
4. DETERMINE PRIMARY SPILLWAY WEIR LENGTH (FT.) USING $Q/0.4$, WHERE Q IS FLOW RATE (CFS) INTO BASIN.
5. PLASTIC SLOPE DRAIN PIPE AT INLET OF BASIN MAY BE REPLACED BY FILTRATION GEOTEXTILE OR TARP AS DIRECTED.
6. SOIL STABILIZATION GEOTEXTILE FOR PRIMARY SPILLWAY SHALL BE ONE CONTINUOUS PIECE OF MATERIAL OR OVERLAPPED 18 IN. (MIN.).

NOT TO SCALE

PROJECT REFERENCE NO. B-5114	SHEET NO. EC-2B
RW SHEET NO.	
ROADWAY DESIGN ENGINEER	HYDRAULICS ENGINEER

TEMPORARY ROCK SILT CHECK TYPE 'A' WITH EXCELSIOR MATTING AND POLYACRYLAMIDE (PAM)



PLAN

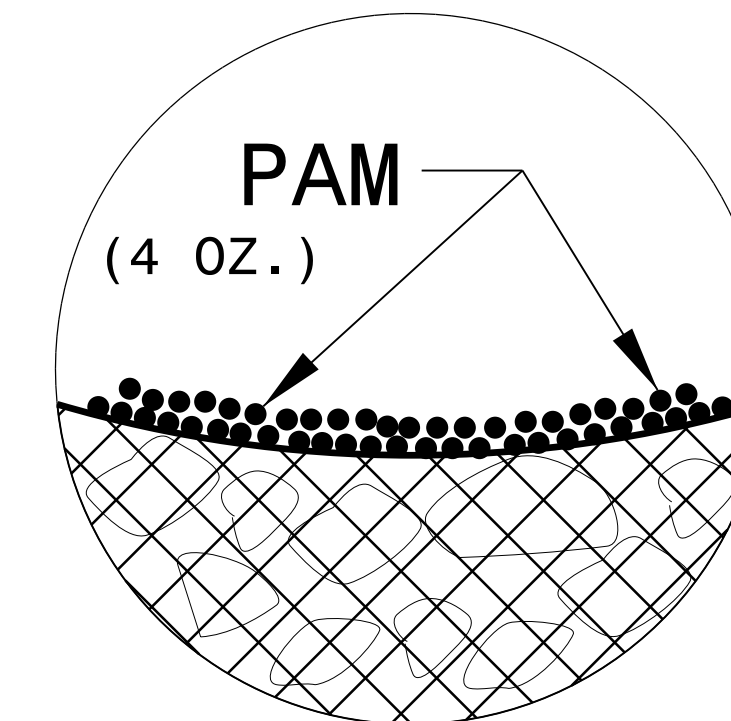
NOTES:

INSTALL TEMPORARY ROCK SILT CHECK TYPE A IN ACCORDANCE WITH ROADWAY STANDARD DRAWING NO. 1633.01.

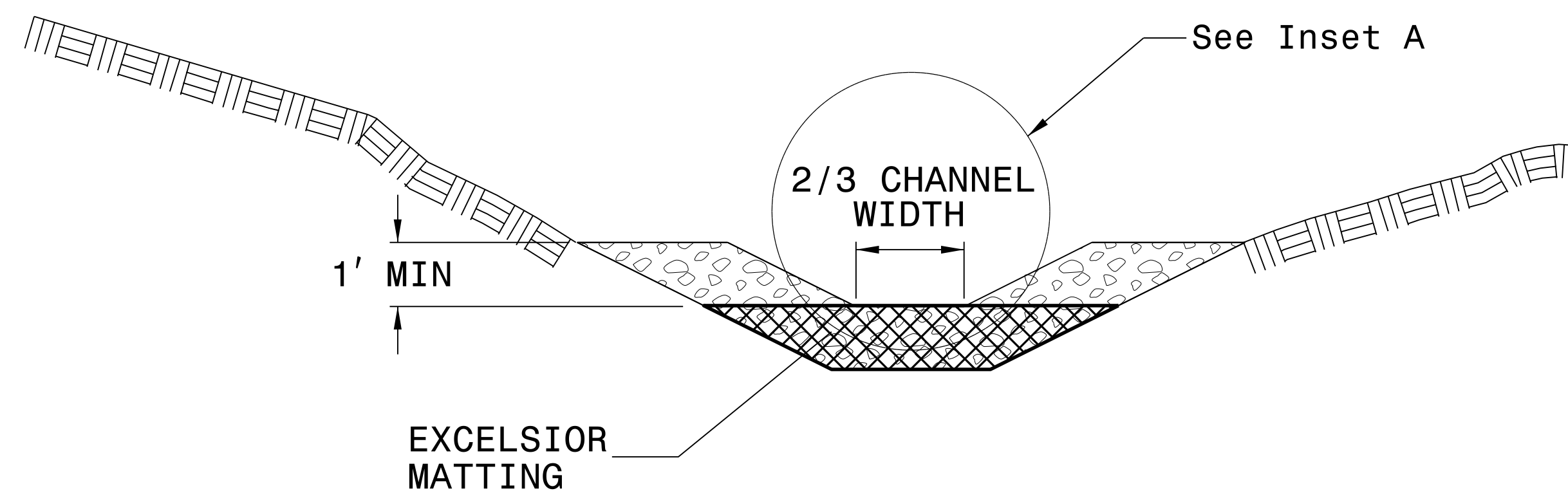
USE EXCELSIOR FOR MATTING MATERIAL AND ANCHOR MATTING SECTION AT TOP AND BOTTOM WITH CLASS B STONE.

PRIOR TO POLYACRYLAMIDE (PAM) APPLICATION, OBTAIN A SOIL SAMPLE FROM PROJECT LOCATION, AND FROM OFFSITE MATERIAL, AND ANALYZE FOR APPROPRIATE PAM FLOCCULANT TO BE APPLIED TO EACH ROCK SILT CHECK.

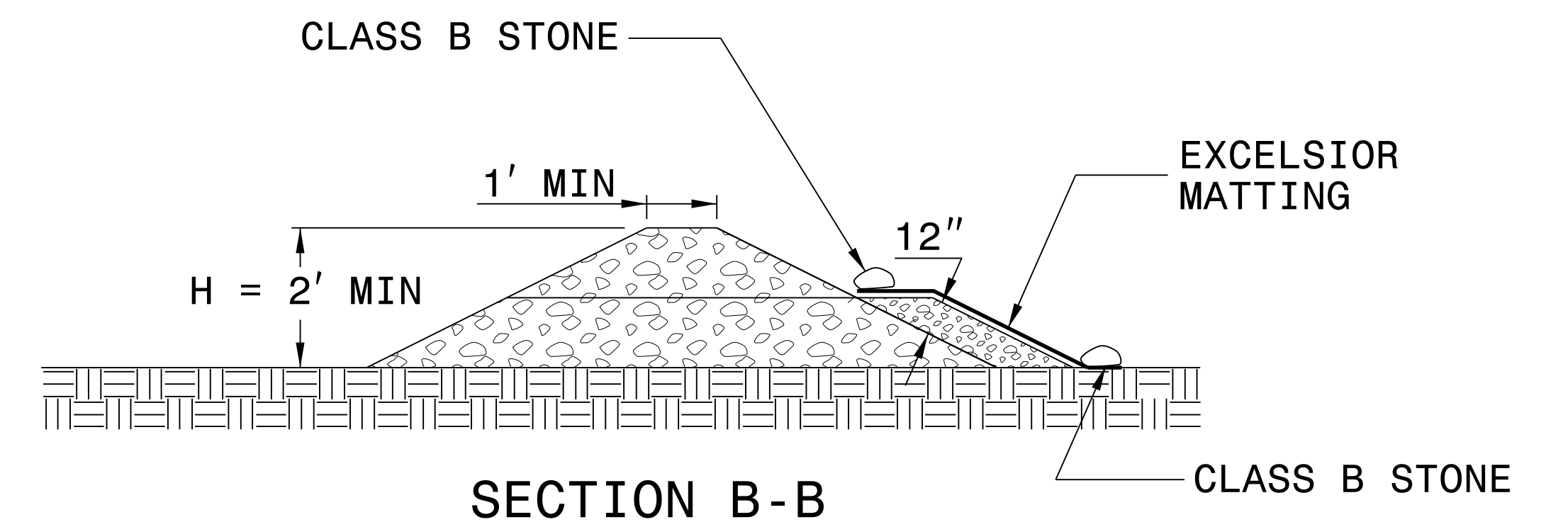
INITIALLY APPLY 4 OUNCES OF POLYACRYLAMIDE (PAM) TO TOP OF MATTING SECTION AND AFTER EVERY RAINFALL EVENT THAT EQUALS OR EXCEEDS 0.50 INCHES.



INSET A



SECTION A-A



SECTION B-B

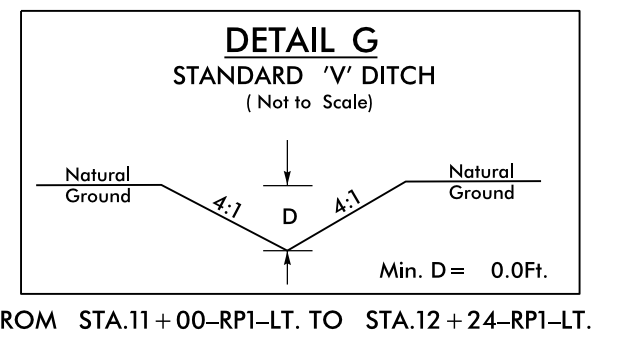
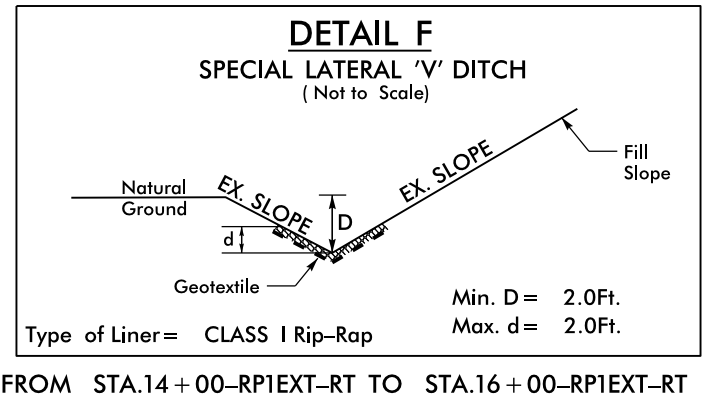
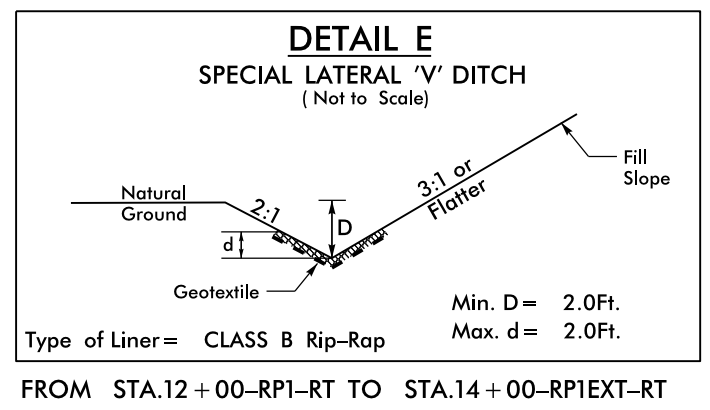
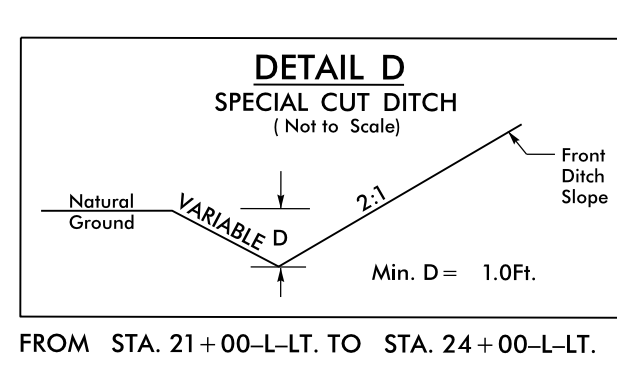
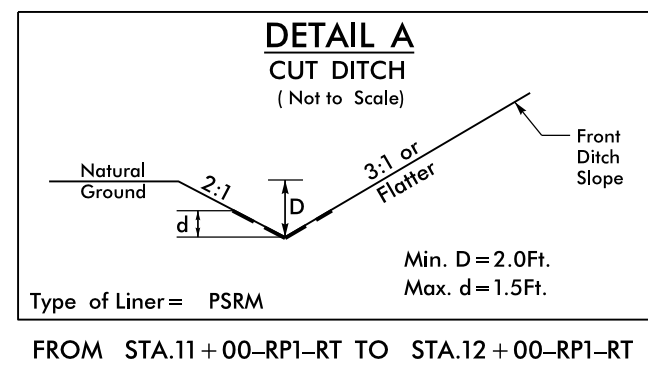
NOT TO SCALE

DIVISION OF HIGHWAYS
STATE OF NORTH CAROLINA

PROJECT REFERENCE NO. <i>B-5114</i>	SHEET NO. <i>EC-3A</i>
ROADWAY DESIGN ENGINEER	HYDRAULICS ENGINEER

SOIL STABILIZATION TIMEFRAMES

<i>SITE DESCRIPTION</i>	<i>STABILIZATION TIME</i>	<i>TIMEFRAME EXCEPTIONS</i>
PERIMETER DIKES, SWALES, DITCHES AND SLOPES	7 DAYS	NONE
HIGH QUALITY WATER (HQW) ZONES	7 DAYS	NONE
SLOPES STEEPER THAN 3:1	7 DAYS	IF SLOPES ARE 10' OR LESS IN LENGTH AND ARE NOT STEEPER THAN 2:1, 14 DAYS ARE ALLOWED.
SLOPES 3:1 OR FLATTER	14 DAYS	7 DAYS FOR SLOPES GREATER THAN 50' IN LENGTH.
ALL OTHER AREAS WITH SLOPES FLATTER THAN 4:1	14 DAYS	NONE, EXCEPT FOR PERIMETERS AND HQW ZONES.



CAROLINA THOMAS DEVELOPMENT, LLC
DB 2290 PG 2012

PROJECT REFERENCE NO.	SHEET NO.
B-5114	EC-4/CONST.4
RW SHEET NO.	
ROADWAY DESIGN ENGINEER	HYDRAULICS ENGINEER

NOTE:
PLACE TEMPORARY ROCK SEDIMENT DAMS TYPE - B AND TEMPORARY ROCK SILT CHECKS TYPE - A AT DRAINAGE OUTLETS.

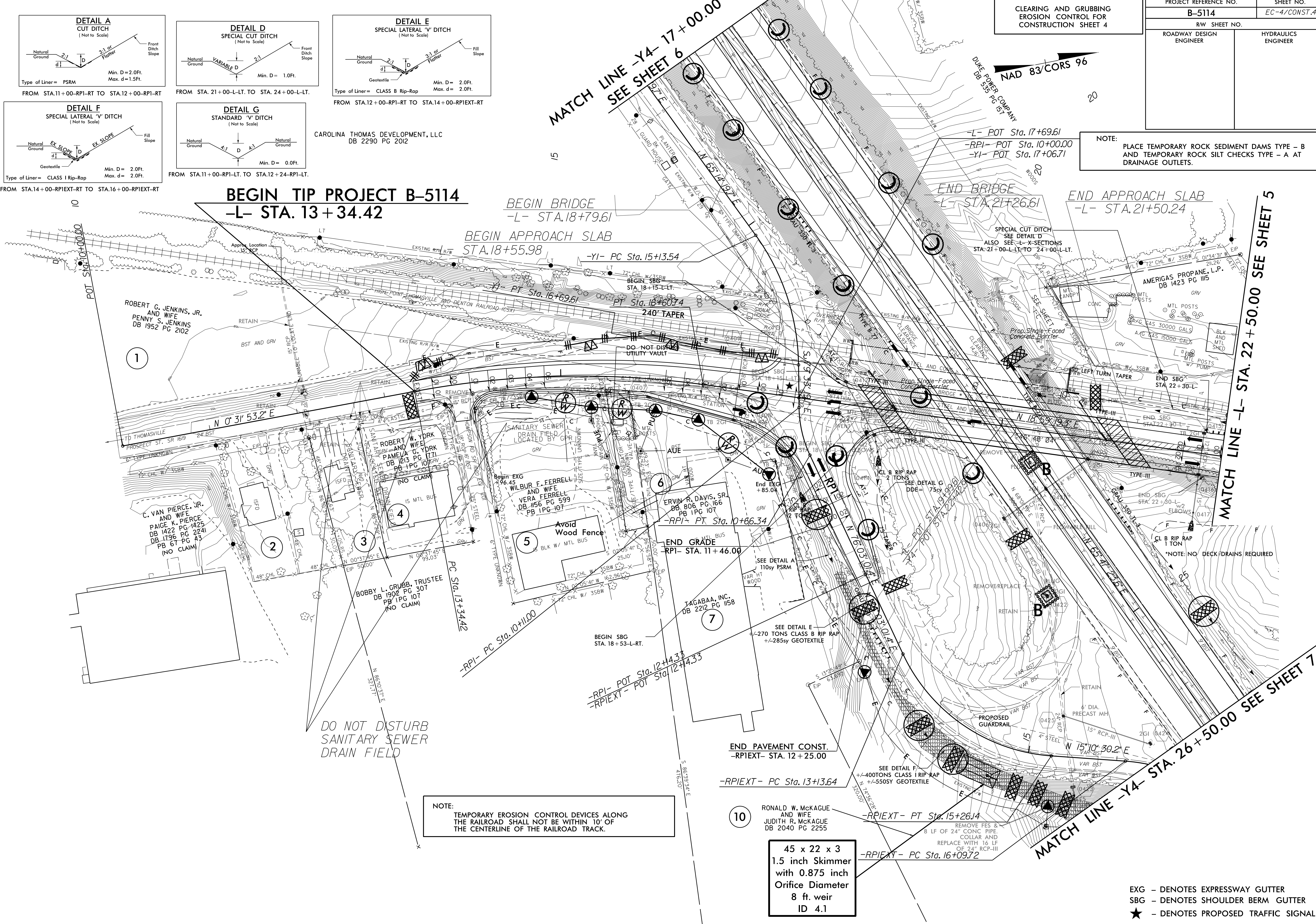
BEGIN TIP PROJECT B-5114
-L- STA. 13+34.42

BEGIN BRIDGE
-L- STA.18+79.61

BEGIN APPROACH SLAB
STA.18+55.98

END BRIDGE
-L- STA.21+26.61

END APPROACH SLAB
-L- STA.21+50.24

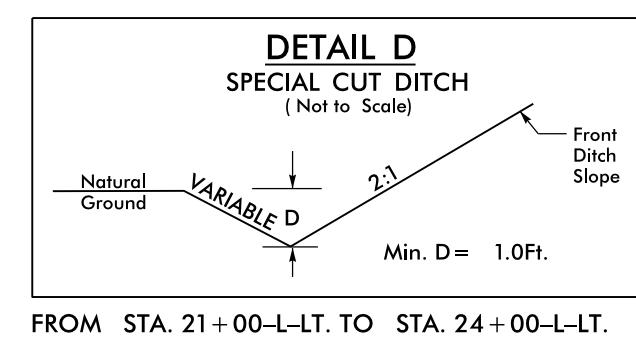
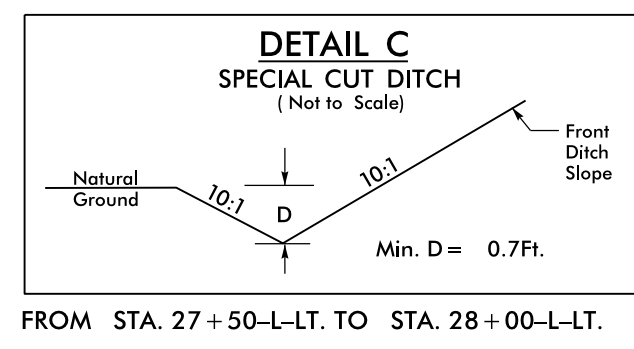
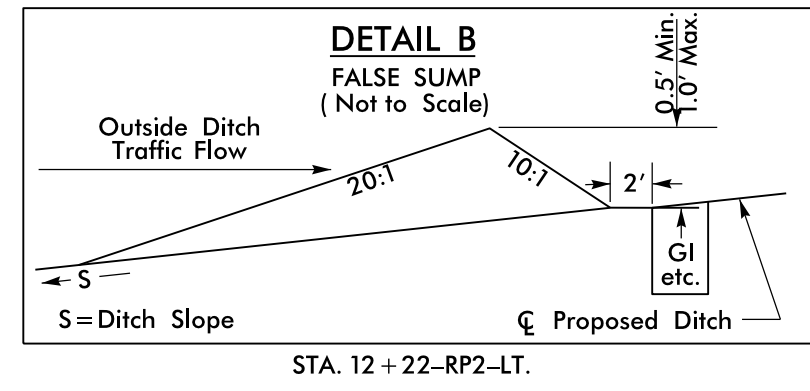


NOTE:
TEMPORARY EROSION CONTROL DEVICES ALONG THE RAILROAD SHALL NOT BE WITHIN 10' OF THE CENTERLINE OF THE RAILROAD TRACK.

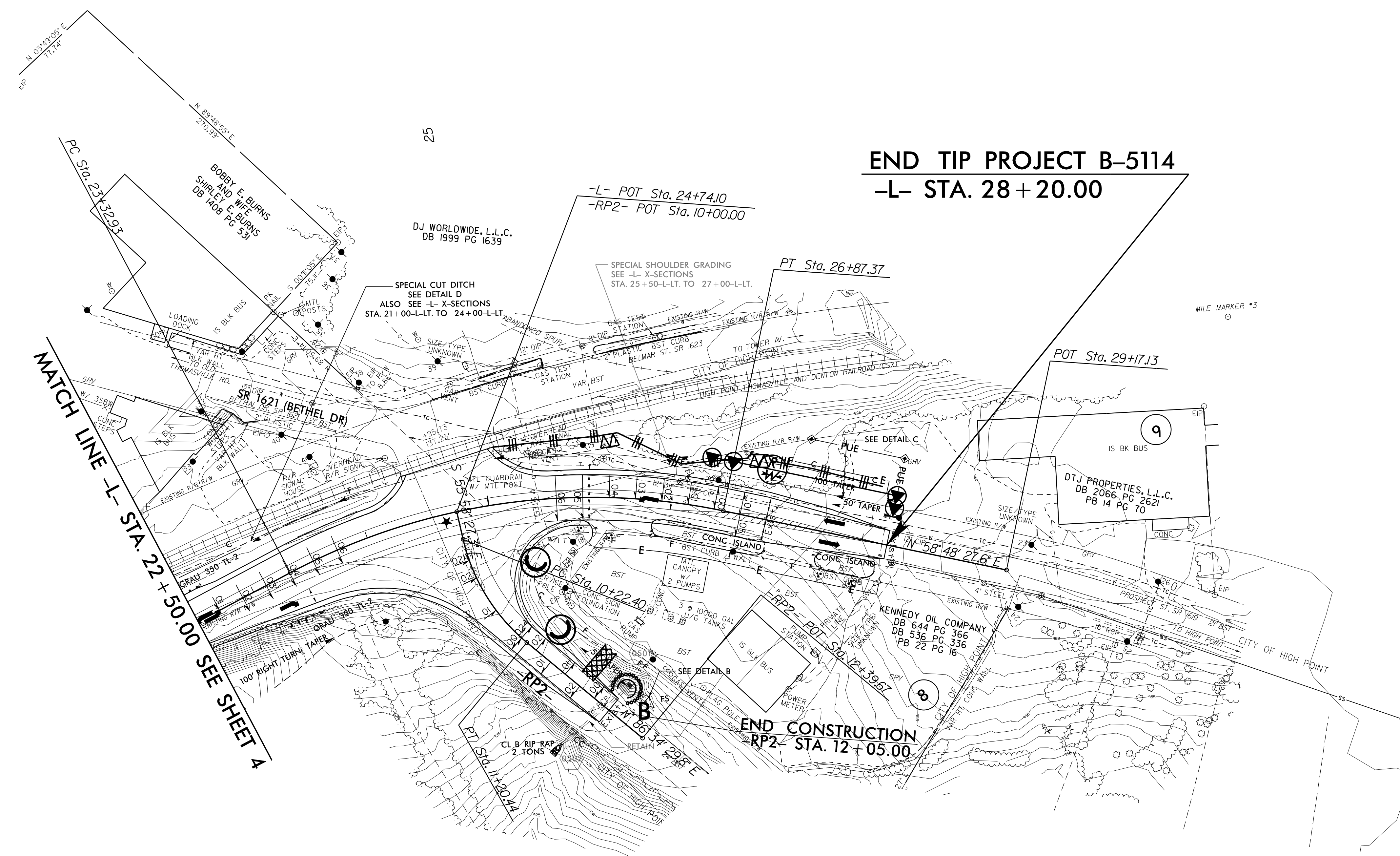
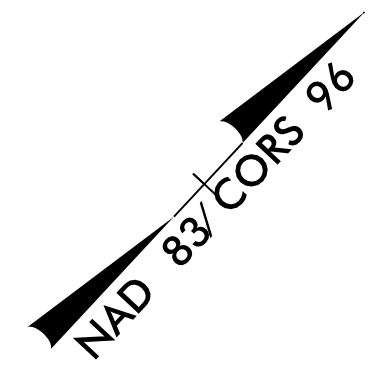
45 x 22 x 3
1.5 inch Skimmer
with 0.875 inch
Orifice Diameter
8 ft. weir
ID 4.1

EXG - DENOTES EXPRESSWAY GUTTER
SBG - DENOTES SHOULDER BERM GUTTER
★ - DENOTES PROPOSED TRAFFIC SIGNAL

PROJECT REFERENCE NO.	SHEET NO.
B-5114	EC-5/CONST.5
RW SHEET NO.	
ROADWAY DESIGN ENGINEER	HYDRAULICS ENGINEER



NOTE:
TEMPORARY EROSION CONTROL DEVICES ALONG THE RAILROAD SHALL NOT BE WITHIN 10' OF THE CENTERLINE OF THE RAILROAD TRACK.



★ - DENOTES PROPOSED TRAFFIC SIGNAL

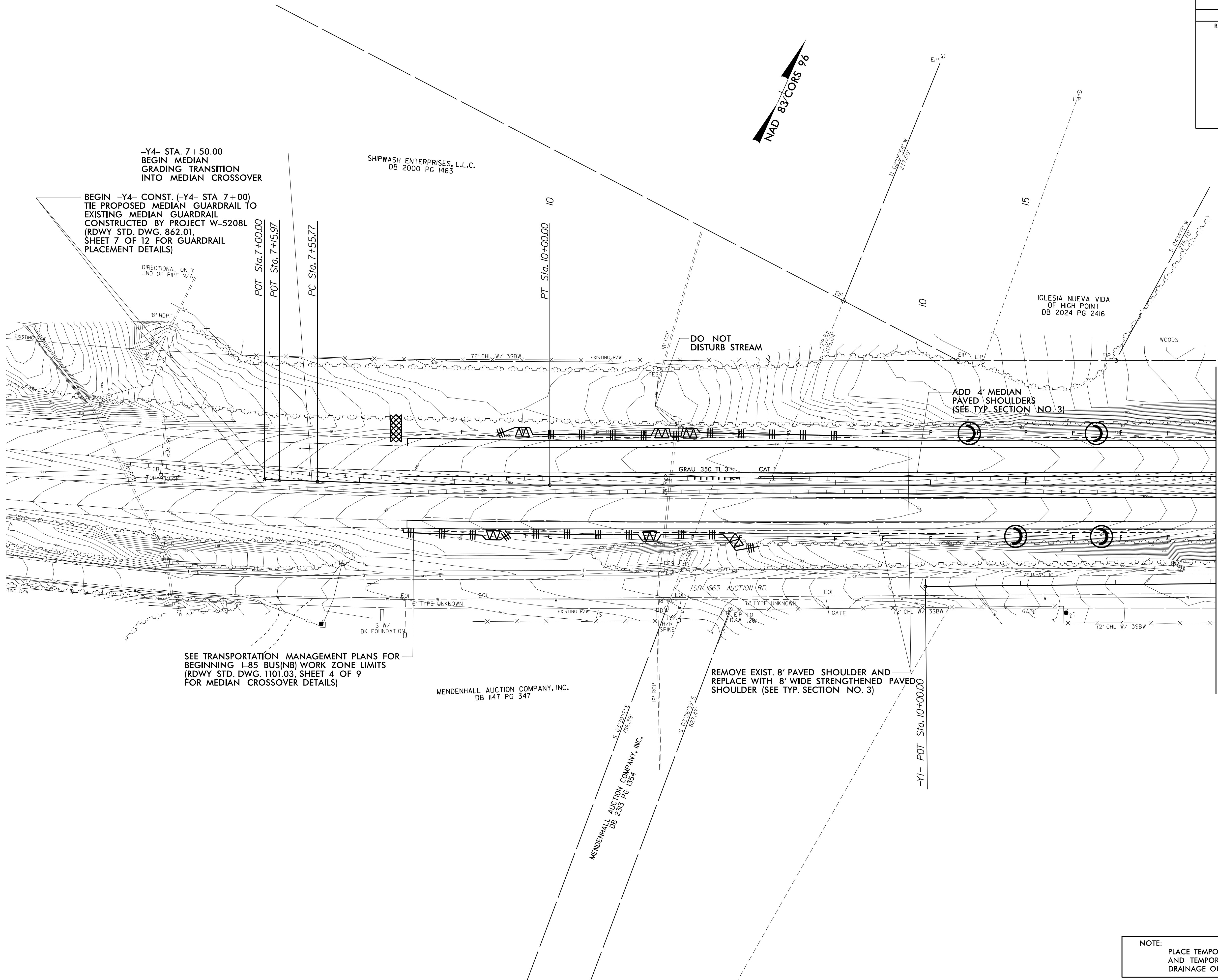
CLEARING AND GRUBBING
EROSION CONTROL FOR
CONSTRUCTION SHEET 5

NOTE:
PLACE TEMPORARY ROCK SEDIMENT DAMS TYPE - B
AND TEMPORARY ROCK SILT CHECKS TYPE - A AT
DRAINAGE OUTLETS.

8/17/99
P:\PR-2015\15156\15156.dwg
R:\E\conmen\ag\RE\15156\15156.dwg
R:\E\conmen\ag\RE\15156\15156.dwg
R:\E\conmen\ag\RE\15156\15156.dwg

PROJECT REFERENCE NO.	SHEET NO.
B-5114	EC-6/CONST.6
RW SHEET NO.	
ROADWAY DESIGN ENGINEER	HYDRAULICS ENGINEER

8/17/99



-Y4- STA. 7+50.00
 BEGIN MEDIAN
 GRADING TRANSITION
 INTO MEDIAN CROSSOVER

BEGIN -Y4- CONST. (-Y4- STA 7+00)
 TIE PROPOSED MEDIAN GUARDRAIL TO
 EXISTING MEDIAN GUARDRAIL
 CONSTRUCTED BY PROJECT W-5208L
 (RDWY STD. DWG. 862.01,
 SHEET 7 OF 12 FOR GUARDRAIL
 PLACEMENT DETAILS)

POT Sta. 7+00.00
 POT Sta. 7+15.97
 PC Sta. 7+55.77
 PT Sta. 10+00.00

DO NOT
 DISTURB
 STREAM

ADD 4' MEDIAN
 PAVED SHOULDERS
 (SEE TYP. SECTION NO. 3)

SEE TRANSPORTATION MANAGEMENT PLANS FOR
 BEGINNING I-85 BUS(NB) WORK ZONE LIMITS
 (RDWY STD. DWG. 1101.03, SHEET 4 OF 9
 FOR MEDIAN CROSSOVER DETAILS)

MENDENHALL AUCTION COMPANY, INC.
 DB 1147 PG 347

REMOVE EXIST. 8' PAVED SHOULDER AND
 REPLACE WITH 8' WIDE STRENGTHENED PAVED
 SHOULDER (SEE TYP. SECTION NO. 3)

MATCH LINE -Y4- 17+00.00 SEE SHEET 4

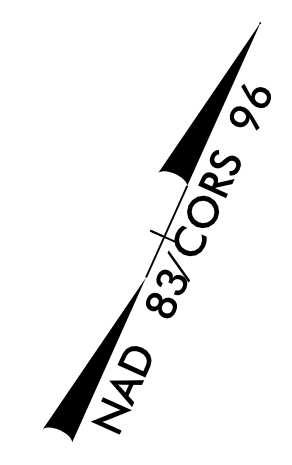
CLEARING AND GRUBBING
 EROSION CONTROL FOR
 CONSTRUCTION SHEET 6

NOTE:
 PLACE TEMPORARY ROCK SEDIMENT DAMS TYPE - B
 AND TEMPORARY ROCK SILT CHECKS TYPE - A AT
 DRAINAGE OUTLETS.

23-FEB-2015 13:53
 R:\Documents\B-5114-EC.pst\6.dgn
 REVISIONS

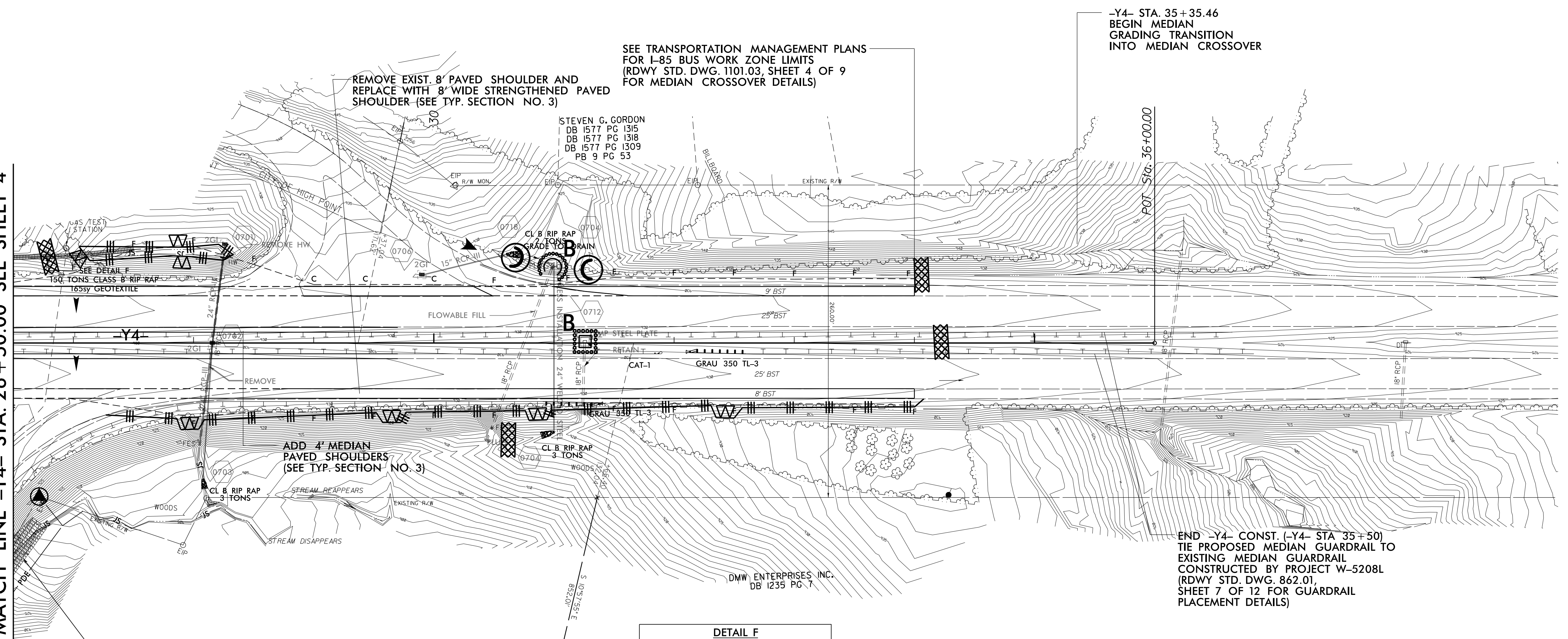
PROJECT REFERENCE NO.	SHEET NO.
B-5114	EC-7/CONST.7
RW SHEET NO.	
ROADWAY DESIGN ENGINEER	HYDRAULICS ENGINEER

8/17/99



35

MATCH LINE -Y4- STA. 26 + 50.00 SEE SHEET 4



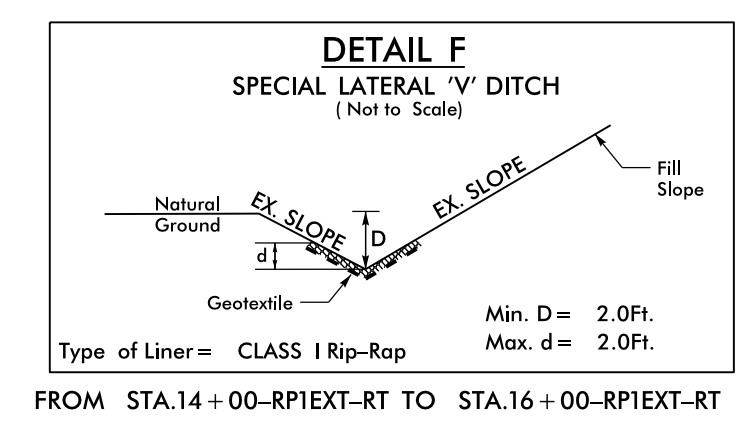
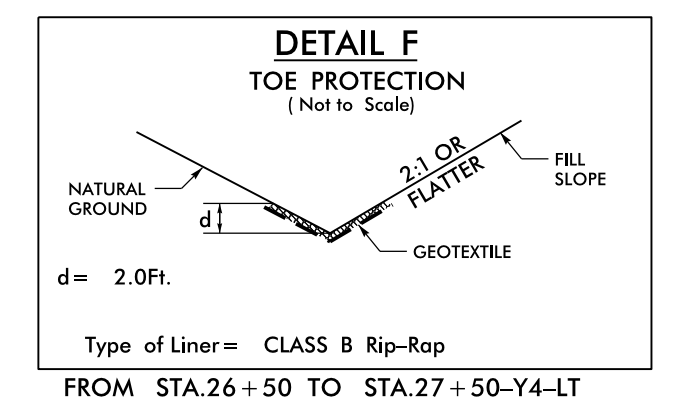
-Y4- STA. 35 + 35.46
BEGIN MEDIAN
GRADING TRANSITION
INTO MEDIAN CROSSOVER

END -Y4- CONST. (-Y4- STA 35 + 50)
TIE PROPOSED MEDIAN GUARDRAIL TO
EXISTING MEDIAN GUARDRAIL
CONSTRUCTED BY PROJECT W-5208L
(RDWY STD. DWG. 862.01,
SHEET 7 OF 12 FOR GUARDRAIL
PLACEMENT DETAILS)

SEE DETAIL F
+/-270 TONS CLASS I RIP RAP
+/-550SY GEOTEXTILE

10

RONALD W. MCKAGUE
AND WIFE
JUDITH R. MCKAGUE
DB 2040 PG 2255



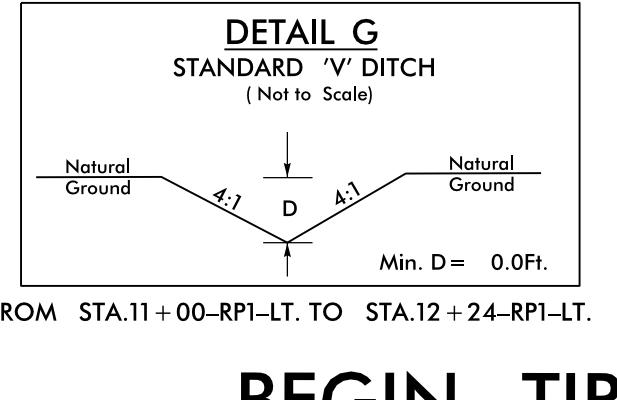
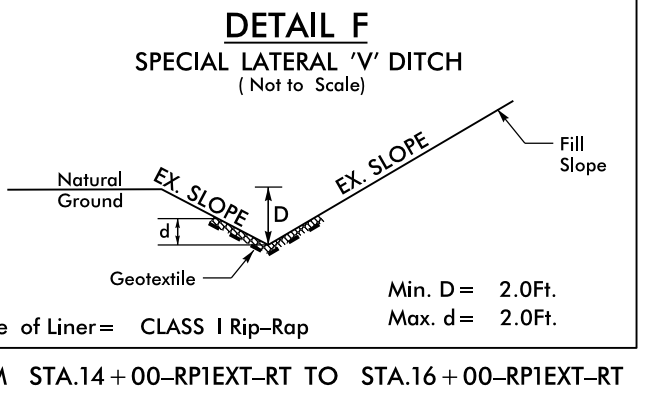
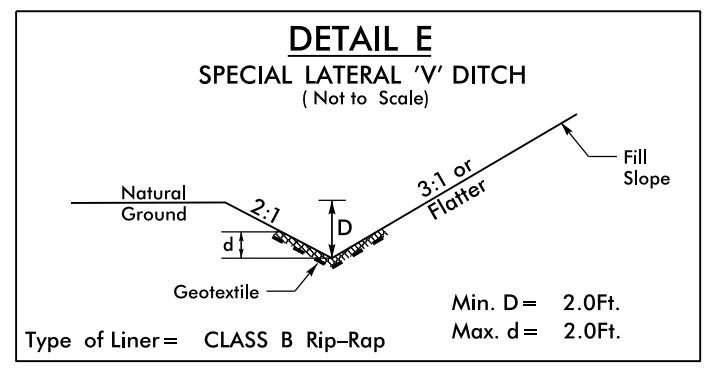
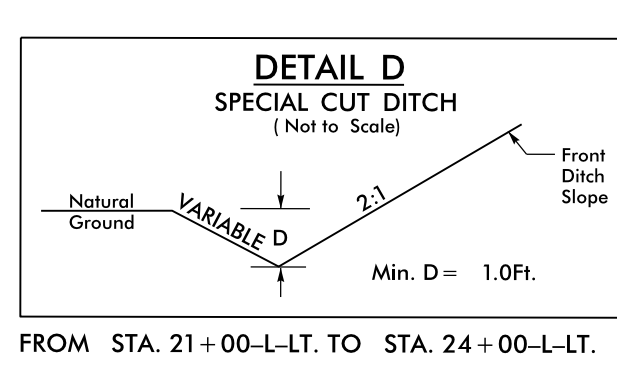
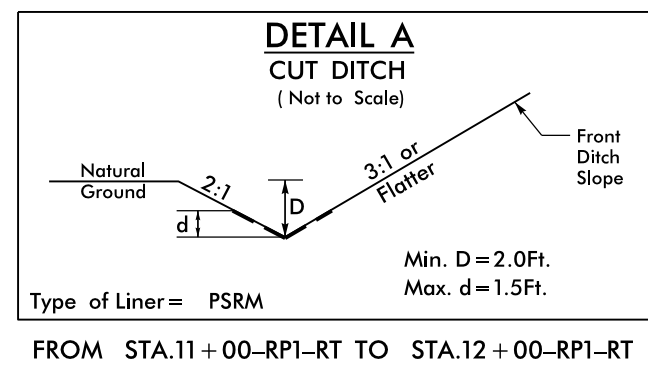
CLEARING AND GRUBBING
EROSION CONTROL FOR
CONSTRUCTION SHEET 7

NOTE:
PLACE TEMPORARY ROCK SEDIMENT DAMS TYPE - B
AND TEMPORARY ROCK SILT CHECKS TYPE - A AT
DRAINAGE OUTLETS.

INSTALL PIPE(S) IN JURISDICTIONAL AREAS WITHOUT IMPACTING STREAM UNTIL
AREA STABILIZED AND ACCORDING TO NCDOT BEST MANAGEMENT
PRACTICES FOR CONSTRUCTION AND MAINTENANCE ACTIVITIES MANUAL.

23-FEB-2015 14:43
R:\E\Projects\B-5114-EC.psh7.dgn
R:\E\Projects\B-5114-EC.psh7.dgn
R:\E\Projects\B-5114-EC.psh7.dgn

PROJECT REFERENCE NO.	SHEET NO.
B-5114	EC-8/CONST.4
RW SHEET NO.	
ROADWAY DESIGN ENGINEER	HYDRAULICS ENGINEER



CAROLINA THOMAS DEVELOPMENT, LLC
DB 2290 PG 2012

BEGIN TIP PROJECT B-5114
-L- STA. 13+34.42

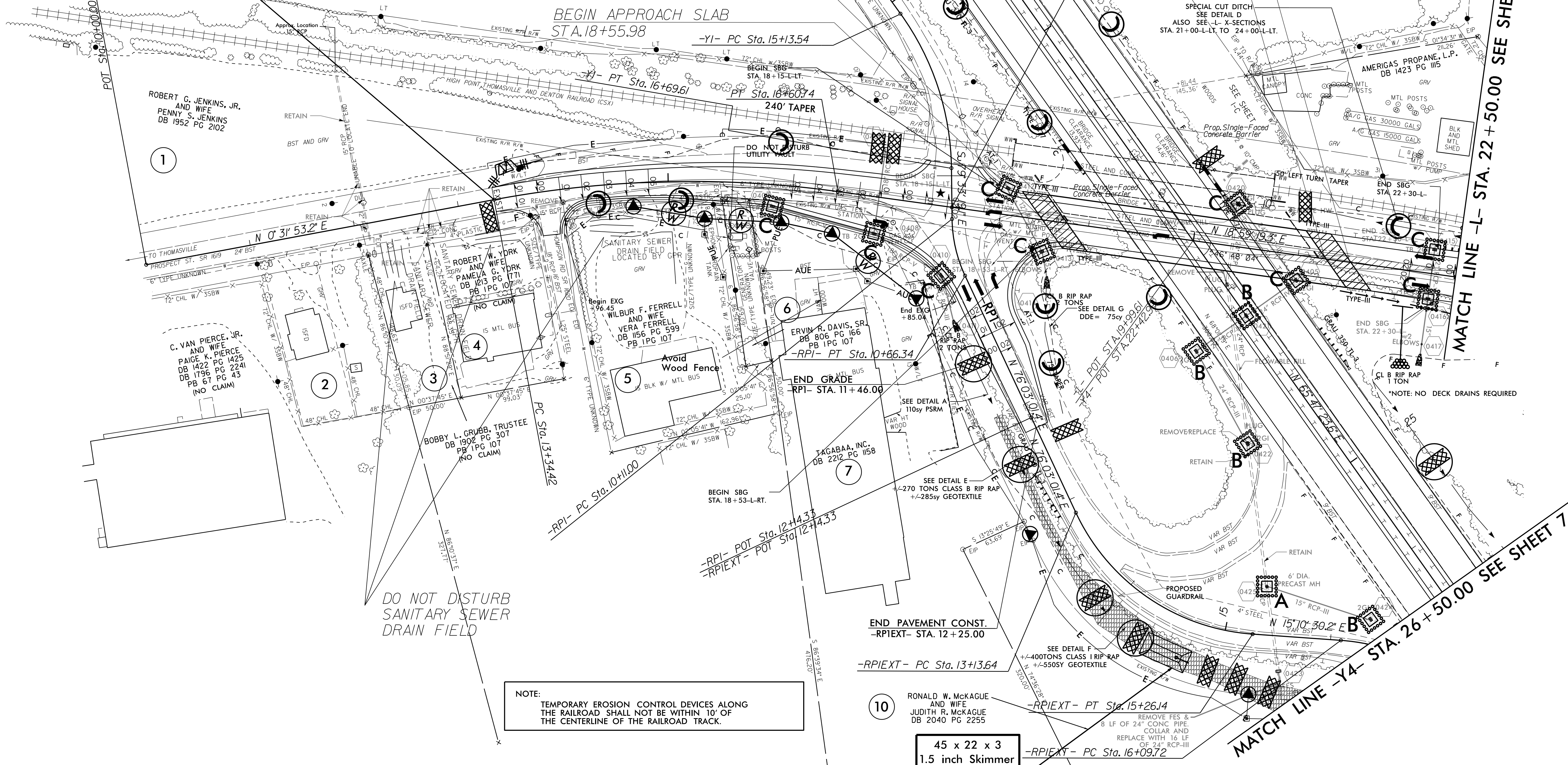
BEGIN BRIDGE
-L- STA. 18+79.61

BEGIN APPROACH SLAB
STA. 18+55.98

-L- POT Sta. 17+69.61
-RPI- POT Sta. 10+00.00
-YI- POT Sta. 17+06.71

END BRIDGE
-L- STA. 21+26.61

END APPROACH SLAB
-L- STA. 21+50.24



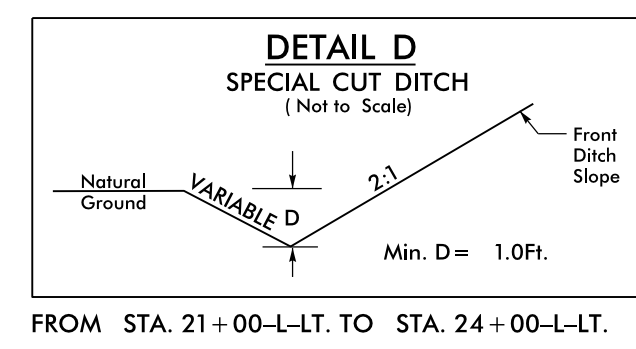
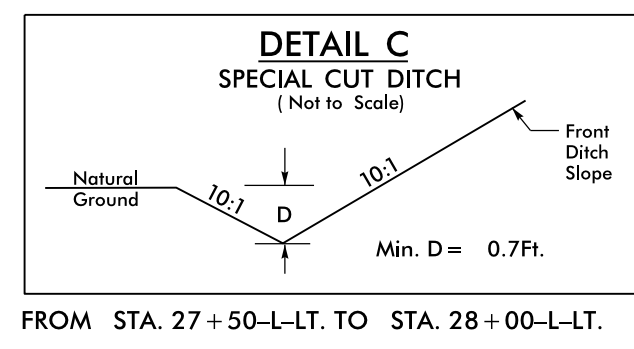
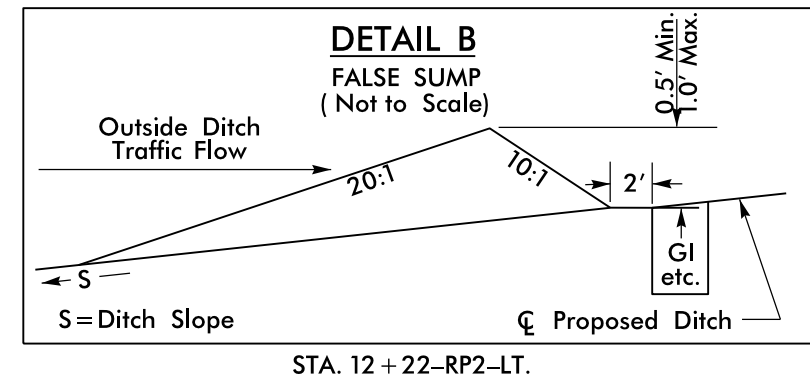
NOTE:
TEMPORARY EROSION CONTROL DEVICES ALONG THE RAILROAD SHALL NOT BE WITHIN 10' OF THE CENTERLINE OF THE RAILROAD TRACK.

45 x 22 x 3
1.5 inch Skimmer
with 0.875 inch
Orifice Diameter
8 ft. weir
ID 4.1

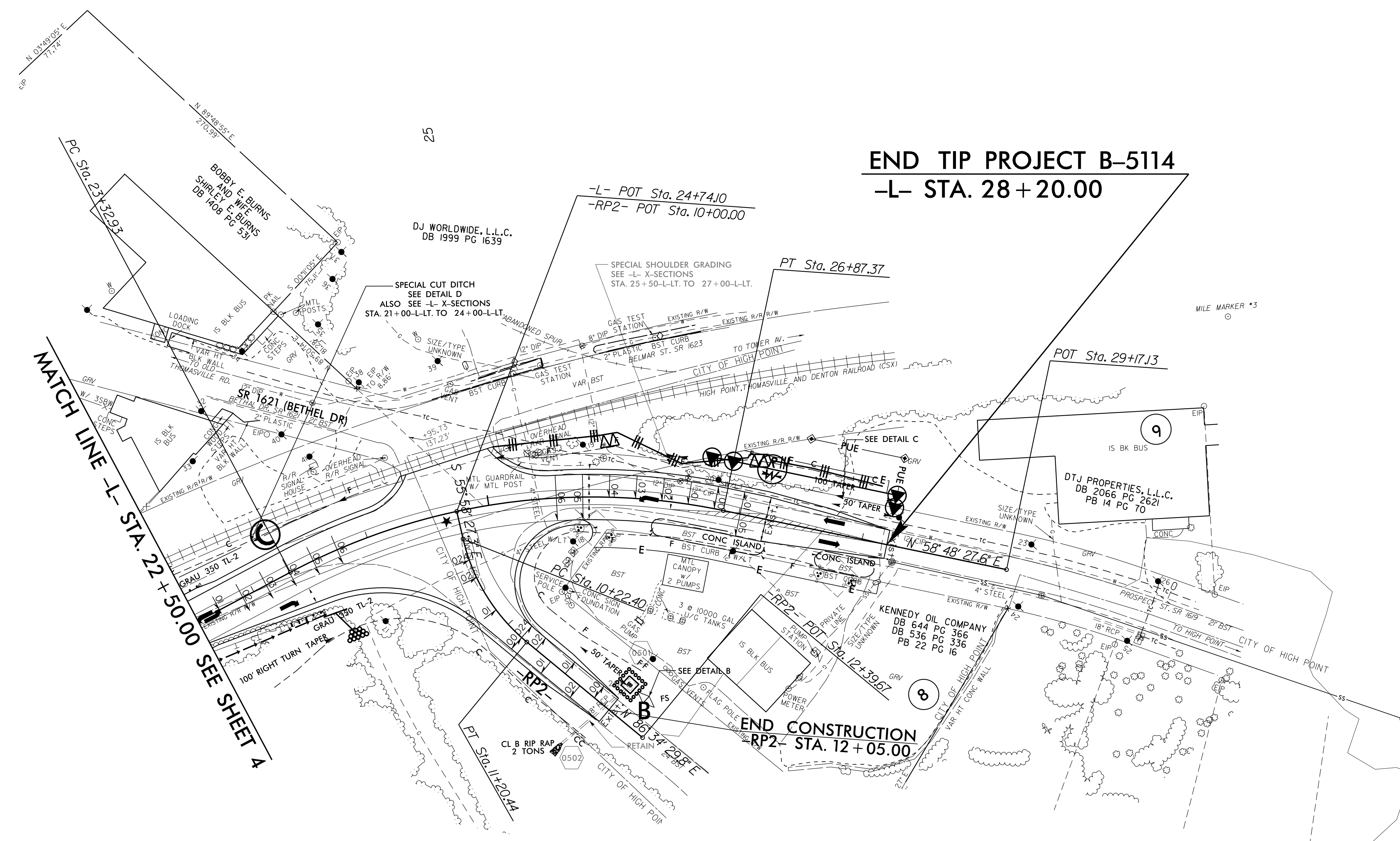
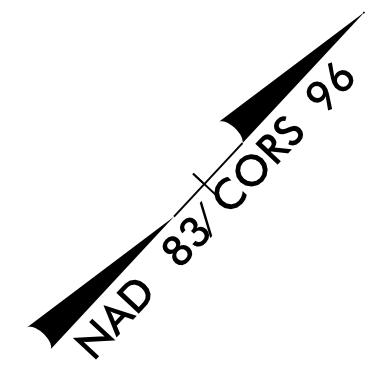
EXG - DENOTES EXPRESSWAY GUTTER
SBG - DENOTES SHOULDER BERM GUTTER
★ - DENOTES PROPOSED TRAFFIC SIGNAL

8/17/99
4-APR-2015 07:31
R:\Projects\B-5114-EC-psm4.dgn
REVISIONS
1
2
3
4
5
6
7
8
9
10

PROJECT REFERENCE NO.	SHEET NO.
B-5114	EC-9/CONST.5
RW SHEET NO.	
ROADWAY DESIGN ENGINEER	HYDRAULICS ENGINEER



NOTE:
TEMPORARY EROSION CONTROL DEVICES ALONG THE RAILROAD SHALL NOT BE WITHIN 10' OF THE CENTERLINE OF THE RAILROAD TRACK.

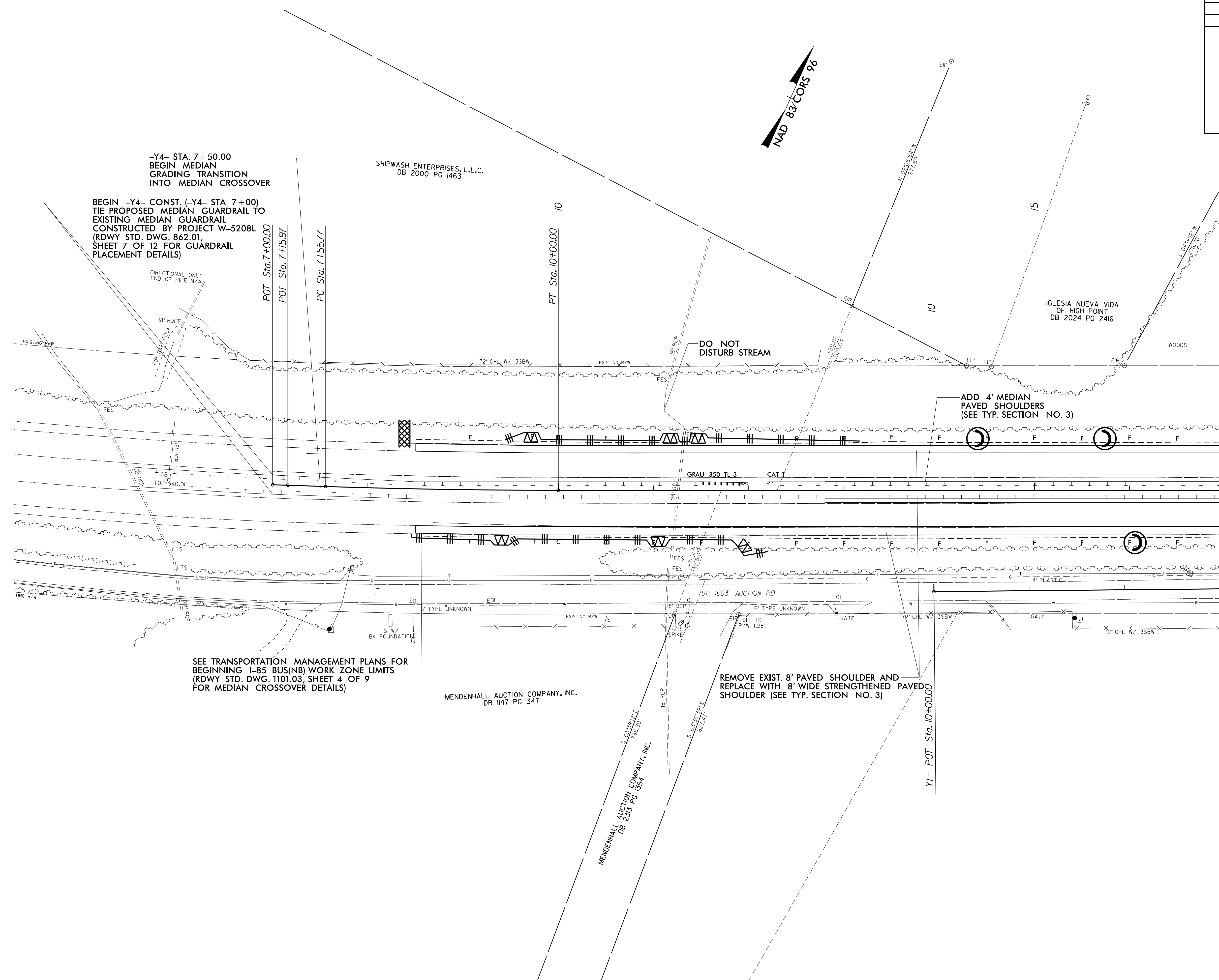


★ - DENOTES PROPOSED TRAFFIC SIGNAL

8/17/99
 P:\APR-2015 15:55
 R:\E:\conform\B-5114-EC-psht5.dgn
 REVISIONS: 1

PROJECT REFERENCE NO.	SHEET NO.
B-5114	EC-10/CONST.6
RW SHEET NO.	
ROADWAY DESIGN ENGINEER	HYDRAULICS ENGINEER

8/17/99



-Y4- STA. 7+50.00
 BEGIN MEDIAN
 GRADING TRANSITION
 INTO MEDIAN CROSSOVER

BEGIN -Y4- CONST. (-Y4- STA 7+00)
 TIE PROPOSED MEDIAN GUARDRAIL TO
 EXISTING MEDIAN GUARDRAIL
 CONSTRUCTED BY PROJECT W-5208L
 (RDWY STD. DWG. 862.01,
 SHEET 7 OF 12 FOR GUARDRAIL
 PLACEMENT DETAILS)

SEE TRANSPORTATION MANAGEMENT PLANS FOR
 BEGINNING I-85 BUS(NB) WORK ZONE LIMITS
 (RDWY STD. DWG. 1101.03, SHEET 4 OF 9
 FOR MEDIAN CROSSOVER DETAILS)

MENDENHALL AUCTION COMPANY, INC.
 DB 1147 PG 347

MENDENHALL AUCTION COMPANY, INC.
 DB 2313 PG 1354

REMOVE EXIST. 8' PAVED SHOULDER AND
 REPLACE WITH 8' WIDE STRENGTHENED PAVED
 SHOULDER (SEE TYP. SECTION NO. 3)

ADD 4' MEDIAN
 PAVED SHOULDERS
 (SEE TYP. SECTION NO. 3)

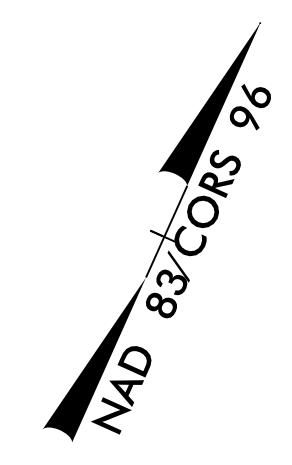
DO NOT
 DISTURB STREAM

MATCH LINE -Y4- 17+00.00 SEE SHEET 4

23-FEB-2015 13:57
 R:\EC-10\Const\B-5114-EC.pst6cdgn
 REVISION 1

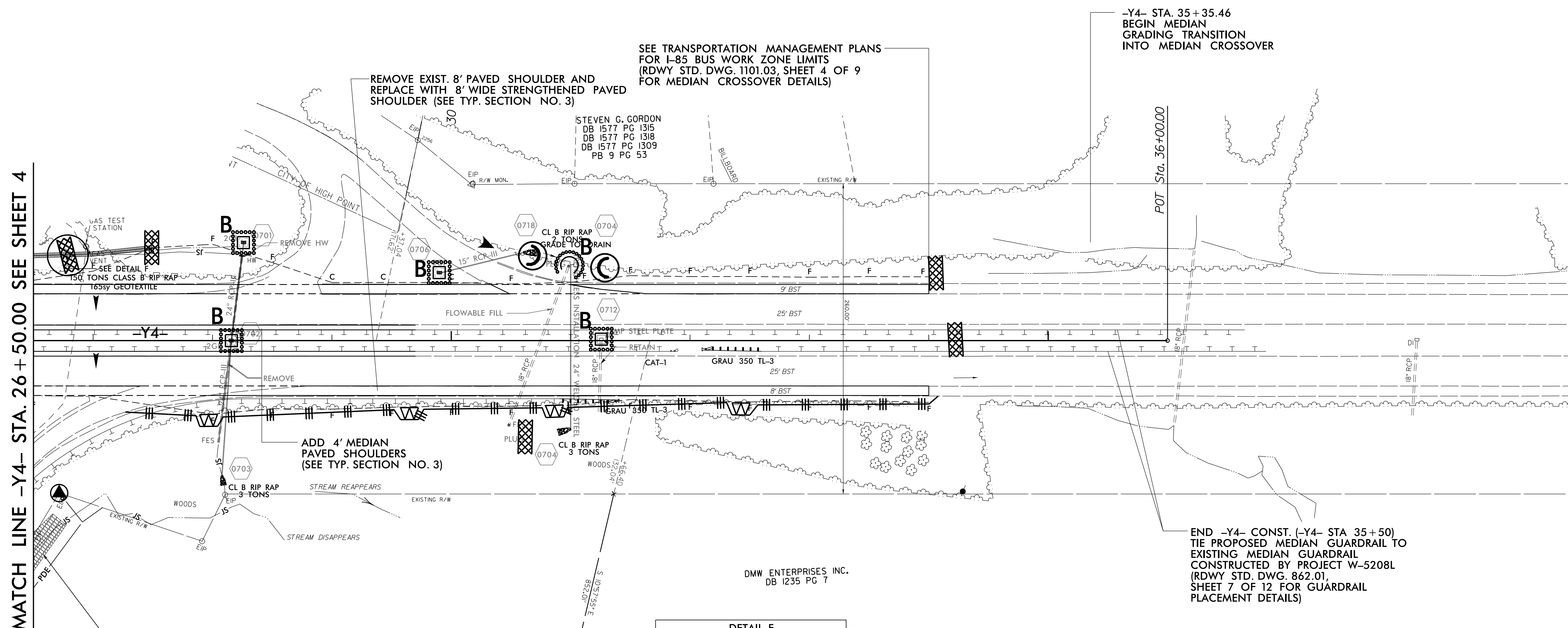
PROJECT REFERENCE NO.	SHEET NO.
B-5114	EC-II/CONST.7
RW SHEET NO.	
ROADWAY DESIGN ENGINEER	HYDRAULICS ENGINEER

8/17/99



35

MATCH LINE -Y4- STA. 26 + 50.00 SEE SHEET 4



-Y4- STA. 35 + 35.46
BEGIN MEDIAN
GRADING TRANSITION
INTO MEDIAN CROSSOVER

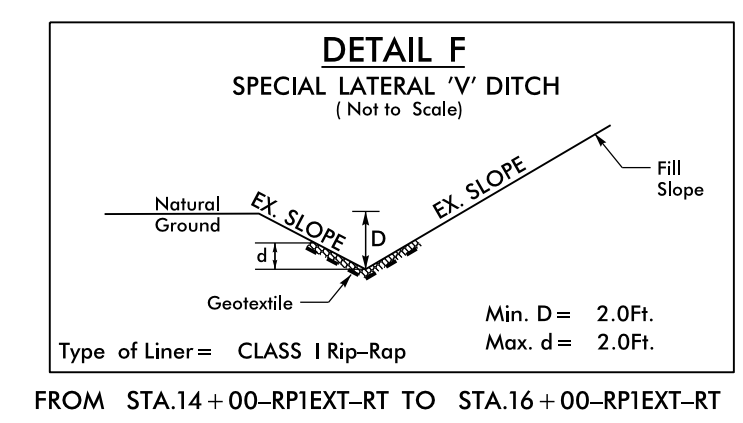
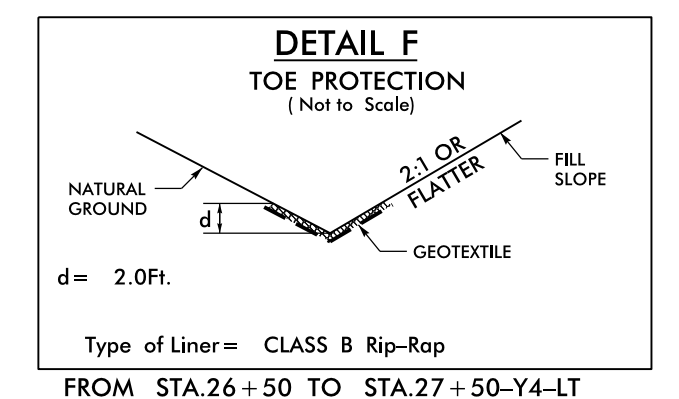
SEE TRANSPORTATION MANAGEMENT PLANS
FOR I-85 BUS WORK ZONE LIMITS
(RDWY STD. DWG. 1101.03, SHEET 4 OF 9
FOR MEDIAN CROSSOVER DETAILS)

ADD 4' MEDIAN
PAVED SHOULDERS
(SEE TYP. SECTION NO. 3)

END -Y4- CONST. (-Y4- STA 35 + 50)
TIE PROPOSED MEDIAN GUARDRAIL TO
EXISTING MEDIAN GUARDRAIL
CONSTRUCTED BY PROJECT W-5208L
(RDWY STD. DWG. 862.01,
SHEET 7 OF 12 FOR GUARDRAIL
PLACEMENT DETAILS)

10

RONALD W. MCKAGUE
AND WIFE
JUDITH R. MCKAGUE
DB 2040 PG 2255



23-FEB-2015 14:47
D:\as197\B-5114-EC.psh7.dgn
REVISIONS
1