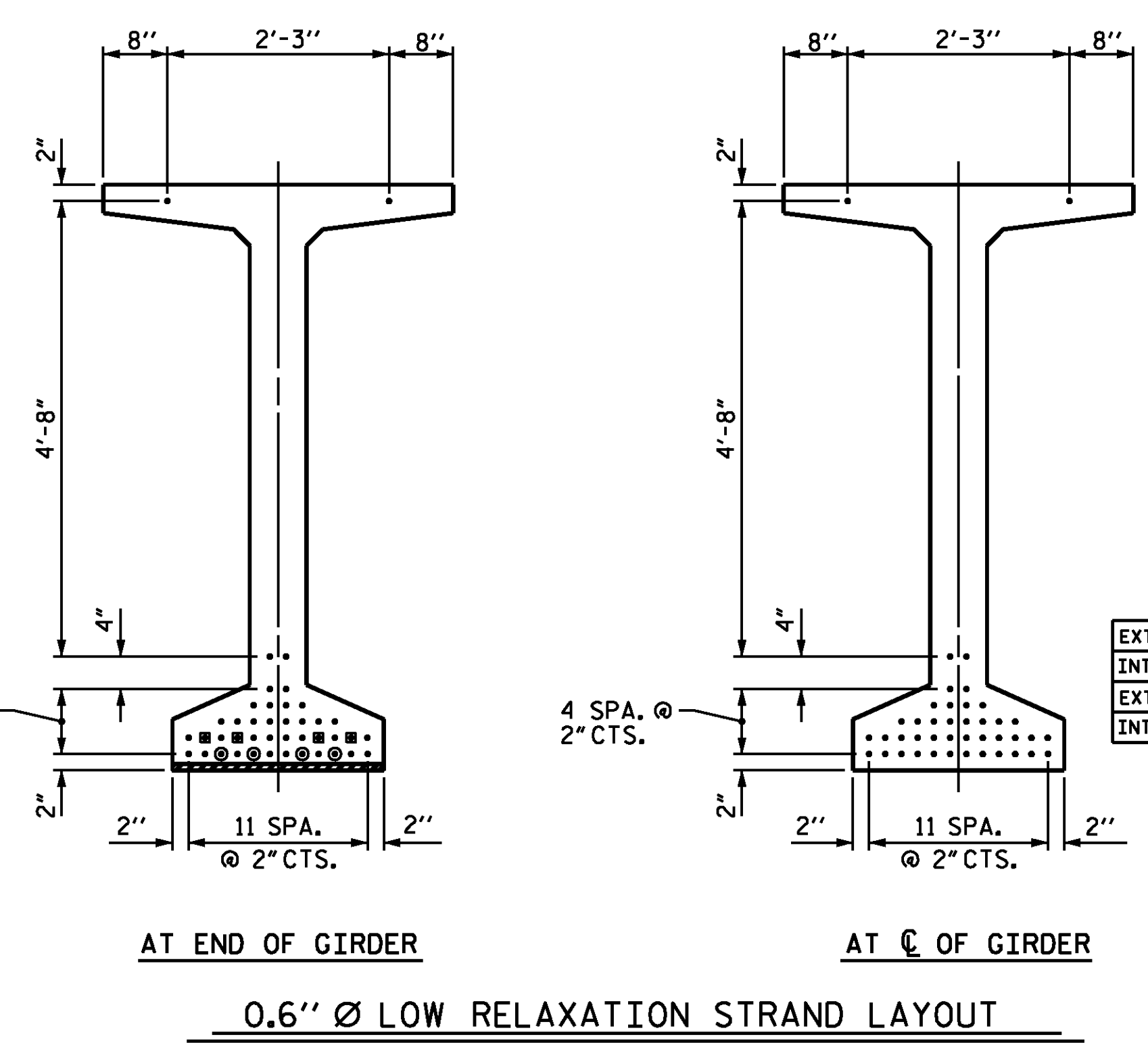


**DEBONDING LEGEND**

- FULLY BONDED STRANDS
- ◻ STRANDS DEBONDED FOR 10'-0" FROM END OF GIRDER
- STRANDS DEBONDED FOR 24'-0" FROM END OF GIRDER

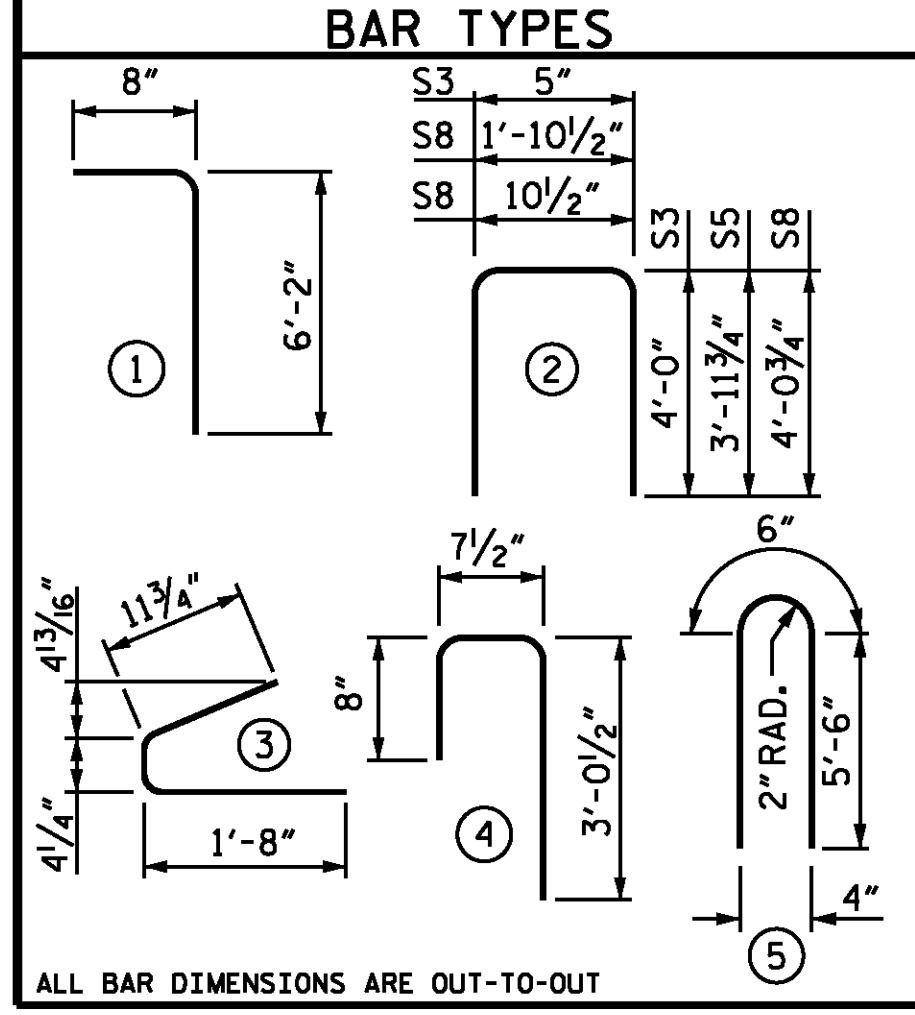
\* FOR S7 BARS, SEE DETAIL "C" OF PRESTRESSED CONCRETE GIRDER CONTINUOUS FOR LIVE LOAD DETAILS SHEET 4 OF 4



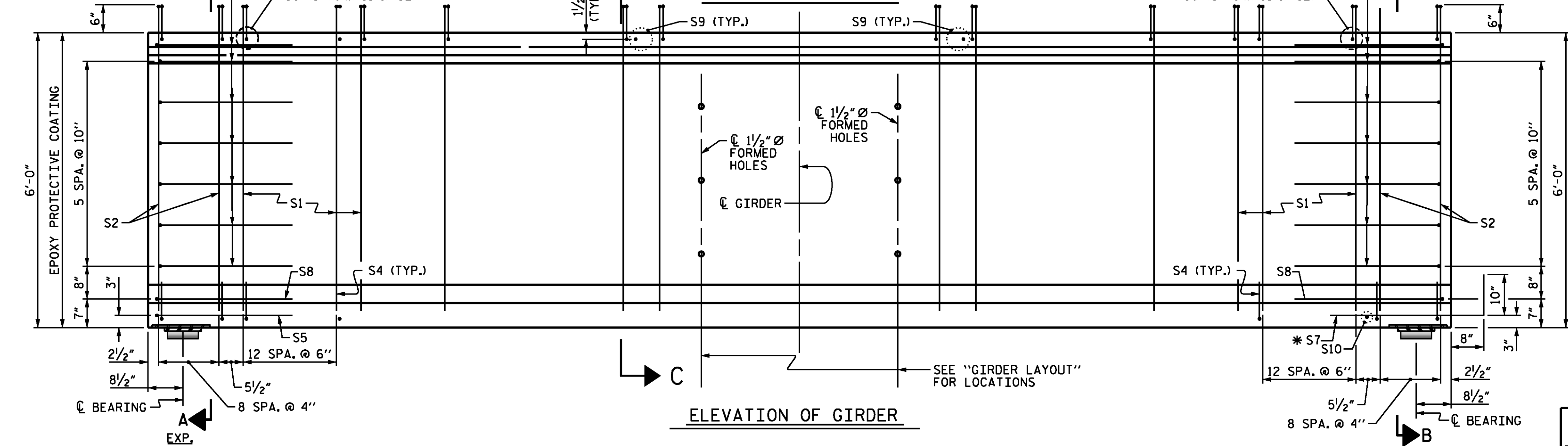
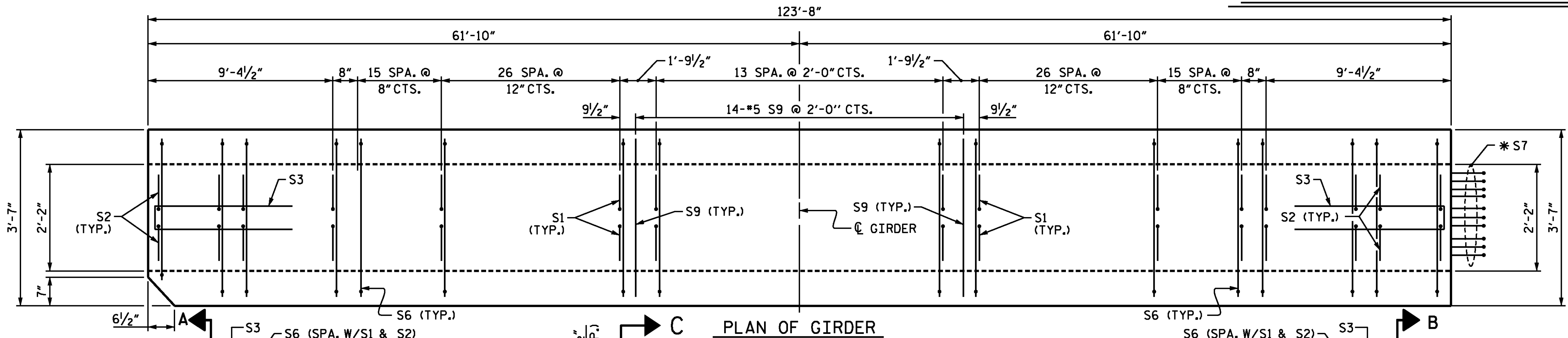
0.6" Ø L. R. GRADE 270 STRANDS		
AREA (SQUARE INCHES)	ULTIMATE STRENGTH (LBS. PER STRAND)	APPLIED PRESTRESS (LBS. PER STRAND)
0.217	58,600	43,950

REINFORCING STEEL FOR ONE GDR						
BAR	NUMBER	SIZE	TYPE	LENGTH	WEIGHT	
S1	248	#4	1	6'-10"	1,132	
S2	36	#5	1	6'-10"	257	
S3	14	#4	2	8'-5"	79	
S4	88	#4	3	3'-0"	176	
S5	1	#5	2	9'-10"	10	
S6	284	#5	4	4'-4"	1,284	
*S7	10	#5	STR	3'-8"	38	
S8	2	#5	2	9'-0"	19	
S9	14	#5	STR	3'-3"	47	
S10	1	#3	STR	1'-10"	1	
EXTERIOR GDR.	S11	4	#5	5	11'-6"	48
INTERIOR GDR.	S11	8	#5	5	11'-6"	96
EXTERIOR GDR.	S12	8	#4	STR	8'-0"	43
INTERIOR GDR.	S13	8	#5	STR	47'-0"	392

\* NOTE: S7 BARS SHALL BE BENT BEFORE SHIPMENT. HEAT BENDING SHALL NOT BE ALLOWED.



ALL BAR DIMENSIONS ARE OUT-TO-OUT



NOTE: FOR SECTION "C-C", SEE SHEET 4 OF 4.

QUANTITIES FOR ONE GIRDER			
	REINFORCING STEEL	8500 PSI CONCRETE	0.6" Ø L.R. STRANDS
	LB.	C.Y.	No.
GIRDERS 1 & 6	3,134	26.5	42
GIRDERS 2 - 5	3,531	26.5	42

GIRDERS REQUIRED		
NUMBER	LENGTH	TOTAL LENGTH
6	123'-8"	742'-0"

PROJECT NO. B-5114  
RANDOLPH COUNTY  
 STATION: 19+99.61 -L-

SHEET 2 OF 4

STATE OF NORTH CAROLINA  
 DEPARTMENT OF TRANSPORTATION  
 RALEIGH

STANDARD  
 72" PRESTRESSED CONCRETE  
 MODIFIED BULB TEE  
 CONTINUOUS FOR LIVE LOAD  
 SPAN B



**WSP**  
 Transportation & Infrastructure  
 15401 Weston Parkway Suite 100  
 Cary, NC 27513 - 919.678.0035  
 www.wspgroup.com  
 LICENSE NO. F-0881

ASSEMBLED BY : M.J. OSTRISHKO	DATE : 06/2014
CHECKED BY : N.A. PIERCE	DATE : 11/2014
DRAWN BY : EEM 2/6/97	REV. 5/1/06R TLA/GM
CHECKED BY : VAP 2/6/97	REV. 10/1/11 MAA/GM
	REV. 6/13 MAA/GM
DESIGN ENGINEER OF RECORD	DATE
N.A. PIERCE	11/2014

REVISIONS					
NO.	BY:	DATE:	NO.	BY:	DATE:
1			3		
2			4		

SHEET NO.	S01-11
TOTAL SHEETS	36