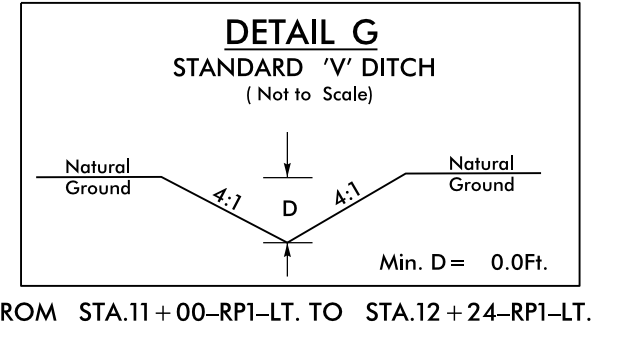
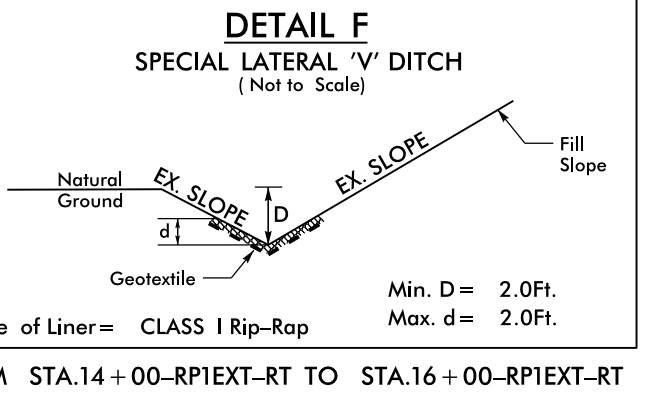
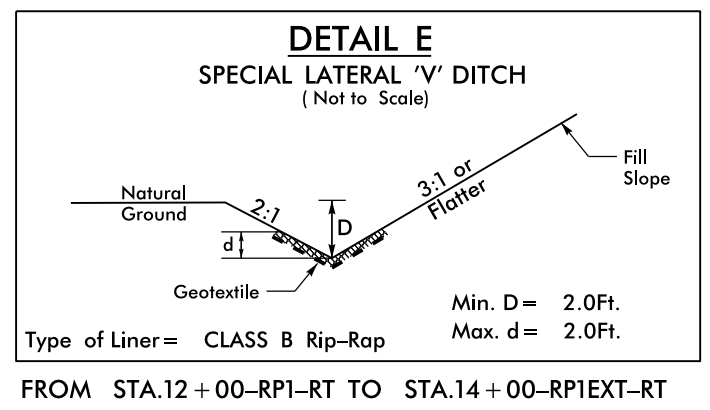
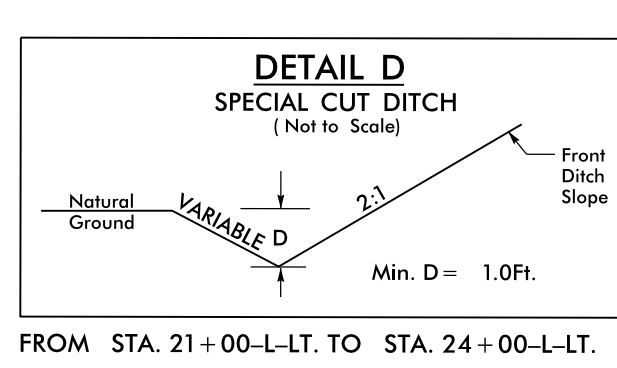
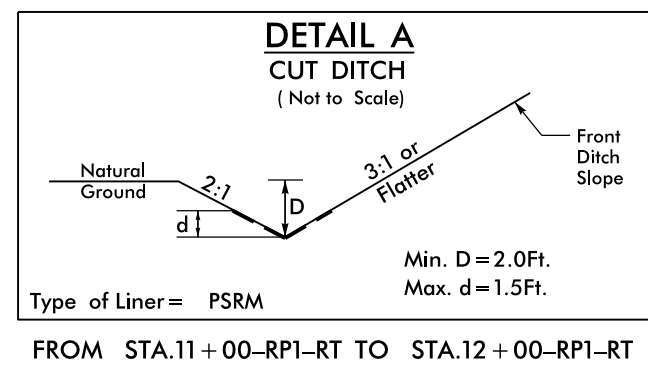


PROJECT REFERENCE NO.	SHEET NO.
B-5114	EC-8/CONST.4
RW SHEET NO.	
ROADWAY DESIGN ENGINEER	HYDRAULICS ENGINEER



CAROLINA THOMAS DEVELOPMENT, LLC
DB 2290 PG 2012

BEGIN TIP PROJECT B-5114
-L- STA. 13+34.42

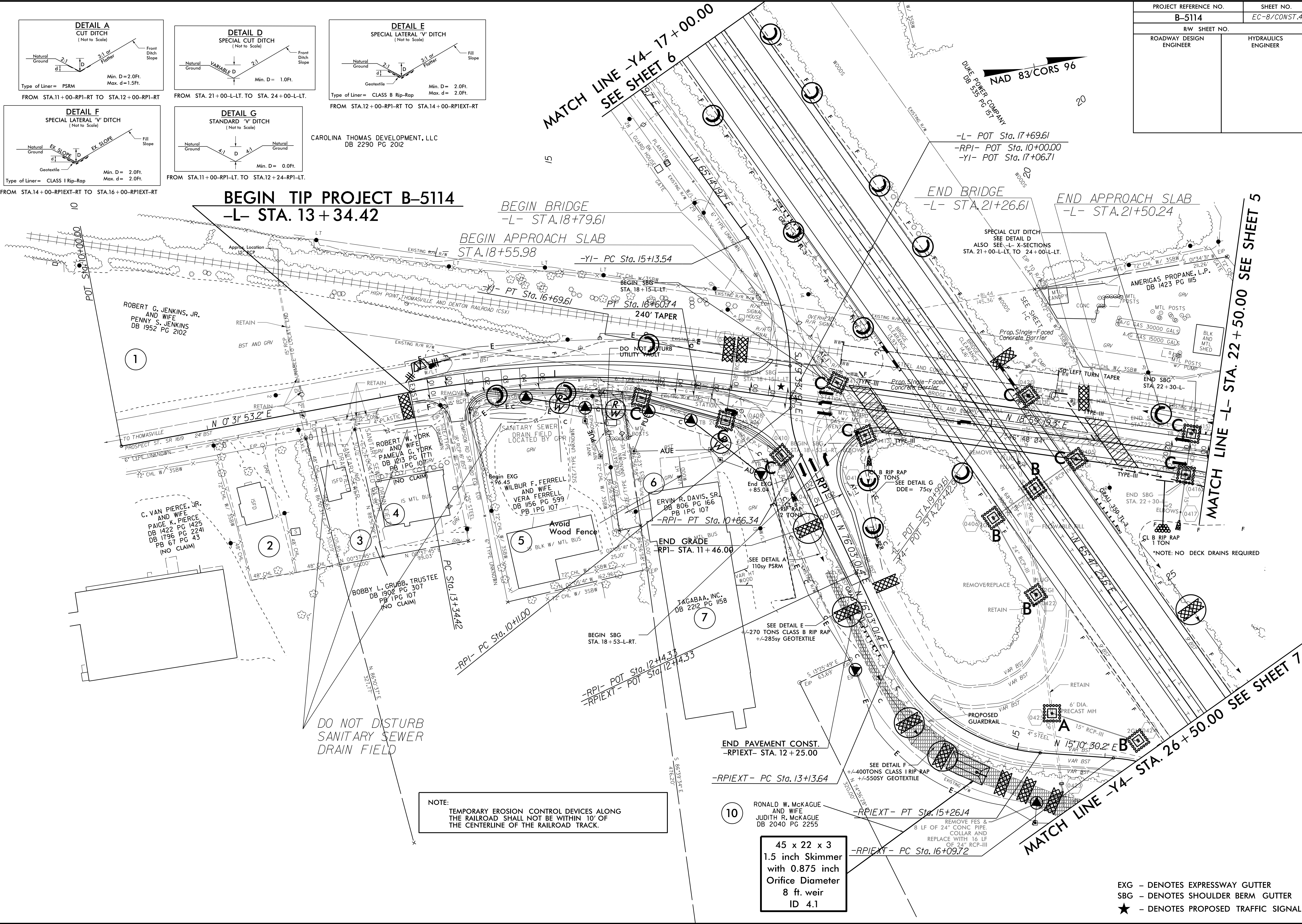
BEGIN BRIDGE
-L- STA.18+79.61

BEGIN APPROACH SLAB
STA.18+55.98

-L- POT Sta. 17+69.61
-RPI- POT Sta. 10+00.00
-YI- POT Sta. 17+06.71

END BRIDGE
-L- STA.21+26.61

END APPROACH SLAB
-L- STA.21+50.24



MATCH LINE -L- STA. 22 + 50.00 SEE SHEET 5

*NOTE: NO DECK DRAINS REQUIRED

NOTE:
TEMPORARY EROSION CONTROL DEVICES ALONG THE RAILROAD SHALL NOT BE WITHIN 10' OF THE CENTERLINE OF THE RAILROAD TRACK.

45 x 22 x 3
1.5 inch Skimmer
with 0.875 inch
Orifice Diameter
8 ft. weir
ID 4.1

EXG - DENOTES EXPRESSWAY GUTTER
SBG - DENOTES SHOULDER BERM GUTTER
★ - DENOTES PROPOSED TRAFFIC SIGNAL

8/17/99
4-APR-2015 07:31
R:\Projects\B-5114-EC-psr\4.dgn
REVISIONS
1
2
3
4
5
6
7
8
9
10