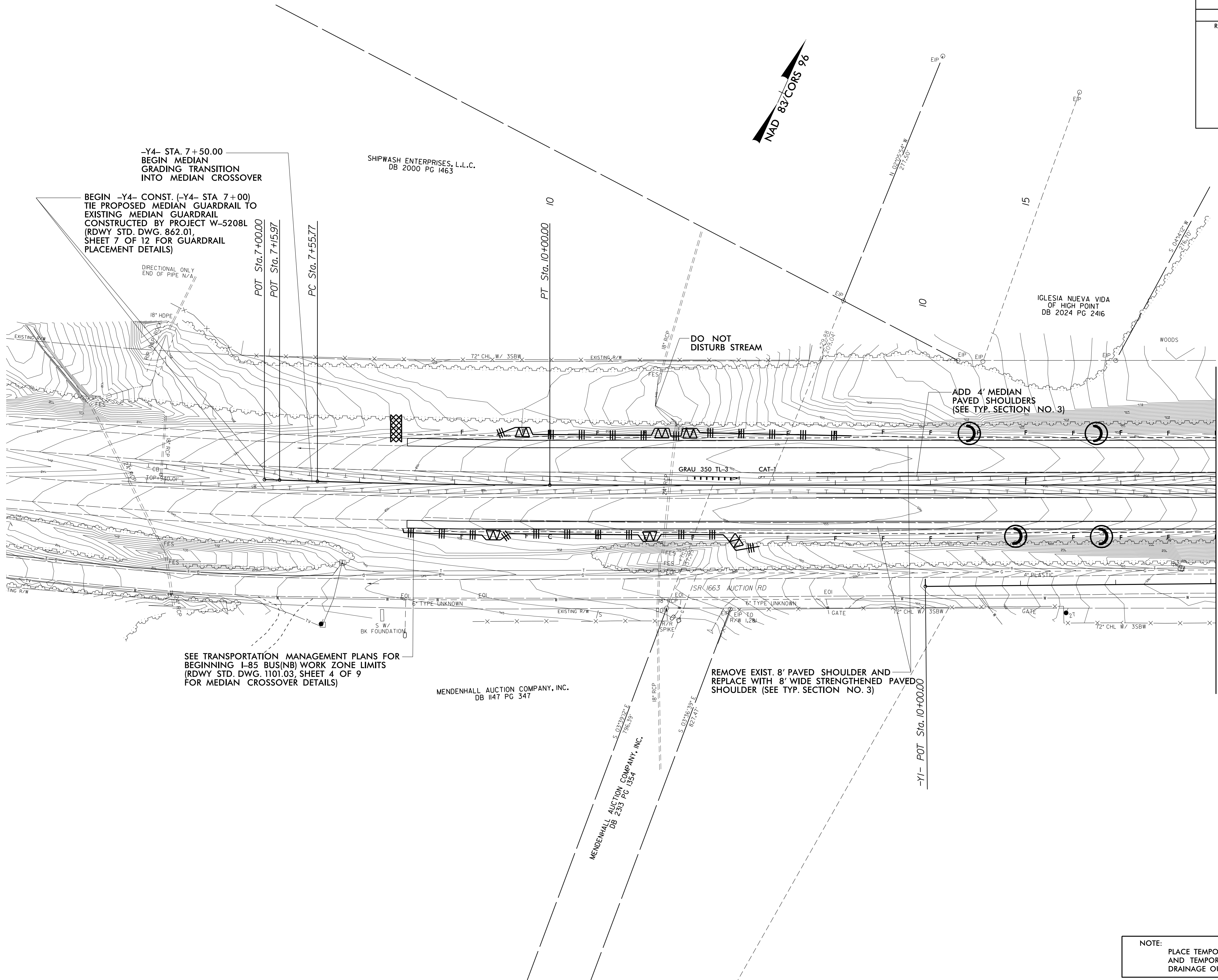


PROJECT REFERENCE NO.	SHEET NO.
B-5114	EC-6/CONST.6
RW SHEET NO.	
ROADWAY DESIGN ENGINEER	HYDRAULICS ENGINEER



-Y4- STA. 7+50.00
 BEGIN MEDIAN
 GRADING TRANSITION
 INTO MEDIAN CROSSOVER

BEGIN -Y4- CONST. (-Y4- STA 7+00)
 TIE PROPOSED MEDIAN GUARDRAIL TO
 EXISTING MEDIAN GUARDRAIL
 CONSTRUCTED BY PROJECT W-5208L
 (RDWY STD. DWG. 862.01,
 SHEET 7 OF 12 FOR GUARDRAIL
 PLACEMENT DETAILS)

SEE TRANSPORTATION MANAGEMENT PLANS FOR
 BEGINNING I-85 BUS(NB) WORK ZONE LIMITS
 (RDWY STD. DWG. 1101.03, SHEET 4 OF 9
 FOR MEDIAN CROSSOVER DETAILS)

REMOVE EXIST. 8' PAVED SHOULDER AND
 REPLACE WITH 8' WIDE STRENGTHENED PAVED
 SHOULDER (SEE TYP. SECTION NO. 3)

ADD 4' MEDIAN
 PAVED SHOULDERS
 (SEE TYP. SECTION NO. 3)

MATCH LINE -Y4- 17+00.00 SEE SHEET 4

CLEARING AND GRUBBING
 EROSION CONTROL FOR
 CONSTRUCTION SHEET 6

NOTE:
 PLACE TEMPORARY ROCK SEDIMENT DAMS TYPE - B
 AND TEMPORARY ROCK SILT CHECKS TYPE - A AT
 DRAINAGE OUTLETS.

8/17/99
 23-FEB-2015 13:53
 R:\Information\Drawings\B-5114-EC.pst6.dgn
 REVISIONS
 1