

CAROLINA THOMAS DEVELOPMENT, LLC
DB 2290 PG 2012

PROJECT REFERENCE NO.	SHEET NO.
B-5114	EC-4/CONST.4
RW SHEET NO.	
ROADWAY DESIGN ENGINEER	HYDRAULICS ENGINEER

CLEARING AND GRUBBING
EROSION CONTROL FOR
CONSTRUCTION SHEET 4

NAD 83/CORS 96

NOTE:
PLACE TEMPORARY ROCK SEDIMENT DAMS TYPE - B
AND TEMPORARY ROCK SILT CHECKS TYPE - A AT
DRAINAGE OUTLETS.

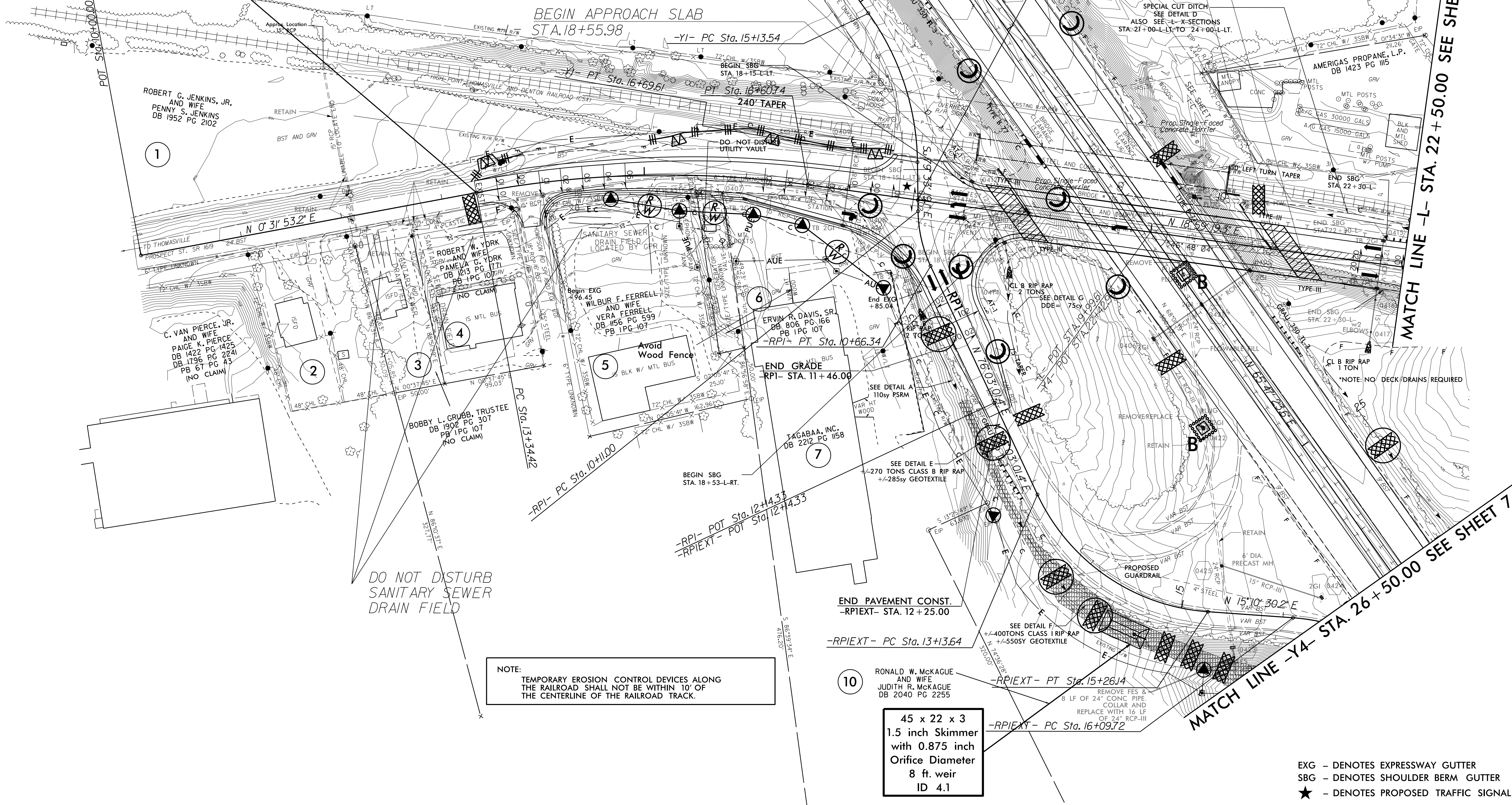
BEGIN TIP PROJECT B-5114
-L- STA. 13+34.42

BEGIN BRIDGE
-L- STA.18+79.61

BEGIN APPROACH SLAB
STA.18+55.98

END BRIDGE
-L- STA.21+26.61

END APPROACH SLAB
-L- STA.21+50.24



NOTE:
TEMPORARY EROSION CONTROL DEVICES ALONG
THE RAILROAD SHALL NOT BE WITHIN 10' OF
THE CENTERLINE OF THE RAILROAD TRACK.

45 x 22 x 3
1.5 inch Skimmer
with 0.875 inch
Orifice Diameter
8 ft. weir
ID 4.1

EXG - DENOTES EXPRESSWAY GUTTER
SBG - DENOTES SHOULDER BERM GUTTER
★ - DENOTES PROPOSED TRAFFIC SIGNAL

MATCH LINE -L- STA. 22 + 50.00 SEE SHEET 5

MATCH LINE -Y4- STA. 26 + 50.00 SEE SHEET 7

MATCH LINE -Y4- 17 + 00.00
SEE SHEET 6