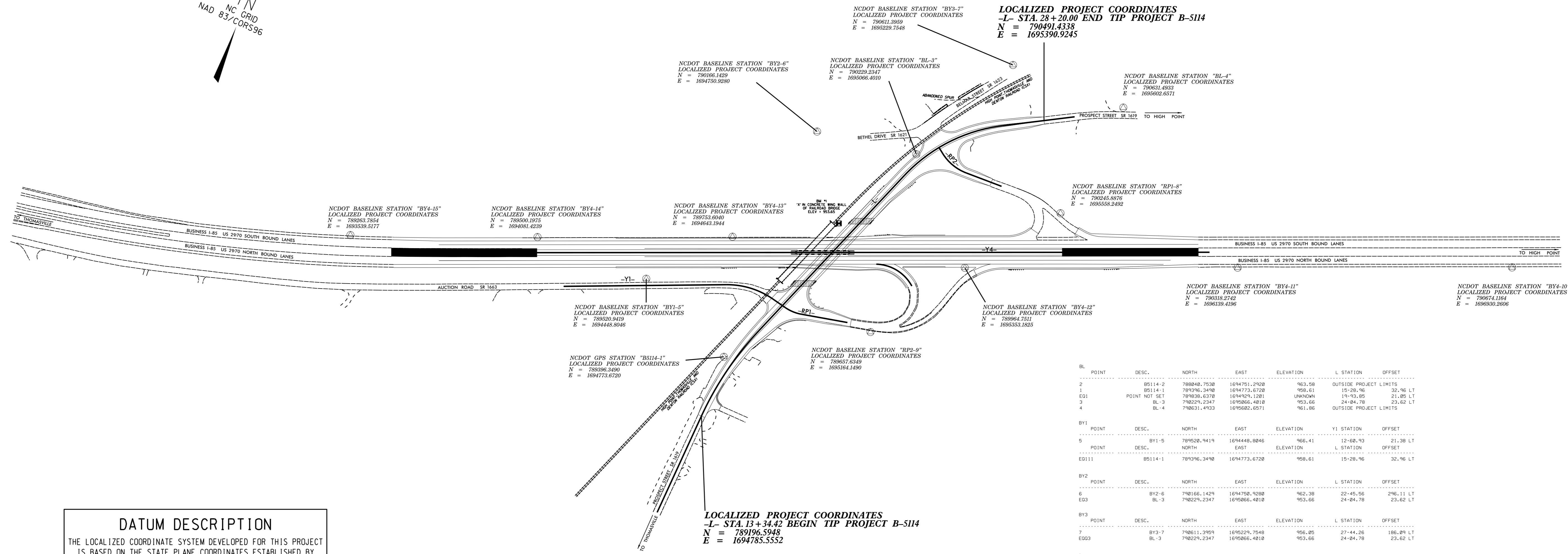
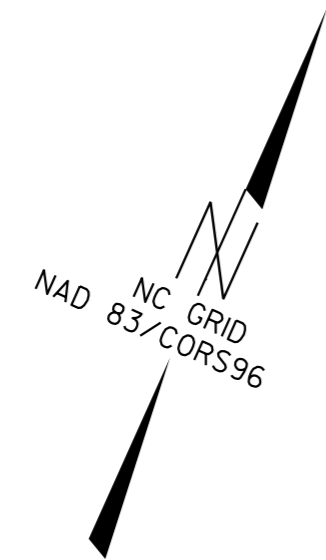


SURVEY CONTROL SHEET B-5114



DATUM DESCRIPTION

THE LOCALIZED COORDINATE SYSTEM DEVELOPED FOR THIS PROJECT IS BASED ON THE STATE PLANE COORDINATES ESTABLISHED BY NGS FOR MONUMENT "B5114-2"

WITH NAD 83/CORS96 STATE PLANE GRID COORDINATES OF
 NORTHING: 788040.753(ft) EASTING: 1694751.292(ft)
 ELEVATION: 963.58(ft)

THE AVERAGE COMBINED GRID FACTOR USED ON THIS PROJECT (GROUND TO GRID) IS: 0.99989792

THE N.C. LAMBERT GRID BEARING AND LOCALIZED HORIZONTAL GROUND DISTANCE FROM "B5114-2" TO -L- STATION 11+50.00 IS
 N 01°55'09.4" E 971.975'

ALL LINEAR DIMENSIONS ARE LOCALIZED HORIZONTAL DISTANCES
 VERTICAL DATUM USED IS NAVD 88

LOCALIZED PROJECT COORDINATES
 -L- STA. 13+34.42 BEGIN TIP PROJECT B-5114
 N = 789196.5948
 E = 1694785.5552

LOCALIZED PROJECT COORDINATES
 -L- STA. 28+20.00 END TIP PROJECT B-5114
 N = 790491.4338
 E = 1695390.9245

BL POINT	DESC.	NORTH	EAST	ELEVATION	L STATION	OFFSET
2	B5114-2	788040.7530	1694751.2920	963.58	OUTSIDE PROJECT LIMITS	
1	B5114-1	789396.3490	1694773.6720	958.61	15+28.96	32.96 LT
ED1	POINT NOT SET	789838.6370	1694926.1281	UNKNOWN	19+93.85	21.85 LT
3	BL-3	798229.2347	1695866.4810	953.66	24+84.78	23.62 LT
4	BL-4	798631.4933	1695682.6571	961.86	OUTSIDE PROJECT LIMITS	
BY1 POINT	DESC.	NORTH	EAST	ELEVATION	Y1 STATION	OFFSET
5	BY1-5	789528.9419	1694448.8046	966.41	12+60.93	21.38 LT
BY2 POINT	DESC.	NORTH	EAST	ELEVATION	L STATION	OFFSET
6	BY2-6	798166.1429	1694758.9280	962.38	22+45.56	296.11 LT
ED3	BL-3	798229.2347	1695866.4810	953.66	24+84.78	23.62 LT
BY3 POINT	DESC.	NORTH	EAST	ELEVATION	L STATION	OFFSET
7	BY3-7	798611.3959	1695229.7548	956.85	27+44.26	186.89 LT
ED03	BL-3	798229.2347	1695866.4810	953.66	24+84.78	23.62 LT
BY4 POINT	DESC.	NORTH	EAST	ELEVATION	Y4 STATION	OFFSET
15	BY4-15	789263.7854	1693829.5177	944.73	OUTSIDE PROJECT LIMITS	
14	BY4-14	789588.1975	1694881.4239	954.67	13+11.77	49.16 LT
13	BY4-13	789753.6848	1694643.1944	948.85	19+28.85	49.91 LT
ED11	POINT NOT SET	789838.6370	1694926.1281	UNKNOWN	22+25.78	18.21 LT
12	BY4-12	789984.7511	1695353.1825	932.31	26+62.18	48.67 RT
11	BY4-11	790318.2742	1696139.4196	927.52	OUTSIDE PROJECT LIMITS	
10	BY4-10	790744.1164	1696938.2686	928.29	OUTSIDE PROJECT LIMITS	
BRP1 POINT	DESC.	NORTH	EAST	ELEVATION	L STATION	OFFSET
ED003	BL-3	798229.2347	1695866.4810	953.66	24+84.78	23.62 LT
BRP2 POINT	DESC.	NORTH	EAST	ELEVATION	Y4 STATION	OFFSET
8	RP1-8	798245.8876	1695958.2492	934.89	29+64.51	123.64 LT
BRP2 POINT	DESC.	NORTH	EAST	ELEVATION	Y4 STATION	OFFSET
ED12	BY4-12	789984.7511	1695353.1825	932.31	26+62.18	48.67 RT
BRP2 POINT	DESC.	NORTH	EAST	ELEVATION	L STATION	OFFSET
9	RP2-9	789657.6349	1695164.1498	945.10	18+96.17	288.89 RT

NOTES:

- THE CONTROL DATA FOR THIS PROJECT CAN BE FOUND ELECTRONICALLY BY SELECTING PROJECT CONTROL DATA AT:
[HTTPS://CONNECT.NCDOT.GOV/RESOURCES/LOCATION](https://connect.ncdot.gov/resources/location)
 THE FILES TO BE FOUND ARE AS FOLLOWS:
 B5114_LS_CONTROL.TXT
 SITE CALIBRATION INFORMATION HAS NOT BEEN PROVIDED FOR THIS PROJECT. IF FURTHER INFORMATION IS NEEDED, PLEASE CONTACT THE LOCATION AND SURVEYS UNIT.
- INDICATES GEODETIC CONTROL MONUMENTS USED OR SET FOR HORIZONTAL PROJECT CONTROL BY THE NCDOT LOCATION AND SURVEYS UNIT.
 PROJECT CONTROL ESTABLISHED USING GLOBAL POSITIONING SYSTEM.
 NETWORK ESTABLISHED FROM NGS ONLINE POSITIONING SERVICE (OPUS)

⊕ NCDOT GPS STATION "B5114-1"
 LOCALIZED PROJECT COORDINATES
 N = 789263.7854
 E = 1694751.2920

NOTE: DRAWING NOT TO SCALE

6/2/09

05_APR-2015 10:07 05114_1s_1c.dgn
 11:53:03 USER:JLW