

**This electronic collection of documents is provided  
for the convenience of the user  
and is Not a Certified Document –**

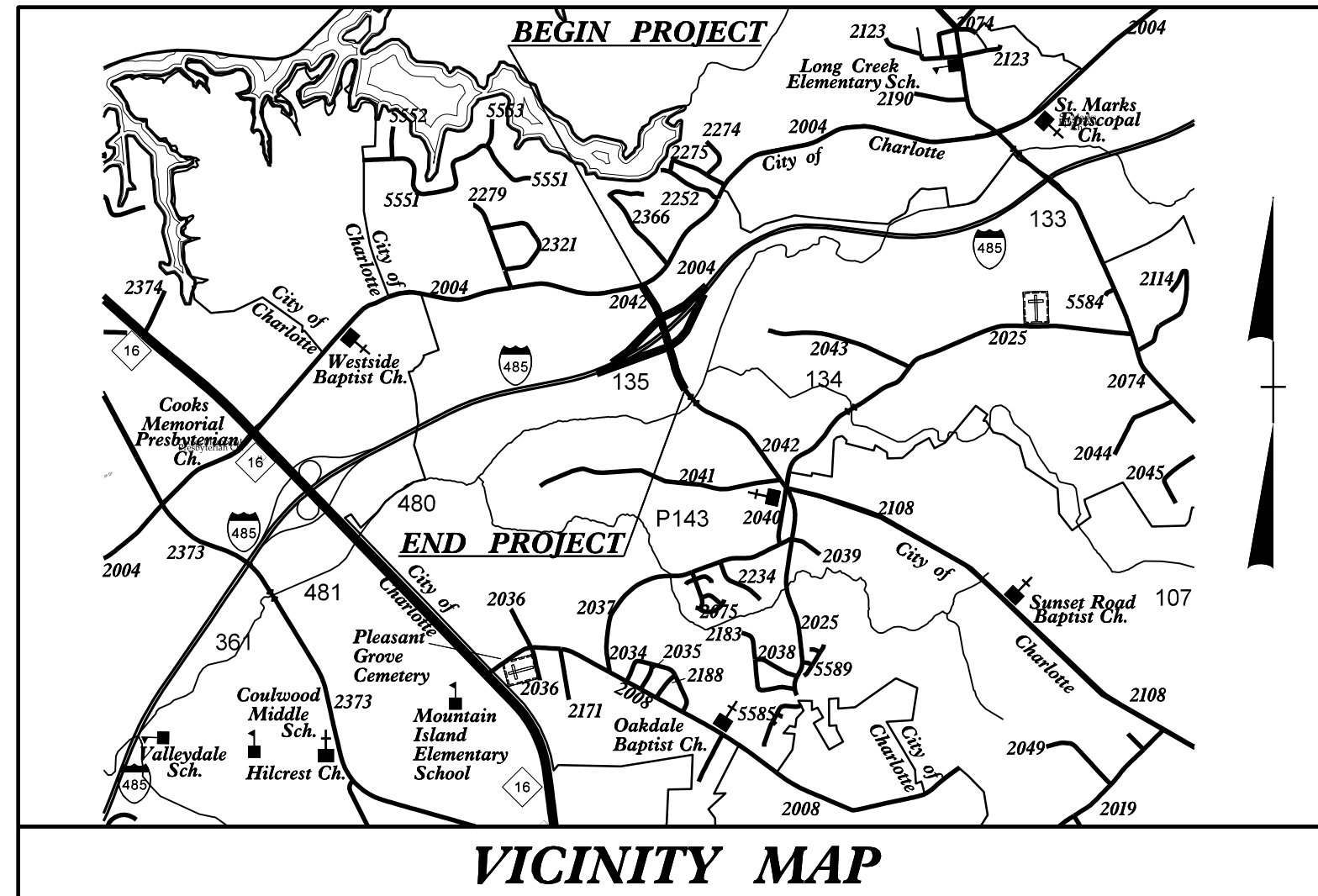
**The documents contained herein were originally issued  
and sealed by the individuals whose names and license  
numbers appear on each page, on the dates appearing  
with their signature on that page.**

**This file or an individual page  
shall not be considered a certified document.**

**TIP PROJECT: R-2248G**

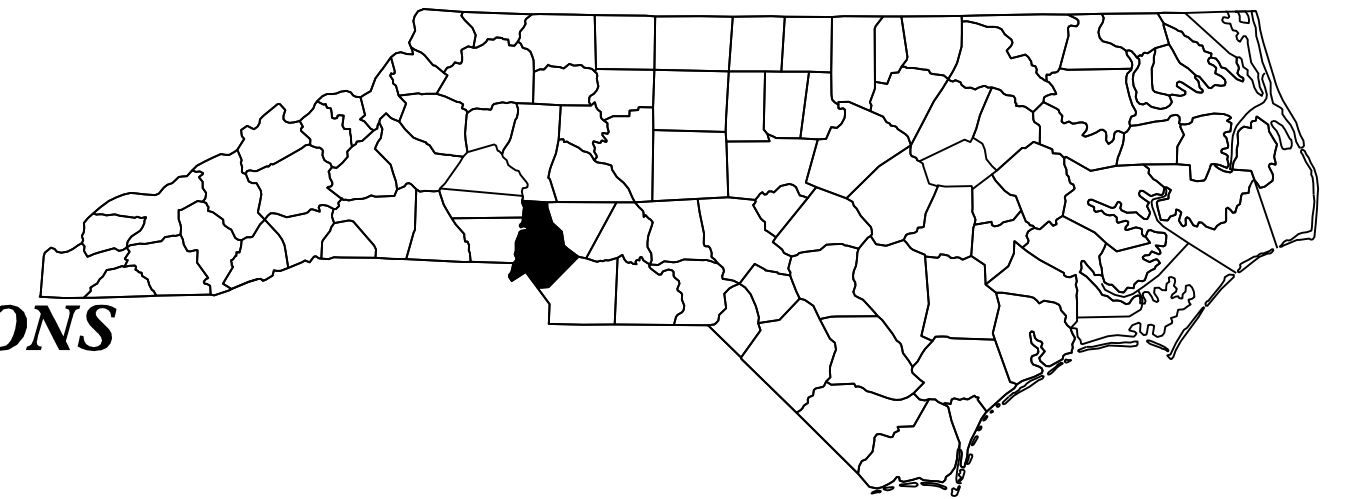
STATE OF NORTH CAROLINA  
DIVISION OF HIGHWAYS

T.I.P. NO.	SHEET NO.
R-2248G	UO-1

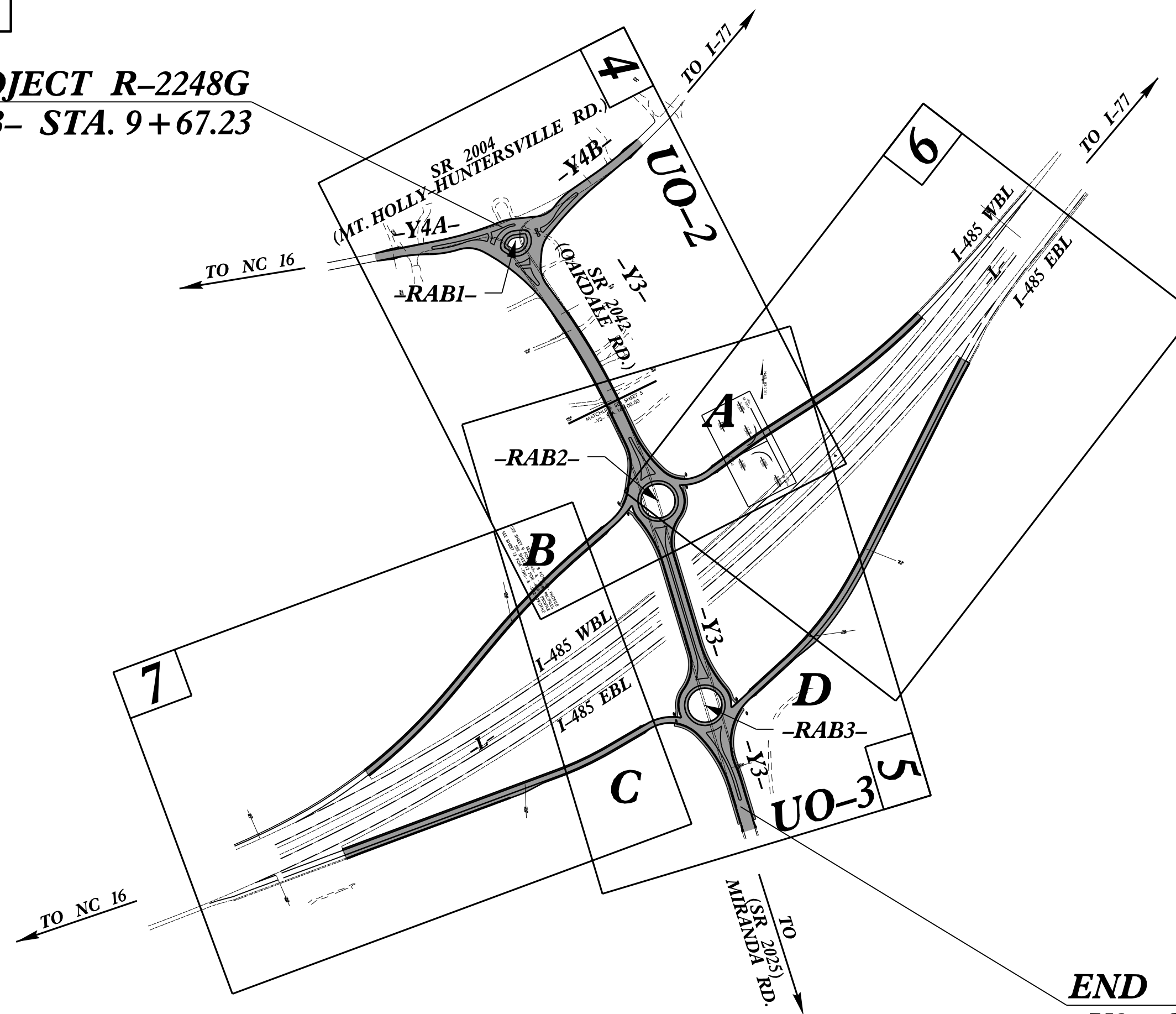


**UTILITIES BY OTHERS PLANS  
MECKLENBURG COUNTY**

**LOCATION: I-485 CHARLOTTE OUTER LOOP INTERCHANGE WITH  
SR 2042 (OAKDALE ROAD)**  
**TYPE OF WORK: POWER AND COMMUNICATION LINE RELOCATIONS**



**BEGIN TIP PROJECT R-2248G  
-Y3- STA. 9+67.23**

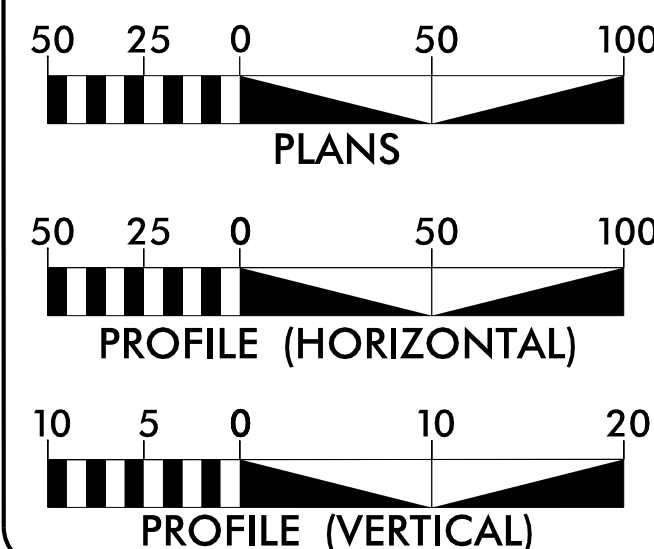


**END TIP PROJECT R-2248G  
-Y3- STA. 29+00.00**

NAD 83/NA 2011

CLEARING ON THIS PROJECT SHALL BE PERFORMED TO THE LIMITS ESTABLISHED BY METHOD \_\_\_\_.  
THIS PROJECT IS NOT WITHIN ANY MUNICIPAL BOUNDARIES.

**GRAPHIC SCALES**



**INDEX OF SHEETS**

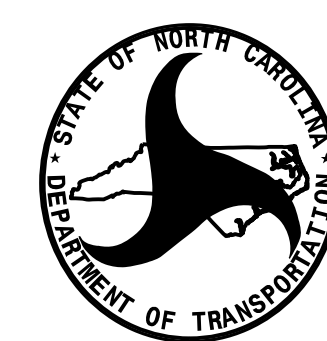
SHEET NO.	DESCRIPTION
UO-1	TITLE SHEET
UO-2 THRU UO-3	UBO PLAN SHEETS

**PRIVATE UTILITY OWNERS ON PROJECT**

- POWER\COM - DUKE ENERGY PROGRESS DUKENET
- TELEPHONE - AT&T
- CABLE TV - TIME WARNER CABLE
- GAS - PEIDMONT NATURAL GAS



**HINDE ENGINEERING**  
License No. C-2639  
7520 E. Independence Blvd., Suite 230 Charlotte, NC 28227



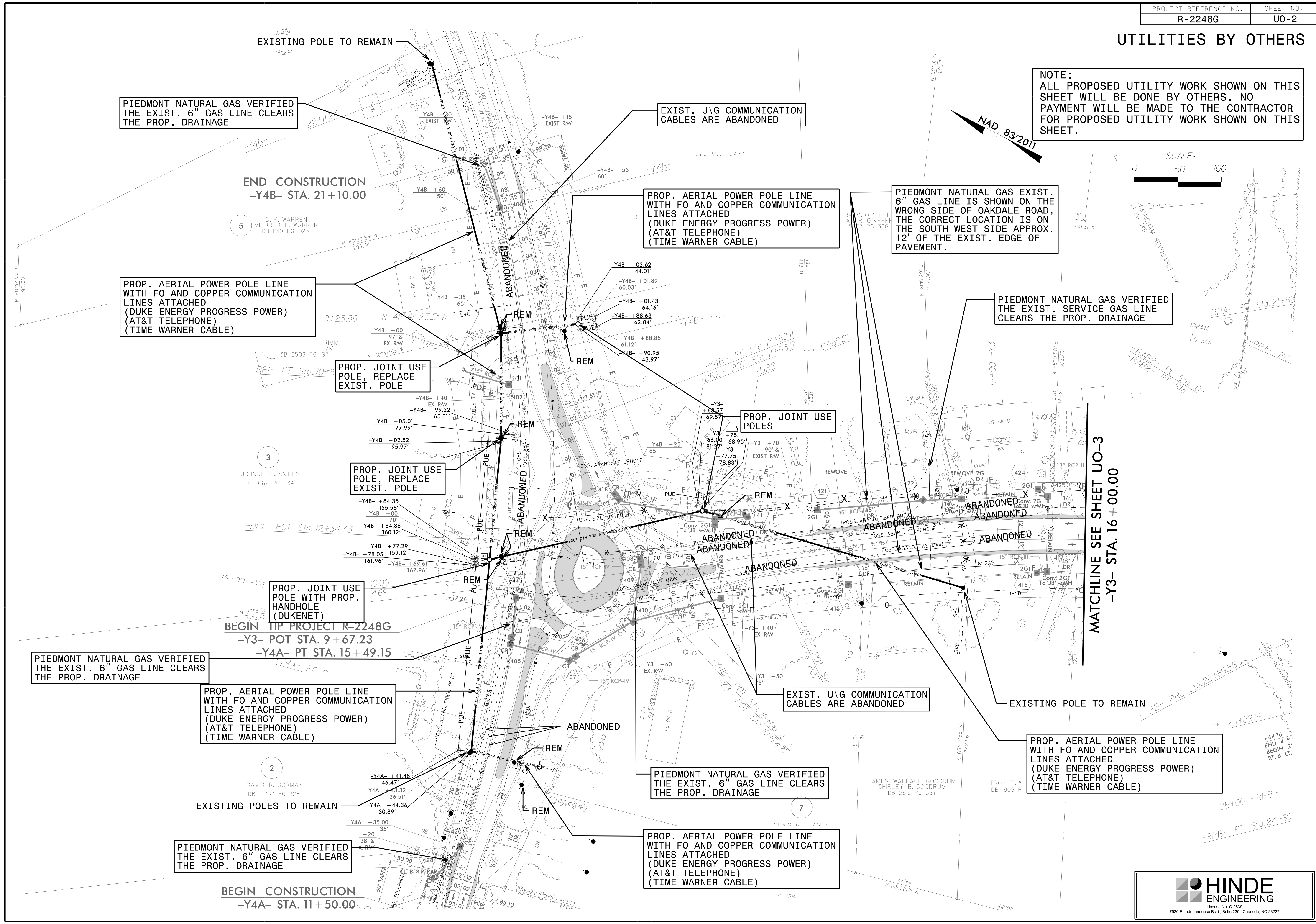
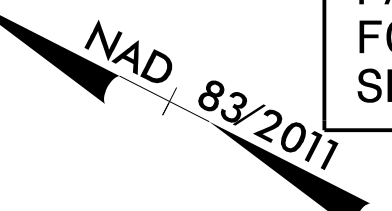
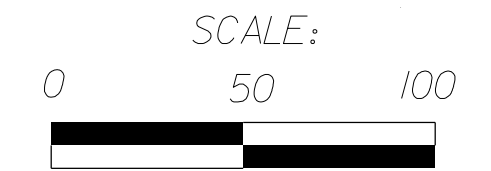
PREPARED IN THE OFFICE OF:  
**DIVISION OF HIGHWAYS  
UTILITIES UNIT  
UTILITIES ENGINEERING**

1555 MAIL SERVICES CENTER  
RALEIGH NC 27699-1555  
PHONE (919) 707-6690  
FAX (919) 250-4151

- Roger Worthington, P.E. UTILITIES SECTION ENGINEER
- Carl Barclay, P.E. UTILITIES SQUAD LEADER PROJECT ENGINEER
- Bo Hemphill, P.E. UTILITIES PROJECT DESIGN ENGINEER
- Corey Bousquet, P.E. HINDE ENGINEERING PROJECT MANAGER

# UTILITIES BY OTHERS

**NOTE:**  
ALL PROPOSED UTILITY WORK SHOWN ON THIS SHEET WILL BE DONE BY OTHERS. NO PAYMENT WILL BE MADE TO THE CONTRACTOR FOR PROPOSED UTILITY WORK SHOWN ON THIS SHEET.



PIEDMONT NATURAL GAS VERIFIED THE EXIST. 6" GAS LINE CLEARS THE PROP. DRAINAGE

EXIST. U\G COMMUNICATION CABLES ARE ABANDONED

PROP. AERIAL POWER POLE LINE WITH FO AND COPPER COMMUNICATION LINES ATTACHED (DUKE ENERGY PROGRESS POWER) (AT&T TELEPHONE) (TIME WARNER CABLE)

PIEDMONT NATURAL GAS EXIST. 6" GAS LINE IS SHOWN ON THE WRONG SIDE OF OAKDALE ROAD, THE CORRECT LOCATION IS ON THE SOUTH WEST SIDE APPROX. 12' OF THE EXIST. EDGE OF PAVEMENT.

PROP. AERIAL POWER POLE LINE WITH FO AND COPPER COMMUNICATION LINES ATTACHED (DUKE ENERGY PROGRESS POWER) (AT&T TELEPHONE) (TIME WARNER CABLE)

PIEDMONT NATURAL GAS VERIFIED THE EXIST. SERVICE GAS LINE CLEARS THE PROP. DRAINAGE

PROP. JOINT USE POLE, REPLACE EXIST. POLE

PROP. JOINT USE POLES

PROP. JOINT USE POLE, REPLACE EXIST. POLE

PROP. JOINT USE POLE WITH PROP. HANDHOLE (DUKENET)

PIEDMONT NATURAL GAS VERIFIED THE EXIST. 6" GAS LINE CLEARS THE PROP. DRAINAGE

PROP. AERIAL POWER POLE LINE WITH FO AND COPPER COMMUNICATION LINES ATTACHED (DUKE ENERGY PROGRESS POWER) (AT&T TELEPHONE) (TIME WARNER CABLE)

EXIST. U\G COMMUNICATION CABLES ARE ABANDONED

PROP. AERIAL POWER POLE LINE WITH FO AND COPPER COMMUNICATION LINES ATTACHED (DUKE ENERGY PROGRESS POWER) (AT&T TELEPHONE) (TIME WARNER CABLE)

PIEDMONT NATURAL GAS VERIFIED THE EXIST. 6" GAS LINE CLEARS THE PROP. DRAINAGE

PIEDMONT NATURAL GAS VERIFIED THE EXIST. 6" GAS LINE CLEARS THE PROP. DRAINAGE

PROP. AERIAL POWER POLE LINE WITH FO AND COPPER COMMUNICATION LINES ATTACHED (DUKE ENERGY PROGRESS POWER) (AT&T TELEPHONE) (TIME WARNER CABLE)

MATCHLINE SEE SHEET UO-3  
-Y3- STA. 16 + 00.00

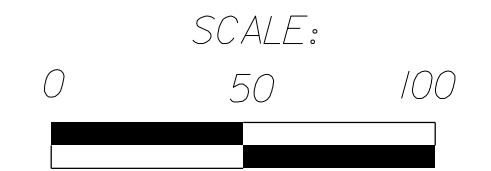
BEGIN CONSTRUCTION  
-Y4A- STA. 11 + 50.00

BEGIN TIP PROJECT R-2248G  
-Y3- POT STA. 9 + 67.23 =  
-Y4A- PT STA. 15 + 49.15

END CONSTRUCTION  
-Y4B- STA. 21 + 10.00

# UTILITIES BY OTHERS

**NOTE:**  
 ALL PROPOSED UTILITY WORK SHOWN ON THIS SHEET WILL BE DONE BY OTHERS. NO PAYMENT WILL BE MADE TO THE CONTRACTOR FOR PROPOSED UTILITY WORK SHOWN ON THIS SHEET.



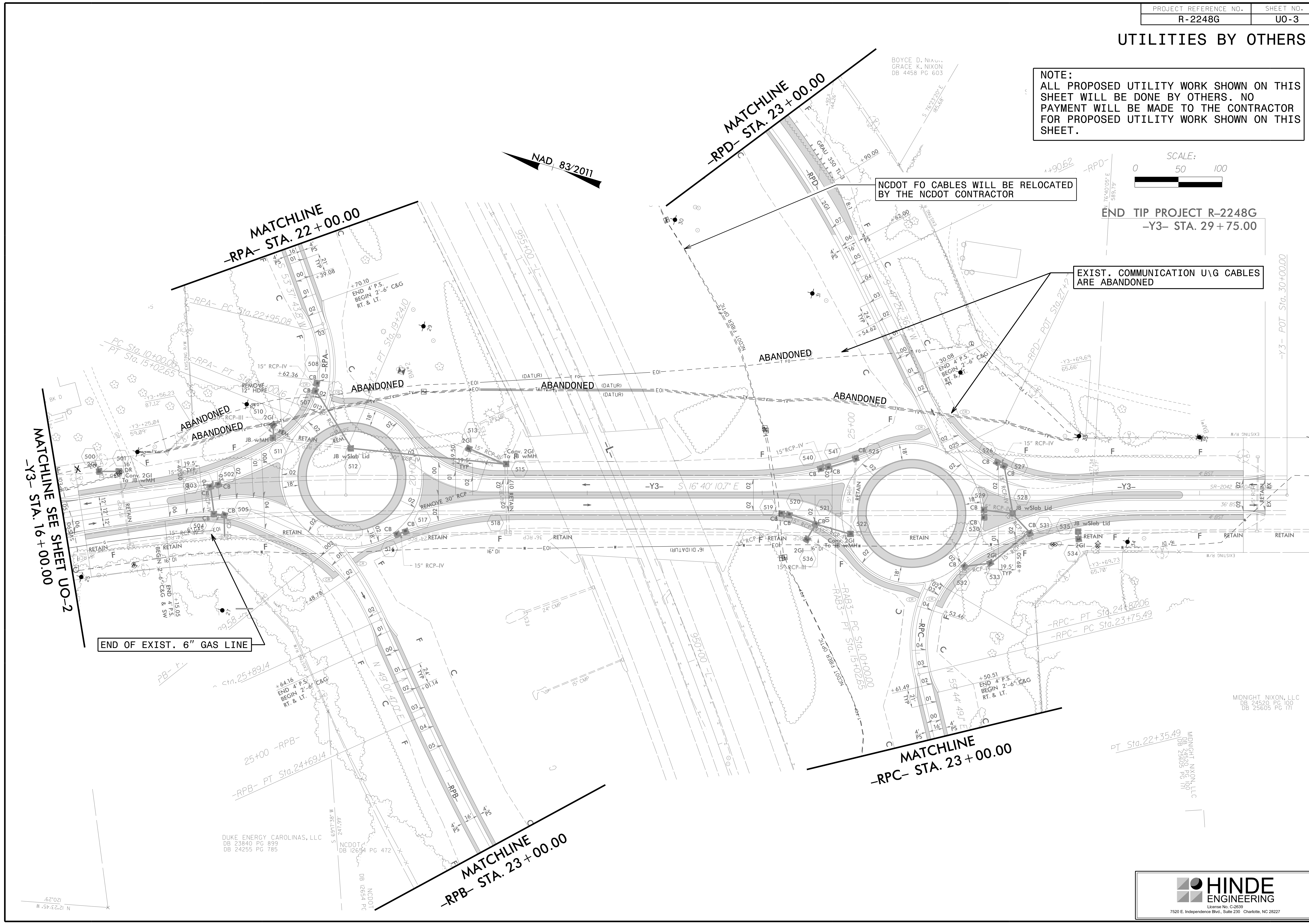
END TIP PROJECT R-2248G  
 -Y3- STA. 29+75.00

EXIST. COMMUNICATION U/G CABLES ARE ABANDONED

NCDOT FO CABLES WILL BE RELOCATED BY THE NCDOT CONTRACTOR

MATCHLINE SEE SHEET UO-2  
 -Y3- STA. 16+00.00

END OF EXIST. 6" GAS LINE



DUKE ENERGY CAROLINAS, LLC  
 DB 23840 PG 899  
 DB 24255 PG 785

NCDOT  
 DB 12654 PG 472

NCDOT  
 DB 12654 PG

BOYCE D. NIXON, LLC  
 GRACE K. NIXON  
 DB 4458 PG 603

MIDNIGHT NIXON, LLC  
 DB 24520 PG 100  
 DB 25605 PG 171

MIDNIGHT NIXON, LLC  
 DB 25605 PG 171