
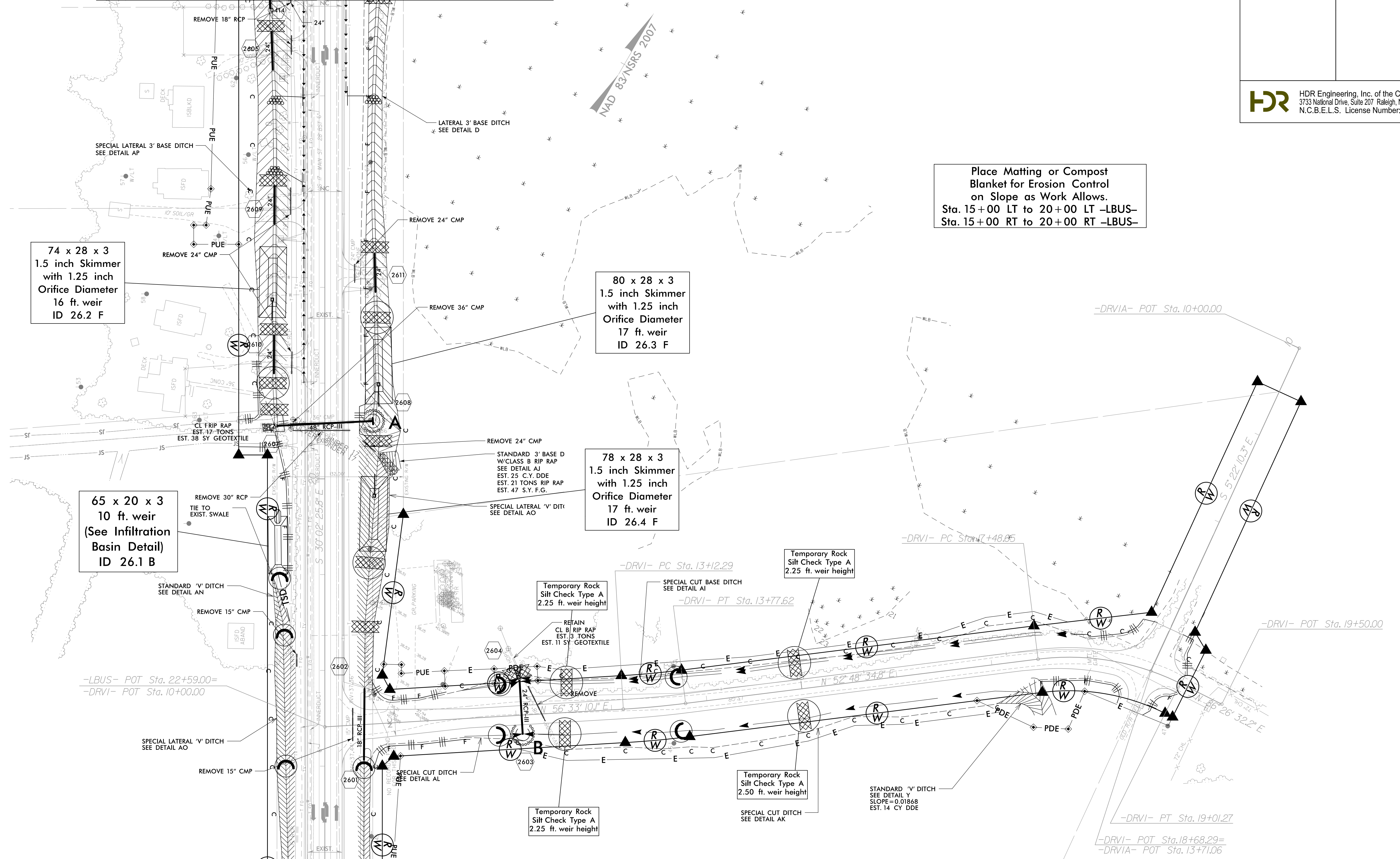


PROJECT REFERENCE NO.	SHEET NO.
R-2514C	EC-51/CONST.26
RW SHEET NO.	
ROADWAY DESIGN ENGINEER	HYDRAULICS ENGINEER
 HDR Engineering, Inc. of the Carolinas 3733 National Drive, Suite 207 Raleigh, N.C. 27612 N.C.B.E.L.S. License Number: F-0116	

MATCHLINE -LBUS- STA. 15+00.00 SEE SHEET 4



Place Matting or Compost Blanket for Erosion Control on Slope as Work Allows.
Sta. 15+00 LT to 20+00 LT -LBUS-
Sta. 15+00 RT to 20+00 RT -LBUS-

74 x 28 x 3
1.5 inch Skimmer
with 1.25 inch
Orifice Diameter
16 ft. weir
ID 26.2 F

80 x 28 x 3
1.5 inch Skimmer
with 1.25 inch
Orifice Diameter
17 ft. weir
ID 26.3 F

78 x 28 x 3
1.5 inch Skimmer
with 1.25 inch
Orifice Diameter
17 ft. weir
ID 26.4 F

65 x 20 x 3
10 ft. weir
(See Infiltration
Basin Detail)
ID 26.1 B

Temporary Rock
Silt Check Type A
2.25 ft. weir height

Temporary Rock
Silt Check Type A
2.25 ft. weir height

Temporary Rock
Silt Check Type A
2.25 ft. weir height

Temporary Rock
Silt Check Type A
2.50 ft. weir height

STANDARD 'V' DITCH
SEE DETAIL Y
SLOPE=0.01868
EST. 14 CY DDE

MATCHLINE -LBUS- STA. 24+00.00 SEE SHEET 27

REVISIONS
 R/W REVISION 7-28-14 (DMG) - ADDED ADDITIONAL R/W ON PARCEL 4 (THE UNITED STATES OF AMERICA) ALONG -DRV1A- STA. 10+50.00 TO STA. 13+27.42 LT.
 REVISED THE R/W AND TCE ON PARCEL 147 (MAYSVILLE DEVELOPMENT CORPORATION) AND PARCEL 147A (SAFE HARBOR FARM, INC.).

2/2/2015
 10:43:35 AM
 14C_Hyd_EC_FINAL_PSH.dgn