


PROJECT REFERENCE NO.	SHEET NO.
R-2514C	EC-44/CONST.19
R/W SHEET NO.	
ROADWAY DESIGN ENGINEER	HYDRAULICS ENGINEER
 HDR Engineering, Inc. of the Carolinas 3733 National Drive, Suite 207 Raleigh, N.C. 27612 N.C.B.E.L.S. License Number: F-0116	

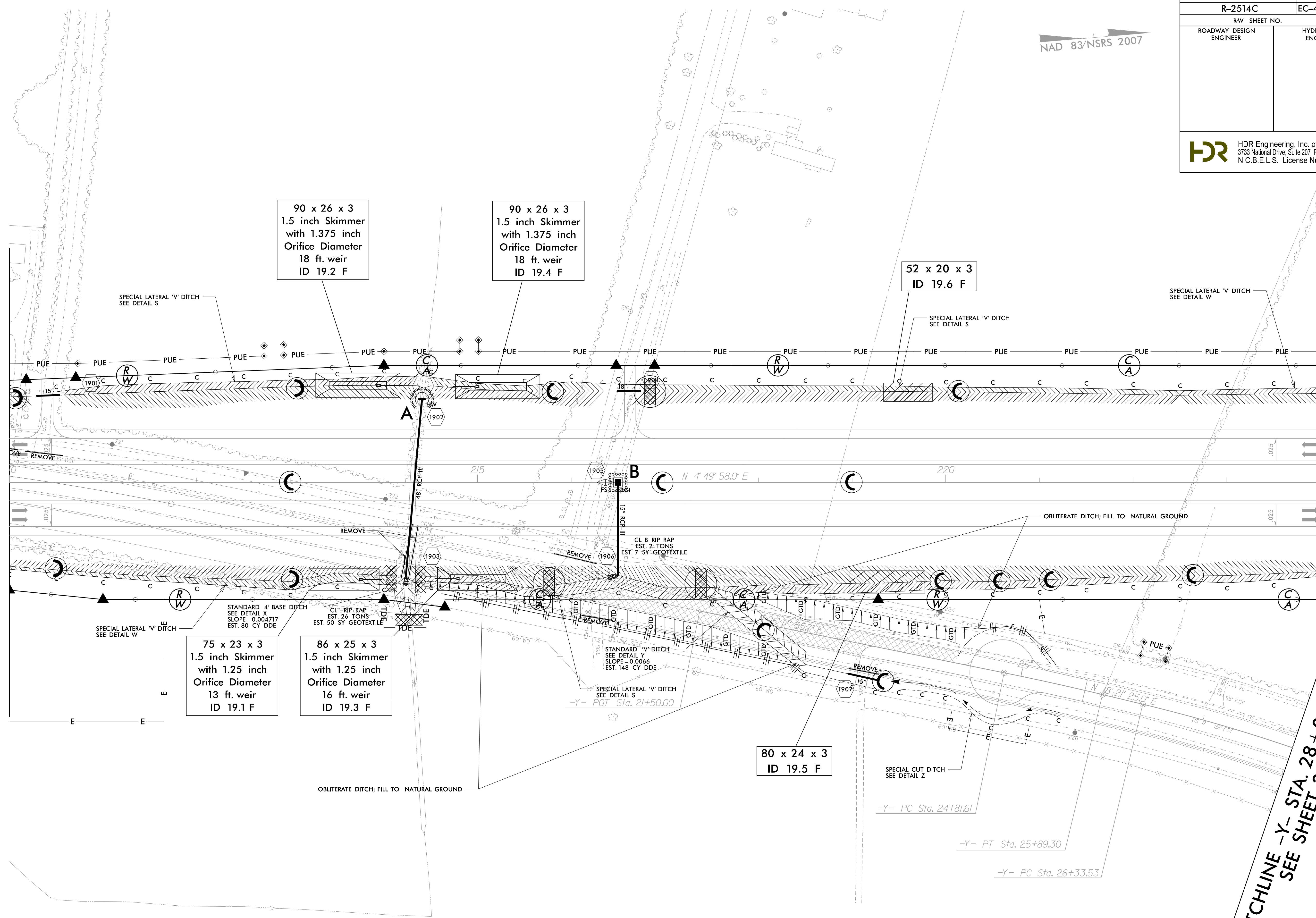
NAD 83/NSRS 2007

REVISIONS  
 R/W REVISION 6-25-14 (DWG) - REVISED THE PUE ON PARCEL 25 (MELVIN L. AYCOCK, JR., ET. UX), PARCEL 26 (MEYERHAUSER), AND PARCEL 29 (DELGEN L. MITCHELL, ET. UX) AT -L- STA. 224+84.00 LT. ADDED ADDITIONAL PUE ON PARCEL 29 (DELGEN L. MITCHELL, ET. UX) AT -Y- STA. 26+33.00 LT. AND -L- STA. 225+21.00 RT.

MATCHLINE -L- STA. 210 + 00.00 SEE SHEET 18

MATCHLINE -L- STA. 224 + 00.00 SEE SHEET 20

MATCHLINE -Y- STA. 28 + 00.00  
 SEE SHEET 20



NOTE: ALL DRIVES ARE 12' UNLESS NOTED OTHERWISE.  
 PAVE ALL DRIVES TO BACK OF TURNOUT RADIUS.  
 SEE SHEET 2-D FOR DRIVEWAY PROFILE DETAILS.

SEE SHEET 36 FOR -L- PROFILE  
 SEE SHEET 42 FOR -Y- PROFILE

2/2/2015 10:24:52 AM  
 I:\2514C-Hyd-EC-FINAL\_PSH.dgn

8/17/99